

# FUNDING REUSE PROJECTS THROUGH WIFA

Arizona's largest financing source for water reuse



WIFA

## Finance your reuse project with WIFA

The Water Infrastructure Finance Authority of Arizona (WIFA) has provided more than **\$2 billion** to protect water quality in Arizona, through the Clean Water and Drinking Water State Revolving Funds.

Traditionally, much of the funding provided by WIFA has been used to build wastewater collection and treatment facilities. WIFA is spearheading an initiative to use more of these funds to conserve Arizona's water supply by **recycling and reusing wastewater**.

As long-term drought continues in Arizona, protecting and increasing water supply reliability is even more important. WIFA offers solutions through low-cost financial assistance for these vital reuse projects. WIFA can help alleviate the financial hurdles facing your community.

**Who is eligible for WIFA funding?** Cities, towns, tribal entities, and special districts. WIFA encourages private industry, nonprofits and other groups to form partnerships with eligible entities.

**What types of reuse projects are eligible?** Planning, design and construction projects that recycle or reuse wastewater.

**What makes WIFA a good funding option?** Low-interest loans that allow borrowers to complete a large project and spread project costs over a repayment period of up to 20 years. No application fees or closing costs. Additional incentives, such as a lower interest rate or forgivable principal, may apply.

### WIFA can fund any amount requested

2016 Avg. Interest Rate

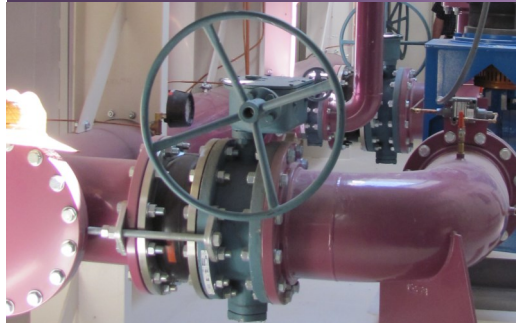
(for public entities): **2.04%**

Standard

Loan Term: **20 years**

**Partner with a financing agency whose mission aligns with yours - protecting water quality and public health.**

<b>Recycle</b>	water
<b>Reuse</b>	reclaimed water
<b>Treat</b>	wastewater
<b>Restore</b>	riparian habitats
<b>Recharge</b>	groundwater aquifers
<b>Conserve</b>	water resources
<b>Increase</b>	supply
<b>Irrigate</b>	sports fields, golf courses, etc.



### Project Examples:

- Reuse and recycle
- Recharge wells
- Treatment plant upgrades to produce reclaimed water
- Distribution pipes
- Constructed wetlands for wastewater treatment, polishing and/or effluent disposal



Water Infrastructure Finance Authority | 100 N. 15th Avenue, Suite 103 | Phoenix, Arizona 85007

Phone (602) 364-1310 | Toll free (877) 298-0425 | Fax (602) 364-1327 | [www.azwifa.gov](http://www.azwifa.gov)