

2A

START
From Public Health
Risk Reduction
Assumptions

Technology
Assumptions

Are the treatment
technologies identified by
EPA able to reduce the
contaminant to the MCL?

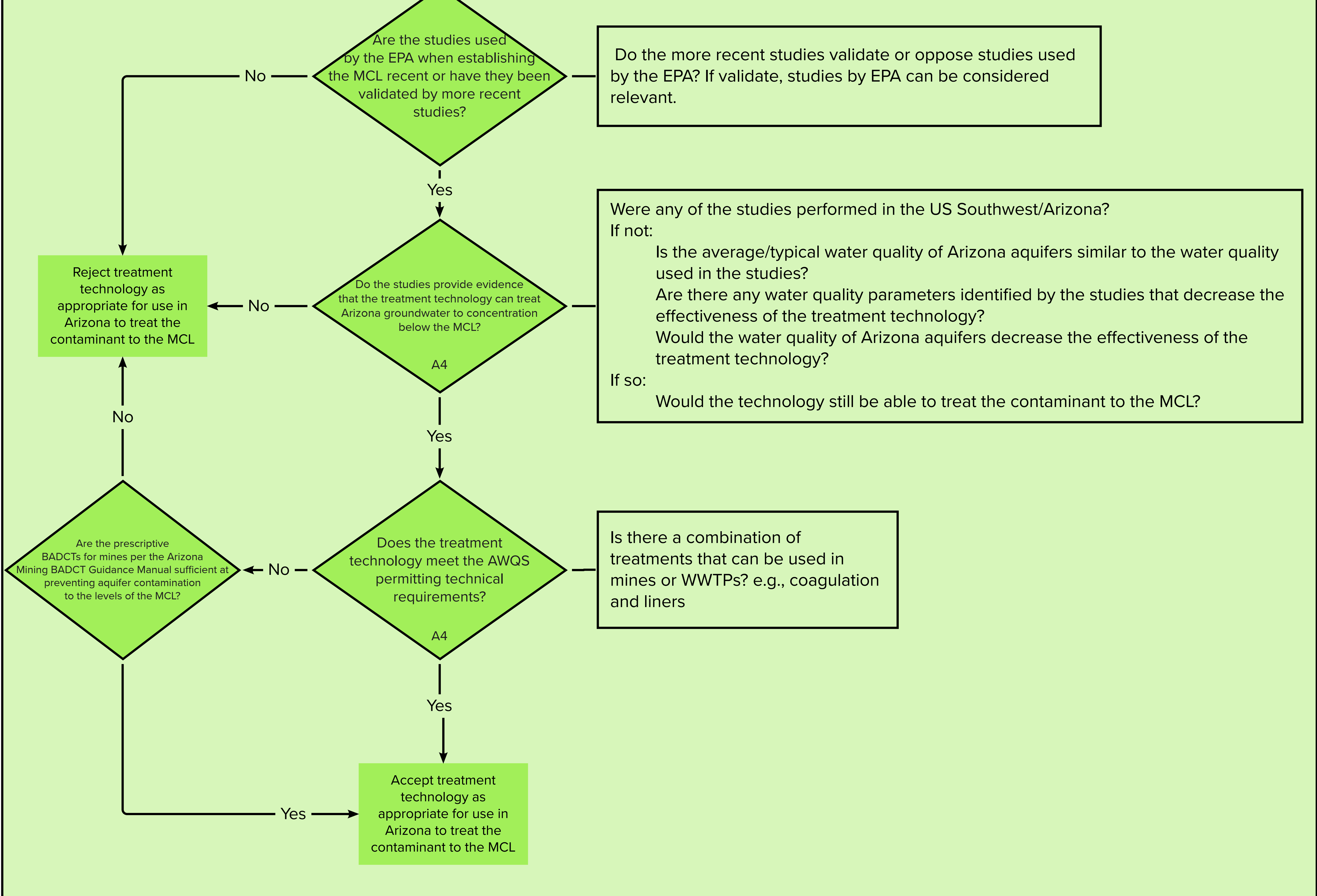
Compile and review studies used
by the EPA to determine
acceptable treatment
technologies. Include
technologies at experimental
stages that may not have been
demonstrated at full scale

Any additional studies
researched and/or reviewed for
the purpose of this evaluation
should, to the best possible, be
focused on the United States,
southwest and/or Arizona. ^{A4}

For each individual
treatment
technology identified
by the EPA

Appropriateness Determination Wing: Technology Assumptions

Iterative process for each treatment technology



Identify private or public entities that are developing technologies to treat the contaminant to levels below the MCL that would be viable for use on groundwater in Arizona.

Are any treatment technologies identified by the EPA acceptable for use in Arizona

Compile a list of technologies that are appropriate for use in Arizona to treat the contaminant to the MCL

END
Move on to Cost Assumptions

Assumptions about technology used by the administration in developing MCLs are appropriate for establishing drinking water AWQS.