



Ensuring Safe Drinking Water: ADEQ's Statewide PFAS Sampling Project

Phase 1 (November 2022 - October 2024)
Closeout Report



Clean Air, Safe Water,
Healthy Land for Everyone

Publication Number EQR-24-21





Table of Contents

Executive Summary	3
Acknowledgements	4
Overview	5
Scope of ADEQ’s PFAS Sampling Initiative	6
Sampling Strategy and Process	6
Results	8
Project Engagement and Involvement	8
Categorization of PWS by Sampling Results	8
Summary of Above MCL Findings	10
Summary of Below MCL Findings	10
Summary of Not Detected Findings	10
Summary of Findings for MCL Related PFAS Compounds	10
Findings & Recommendations	11
Key Takeaways	11
Guidance on Drinking Water from PWS in Relation to PFAS	11
Future Steps for ADEQ and What’s Next	13
Appendices	14
A. Acronym List	14
B. PWS Project Participation List	15
C. Table of Project Participation Type by County	30
D. Stacked Bar Chart of Project Participation	31
E. Table of PFAS Detection Type by County	31
F. Stacked Bar Chart of Percent Distribution of PFAS Detection Type by County	32
G. Table of PFAS Detection Type by County of Systems Sampled	32
H. Table of Number of PWS by Type in PFAS Sampling Projects	33
I. Bar Chart of Number of PWS by Type in PFAS Sampling Projects	34
J. Table of Percentage of Detection Type Groups of Total PWS Analyzed by County	34
K. Stacked Percent Bar Chart of Detection Type Groups of Total PWS Analyzed by County	35
L. Table of PFAS Above MCL Detections by EPA Method	35



Executive Summary

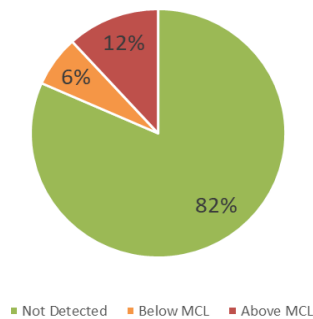
The Arizona Department of Environmental Quality (ADEQ) initiated a proactive statewide per- and polyfluoroalkyl substances (PFAS) sampling project in November 2022. This project aimed to help Arizona's public water systems (PWS) prepare for and comply with the anticipated U.S. Environmental Protection Agency (EPA) National Primary Drinking Water Regulation (NPDWR) for PFAS, and was especially important for smaller systems not included in EPA's Unregulated Contaminant Monitoring Rule 5 (UCMR5). Finalized on April 26, 2024, EPA's PFAS NPDWR established Maximum Contaminant Levels (MCLs) for six PFAS compounds, which regulated PWS must comply with by April 26, 2029.

ADEQ, based on project scope, identified 752 PWS to be sampled and tested. Of these, 693 systems (92 percent) participated. ADEQ collected more than 8,000 samples over 663 days. ADEQ tested for PFAS using EPA Methods 533 and 537.1 (version 2). Results were categorized into three groups: Not Detected, Below MCL, and Above MCL.

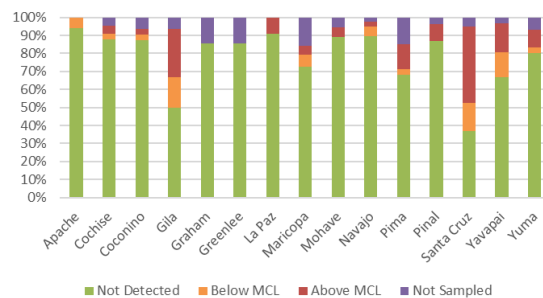
Collected data show that 88 percent of systems are serving water in compliance with the PFAS MCLs. 12 percent of systems detected levels above at least one PFAS MCL. Santa Cruz County reported the highest number of systems with PFAS above MCLs at 44 percent, followed by Gila County with 29 percent.

Perfluorooctanoic acid (PFOA) and perfluorooctanesulfonic acid (PFOS) were the most frequently detected PFAS compounds above the MCLs. GenX compounds were not detected in any sample, and no detections above the MCL for perfluorononanoic acid (PFNA) were found in any PWS.

PFAS Detection Type Distribution of PWSs Analyzed



Percent Distribution of PFAS Detection Type by County



The project has provided critical data for future PFAS mitigation efforts. ADEQ is using this information, along with state and federal funding, to expand sampling. The increased sampling will target high-risk, small, and/or disadvantaged systems.

Looking ahead, ADEQ will support PWS with technical guidance, education, and federal and state-funded mitigation initiatives. The ADEQ website has a [PFAS Interactive Map](#) which gives the public easy access to test results and educational content. ADEQ is committed to ensuring Arizona's water systems comply with new regulations and protecting public health.



Acknowledgements

This report was made possible through funding provided by EPA. We thank the PWS for their active participation and collaborative efforts throughout the project.

Special thanks go to our contractors, Tetra Tech, Rural Community Assistance Corporation, and Legend Analytical Laboratory, for their support in sample collection and analysis. We also acknowledge Eurofins for additional analytical support.

Internally, we recognize the contributions of our GIS team for their mapping expertise, Communications for their guidance and outreach, and Office of Environmental Excellence for their strategic support. Your collective efforts have been instrumental in the success of this initiative.

ADEQ's Statewide PFAS Sampling Project

Closeout Report



Overview

PFAS are a class of synthetic chemicals widely used in consumer products and industrial applications. These include stain- and water-resistant fabrics, firefighting foam, food packaging, and other manufacturing processes. PFAS are persistent in the environment and can accumulate in animals, humans, and ecosystems over time. Contaminated drinking water can be an exposure pathway. Long-term exposure to elevated levels of PFAS in drinking water has been linked to adverse health effects.

In April 2024, EPA released the final NPDWR, establishing MCLs for five PFAS compounds: perfluorooctanoic acid (PFOA), perfluorooctanesulfonic acid (PFOS), perfluorohexane sulfonic acid (PFHxS), perfluorononanoic acid (PFNA), and hexafluoropropylene oxide dimer acid (HFPO-DA). The regulation also includes a Hazard Index (HI) MCL to address combined exposures from multiple PFAS compounds in drinking water. As of November 2024, 945 of Arizona's PWS must monitor PFAS levels under the regulatory framework. These PWS consist of community water systems (CWS) and non-transient, non-community water systems (NTNCWS).

Chemical	Maximum Contaminant Level Goal	Maximum Contaminant Level
PFOA	Zero	4.0 parts per trillion (ppt)
PFOS	Zero	4.0 ppt
PFHxS	10 ppt	10 ppt
PFNA	10 ppt	10 ppt
HFPO-DA (commonly known as GenX Chemicals)	10 ppt	10 ppt
Mixture containing two or more of PFHxS, PFNA, HFPO-DA, and PFBS	Hazard Index of 1	Hazard Index of 1

Maximum Contaminant Level Goal (MCLG): The level of a contaminant in drinking water below which there is no known or expected risk to health. MCLGs allow for a margin of safety and are non-enforceable public health goals.

Maximum Contaminant Level (MCL): The highest level of a contaminant that is allowed in drinking water. MCLs are set as close to MCLGs as feasible using the best available treatment technology and taking cost into consideration. MCLs are enforceable standards.

ppt: parts per trillion

Hazard Index (HI): The HI is a long-established approach that EPA regularly uses to understand health risk from a chemical mixture (i.e., exposure to multiple chemicals). The HI is made up of a sum of fractions. Each fraction compares the level of each PFAS measured in the water to the health-based water concentration.

ADEQ has been sampling for PFAS since 2016, and in preparation for EPA's rule, ADEQ launched its statewide PFAS sampling project in November 2022, with the support of \$3 million in federal funding through the Safe Drinking Water Act. ADEQ's goal was to ensure that all PWS in Arizona subject to regulation under the PFAS rule—including those not covered by EPA's UCMR5—were tested for PFAS contamination to establish a comprehensive understanding of statewide water quality.



Scope of ADEQ's PFAS Sampling Initiative

EPA's UCMR5 testing mandates PFAS monitoring for PWS serving more than 3,300 customers. These 155 systems make up nearly 10 percent of all Arizona's PWS (Appendices J and K). To ensure a statewide understanding, ADEQ undertook a project to sample 752 CWS and NTNCWS serving fewer than 3,300 people. This ensured that under-resourced systems were provided with free sampling to meet regulatory requirements and provide ADEQ an understanding of PFAS across the State (Appendix B).

ADEQ's initiative, which complements the UCMR5 sampling effort, ensures that as many of Arizona's regulated PWS have been sampled for PFAS well ahead of the Initial Monitoring Requirements (IMR) deadline in the PFAS MCL rulemaking. This comprehensive approach reflects Arizona's commitment to public health protection and regulatory compliance.

Sampling Strategy and Process

ADEQ's statewide PFAS sampling project targeted 752 PWS that had not yet been tested by ADEQ, the PWS, or through the EPA's UCMR5 program. The project aimed to find and measure PFAS contamination statewide, while providing free baseline testing to smaller water systems that may lack the resources or capacity to conduct their own sampling. The project also aimed to determine baseline contamination levels to guide future mitigation efforts and support smaller systems in achieving compliance.

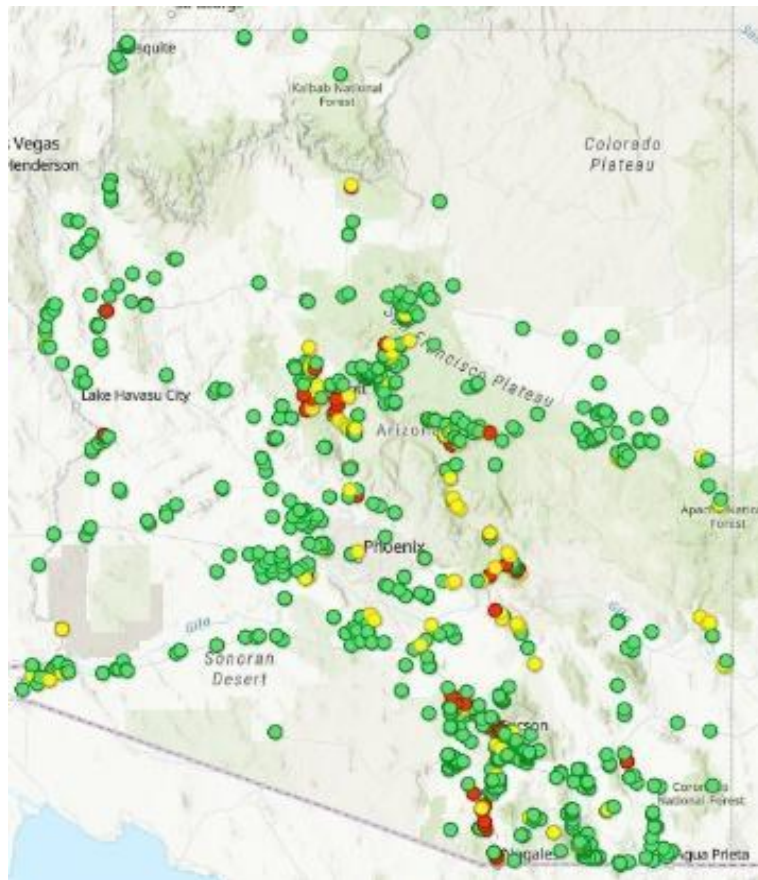
For participating systems, ADEQ collected samples over the course of two years using EPA Methods 533 and/or 537.1 (version 2). There were no costs to the PWS. If a PWS had already conducted PFAS sampling, then ADEQ requested the data.

Sampling process steps include:

1. **Preliminary Communications** - ADEQ or contractor support initially contacted each PWS identified for project participation. They were offered free sampling at compliance sample locations.
2. **Testing with EPA Methods** - Samples were collected using both EPA Method 533 and 537.1 (version 2). If water quality issues or limited sample volume arose, then Method 537.1 (version 2) was prioritized.
3. **Release Samples to State Certified Laboratory** - Collected samples were transported following required protocols to a state-certified laboratory for analysis.
4. **Receive, Review, and QC Analytical Lab Results** – Laboratories sent the test results electronically to ADEQ through the Compliance Monitoring Data Portal (CMDP). Once certified in CMDP, results were uploaded to ADEQ's Safe Drinking Water Information System (SDWIS) database. The SDWIS database serves as the central repository for all PFAS data collected in the ADEQ PFAS Sampling project, allowing data retrieval for analysis and retaining results as historical records.

ADEQ's Statewide PFAS Sampling Project Closeout Report

5. **Inform and Provide Support to PWS Owners** – PWS owners were provided their results via email in Excel and PDF formats. If ADEQ's testing results showed that a PWS has a PFAS detection, then ADEQ contacted the PWS to discuss EPA's recommendations that they:
 - a. Take steps to inform customers,
 - b. Conduct additional sampling to confirm levels, and
 - c. Evaluate measures to limit customer exposure.
6. **Results uploaded to ADEQ's [PFAS Interactive Map](#)** – The public can find the PWS names, sample locations, and their corresponding test results. The map also has more detailed context.

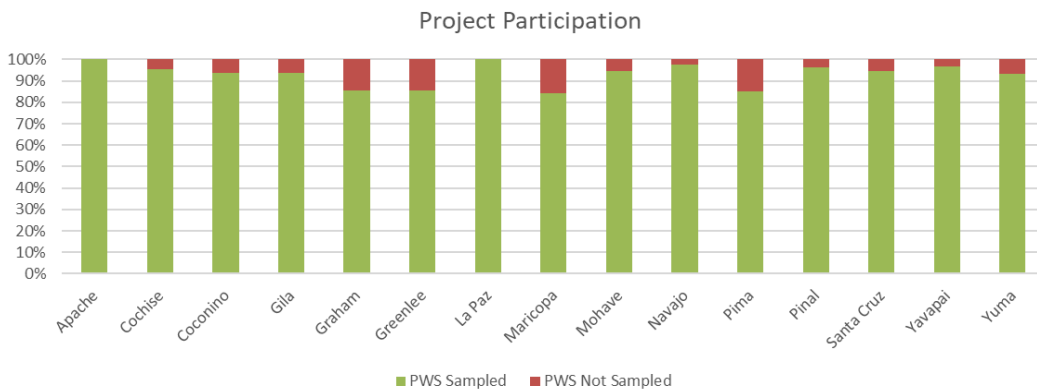




Results

Project Engagement and Involvement

ADEQ identified 752 PWS for participation in the PFAS sampling project. Data were successfully collected and analyzed from 693 PWS (Appendices C and D). Sampling and testing efforts started on December 16, 2022, and were completed on October 9, 2024.



A total of 59 PWS were either unreachable or declined participation. Common reasons provided anecdotally included:

- Legal or administrative advice discouraging participation
- Preference to conduct sampling and analysis independently
- Intentions to sell the water system, thus opting out of the project

All participating PWS were sampled at least once at each Entry Point to the Distribution System (EPDS) with one or more of the approved EPA methods. Over the course of the project, 8,277 samples were collected and analyzed.

The project achieved an average participation rate of 92 percent across all counties (Appendix C). Notably, 100 percent of systems in Apache and La Paz counties participated in the project (Appendix D).

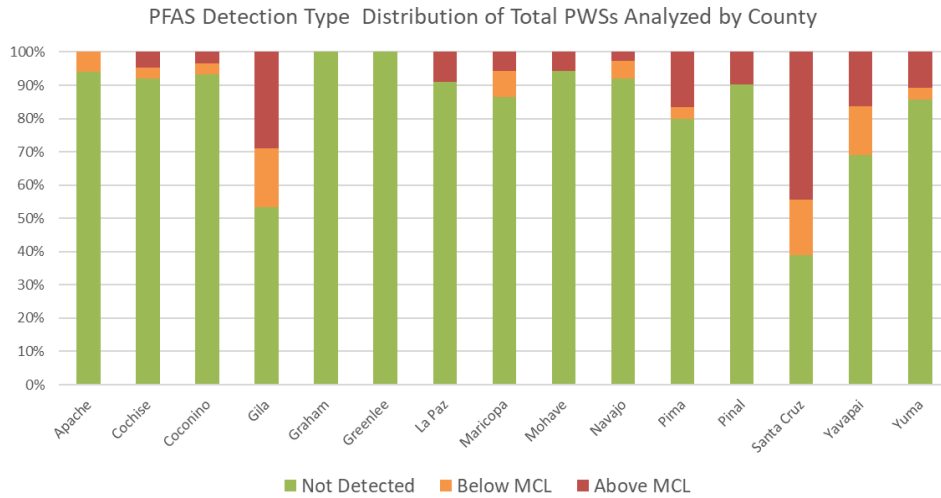
Categorization of PWS by Sampling Results

ADEQ categorized PWS into three categories based on sampling results:

1. **Not Detected** – All locations sampled and tested within the PWS showed no analytes that were above the Minimum Detection Limit (MDL) for any compounds under EPA Methods 533 or 537.1 (version 2).
2. **Below MCL** – At least one EPDS within the PWS yielded a result that met or was above the MDL for a PFAS compound, but remained below any MCL.

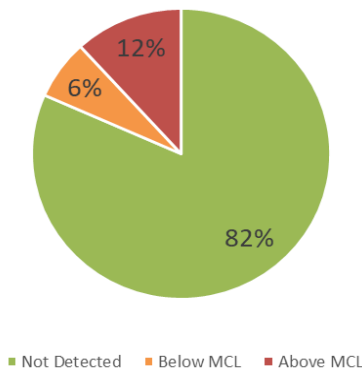


- Above MCL** – At least one EPDS showed a detection that was above the MCL for one or more of the regulated PFAS compounds.



The data collected showed that approximately 18 percent of all tested PWS detected PFAS. The distribution of the three groups is:

PFAS Detection Type Distribution of PWSs Analyzed



Based on the test results, ADEQ determined that 88 percent of the sampled systems meet compliance with the PFAS rule, which includes systems categorized as Not Detected and Below MCL. In contrast, 12 percent of systems had detections that were above at least one of the MCLs, which placed them in the Above MCL category (Appendix G).



Summary of *Above MCL* Findings

The percentage of PWS with at least one PFAS above an MCL was 12 percent across all counties in Arizona (Appendix I). Santa Cruz County had the highest percentage of PWS with Above MCL detections at 44 percent, followed by Gila County at 29 percent. The remaining counties had percentages below 17 percent. Three counties had no PFAS detections above the MCLs (Appendix J).

Summary of *Below MCL* Findings

The percentage of PWS found with PFAS levels above detection levels but below an MCL was 6 percent across all counties in Arizona (Appendix G). In this category Gila County had the highest percentage at 18 percent, followed by Santa Cruz and Yavapai at 17 percent and 15 percent respectively. The remaining counties had percentages equal to 8 percent or lower, with five counties that did not have PWS in this category (Appendix J).

Summary of *Not Detected* Findings

The percentage of PWS with no detections of any regulated PFAS was 82 percent across all counties in Arizona (Appendix G). Graham and Greenlee counties had the highest percentage of PWS without detections per county at 100 percent. Seven counties (Apache, Cochise, Coconino, Mohave, Navajo, Pinal, and La Paz) had rates between 90 percent and 94 percent. Only two counties had percentages less than 69 percent of their PWS in this category (Appendix J).

Summary of Findings for MCL Related PFAS Compounds

PFOA and PFOS were the PFAS compounds most frequently associated with detections above the MCLs across all tested PWS, highlighting their prevalence and potential impact on water quality in Arizona. Specifically, detections above the PFOA MCL were identified at 52 PWS using EPA Method 533 and 53 PWS using EPA Method 537.1 (Version 2). Similarly, detections above the PFOS MCL were observed at 50 PWS and 49 PWS for the same respective methods.

In contrast, neither of the two EPA-approved PFAS analytical methods detected GenX compounds in any of the tested PWS. Additionally, no detections above the MCL for PFNA were observed (Appendix L).



Findings & Recommendations

Key Takeaways

Effective Statewide Monitoring – ADEQ successfully sampled and analyzed water from 693 PWS, achieving an impressive 92 percent participation rate for small water systems across all counties. This proactive initiative ensured that smaller, under-resourced systems serving fewer than 3,300 customers received free, high-quality testing.

High Compliance-Equivalent Rates Across PWS – The majority of Arizona's PWS are serving water below EPA's PFAS MCLs. Approximately 82 percent of tested systems showed no detectable levels of PFAS, and 88 percent were classified as either Not Detected or Below MCL, indicating that most PWS meet the new federal regulations well ahead of the April 26, 2027, EPA compliance deadline.

Targeted Support for Smaller Communities – By prioritizing smaller and rural systems, ADEQ provided critical baseline data that will help these communities prepare for regulatory compliance. The agency has developed an objective, data-driven approach to prioritize available federal and state resources for impacted systems. These sampling results ensure ADEQ targets assistance for the systems most in need.

Geographic Insights – The results revealed that most counties had a high proportion of PWS with no detectable levels of PFAS. Counties such as Graham and Greenlee had 100 percent of their sampled systems at non-detection levels, while seven other counties had rates of over 90 percent.

Proactive Transparency and Public Engagement – This first phase of ADEQ's work has enabled the agency to share findings with the public through its [PFAS Interactive Map](#), which is accessible on ADEQ's website. This tool enhances transparency and empowers residents with valuable, location-specific information about PFAS detections across the state.

Comprehensive Understanding of PFAS Trends – The initiative provided valuable insights into PFAS contamination patterns statewide. While certain compounds, such as PFOA and PFOS, were detected in a small percentage of systems, no GenX compounds or PFNA above its MCL were detected.

Future Plans and Expansion – ADEQ plans to build on the data collected during Phase 1 by expanding the project and offering additional testing opportunities to help PWS meet the EPA's IMR requirements under the PFAS Rule. By having PFAS results in the required format for EPA uploads, ADEQ can quickly and efficiently align with federal requirements, ensuring Arizona remains a leader in PFAS monitoring and public health protection.

Guidance on Drinking Water from PWS in Relation to PFAS

If PFAS levels are above an MCL, then the PWS must take corrective action to meet compliance by **April 26, 2029**, ensuring the safety of drinking water.



To guide these PWS corrective actions, ADEQ has developed [PFAS Decision Trees](#). This tool provides a structured framework to support water systems' engineers in evaluating mitigation options and prioritizing next steps efficiently.

Potential Mitigation Strategies:

1. **Establishing a New Water Source**
 - Drilling a new well,
 - Connecting with another system (interconnection),
 - Consolidating systems for a more reliable water source.
2. **Modifying Existing Water Sources**
 - Blending water from multiple sources to dilute PFAS concentrations,
 - Adjusting the depth of wells to access cleaner groundwater.
3. **Recommended Treatment Technologies**
 - **Granular Activated Carbon (GAC):** Proven effective for removing long-chain PFAS compounds such as PFOA and PFOS,
 - **Ion Exchange:** Suitable for both long- and short-chain PFAS removal,
 - **Reverse Osmosis/Nanofiltration:** Provides high removal efficiency across various PFAS compounds.

These mitigation measures ensure PWS are compliant with EPA regulations while protecting public health and safety.

Additional Resources for Public Awareness

- [PFAS Map](#): Available on ADEQ's website, this tool allows the public to explore where PFAS contamination has been detected across the state.
- [Webinars and Educational Videos](#): ADEQ provides accessible online resources to further inform and educate, available through our YouTube playlist.



Future Steps for ADEQ and What's Next

ADEQ will continue to support PWS by providing comprehensive PFAS guidance and education to PWS owners, operators, and engineers.

With state and federal funding available, ADEQ will prioritize providing mitigation efforts and treatment support to the systems most in need. These initiatives will fund tailored solutions for participating PWS. ADEQ will manage all associated payments, except for operational and maintenance costs which will remain the individual systems' responsibility.

Regulatory Milestones for Public Water Systems

To ensure the continued delivery of safe drinking water and reduce PFAS risks, all CWS and NTNCWSs must report the results of initial monitoring, as described in 40 CFR [§ 141.902\(b\)\(1\)](#), to the State by **April 26, 2027 and meet:**

- Initial compliance monitoring requirements in [§ 141.902\(b\)\(2\)](#) by **April 26, 2027**.
- MCL compliance requirements in [§ 141.903](#) by **April 26, 2029**.
- Reporting and recordkeeping requirements in [§ 141.904](#) by **April 26, 2027**.

Through proactive testing, prioritized mitigation efforts, and clear regulatory guidance, ADEQ is committed to ensuring that Arizona's PWS are in compliance and that residents have access to reliable and safe drinking water.



Appendices

A. Acronym List

- ADEQ – Arizona Department of Environmental Quality
- CMDP – Compliance Monitoring Data Portal
- CWS – Community Water System
- CCR – Consumer Confidence Report
- EPA – Environmental Protection Agency
- EPDS – Entry Point to the Distribution System
- GenX – Hexafluoropropylene oxide dimer acid
- HI – Hazard Index
- IMR – Initial Monitoring Requirements
- MCL – Maximum Contaminant Level
- MCLG – Maximum Contaminant Level Goal
- NPDR – National Public Drinking Water Regulation
- NTNCWS – Non-Transient, Non-Community Water System
- O&M – Operation & Maintenance
- OEE – Office of Environmental Excellence
- PFAS – Per- and polyfluoroalkyl substances
- PFHxS – Perfluorohexane Sulfonic acid
- PFNA – Perfluorononanoic acid
- PFOA – Perfluorooctanoic acid
- PFOS – Perfluorooctanesulfonic acid
- PPT – Parts Per Trillion
- PWS – Public Water System
- SDWIS – Safe Drinking Water Information System (database)
- TNCS – Transient Non-Community System
- UCMR5 – Unregulated Contaminant Monitoring Rule 5

ADEQ's Statewide PFAS Sampling Program

Closeout Report



B. PWS Project Participation List

PWS #	PWS Name	PWS #	PWS Name
AZ0401001	ALPINE DWID	AZ0410007	GW- LYN LEE WATER COMPANY
AZ0401010	PINECREST WATER COMPANY	AZ0410008	POCKETKNIFE WATER CO OP
AZ0401013	SPRINGVILLE TOWN OF	AZ0410010	MARANA TANGERINE BUSINESS PARK
AZ0401015	TIMBER KNOLL DWID	AZ0410011	RIO VIEJO WATER
AZ0401018	LIVCO WATER COMPANY	AZ0410046	METROPOLITAN DWID - E&T SYSTEM
AZ0401019	VERNON DWID	AZ0410047	SASABE BORDER VILLAGE
AZ0401022	SANDERS SCHOOL DISTRICT	AZ0410048	GW - SAHUARITA
AZ0401039	OJO BONITO ESTATES DWID	AZ0410057	HALCYON ACRES WATER USERS ASSOCIATION
AZ0401043	TUCSON ELECTRIC POWER	AZ0410058	HALCYON ACRES 2
AZ0401047	LORD AZ WATER 2 - WINCHESTER TRAILS	AZ0410063	LAKWOOD ESTATES WATER COMPANY
AZ0401049	CEDAR GROVE WATER COMPANY	AZ0410065	LAZY C WATER SERVICE
AZ0401054	VERNON VALLEY WATER SYSTEM	AZ0410070	MARANA DWID - CULVER
AZ0401056	ASPC APACHE	AZ0410074	MESALAND WATER COMPANY
AZ0401076	SHOW LOW PINES WELL 3	AZ0410093	SANDARIO WATER COMPANY
AZ0401345	THE GATEWAY	AZ0410098	RILLITO WATER USERS ASSOC
AZ0401354	SRP CORONADO GENERATING STATION	AZ0410101	SAMALAYUCA IMPROVEMENT ASSOC
AZ0401372	SHOW LOW CROSSROADS HOA	AZ0410117	THIM UTILITY COMPANY
AZ0402006	BOWIE WID	AZ0410118	WHY DWID
AZ0402007	BELLA VISTA WATER SOUTH	AZ0410119	WINTERHAVEN WATER DEVELOPMENT
AZ0402008	CLEAR SPRINGS UTILITY MAIN	AZ0410127	SPANISH TRAIL WATER COMPANY
AZ0402009	CLOUD NINE WATER COMPANY	AZ0410128	LOS CERROS WATER COMPANY INC
AZ0402011	SOUTHERN SUNRISE WC COCHISE HORSESHOE	AZ0410132	WORDEN WATER COMPANY
AZ0402012	POMERENE DWID	AZ0410136	MARANA MUNICIPAL-PALO VERDE
AZ0402013	NORTHERN SUNRISE WC CORONADO	AZ0410138	MARANA MUNICIPAL - AIRLINE LAMBERT
AZ0402015	DRAGOON WATER COMPANY	AZ0410139	MARANA DWID - DERRINGER
AZ0402016	MCNEAL WATER COMPANY	AZ0410140	MT LEMMON DWID

ADEQ's Statewide PFAS Sampling Program

Closeout Report



PWS #	PWS Name	PWS #	PWS Name
AZ0402017	ELFRIDA WID	AZ0410142	RANCHO DEL CONEJO COMM WATER CO
AZ0402018	HOLIDAY WATER COMPANY	AZ0410144	GW- RINCON WATER COMPANY
AZ0402019	TOWN OF HUACHUCA CITY	AZ0410152	VALLE VERDE DEL NORTE
AZ0402023	SOUTHERN SUNRISE WC MIRACLE VALLEY	AZ0410154	GW - TORTOLITA WATER COMPANY
AZ0402024	NACO WATER CO MAIN	AZ0410158	TUCSON WATER VALLEY VIEW ACRES
AZ0402026	PALOMINAS WATER SEWER CO	AZ0410159	TUCSON WATER DIAMOND BELL
AZ0402027	SAN SIMON DWID	AZ0410162	TUCSON WATER SILVERBELL WEST
AZ0402028	EAST SLOPE WATER COMPANY	AZ0410171	TUCSON WATER CATALINA
AZ0402029	SOUTHLAND UTILITIES - GOLDEN ACRES	AZ0410173	TUCSON WATER RANCHO DEL SOL LINDO
AZ0402033	TOMBSTONE CITY OF	AZ0410177	SAGUARO WATER COMPANY
AZ0402036	CS SUNIZONA WATER COMPANY	AZ0410178	GW -MIRABELL WATER COMPANY
AZ0402038	WHETSTONE DWID	AZ0410179	TUCSON WATER THUNDERHEAD
AZ0402039	ST DAVID DWID	AZ0410188	DESERT WATER COOP
AZ0402040	COCHISE COLLEGE PARK WATER ASSOC	AZ0410197	ACCELERATED LEARNING CENTER
AZ0402041	LA COSTA WATER USERS ASSOC	AZ0410199	RINCON MESA LANDOWNERS
AZ0402042	WILLOW LAKES PROPERTY OWNERS ASSOC	AZ0410200	BAYER R&D SERVICES LLC - MARANA
AZ0402043	MONTE VISTA WATER COMPANY	AZ0410206	THIM UTILITY COMPANY - WELL 9
AZ0402045	PARKER LAKEVIEW ESTATES	AZ0410207	THIM UTILITY CORPORATION - VFW
AZ0402049	CLEAR SPRINGS UTILITY WELL 6	AZ0410208	SIERRITA MOUNTAIN WATER CO-OP
AZ0402052	MESCAL LAKES WATER SYSTEM	AZ0410214	SALPOINTE CATHOLIC HIGH SCHOOL
AZ0402054	NORTHERN SUNRISE WC MUSTANG CRYSTAL	AZ0410218	METROPOLITAN DWID - LAZY B
AZ0402061	BISBEE DOUGLAS INTL AIRPORT	AZ0410219	CATALINA VILLAGE
AZ0402063	COCHISE COUNTY COMMUNITY COLLEGE DISTRICT	AZ0410222	TUCSON RACQUET SWIM CLUB
AZ0402066	PALOMINAS ELEMENTARY	AZ0410228	THIM UTILITY COMPANY 2
AZ0402071	ASH CREEK ELEMENTARY SCHOOL	AZ0410242	SIETE CASA JOINT VENTURE
AZ0402072	COCHISE ELEMENTARY SCHOOL	AZ0410258	CATERPILLAR INC
AZ0402073	PEARCE ELEMENTARY SCHOOL	AZ0410260	DOME WELL COOP

ADEQ's Statewide PFAS Sampling Program

Closeout Report



PWS #	PWS Name	PWS #	PWS Name
AZ0402075	STRATMAN WATER COMPANY	AZ0410264	THIM WATER COMPANY 2
AZ0402076	DOUBLE ADOBE SCHOOL	AZ0410265	WILDFLOWER WATER COOP
AZ0402082	SIERRA VISTA AIRPORT	AZ0410268	SHAE WATER COMPANY
AZ0402083	MCNEAL ELEMENTARY SCHOOL	AZ0410269	WELLS FARGO WATER COMPANY
AZ0402094	EAST SLOPE WATER - WEST	AZ0410270	TUCSON WATER SIERRITA FOOTHILLS
AZ0402100	SUNRISE MOBILE HOME PARK	AZ0410272	RANCHO TIERRA BLANCA POA
AZ0402101	SIERRA VISTA MH VILLAGE	AZ0410278	RAINDANCE WATER COOP
AZ0402102	CORONADO ELEMENTARY	AZ0410281	PANTANO WATER COOP
AZ0402104	WHETSTONE VILLAGE MHP	AZ0410282	HIGH CHAPARRAL WATER COOP
AZ0402105	ASHLEY ROSE MHP	AZ0410283	GW- FRANCESCA WATER COMPANY TALA WAY
AZ0402110	CS WINCHESTER WATER COMPANY	AZ0410286	RANCHO SIERRITA WELL ASSOC
AZ0402112	NACO WATER CO BISBEE	AZ0410311	SUPERSTITION WATER COOP
AZ0402116	VALLEY VIEW ELEMENTARY	AZ0410317	GW- FRANCESCA WATER CO AMBER ANN
AZ0402120	SULGER WATER COMPANY 2	AZ0410319	MOBILE HOME PROPERTIES
AZ0402122	EMPIRITA WATER COMPANY	AZ0410330	TRICO ELECTRIC CO-OP
AZ0402123	DOUGLAS BORDER PATROL STATION	AZ0410350	MARANA CORRECTIONAL FACILITY
AZ0402125	WHETSTONE RANCH WATER SYSTEM	AZ0410351	THIM UTILITY COMPANY - RANCHO VISTA
AZ0402300	APACHE NITROGEN PRODUCTS	AZ0410354	ANWAY MANVILLE WATER COMPANY
AZ0402327	SWEET SPRINGS MOBILE HOME PARK	AZ0410400	KLAFTER WELL COOP
AZ0402345	NACO ESTATES	AZ0410402	WILMOT WATER USERS GROUP
AZ0402353	DESERT WINDS MOBILE PARK	AZ0410404	ORACLE NORTH HOME OWNERS ASSOC
AZ0402355	AZ ELECTRIC POWER APACHE	AZ0410405	KAHLUA WELL COOP
AZ0402357	SOUTHWESTERN RESEARCH STATION	AZ0410406	MARANA MUNICIPAL- AIRPORT
AZ0402360	TWIN BUTTES MOBILE HOME & RV PARK	AZ0410409	LA CASITA WATER COMPANY 1
AZ0402399	FIESTA CANNING CO INC	AZ0410410	LA CASITA WATER COMPANY 2
AZ0402401	NTM AVIATION	AZ0410411	TIERRA LINDA HOA WATER COMPANY

ADEQ's Statewide PFAS Sampling Program

Closeout Report



PWS #	PWS Name	PWS #	PWS Name
AZ0402403	VALLEY UNION HIGH SCHOOL	AZ0410414	GW - SAHUARITA HIGHLANDS
AZ0402404	THE PHARM	AZ0410435	PICO VISTA COMMUNITY WELL
AZ0402409	JOHNSON CAMP MINE WATER	AZ0410445	GATOR WATER
AZ0402705	ASPB KARTCHNER CAVERNS	AZ0410450	SHILOH WATER COMPANY
AZ0403004	OAK CREEK UTILITY CORP	AZ0410481	GARIGANS GULCH WATER COOP
AZ0403006	CAMERON TRADING POST	AZ0410701	ORGAN PIPE NM HEADQUARTERS
AZ0403009	FREDONIA TOWN OF	AZ0410810	WILDCAT ONE WELL COOP
AZ0403010	ADOT AIRPORT GRAND CANYON	AZ0411003	ARAVAIPA WATER COMPANY
AZ0403011	HECKETHORN WATER COMPANY	AZ0411005	SILVERBELL IRRIGATION & DRAINAGE DIST
AZ0403015	MOUNTAIN DELL WATER INC	AZ0411012	ARIZONA WATER CO - STANFIELD
AZ0403018	PONDEROSA UTILITY CORP	AZ0411018	MAMMOTH TOWN OF
AZ0403021	CS WEST VILLAGE WATER COMPANY	AZ0411022	BIDEGAIN WATER COMPANY
AZ0403024	TALL PINES ESTATES WATER	AZ0411024	AWC - CASA GRANDE WEST WATER COMPANY
AZ0403026	WILLIAMS CITY OF	AZ0411031	KEARNY TOWN OF
AZ0403032	FOREST LAKES WATER IMPROVEMENT DISTRICT	AZ0411034	MARANA AEROSPACE SOLUTIONS
AZ0403037	GREENEHAVEN WATER COMPANY	AZ0411035	KELVIN SIMMONS COOP
AZ0403044	MAJESTIC VIEW WATER IMPROVEMENT DISTRICT	AZ0411036	MARICOPA CONSOLIDATED DWID
AZ0403061	NEWTON WATER WELL	AZ0411037	ARIZONA TRAINING PROGRAM
AZ0403063	BLUE RIDGE DWID	AZ0411042	PICACHO DWID
AZ0403067	LAKE MARY COUNTRY STORE	AZ0411044	QUEEN VALLEY DWID
AZ0403069	STURGEON CROMER ELEM SCHOOL	AZ0411045	JO COMBS ELEMENTARY SCHOOL
AZ0403073	FOREST HIGHLANDS WATER COMPANY	AZ0411052	TONTO BASIN WATER - CACTUS FOREST
AZ0403081	LIVING SPRINGS MHP - RAINBOW TROUT FARM	AZ0411062	THE OAKS MOBILE HOME PARK
AZ0403084	VALLE AIRPORT GRAND CANYON	AZ0411072	PICACHO ELEMENTARY SCHOOL DISTRICT

ADEQ's Statewide PFAS Sampling Program

Closeout Report



PWS #	PWS Name	PWS #	PWS Name
AZ0403087	A1 RANCH HOMEOWNERS ASSOCIATION INC.	AZ0411076	ARIZONA WATER CO - TIERRA GRANDE
AZ0403088	FLAGSTAFF RANCH WATER COMPANY	AZ0411077	CENTRAL AZ COLLEGE ARAVAIPA
AZ0403101	STAR CHARTER SCHOOL	AZ0411078	RESOLUTION COPPER COMPANY
AZ0403105	BEARIZONA	AZ0411079	SIGNAL PEAK WATER COMPANY
AZ0403175	LOCKETT ESTATES	AZ0411085	NISSAN TECHNICAL CENTER
AZ0403299	SAGE VALLEY MHP	AZ0411087	MARICOPA MOUNTAIN DWID 1
AZ0403300	UTILITY SOURCE LLC	AZ0411090	DAVIS RANCH LAND OWNERS
AZ0403312	HYDRO RESOURCES-TUSAYAN	AZ0411097	PAPAGO BUTTE DWID
AZ0403331	JACOB LAKE LODGE	AZ0411100	THUNDERBIRD FARMS DWID
AZ0403362	HIDDEN HOLLOW MHC	AZ0411106	VORELCO TEST FACILITY
AZ0403385	PAINTED DESERT DEMO PROJECT STAR SCHOOL	AZ0411111	SUN VALLEY FARMS UNIT VI
AZ0403394	BELLEMONT WATER COMPANY	AZ0411129	DESERT GARDENS RV RESORT CO-OP, INC
AZ0404001	ASARCO HAYDEN SMELTER	AZ0411130	GOODMAN WATER COMPANY
AZ0404003	ARIZONA WATER CO - WINKELMAN	AZ0411132	RANCHES AT MARICOPA WATER
AZ0404004	BEAVER VALLEY WATER COMPANY	AZ0411135	PICACHO WATER COMPANY
AZ0404005	CS CHRISTOPHER CREEK HAVEN	AZ0411160	GW - SCWC, INC. - RED ROCK UTILITIES
AZ0404011	FREEMPORT MCMORAN MIAMI - BARNEY	AZ0411185	NISSAN TECHNICAL CENTER DRIVERS AREA
AZ0404012	ASARCO HAYDEN OPERATIONS	AZ0411201	NORTHERN SECTION 4 COOP
AZ0404013	KOHL'S RANCH WATER COMPANY	AZ0411315	BREEZEWAY TRAILER PARK
AZ0404015	PAYSON WATER - MEADS RANCH	AZ0411321	VILLA GRANDE DWID
AZ0404016	PINE WATER ASSOCIATION DWID	AZ0411322	MARICOPA MOUNTAIN DWID 2
AZ0404020	PONDEROSA WATER, L.L.C	AZ0411324	INDIAN HILLS ESTATES
AZ0404021	TONTO CREEK WATER COMPANY	AZ0411334	SUNLAND WATER COMPANY
AZ0404022	LAKE ROOSEVELT GARDENS EAST	AZ0411354	MARICOPA AGRICULTURE CENTER
AZ0404023	CS TONTO VILLAGE WATER COMPANY	AZ0411365	WHISPERING WIND MOBILE HOME PARK
AZ0404024	BONITA CREEK WATER COMPANY	AZ0411381	SAGUARO MOBILE HOME PARK

ADEQ's Statewide PFAS Sampling Program

Closeout Report



PWS #	PWS Name	PWS #	PWS Name
AZ0404026	PAYSON WATER - EAST VERDE ESTATES	AZ0411383	SIERRA VISTA RV PARK
AZ0404027	PAYSON WATER - FLOWING SPRINGS	AZ0411405	BIOSPHERE II
AZ0404028	GERONIMO ESTATES	AZ0411407	PARK WATER COMPANY INC
AZ0404029	JAKES CORNER WATER SYSTEM	AZ0411409	VALLE ESCONDIDO
AZ0404030	PAYSON WATER - MESA DE CABALLO	AZ0411556	SKYLINE RESORT RV PARK
AZ0404035	RIM TRAIL DWID	AZ0411565	SCOTTS MIRACLE GRO
AZ0404036	TONTO BASIN WATER ROOSEVELT LAKE ESTATES	AZ0411703	SILVER BELL ARMY HELIPORT
AZ0404037	TOWN OF STAR VALLEY WATER DEPARTMENT	AZ0411707	AWC - COOLIDGE CITY OF MUNICIPAL AIRPORT
AZ0404039	PAYSON WATER - WHISPERING PINES	AZ0411708	ARIZONIAN RV RESORT
AZ0404044	PINE CREEK CANYON DWID	AZ0411712	ANTELOPE PEAK DWID
AZ0404047	TONTO BASIN WATER - LR GARDENS WEST	AZ0412001	EPCOR - TUBAC
AZ0404049	NORTH BAY ESTATES	AZ0412005	SONOITA VALLEY (SOUTH) WATER COMPANY
AZ0404055	TONTO BASIN SCHOOL DISTRICT 33	AZ0412009	VALLE VERDE WATER COMPANY - EAST
AZ0404063	YOUNG PUBLIC SCHOOL	AZ0412012	CS SANTA CRUZ WATER CO
AZ0404064	PAYSON WATER - DEER CREEK	AZ0412015	KINO RANCH 2
AZ0404083	ARROYO WATER COMPANY	AZ0412019	ADOT BORDER PATROL
AZ0404090	STRAWBERRY HOLLOW DWID	AZ0412020	CASAS ARROYO ASSOCIATION INC
AZ0404092	HOUSTON CREEK PARK	AZ0412025	VALLE VERDE WATER COMPANY - WEST
AZ0404101	JAKES CORNER RV PARK	AZ0412035	ELGIN SCHOOL
AZ0404104	W RANCH RESORT	AZ0412037	BACA FLOAT WATER COMPANY
AZ0404112	CANYON WATER IMPROVEMENT DISTRICT	AZ0412040	TRUJILLO TRAIL DWID
AZ0404141	LIL W RANCH	AZ0412044	AVALON GARDENS WATER SYSTEM
AZ0404200	ROOSEVELT RESORT LLC	AZ0412045	CRISANTES GREENHOUSE WATER SYSTEM

ADEQ's Statewide PFAS Sampling Program

Closeout Report



PWS #	PWS Name	PWS #	PWS Name
AZ0404300	APACHE MOBILE HOME AND RV PARK, LLC	AZ0412101	AMADO MANAGEMENT LLC
AZ0404314	MOUNTAIN GATE ESTATES MHP	AZ0412305	THE GRAND ACRES
AZ0404318	TWIN LAKES MOBILE HOME PARK	AZ0412306	MOUNTAIN VIEW RV RANCH
AZ0404321	PINTO VALLEY MINE	AZ0412308	SONOITA VALLEY (NORTH) WATER COMPANY
AZ0404324	LAMPLIGHTER RV RESORT	AZ0412311	TOWN & COUNTRY - PRESTON
AZ0404332	AUGUST HILLS MHP	AZ0412321	RED ROCK ACRES HOA
AZ0404341	QUAIL RUN WATER SYSTEM	AZ0413001	ABRA WATER COMPANY
AZ0404342	ROOSEVELT RANCH RV & MHP	AZ0413008	ASH FORK WATER SERVICE
AZ0404346	GISELA	AZ0413010	YAVAPAI WATER COMPANY
AZ0404356	H A V PROPERTIES, LLC	AZ0413011	FREEPORT MCMORAN BAGDAD TOWN
AZ0404400	RIM COUNTRY ESTATES MHP	AZ0413016	CATHEDRAL VISTA WATER COMPANY
AZ0405001	GRAHAM COUNTY UTILITIES-FORT THOMAS	AZ0413020	COLDWATER CANYON 1
AZ0405002	GRAHAM COUNTY UTILITIES - PIMA	AZ0413021	CONGRESS DWID
AZ0405003	EDEN WATER COMPANY INC	AZ0413023	CORDES LAKES WATER COMPANY
AZ0405006	BONITA PUBLIC SCHOOL	AZ0413026	LAKESIDE WATER COMPANY
AZ0405007	ASH CREEK WATER COMPANY	AZ0413027	CROWN KING WATER COMPANY
AZ0405303	ADOC ASPC FORT GRANT	AZ0413028	CUP OF GOLD WATER COMPANY
AZ0405312	FREEPORT MCMORAN SAFFORD	AZ0413029	ACME WATER -DELLS WATER
AZ0406001	DUNCAN TOWN OF	AZ0413030	GRANITE DELLS WATER COMPANY
AZ0406002	MORENCI WATER ELEC CO CLIFTON	AZ0413036	JACKSON ACRES DWID
AZ0406003	MORENCI WATER ELEC CO MAIN	AZ0413037	JEROME TOWN OF
AZ0406004	CS VERDE LEE WATER COMPANY	AZ0413038	CS LAKE VERDE WATER COMPANY
AZ0406005	CS LOMA LINDA WATER COMPANY	AZ0413039	MAYER DWID
AZ0406009	HUNTER WATER - TOWN OF DUNCAN	AZ0413040	GROOM CREEK WATER USERS
AZ0406305	VALLEY VIEW MHC & RV PARK	AZ0413041	OAK CREEK WATER DISTRICT
AZ0407001	ADAMAN MUTUAL WATER COMPANY	AZ0413042	OAK CREEK PUBLIC SERVICE LLC

ADEQ's Statewide PFAS Sampling Program

Closeout Report



PWS #	PWS Name	PWS #	PWS Name
AZ0407003	AGUILA WATER SERVICE	AZ0413043	PINEHURST WATER COMPANY
AZ0407008	BERNEIL WATER COMPANY	AZ0413049	SHERMAN PINES WATER COMPANY
AZ0407012	CABALLEROS WATER COMPANY	AZ0413051	BLACK CANYON CITY WID
AZ0407016	CAVE CREEK WATER	AZ0413052	HUMBOLDT WATER SYSTEM
AZ0407019	CLEARWATER UTILITY COMPANY INC	AZ0413055	ACME WATER - BLUE HILLS
AZ0407021	COUNTRY CLUB ACRES WATER INC	AZ0413057	YARNELL WATER IMPROVEMENT ASSOCIATION
AZ0407030	GW- BWC, INC- DIXIE	AZ0413059	VERDE LAKES WATER - DINKY CREEK
AZ0407032	GW -BWC, INC- EAGLETAIL	AZ0413060	COTTONWOOD MUNICIPAL WATER VV 1
AZ0407037	GW- BWC, INC- GARDEN CITY	AZ0413062	BRADSHAW MOUNTAIN VIEW WATER
AZ0407039	GRANDVIEW WATER COMPANY	AZ0413066	ALCO CENTER
AZ0407048	MOBILE ELEMENTARY SCHOOL DISTRICT 86	AZ0413071	MONTEZUMA RIMROCK WATER COMPANY
AZ0407064	CHAPARRAL WATER COMPANY	AZ0413072	TOWN OF CAMP VERDE - VERDE RIVER ESTATES
AZ0407067	WEST END WATER COMPANY - WITTMAN	AZ0413074	RED ROCK CROSSING MOBILE VILLAGE
AZ0407069	GILA BEND TOWN OF	AZ0413075	LITTLE PARK WATER COMPANY
AZ0407071	GW -BWC, INC- SUNSHINE	AZ0413077	ACME WATER - YAVAPAI ESTATES
AZ0407072	TALIESIN WEST	AZ0413078	CS PEEPLES VALLEY WATER COMPANY
AZ0407073	TIERRA BUENA WATER COMPANY	AZ0413079	CHINO MEADOWS II
AZ0407082	GW- BWC, INC- ROSEVIEW	AZ0413081	CAMP VERDE SCHOOL DIST 28
AZ0407086	MOBILE GARDENS DWID	AZ0413084	BEAVER CREEK SCHOOL
AZ0407111	MORRISTOWN WATER COMPANY	AZ0413090	HILLSIDE SCHOOL
AZ0407112	BROOKE WATER LLC - CIRCLE CITY WC	AZ0413091	KIRKLAND SCHOOL
AZ0407114	VWC BUCKEYE DIV BULFER PRIMROSE	AZ0413095	OAK CREEK ELEMENTARY SCHOOL
AZ0407140	MCPRD - LAKE PLEASANT	AZ0413096	THE ORME SCHOOL
AZ0407167	WEST END WATER COMPANY - WHEAT	AZ0413098	SKULL VALLEY SCHOOL DIST 15
AZ0407169	SAGUARO VIEW MGMT COMPANY	AZ0413103	PINE VALLEY WATER COMPANY

ADEQ's Statewide PFAS Sampling Program

Closeout Report



PWS #	PWS Name	PWS #	PWS Name
AZ0407178	PALOMA SCHOOL DIST 94	AZ0413104	COTTONWOOD MUNICIPAL WATER VV2
AZ0407179	GWR - NORTHERN SCOTTSDALE WATER CO. INC.	AZ0413105	COTTONWOOD MUNICIPAL WATER VV3
AZ0407182	BROPHY COLLEGE PREPARATORY	AZ0413108	SEDONA VENTURE WATER COMPANY
AZ0407189	OUTLETS NORTH PHOENIX	AZ0413109	MICHAELS RANCH WATER USERS ASSOCIATION
AZ0407192	REMUDA RANCH DEL SOL AT THE MEADOWS	AZ0413113	PHILADELPHIA WATER SYSTEM
AZ0407195	VWC BUCKEYE DIVISION SUN VALLEY	AZ0413114	AWC - VALLEY VISTA
AZ0407200	TOYOTA PROVING GROUNDS/TECH CENTER	AZ0413116	MINGUS UNION HIGH SCHOOL
AZ0407280	67 AVE PROPERTY OWNERS ASSOCIATION	AZ0413119	CATHEDRAL ROCK ESTATES WATER COOP
AZ0407281	TRAVEL CENTERS OF AMERICA	AZ0413121	OAK CREEK VALLEY
AZ0407286	ALMA RANCHETTES	AZ0413122	SOFTWINDS MOBILE HOME PARK
AZ0407296	GERMANN WATER	AZ0413125	ENCHANTMENT RESORT
AZ0407303	RELIANCE JRC GOODYEAR	AZ0413126	FREEPORT MCMORAN BAGDAD BIG SANDY
AZ0407307	ADJC ADOBE MOUNTAIN SCHOOL	AZ0413127	VERDE VALLEY MANOR
AZ0407335	SENTINEL ELEMENTARY SCHOOL	AZ0413130	VERDE LAKES WATER - BIG VALLEY
AZ0407343	COUNTRY HOME MHP	AZ0413137	CHINO VALLEY TOWN OF
AZ0407360	RUTH FISHER SCHOOL	AZ0413141	BRADSHAW WATER COMPANY INC
AZ0407366	HACIENDA DEL SOL MHP	AZ0413148	ESCAPEES AT NORTH RANCH
AZ0407371	TRAIL WEST RV RESORT	AZ0413150	GRANITE MOUNTAIN WATER COMPANY
AZ0407392	BUCKEYE ACRES MHP	AZ0413151	FIRST STEPS CHILD CARE
AZ0407400	PALO VERDE SCHOOL DISTRICT 49	AZ0413155	GRANITE OAKS WATER USERS ASSOCIATION
AZ0407401	LIBERTY ELEMENTARY SCHOOL	AZ0413159	RANCH PLAZA
AZ0407409	CHANDLER HEIGHTS CITRUS IRRIGATION DIST	AZ0413164	COTTONWOOD MUNICIPAL WATER VSF1
AZ0407411	PALOMA RANCH	AZ0413175	DR DANIEL BRIGHT ELEMENTARY SCHOOL
AZ0407412	PALO VERDE NUCLEAR GENERATING STATION	AZ0413184	WALDEN MEADOWS COMM COOP

ADEQ's Statewide PFAS Sampling Program

Closeout Report



PWS #	PWS Name	PWS #	PWS Name
AZ0407438	JBS TOLLESON	AZ0413190	MONTEZUMA HEIGHTS WATER
AZ0407459	NATIONAL MEMORIAL CEMETERY	AZ0413192	COLDWATER CANYON 2
AZ0407477	PAI DOMESTIC	AZ0413193	CHIMNEY ESTATES
AZ0407478	AGUILA ELEMENTARY SCHOOL	AZ0413202	COLDWATER CANYON 3
AZ0407482	RANCHO WELLS INC	AZ0413208	APPALOOSA WATER COMPANY
AZ0407484	OLIVE AVENUE HOA	AZ0413213	ROSEWOOD RANCH
AZ0407492	GREENFIELD RANCHETTES	AZ0413218	CHINO VALLEY TOWN COMPLEX
AZ0407493	G LAZY B MOBILE HOME PARK	AZ0413221	WHITE HORSE RANCH OWNERS ASSOCIATION
AZ0407511	BEARDSLEY WATER COMPANY 3	AZ0413228	GRACE BAPTIST CHURCH
AZ0407515	GENTLE PATH AT THE MEADOWS	AZ0413233	AZ PUBLIC SERVICE CO CAMP VERDE WATER
AZ0407517	PATTON PLACE ESTATES	AZ0413247	MINGUS WEST WATER SYSTEM
AZ0407518	NEW HARQUAHALA GENERATING STATION	AZ0413248	SEVEN CANYONS OF SEDONA
AZ0407524	TWO TANKS COMMUNITY WELL	AZ0413250	IMMACULATE CONCEPTION CHURCH
AZ0407525	WESTSIDE INDUSTRIAL INVESTMENTS LLC	AZ0413251	YAVAPAI COMMUNITY COLLEGE AGRICULTURAL
AZ0407526	CITY OF BUCKEYE TARTESSO WATER SYSTEM	AZ0413256	CROSS CREEK RANCH
AZ0407528	PEAK VIEW RANCH	AZ0413257	MODEL CREEK ELEMENTARY
AZ0407535	NORTHWEST REGIONAL DEER VALLEY LANDFILL	AZ0413258	AMERICAN RANCH DWID
AZ0407547	HICKMANS EGG RANCH TONOPAH	AZ0413261	TRI-CITY PREP HIGH SCHOOL
AZ0407618	GW -BWC, INC- BUCKEYE RANCH	AZ0413263	INSCRIPTION CANYON WATER COMPANY
AZ0407621	MICHIGAN TRAILER PARK	AZ0413264	MANNEKEN APARTMENTS
AZ0407624	PIONEER RV RESORT	AZ0413267	BENT RIVER APT ENCHANTMENT RESORT
AZ0407632	THE MEADOWS OF WICKENBURG	AZ0413268	ON THE GREENS
AZ0407633	HOPEVILLE WATER SYSTEM	AZ0413277	DESERT STAR COMMUNITY SCHOOL
AZ0407635	R14 INVESTMENT PARTNERS LLC	AZ0413281	MINGUS MOUNTAIN ACADEMY

ADEQ's Statewide PFAS Sampling Program

Closeout Report



PWS #	PWS Name	PWS #	PWS Name
AZ0407639	REMUDA RANCH RIO AT THE MEADOWS	AZ0413283	SIERRA VERDE RANCH 2
AZ0407660	SHANGRI LA RANCH	AZ0413298	RETREAT AT OAK CREEK DWID
AZ0407670	SAGUARO ACRES CFD	AZ0413307	QUAIL RIDGE DWID
AZ0407671	PEEKABOO WATER COOP	AZ0413317	CACTUS MOBILE RANCH
AZ0407675	TEEN CHALLENGE INTERNATIONAL	AZ0413320	WINDY VALLEY PLAZA
AZ0407677	VALLEY VIEW WATER COMPANY	AZ0413322	AZ GAME FISH PAGE MAIN
AZ0407678	NADABURG SCHOOL DISTRICT	AZ0413330	RANCHO VIDA RV PARK
AZ0407682	ORANGEWOOD MOBILE HOME PARK	AZ0413338	ROAD RUNNER MHP
AZ0407683	NEW RIVER SCHOOL	AZ0413340	RAINBOW ACRES
AZ0407713	TRIPLE G DAIRY	AZ0413341	ARCOSANTI CAMP
AZ0407720	SADDLE MOUNTAIN DAIRY	AZ0413345	LHOIST N AM OF AZ - NELSON LIME PLANT
AZ0407732	VWC BUCKEYE DIV - SONORAN RIDGE	AZ0413348	GREEN VALLEY MHP
AZ0407733	GW -BWC, INC.- WPE #6	AZ0413351	BEAVER CREEK STORE
AZ0407736	BELMONT MOUNTAIN DAIRY	AZ0413358	WICKENBURG RANCH ESTATES
AZ0407740	APS REDHAWK WATER	AZ0413373	SUNSET MOBILE HOME PARK
AZ0407745	CANAM STEEL CORPORATION	AZ0413378	WHITE HILLS TRAILER PARK
AZ0407763	ARIZONA PROVING GROUND	AZ0413386	PHOENIX CEMENT COMPANY
AZ0407782	PHOENIX CITY OF SR85 LANDFILL	AZ0413391	TURQUOISE TRIANGLE RV PARK
AZ0407789	ROYAL PAPER, LLC	AZ0413408	BEVERLY GARDENS TRAILER PARK
AZ0407790	BUCKEYE ARMED FORCES RESERVE CENTER	AZ0413415	CLEAR CREEK MOBILE HOME
AZ0407791	HICKMANS EGG RANCH	AZ0413419	MOUNTAIN VIEW MHP
AZ0407792	HICKMANS FAMILY FARM	AZ0413423	C-OASIS PARK
AZ0407794	SOLANA POTABLE WATER SYSTEM	AZ0413425	RIO VERDE RV PARK
AZ0407795	CITY OF HOPE - PHOENIX	AZ0413431	CHINO VALLEY PARK
AZ0407900	SONTEL WATER COOP	AZ0413435	GILPINS TRAILER PARK
AZ0407902	SUPERIOR PRODUCTS OF AZ	AZ0413486	LOVES TRAVEL STOP NO 722
AZ0407903	GILBERT RIGG WELL COOP	AZ0413487	WHISPERING WINDS APARTMENTS

ADEQ's Statewide PFAS Sampling Program

Closeout Report



PWS #	PWS Name	PWS #	PWS Name
AZ0407911	FAITH FAMILY CHURCH	AZ0414001	ANTELOPE WATER COMPANY
AZ0408001	OATMAN WATER COMPANY	AZ0414003	DATELAND PUBLIC SERVICE CO
AZ0408003	FORT MOJAVE TRIBAL UTILITY AUTHORITY	AZ0414009	VALLEY VISTA WATER COMPANY
AZ0408005	CHLORIDE DWID	AZ0414014	SHEPARD WATER COMPANY
AZ0408006	BEAVER DAM WC SYSTEM 1	AZ0414018	TACNA WATER MANAGEMENT COMPANY
AZ0408014	HATCH VALLEY DWID	AZ0414022	WELLTON TOWN OF
AZ0408017	JOSHUA VALLEY UTILITY COMPANY	AZ0414030	MOHAWK UTILITY COMPANY
AZ0408021	LAGOON ESTATES WC UNIT 7	AZ0414037	CS GADSDEN WATER COMPANY
AZ0408026	HAVASU HEIGHTS DWID	AZ0414039	FISHERS LANDING RESORT
AZ0408035	FOOTHILLS UTILITIES KINGMAN EAST	AZ0414044	ANTELOPE UNION HIGH SCHOOL
AZ0408037	CAMP MOHAVE	AZ0414050	DATELAND ELEMENTARY SCHOOL
AZ0408039	CS WHITE HILLS WATER COMPANY UNITS 3 4 6	AZ0414055	MOHAWK VALLEY SCHOOL DISTRICT
AZ0408041	SO HI DWID	AZ0414065	CS GREEN ACRES WATER COMPANY
AZ0408042	YUCCA WATER ASSOCIATION	AZ0414070	JONES COOP WATER ASSOC
AZ0408043	LAKE MEAD CITY COMMUNITY COOP 2	AZ0414073	CS RANCHEROS BONITOS WATER COMPANY
AZ0408046	LAGOON ESTATES WC UNIT 2	AZ0414075	SUN LEISURE ESTATES UTILITIES COMPANY
AZ0408052	OWENS ELEMENTARY SCHOOL	AZ0414080	CS TIERRA MESA ESTATES WATER COMPANY
AZ0408057	BEAVER DAM FILLING STATION	AZ0414086	RIVER RV RANCH
AZ0408059	MT TIPTON WATER COMPANY	AZ0414098	SIERRA PACIFIC MOBILE MANOR
AZ0408062	LAKE MOHAVE HIGHLANDS	AZ0414103	YUMA DESALTING PROJECT
AZ0408064	SILVER CREEK RV PARK	AZ0414105	ORANGE GROVE ELEMENTARY SCHOOL
AZ0408066	SNOWBIRD RV PARK	AZ0414107	CS CITRUS PARK WATER COMPANY
AZ0408072	DS WATER COMPANY	AZ0414312	APS - YUCCA WATER
AZ0408074	EZ LIVIN RV PARK	AZ0414314	YUMA LAKES RESORT
AZ0408077	KINGMAN STOPPING CENTER	AZ0414322	LAGUNA MOBILE HOME AND RV PARK

ADEQ's Statewide PFAS Sampling Program

Closeout Report



PWS #	PWS Name	PWS #	PWS Name
AZ0408078	WALNUT CREEK WATER COMPANY	AZ0414391	YUMA WEST MHP
AZ0408080	SUN SHINERS MHP	AZ0414432	MOUNTAIN VIEW MOBILE VILLAGE
AZ0408082	RANCH WATER SERVICE INC	AZ0414442	CS EL PRADO WATER COMPANY
AZ0408089	CHIEF SLEEP EASY TP	AZ0414463	G & L MOBILE PARK
AZ0408090	CENTENNIAL PARK DWID	AZ0414513	GOWAN MILLING LLC
AZ0408091	GATLIN WATER COMPANY IWX	AZ0415002	CIENEGA WATER COMPANY INC
AZ0408093	BEAVER DAM WC SYSTEM 2	AZ0415006	EPCOR - MOOVALYA KEYS
AZ0408127	BEAVER DAM EAST DWID	AZ0415008	HAVASU SPRINGS RESORT
AZ0408129	EPCOR - WILLOW VALLEY/LAKE CIMARRON	AZ0415010	EPCOR - LAKESIDE
AZ0408137	DESERT FOOTHILLS	AZ0415011	EPCOR - MARINA VILLAGE
AZ0408138	BIASI WATER COMPANY	AZ0415021	SALOME WATER COMPANY
AZ0408142	VIRGIN MOUNTAIN ESTATES MHP	AZ0415023	WENDEN DWID
AZ0408148	LITTLEFIELD UNIFIED SCHOOL DISTRICT 9	AZ0415026	HILLCREST WATER COMPANY
AZ0408149	CS WHITE HILLS WATER COMPANY UNIT 1	AZ0415027	EPCOR - PARKER DAM
AZ0408150	GHR LANDOWNERS ASSN WATER COOP	AZ0415029	CS HARRISBURG UTILITY COMPANY
AZ0408154	140 INDUSTRIAL DWID WATER SYSTEM	AZ0415038	BOUSE DWID
AZ0408163	EPCOR - ARIZONA GATEWAY	AZ0415040	EPCOR - RIO LINDO
AZ0408164	SILVERVIEW RV PARK	AZ0415058	EPCOR - HOLIDAY HARBOR
AZ0408165	LOVES TRAVEL STOP #272	AZ0415096	CS Q MOUNTAIN WATER COMPANY
AZ0408169	BLU WATER COMPANY	AZ0415098	LOVES COUNTRY STORE INC
AZ0408173	VIRGIN MOUNTAIN UTILITIES COMPANY	AZ0415115	BOUSE ELEMENTARY SCHOOL
AZ0408176	LAKE MEAD CITY COMM COOP 1	AZ0415120	PARKER SOUTH
AZ0408177	BEAVER DAM WC SYSTEM 3	AZ0415122	DESERT SKY DWID
AZ0408178	DOUBLE R WATER DISTRIBUTORS, INC.	AZ0415123	CIBOLA MUTUAL WATER COMPANY
AZ0408188	SCENIC VALLEY HOLDING COMPANY	AZ0415346	QUARTZSITE TOWN OF

ADEQ's Statewide PFAS Sampling Program

Closeout Report



PWS #	PWS Name	PWS #	PWS Name
AZ0408191	RIVERBOUND CUSTOM STORAGE AND RV PARK	AZ0415497	EHRENBERG IMPROVEMENT DISTRICT
AZ0408316	ARIZONA PROVING GROUND	AZ0415801	VICKSBURG FARM
AZ0408341	FOOTHILLS UTILITIES KINGMAN WEST	AZ0420005	ASARCO MISSION UNIT
AZ0408342	HARDYVILLE ON THE RIVER	AZ0420006	SILVER BELL MINING, L.L.C.
AZ0408351	JOSHUA TREE WATER COMPANY	AZ0420011	CALPORTLAND - RILLITO CEMENT PLANT
AZ0408701	KATHERINE LANDING DWTP	AZ0420019	CAMPBELL ESTATES MHP
AZ0409000	NAVAJO WATER - LAGUNA ESTATES	AZ0420026	CRESCENT MANOR MHP
AZ0409001	SUN VALLEY UTILITIES	AZ0420033	DESERT SHORES RV MHP
AZ0409005	TIMBERLAND ACRES DWID	AZ0420042	FAR HORIZONS MHP
AZ0409009	CLAY SPRINGS DWID	AZ0420043	NORTH LA CHOLLA MHP
AZ0409013	PORTER CREEK DWID	AZ0420092	SIERRA COURT TRAILER PARK
AZ0409014	HEBER DWID	AZ0420096	CROSSROADS PARK MHP
AZ0409016	JOSEPH CITY DWID	AZ0420109	TOWN COUNTRY MHP
AZ0409017	RETAW WATER COMPANY	AZ0420159	ORCHARD VALLEY MOBILE HOME PARK
AZ0409021	PINETOP WATER COMMUNITY FACILITIES DIST	AZ0420175	LOS ARBOLES MOBILE HOME PARK
AZ0409024	PORTER MOUNTAIN DWID	AZ0420176	LAZY ACRES MHP
AZ0409028	SKY HI DWID	AZ0420197	CACTUS COUNTRY RV RESORT
AZ0409030	NAVAJO WATER - SUMMER PINES	AZ0420205	RANCHWOOD COMMUNITY
AZ0409031	TOWN OF TAYLOR	AZ0420213	TUCSON MEDICAL CENTER
AZ0409032	A PETERSEN WATER COMPANY	AZ0420325	MARANA ESTES SCHOOL
AZ0409034	VOYAGER AT WHITE MOUNTAIN LAKES WC	AZ0420336	VAIL SCHOOL DISTRICT - ELEMENTARY SCHOOL
AZ0409036	WHITE MOUNTAIN SUMMER HOMES DWID	AZ0420368	GREENFIELDS COUNTRY DAY SCHOOL
AZ0409039	NAVAJO WATER - CHAPARRAL PINES	AZ0420419	SANTA RITA HEIGHTS MHP
AZ0409040	PINEDALE ESTATES DWID	AZ0420420	VIA VERDE WEST MHP
AZ0409041	PINEDALE DWID	AZ0420439	VISTA DEL NORTE MHP
AZ0409046	HOLBROOK SDA INDIAN SCHOOL	AZ0420443	FAR HORIZONS EAST MHP

ADEQ's Statewide PFAS Sampling Program

Closeout Report



PWS #	PWS Name	PWS #	PWS Name
AZ0409049	WATCO WATER	AZ0420445	VILLA CAPRI MHP
AZ0409050	WOODRUFF DOMESTIC WATER COMPANY INC	AZ0420447	TUCSON READY MIX ORANGE GROVE
AZ0409052	NAVAJO COUNTY GOVERNMENT COMPLEX	AZ0420472	TANQUE VERDE GUEST RANCH
AZ0409060	WONDERLAND ACRES DWID	AZ0420475	CORONADO FOREST DRIVE WATER COOP
AZ0409074	AMERICAN INDIAN CHRISTIAN MISSION	AZ0420478	SILVER CHOLLA MHP
AZ0409075	MISTY MOUNTAIN DWID	AZ0420487	RIO VISTA MOBILE HOME PARK
AZ0409086	SWEETWATER RANCH - TOWN OF TAYLOR	AZ0420490	CAMPBELL AVENUE FARMS
AZ0409089	YOSEMITE MEATS	AZ0420500	CATALINA COUNTRY ESTATES
AZ0409090	MOUNTAIN GLEN WATER SERVICE LINDEN TRAILS	AZ0420505	MARANA HIGH SCHOOL
AZ0409091	CANYON VISTA ESTATES	AZ0420529	CAROLANNE DRIVE HOA
AZ0409096	NAVAJO COUNTY PUBLIC WORKS COMPLEX	AZ0420531	CASITAS DE CASTILIAN
AZ0409300	TIMBERLINE MHP	AZ0420542	DIAMOND GROVE MOBILE HOME ESTATES
AZ0409305	BUCKSKIN ARTISTS COMMUNITY	AZ0420546	DESERT PARADISE MHP LLC
AZ0409308	AZ PUBLIC SERVICE CO CHOLLA WATER	AZ0420575	CAMMIES FOOTHILLS VISTA MHC
AZ0409311	COUNTRY LANE TRAILER PARK	AZ0420595	SUMMIT WATER COOP
AZ0409316	APACHE ACRES MHP	AZ0420598	DEEP WELL COOP
AZ0409329	CS HIGH COUNTRY PINES WATER COMPANY	AZ0420600	PITA WATER COMPANY
AZ0409330	WHITE MOUNTAIN WATER COMPANY	AZ0420602	RINCON COUNTRY EAST RV
AZ0409343	HEBER DWID - BLACK CANYON SUBDIVISION	AZ0420606	LA CASITA WATER COMPANY 3
AZ0410001	AJO IMPROVEMENT COMPANY	AZ0420612	SAINT PHILLIPS PLAZA
AZ0410002	ARIVACA TOWNSITE WATER COOP	AZ0420613	HOT ROD WATER
AZ0410003	ARIZONA WATER CO - AJO	AZ0420801	CACTUS-STELLAR LIMITED

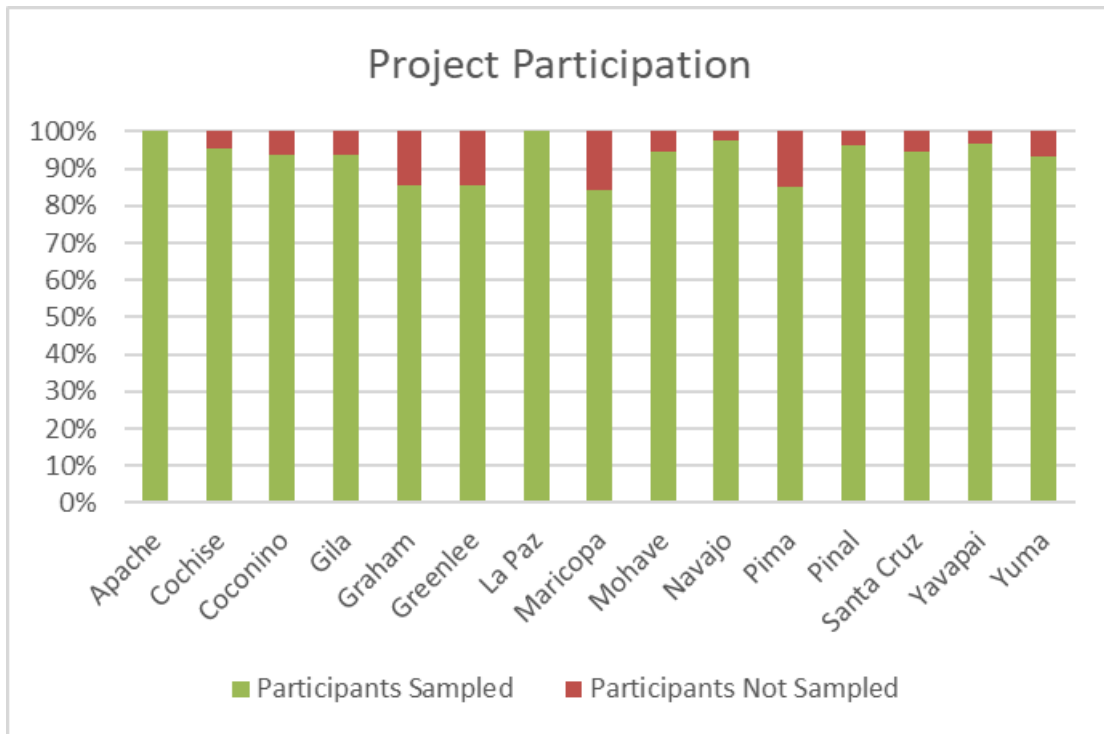


C. Table of Project Participation Type by County

County	# of Project Participants	Number of Participants Sampled	Number of Participants Not Sampled
Apache	17	17	0
Cochise	66	63	3
Coconino	32	30	2
Gila	48	45	3
Graham	7	6	1
Greenlee	7	6	1
La Paz	22	22	0
Maricopa	102	86	16
Mohave	55	52	3
Navajo	39	38	1
Pima	135	115	20
Pinal	53	51	2
Santa Cruz	19	18	1
Yavapai	120	116	4
Yuma	30	28	2
TOTAL	752	693	59



D. Stacked Bar Chart of Project Participation



E. Table of PFAS Detection Type by County

County	Not Detected	Below MCL	Above MCL	Not Sampled	Total
Apache	16	1	0	0	17
Cochise	58	2	3	3	66
Coconino	28	1	1	2	32
Gila	24	8	13	3	48
Graham	6	0	0	1	7
Greenlee	6	0	0	1	7
La Paz	20	0	2	0	22
Maricopa	74	7	5	16	102
Mohave	49	0	3	3	55
Navajo	35	2	1	1	39

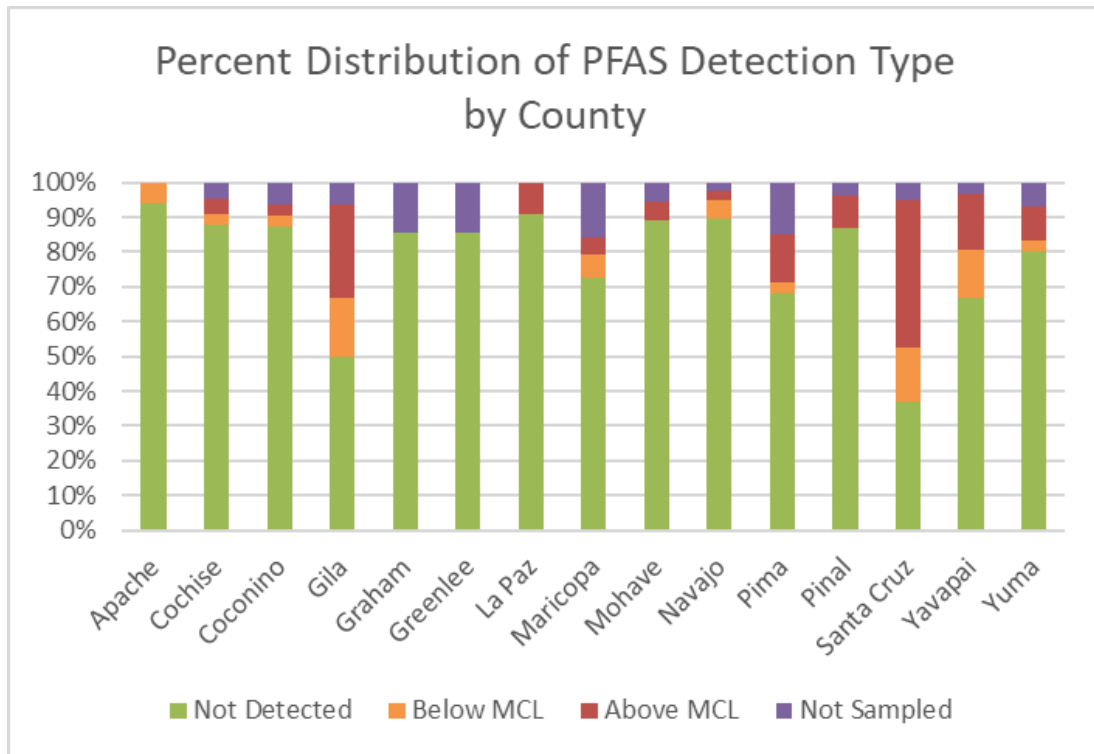
ADEQ's Statewide PFAS Sampling Program

Closeout Report



Pima	92	4	19	20	135
Pinal	46	0	5	2	53
Santa Cruz	7	3	8	1	19
Yavapai	80	17	19	4	120
Yuma	24	1	3	2	30
Total	565	46	82	59	752

F. Stacked Bar Chart of Percent Distribution of PFAS Detection Type by County



G. Table of PFAS Detection Type by County of Systems Sampled

County	Not Detected	Below MCL	Above MCL	Total Sampled
Apache	16	1	0	17
Cochise	58	2	3	63
Coconino	28	1	1	30

ADEQ's Statewide PFAS Sampling Program Closeout Report



Gila	24	8	13	45
Graham	6	0	0	6
Greenlee	6	0	0	6
La Paz	20	0	2	22
Maricopa	74	7	5	86
Mohave	49	0	3	52
Navajo	35	2	1	38
Pima	92	4	19	115
Pinal	46	0	5	51
Santa Cruz	7	3	8	18
Yavapai	80	17	19	116
Yuma	24	1	3	28
Total	565	46	82	693

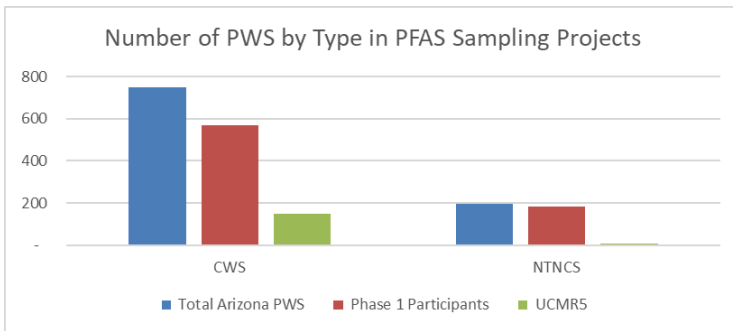
H. Table of Number of PWS by Type in PFAS Sampling Projects

PWS Type	Total Arizona PWS	UCMR5	Phase 1 - PWS
CWS	749	149	568
NTNCWS	196	6	184
Subtotal (Regulated by PFAS Rule)	945	155	752
TNCS (Not Regulated)	563	-	-
Total	1,508	155	752

ADEQ's Statewide PFAS Sampling Program Closeout Report



I. Bar Chart of Number of PWS by Type in PFAS Sampling Projects

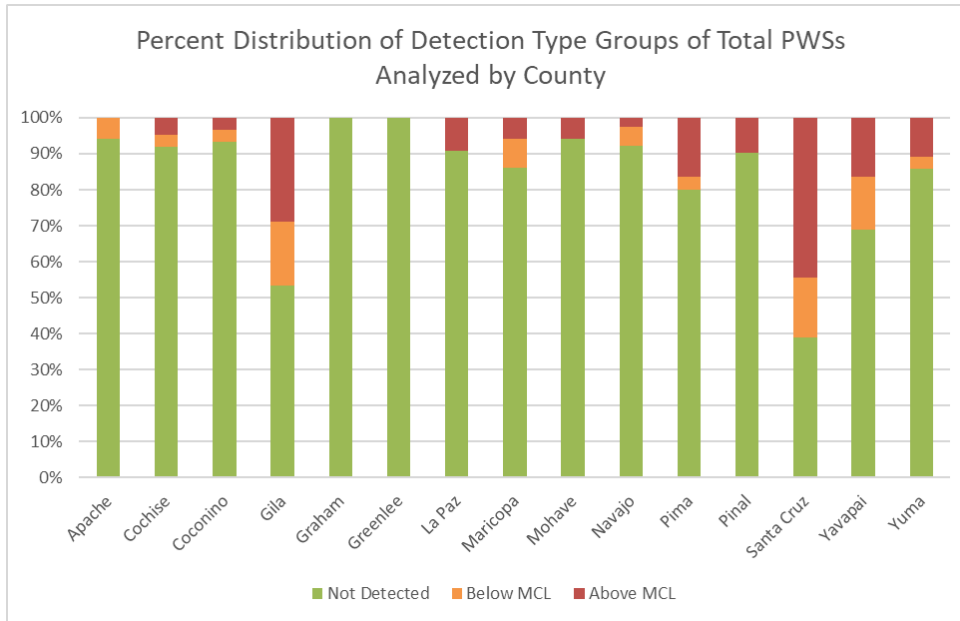


J. Table of Percentage of Detection Type Groups of Total PWS Analyzed by County

County	Total Analyzed	% Not Detected of Analyzed	% Below MCL of Analyzed	% Above MCL of Analyzed
Apache	17	94%	6%	0%
Cochise	63	92%	3%	5%
Coconino	30	93%	3%	3%
Gila	45	53%	18%	29%
Graham	6	100%	0%	0%
Greenlee	6	100%	0%	0%
La Paz	22	91%	0%	9%
Maricopa	86	86%	8%	6%
Mohave	52	94%	0%	6%
Navajo	38	92%	5%	3%
Pima	115	80%	3%	17%
Pinal	51	90%	0%	10%
Santa Cruz	18	39%	17%	44%
Yavapai	116	69%	15%	16%
Yuma	28	86%	4%	11%



K. Stacked Percent Bar Chart of Detection Type Groups of Total PWS Analyzed by County



L. Table of PFAS Above MCL Detections by EPA Method

PFAS MCL	EPA Method 533 Above MCL Detections	EPA Method 537.1 version 2 Above MCL Detections
PFOA	52	53
PFOS	50	49
PFHXS	17	20
PFNA	0	0
GEN-X	0	0
Hazard Index	18	17
Total	137	139