

Monitoring Assistance Program Funding and Future

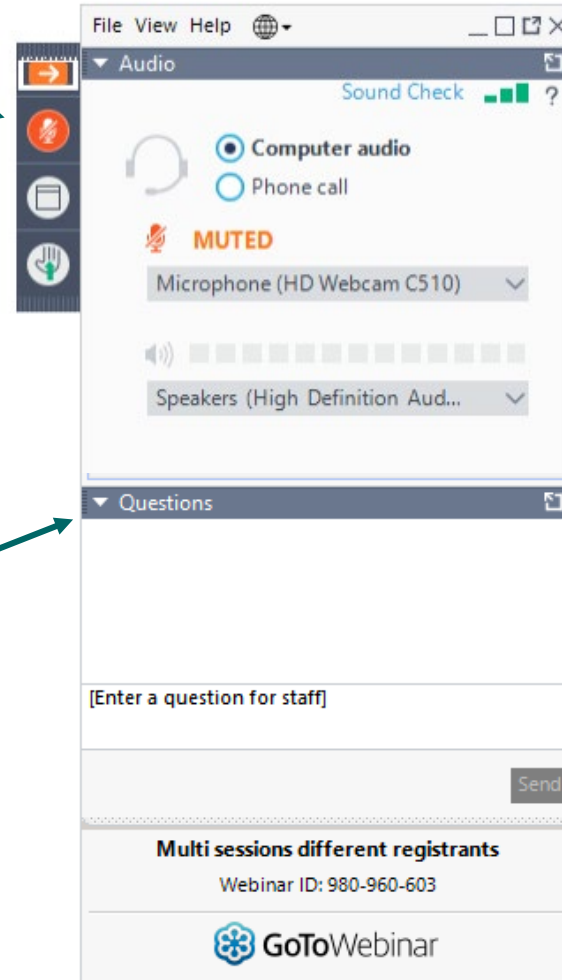
Laura Carusona, Drinking Water Section Manager

Carling Olson, MAP Coordinator

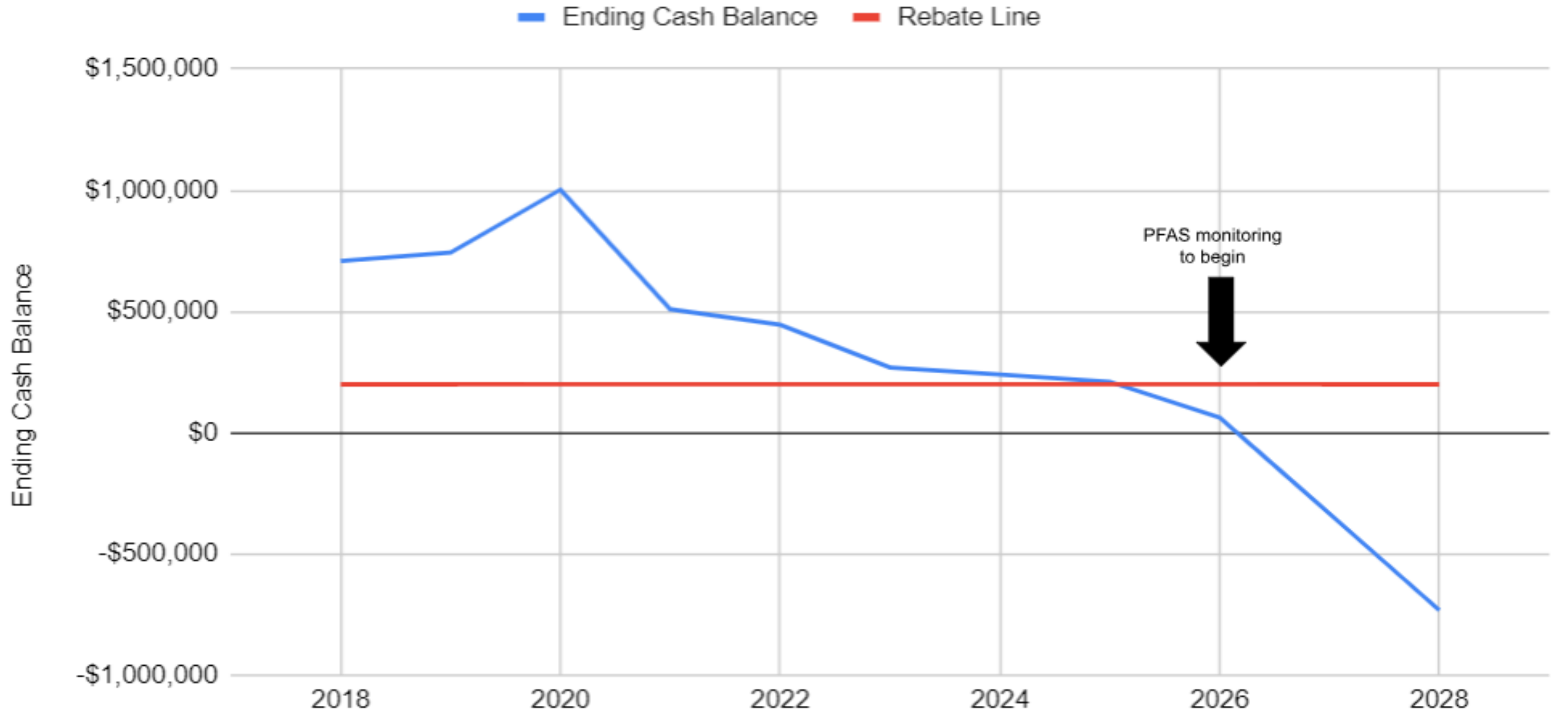
February 20, 2024



- Muted
- Not Recording Today
- Use the Question Tool



Why are we here?



Why fund MAP?

Provides **water quality data** to track potential public health or operational issues.

Economies of scale for small public water systems - **cheaper** than market rates.

Managed program to support smaller public water systems with limited capacity.

Public health is strengthened through this program, as evident by the compliance rates between systems who participate in the program and those who do not.



To continue provide a monitoring program that assists small public water systems in complying with monitoring requirements under the Federal Safe Drinking Water Act.



Statutory Changes (HB 2628)

- Increase \$200K threshold for mandatory return of funds to future annual fees.
- Add allowance to sample for triggered increased monitoring samples at the entry point to the distribution system (EPDS)

Rule Changes

- Increase fees by inflation, **only**; 78.8% increase
- Incorporate an annual CPI increase, *if needed*
- Authority to invoice for increased monitoring
- Add PFAS to sampling list



- **Annual base fee**
 - from \$250 to \$447
- **Annual service connection charge**
 - from \$2.57 to \$4.60

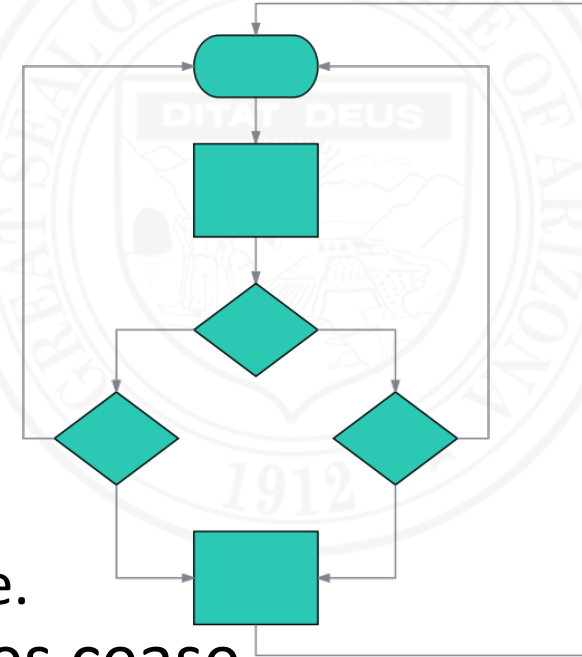


Triggered Monitoring

- **Only those systems that need sampling will be billed**

Anticipated Process:

1. System triggers into increased quarterly monitoring
2. MAP coordinator offers assistance in sampling
 - a. MAP takes quarterly samples,
 - b. System gets quarterly invoice,
 - c. MAP coordinator will work to reduce schedule when appropriate.
3. System returns to routine monitoring and quarterly invoices cease



If you never need increased quarterly monitoring, this process will not apply to your system!

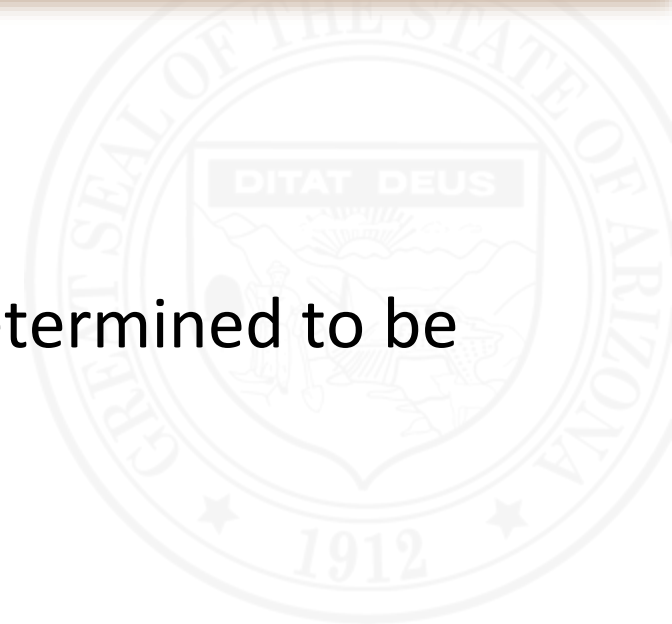
Triggered quarterly vs. Treatment quarterly

Triggered Quarterly

- System receives detect results above trigger level
- Requires increased quarterly until water quality is determined to be reliably and consistently below the MCL.
- **MAP's new process will cover these samples!**

Quarterly monitoring due to treatment

- Once a treatment plant is permitted and installed, quarterly monitoring is required for contaminant of concern
- Requires quarterly monitoring for the life of the treatment plant
- **MAP will NOT cover these samples**



Triggered monitoring cost to systems

- Increased quarterly monitoring fee calculation
 - *Contractor's price + Sampling trip fee + administrative fee*

<u>Analyte</u>	<u>Quarterly additional Invoice</u>
Arsenic	\$195.00
Nitrate	\$192.00
Fluoride	\$195.00
Selenium	\$195.00
Volatile Organic Chemicals (VOCs)	\$250.00
Di(2-ethylhexyl) phthalate	\$380.00
Dioxin	\$405.00
Uranium	\$230.00
PFAS	\$730.00



Next Steps/Timeline

NFRM and GRRC Approval
4th Qtr 2024



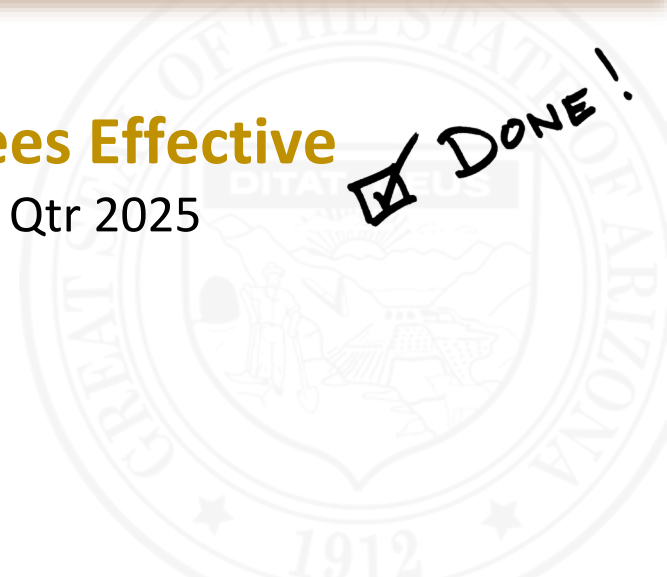
Stakeholder Informational Meetings
July 2023-Feb 2024



New Fees Effective
1st Qtr 2025

DONE!

Draft Rule Language
August 2024





Discussion



Carling Olson, MAP Coordinator
602-771-4518
MAP@azdeq.gov