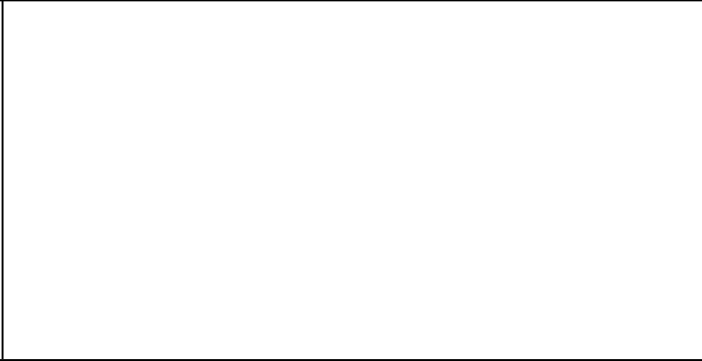
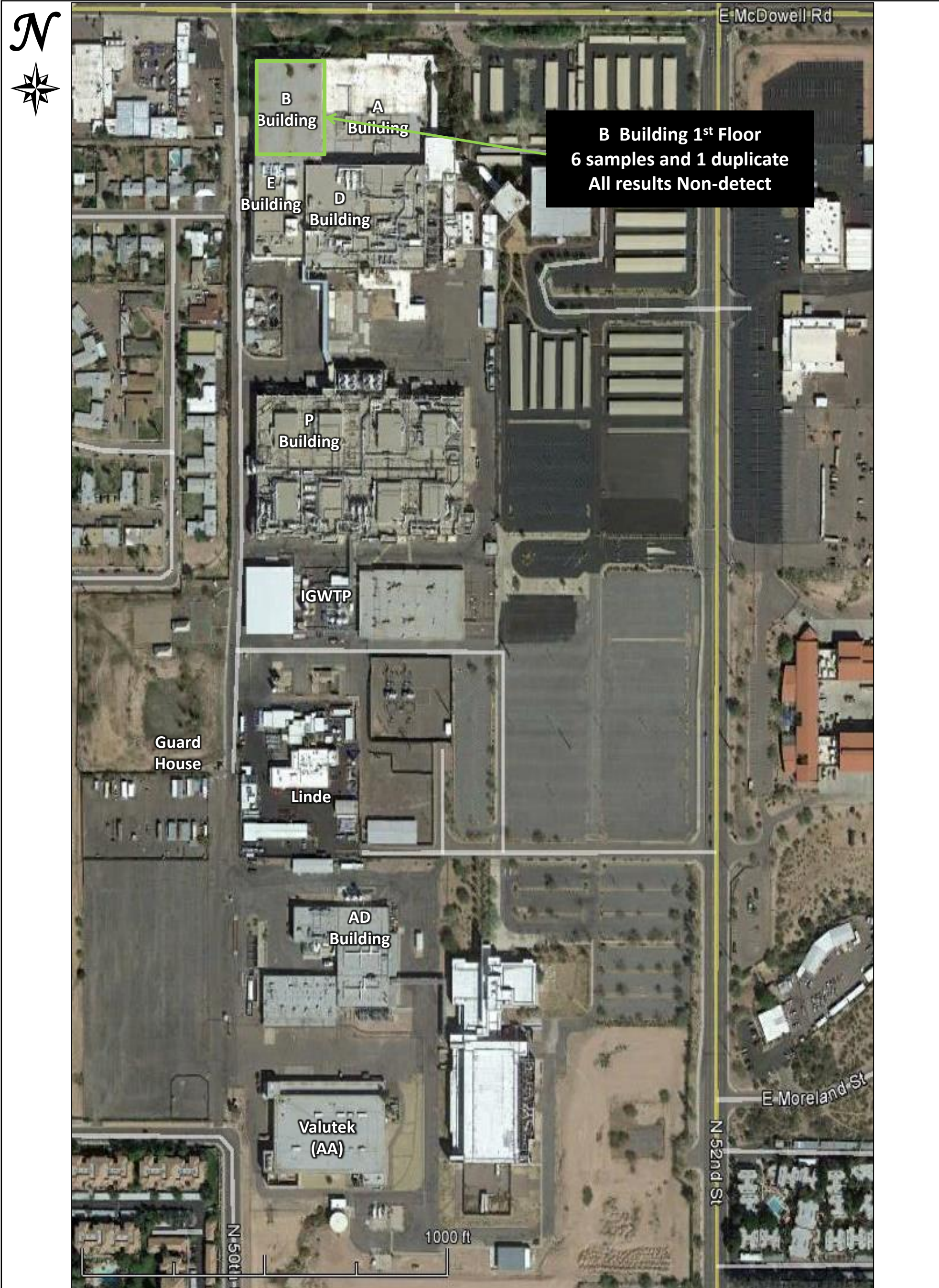


Approximate Scale

**Indoor Air Results**  
Vapor Intrusion Investigation  
Former Motorola 52nd Street Facility  
July 2016







Approximate Scale

<div data-bbox="151 2719 816 2937"><p><b>Indoor Air Results</b> Vapor Intrusion Investigation Former Motorola 52nd Street Facility July 2016</p></div>		<div data-bbox="1612 2781 1925 2937"><p><b>CLEAR CREEK ASSOCIATES</b></p></div>
--	--	---





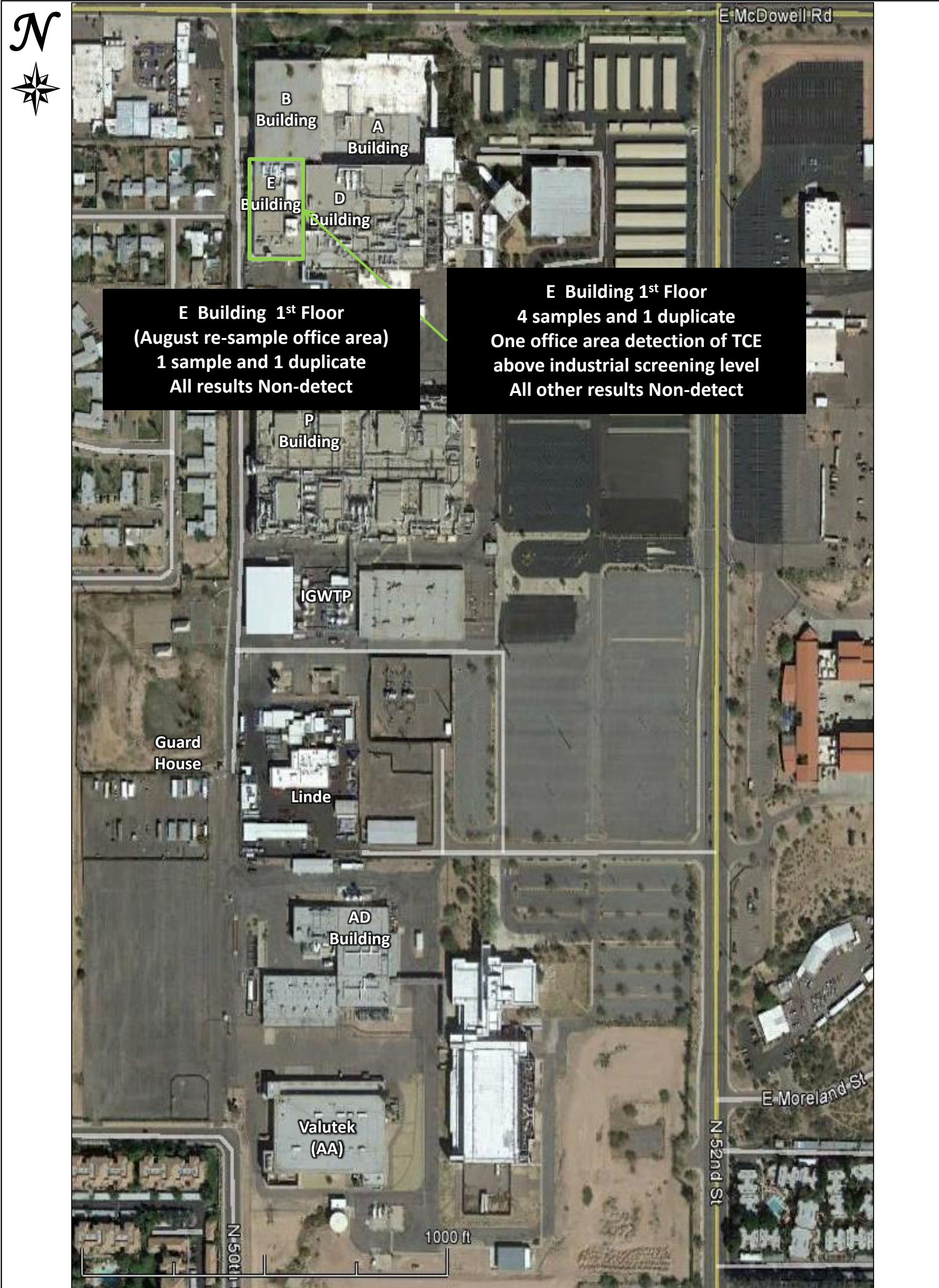
**D Building 1<sup>st</sup> Floor**  
3 samples  
1 detection of 1,1,1,-TCA below industrial screening level  
All other results Non-detect

**D Building Basement**  
(August re-sample stock room)  
1 sample  
All results Non-detect

**D Building Basement**  
(July event)  
15 samples and 1 duplicate  
One (stock room) detection of TCE above industrial screening level in sample. One (storage room) detection of PCE below industrial screening level.  
All other results in D Basement Non-detect

Approximate Scale



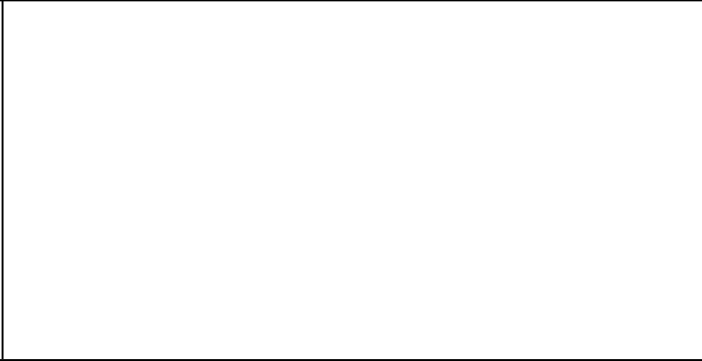


**E Building 1<sup>st</sup> Floor  
(August re-sample office area)  
1 sample and 1 duplicate  
All results Non-detect**

**E Building 1<sup>st</sup> Floor  
4 samples and 1 duplicate  
One office area detection of TCE  
above industrial screening level  
All other results Non-detect**

Approximate Scale

**Indoor Air Results**  
Vapor Intrusion Investigation  
Former Motorola 52nd Street Facility  
July-August 2016







Approximate Scale

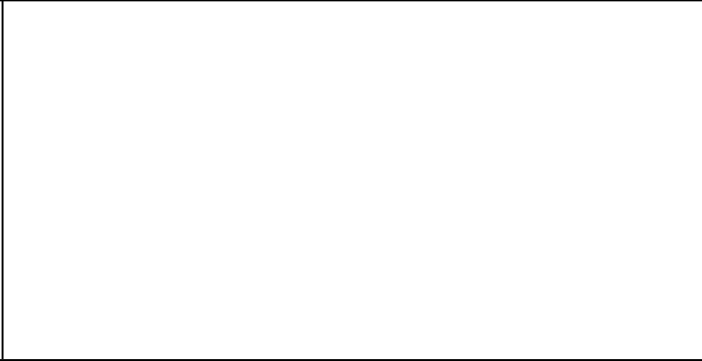
<div data-bbox="151 2719 816 2937"><p><b>Indoor Air Results</b> Vapor Intrusion Investigation Former Motorola 52nd Street Facility July 2016</p></div>		<div data-bbox="1612 2781 1925 2937"><p><b>CLEAR CREEK ASSOCIATES</b></p></div>
--	--	---





Approximate Scale

**Indoor Air Results**  
Vapor Intrusion Investigation  
Former Motorola 52nd Street Facility  
July 2016







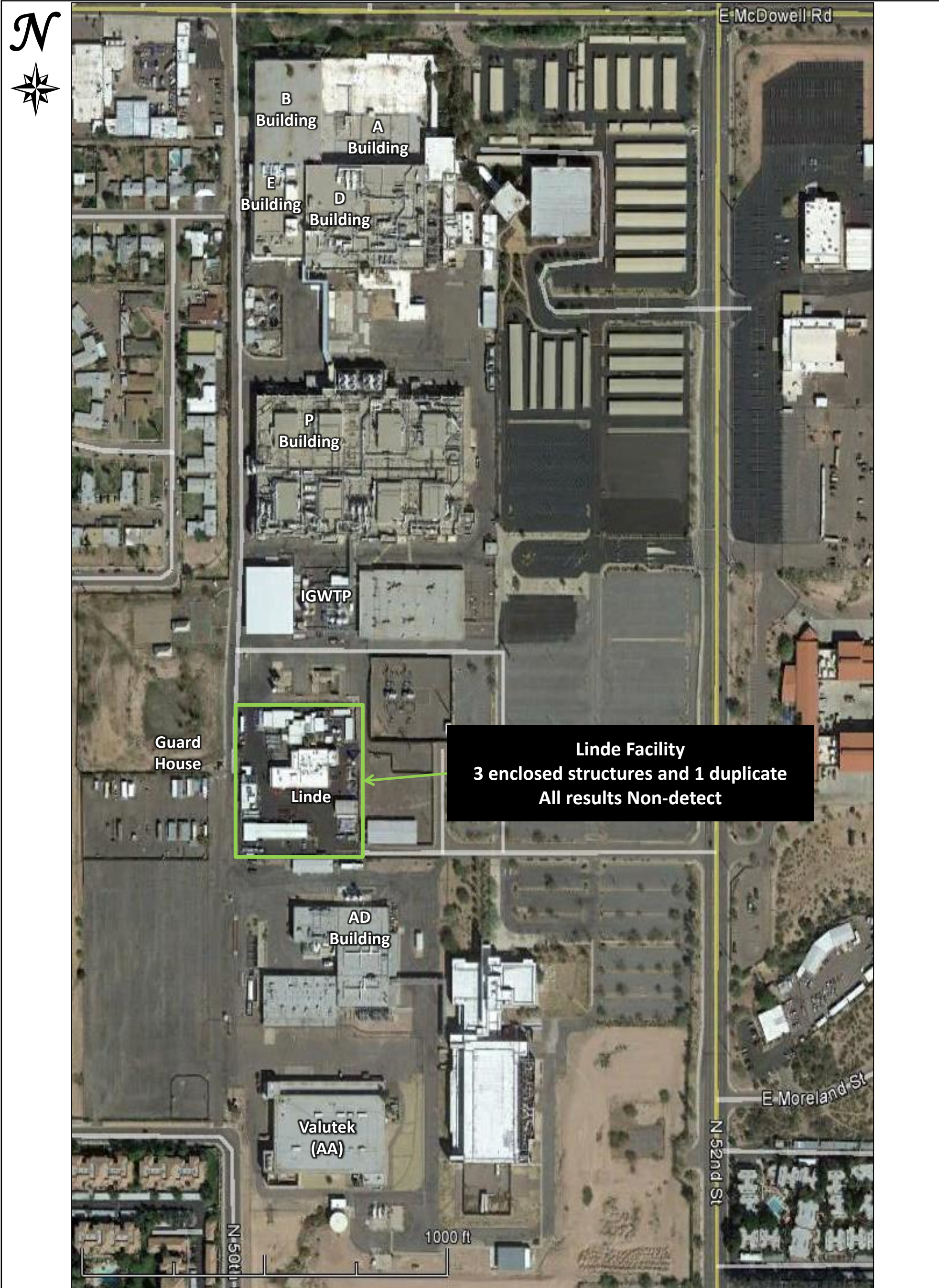
Approximate Scale

**Indoor Air Results**


Vapor Intrusion Investigation  
Former Motorola 52nd Street Facility  
July 2016







Approximate Scale

<p><b>Indoor Air Results</b> Vapor Intrusion Investigation Former Motorola 52nd Street Facility July 2016</p>		<p><b>CLEAR CREEK ASSOCIATES</b></p> 
---	--	--



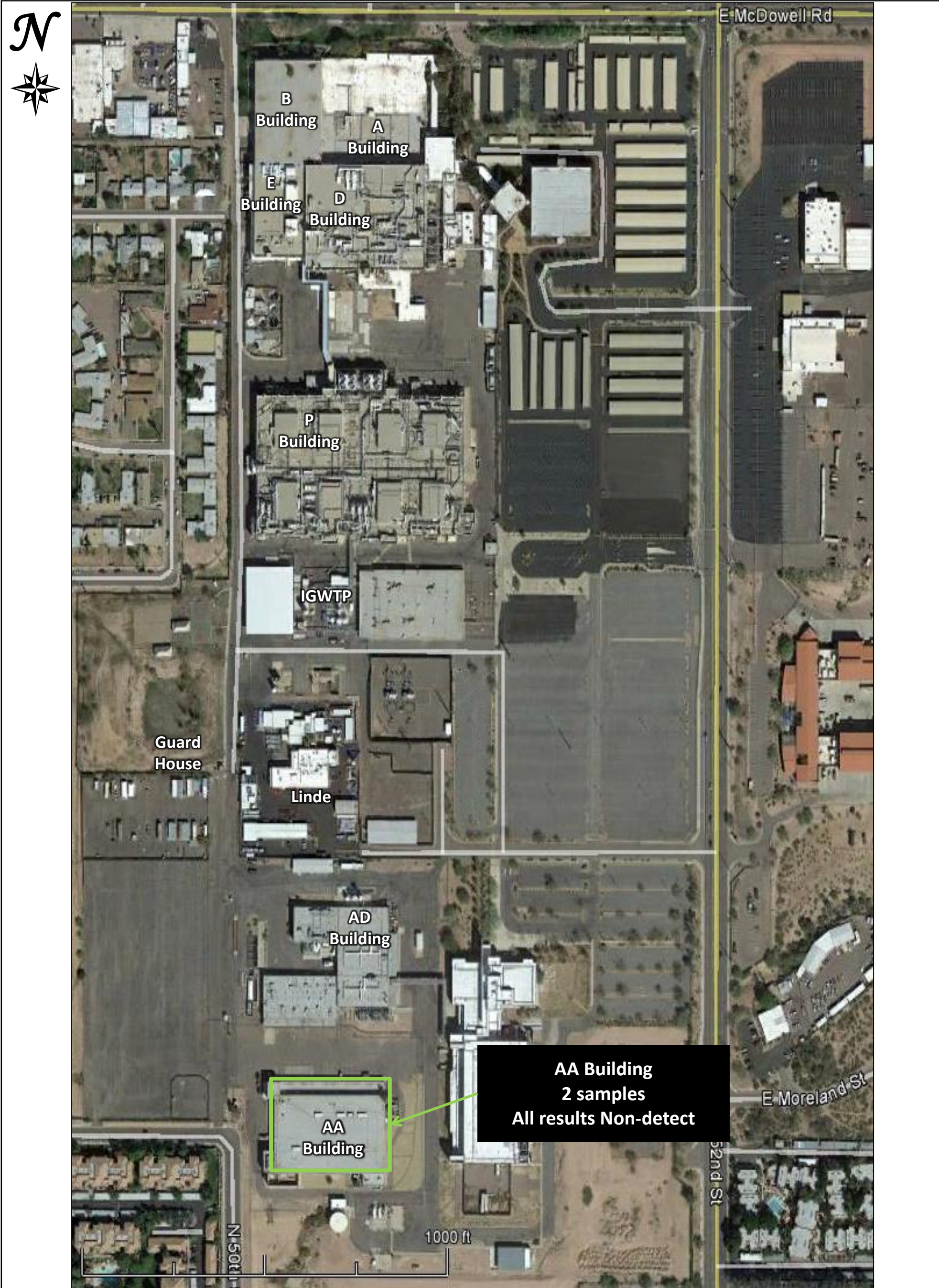


Approximate Scale

**Indoor Air Results**  
Vapor Intrusion Investigation  
Former Motorola 52nd Street Facility  
July 2016







Approximate Scale

**Indoor Air Results**  
Vapor Intrusion Investigation  
Former Motorola 52nd Street Facility  
July 2016

