

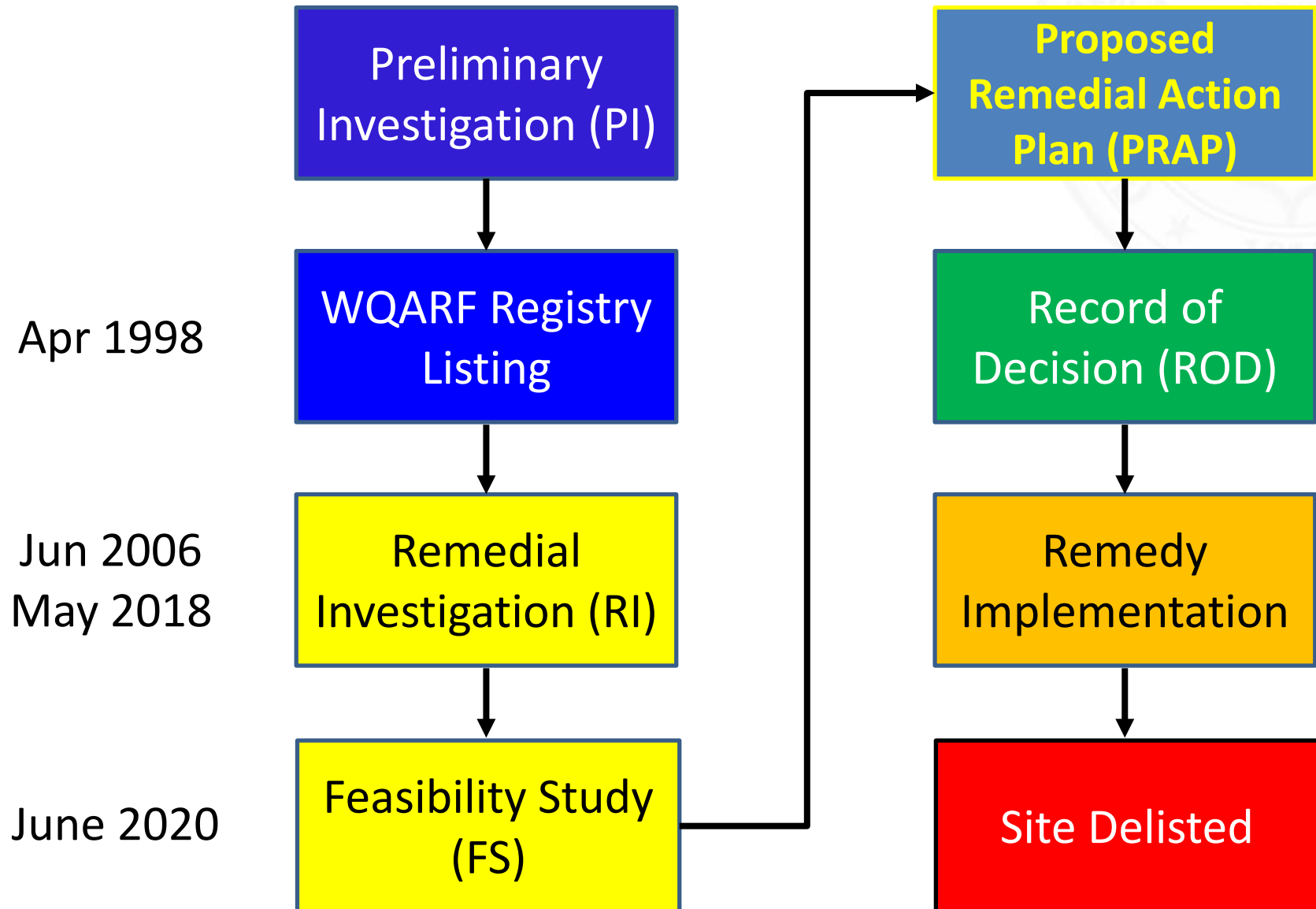
Project Update

WCP – East Grand Avenue WQARF Site

Tom Titus
Public Meeting
October 15, 2020

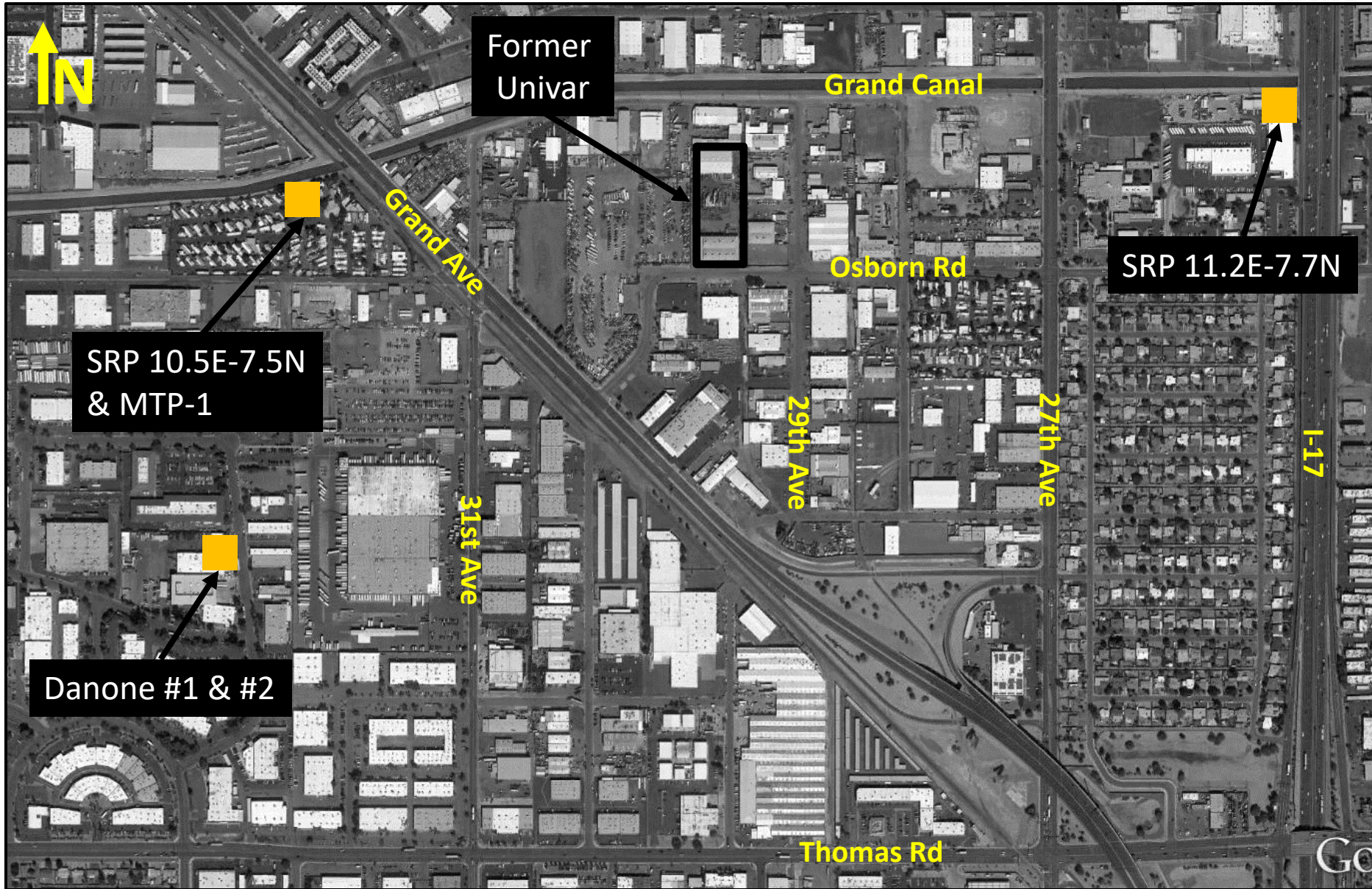


WQARF Process

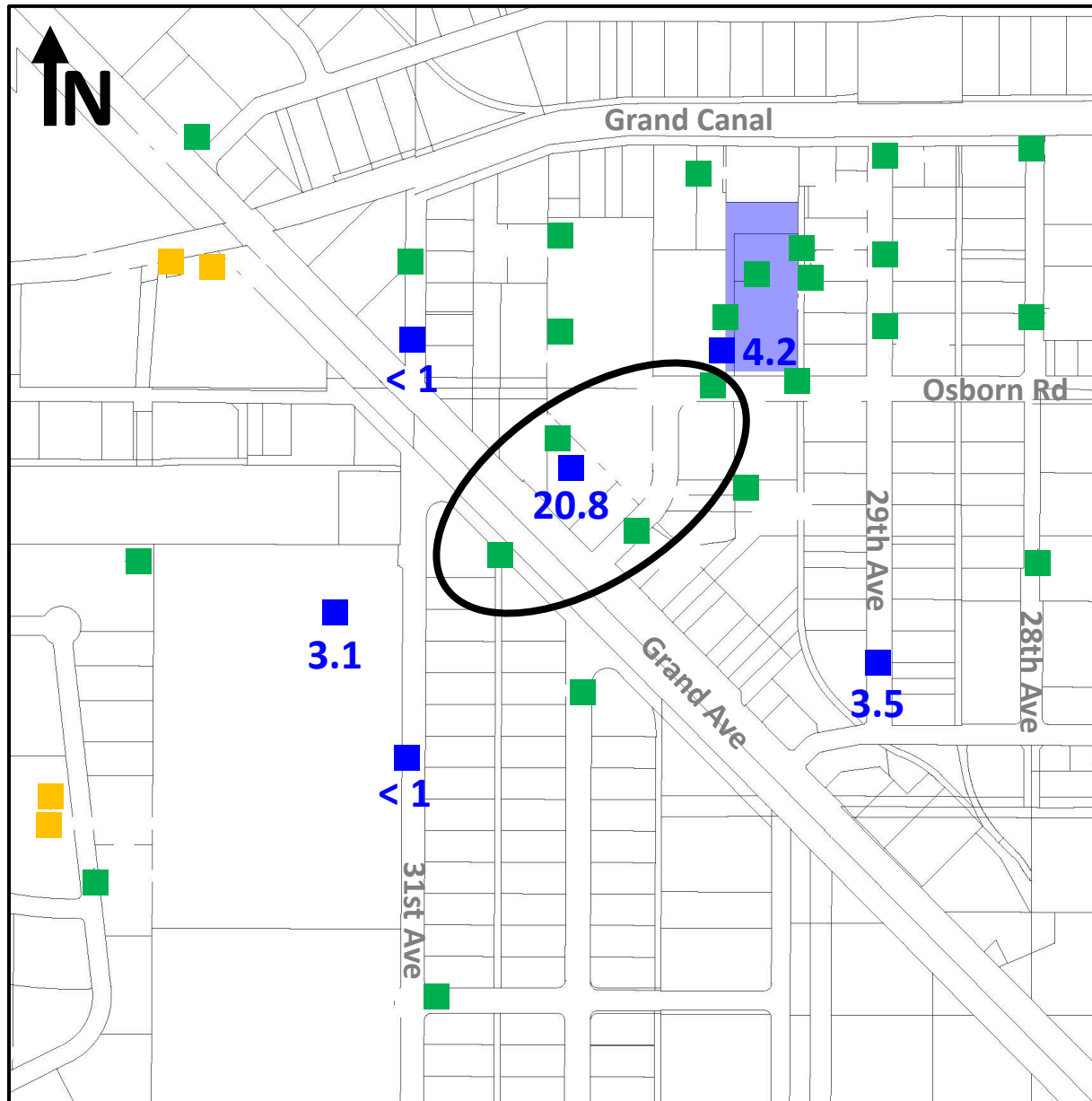


- Contaminants of Concern = Trichloroethene (TCE), Tetrachloroethene (PCE), & 1,1-Dichloroethene (1,1-DCE)
- Source of Contamination = Spills & Leaks at Former Univar Facility
- Current Impacted Media = Groundwater (Soil Contamination Was Previously Remediated with Soil Vapor Extraction)
- Potential Receptors = Down-Gradient Water Supply Wells

Site Detail Map



Groundwater (GW) Plume (January 2020)



- Monitoring Well Sampled
- Monitoring Well Not Sampled
- Production Well Not Sampled
- Plume Boundary
- 3.1 TCE Concentration (ppb)

January 2020

TCE = <1 to 20.8 ppb

PCE = <1 to 8.1 ppb

1,1-DCE = <1 to 11.9 ppb

GW Depth = 150 ft bgs

GW Flow Direction = North to Northwest

- Evaluate Remedial Technologies
- Develop Three Remedial Alternatives
 - Reference Remedy
 - Less Aggressive Remedy
 - More Aggressive Remedy
- Recommend a Remedial Alternative for the Site



- Monitored Natural Attenuation (MNA)
- Air Sparging
- In-Situ Groundwater Treatment
 - Enhanced Reductive Dechlorination (ERD)
 - Chemical Oxidation (ISCO)
 - Zero Valent Iron (ZVI)
- Groundwater Pump & Treat (with Various Treatment Technologies)
- Wellhead Treatment (Contingency)

Alternative	Duration (Years)	Cost
<u>Reference</u> = MNA (Semi-Annual Monitoring) with Wellhead Contingency	18	\$2.1M
<u>Less Aggressive</u> = MNA (Annual Monitoring) with Wellhead Contingency	18	\$1.8M
<u>More Aggressive</u> = Pump & Treat and MNA with Wellhead Contingency	13	\$7.0M

Less Aggressive Remedy

- MNA
 - 10 Monitoring Wells
 - Annual Monitoring & Sampling
 - Annual Reporting
- Wellhead Treatment (Contingency) of Area Production Well If Use Becomes Impacted Due to Site Contamination

- Proposed Remedial Action Plan (PRAP)
 - Will Propose Less Aggressive Alternative
 - 90-Day Public Comment Period
- Continue Groundwater Monitoring & Sampling
- Record of Decision (ROD)

Contact Information:

ADEQ Community Involvement Coordinator

Mary McGillicuddy

McGillicuddy.Mary@azdeq.gov

602.771.2336

ADEQ Project Manager

Tom Titus

Titus.Thomas@azdeq.gov

602.771.0102