

Meeting Minutes

West Central Phoenix (WCP) Water Quality Assurance Revolving Fund (WQARF) Sites Community Advisory Board (CAB) Meeting

Thursday, October 22, 2009

6:00 p.m.

Arizona Department of Environmental Quality
1110 W. Washington Street, Room 145
Phoenix, Arizona 85007

DRAFT MINUTES

Ref: OU #10-052

CAB members present: Donn Stoltzfus, Paul Holzer, and Barbara Keene

ADEQ Staff in attendance: André Chiaradia, Project Manager; Jennifer Thies, Remedial Projects Unit Manager; and Delfina Olivarez, Community Involvement Coordinator

Members of the public present: Gail Clement; Dennis Shirley; and Denny Hipsher

The following matters were discussed, considered, and decided upon at the meeting:

1. Call to Order/Introductions

Mr. Stoltzfus, the CAB Co-chair, opened the meeting at 6:00 p.m. with greetings and introductions.

2. Acceptance and/or Changes to the October 14, 2008 and the April 16, 2009 minutes

After introductions, Mr. Stoltzfus stated that a quorum was not met at this meeting. Therefore, business decisions could not be made.

3. Update on WCP WQARF Sites

A PowerPoint presentation updating activities at the WCP WQARF sites with emphasis on the soil vapor extraction (SVE) treatment systems at the Hills Brothers Chemical Company and at the F&B facility; project activities at the East Grand Avenue Site and the West Osborn Complex Site; and also the completion of the Land and Water Use Survey for North Canal was given by Mr. Chiaradia.

See presentation below

4. Distribution of Updated Community Involvement Plan (CIP)

Ms. Olivarez passed around a bound hard copy of the 2009 WCP CIP, so everyone at the meeting could take a look at it. Ms. Olivarez informed the public they could order a copy if they wanted through ADEQ's Records Management Department for the fee of printing. Each CAB member got their copy on a disk along with the 2009 WQARF Registry Report.

5. Call to the Public

Ms. Clement asked how the remediation of the North Plume Site is being funded. Mr. Chiaradia replied that WQARF is funded through legislative action. Mr. Shirley asked who operates the North Plume Site remediation system for this WCP site. Mr. Chiaradia replied that the State operates the system.

6. Future Meeting Plans/Agenda Discussion

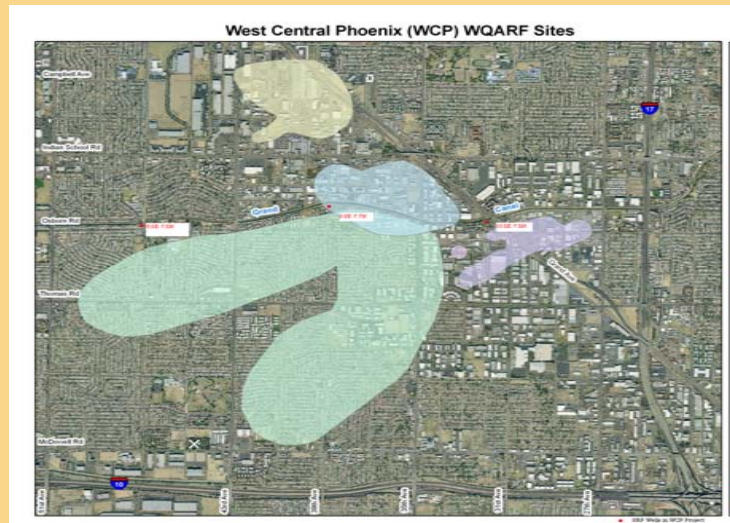
Ms. Olivarez stated that because of budget issues the CAB and interested community would get updates via email and/or phone calls on the WCP WQARF sites' activities. Ms. Olivarez asked everyone to please sign in and mark "yes" if they would like to be on the update list.

7. Adjournment

After no further questions, Ms. Keene made a motion to close the meeting. Mr. Holzer seconded the motion, and Mr. Stoltzfus closed the meeting.

West Central Phoenix Community Advisory Board Meeting

**WCP
WQARF
SITES
UPDATE**



*André Chiaradia,
Project Manager
October 2009*

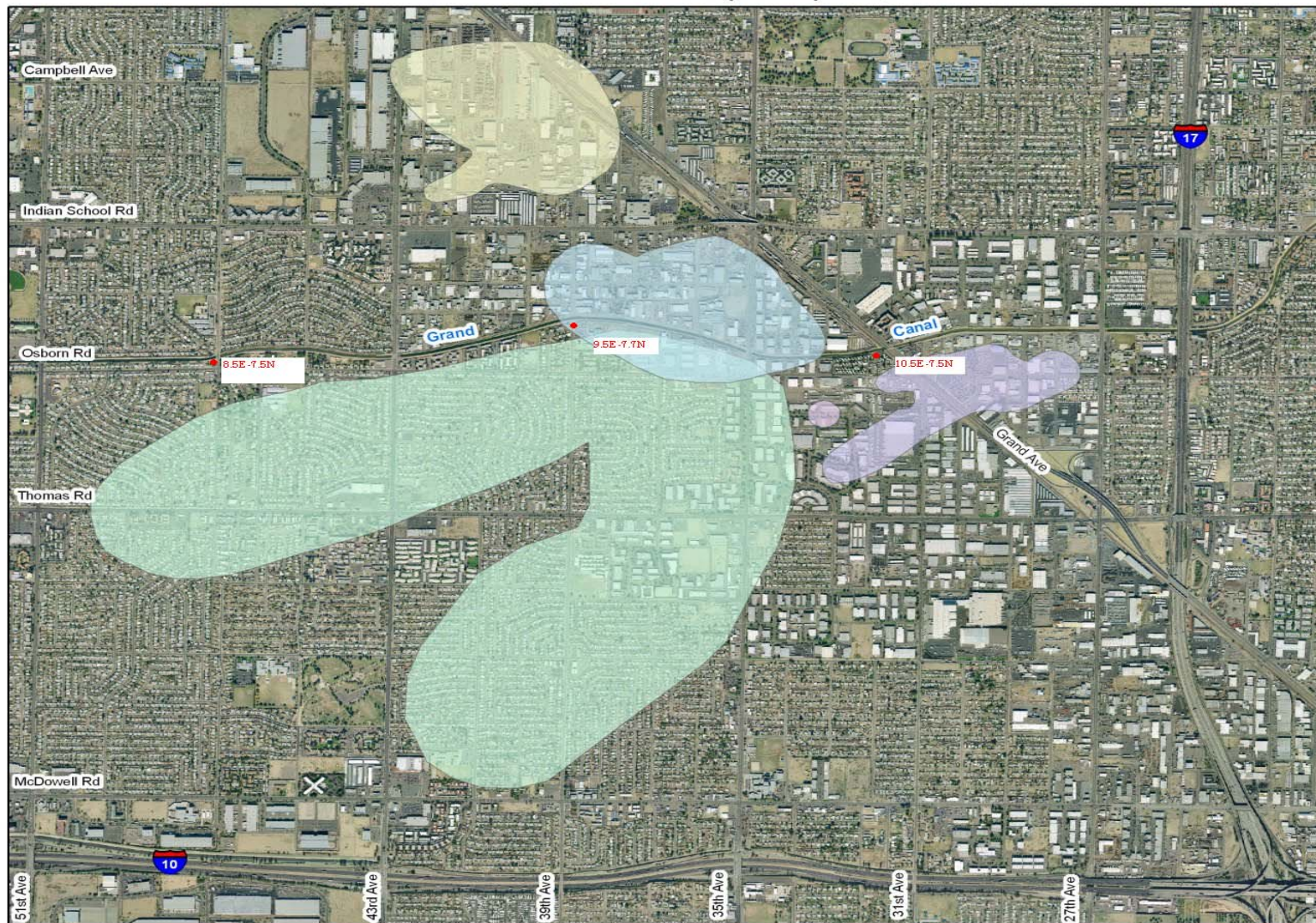


WCP OVERVIEW

- ADEQ designated the area of groundwater contamination as the West Central Phoenix WQARF site
- The area was placed in the WQARF Priority List in 1987
- In 1998, the five WCP Sites were separated out and entered into the WQARF Registry


WCP OVERVIEW

West Central Phoenix (WCP) WQARF Sites




ADEQ
Arizona Department
of Environmental Quality

Area Map




State of Arizona



Legend

- East Grand Avenue Plume
- North Canal Plume
- North Plume
- West Grand Avenue Plume
- West Osborn Complex Plume

N



0.5

Miles

Phoenix, Arizona
November, 2006

WASTE PROGRAMS DIVISION
GIS and Data Management Unit

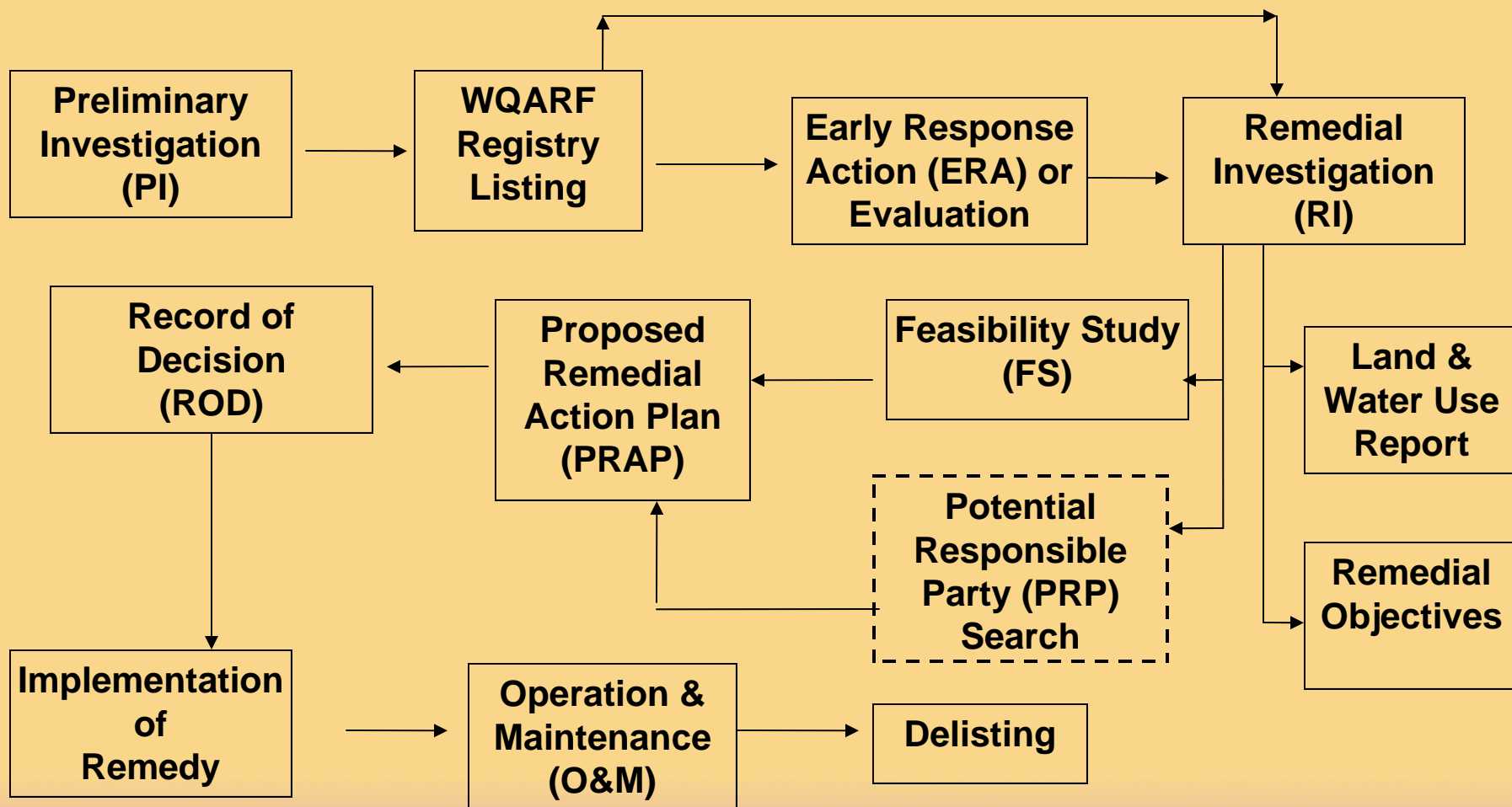
Map produced by Arizona Department of Environmental Quality (ADEQ), GIS and Data Management Unit, TS Summers

D:\Work\wcp\remedial_projects\superfund\Phoenix\2006\WCP-Project 06\WCP-Project 06B.mxd

Data Sources: Arizona Department of Environmental Quality, Arizona Land Resources Information System, Arizona Department of Transportation, Image: Maricopa County 2004

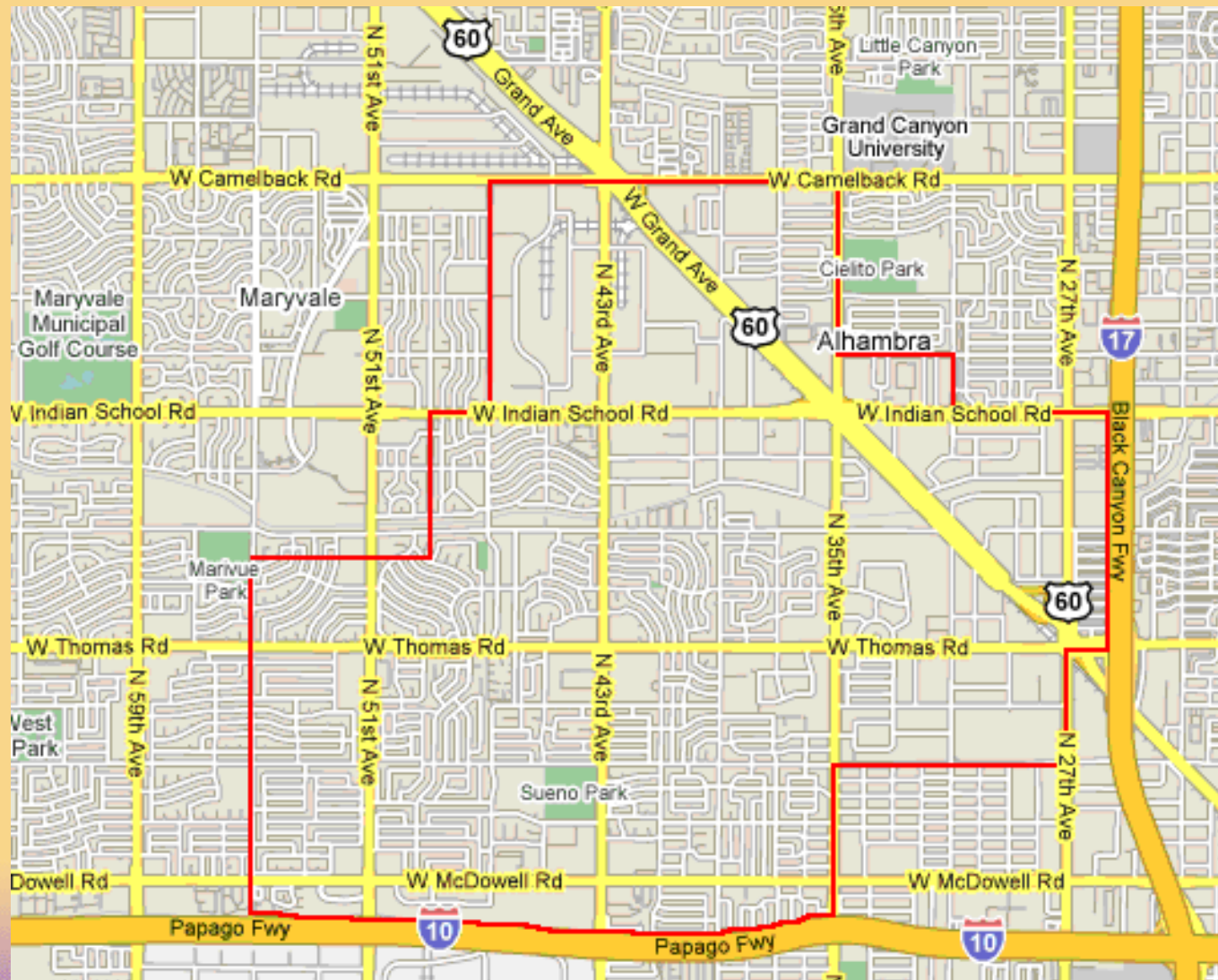
Projection: UTM, NAD 83, Meters

*Site boundaries depicted on the site map represent ADEQ's interpretation of data available at the time the map was constructed. The map is intended to provide the public with basic information as to the estimated geographic extent of known contamination as of the date of map production. The actual extent of contamination may be different. Therefore, the geographic boundaries for this site may change in the future as new information becomes available.





WCP OVERVIEW

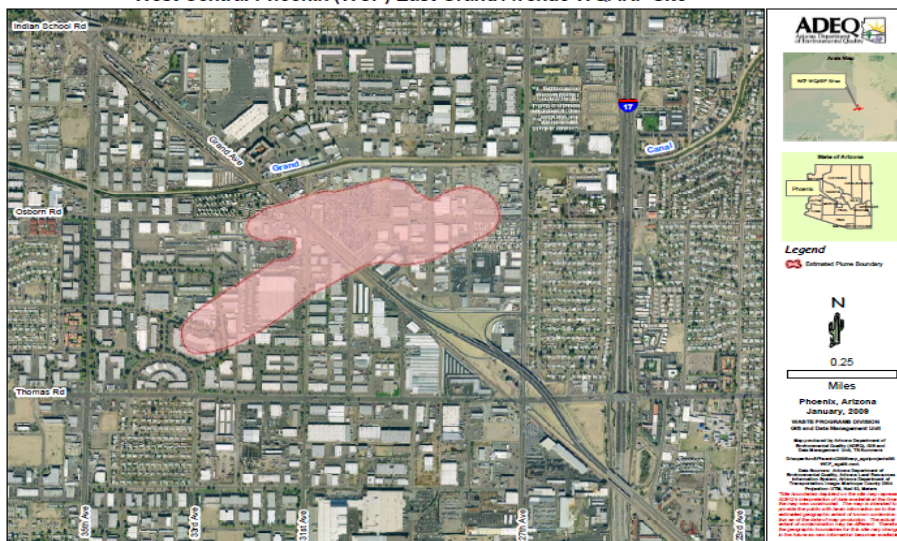


Remedial Systems East Grand Avenue

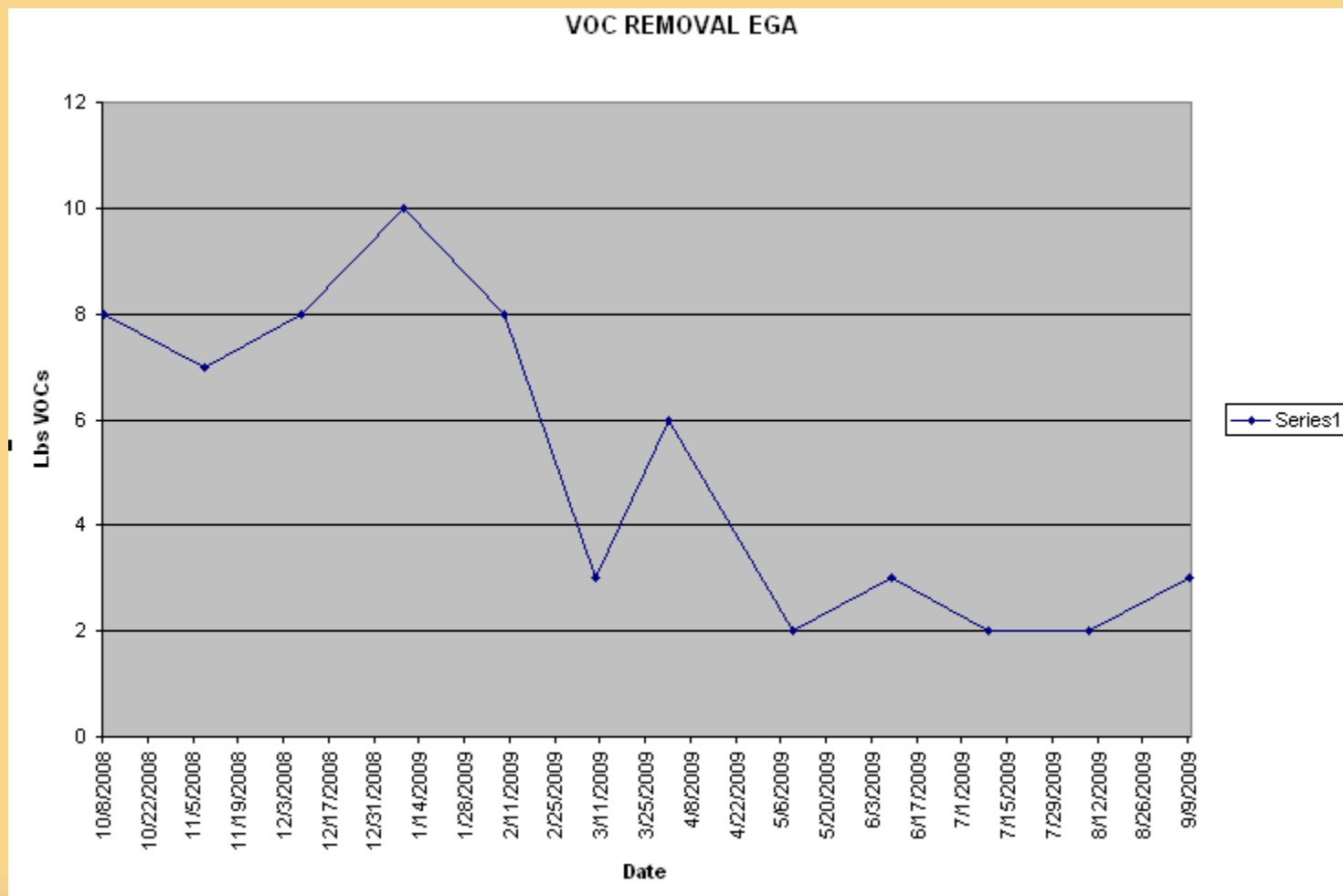


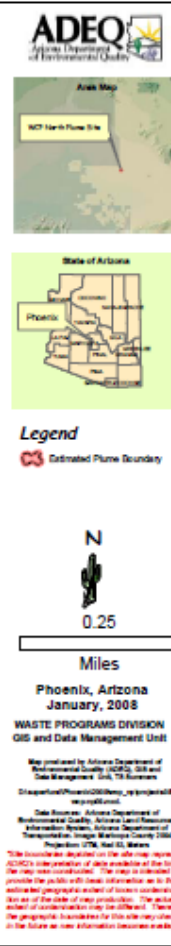
***System has removed
approximately 1,109 pounds
of VOCs to date***

West Central Phoenix (WCP) East Grand Avenue WQARF Site



Remedial Systems East Grand Avenue





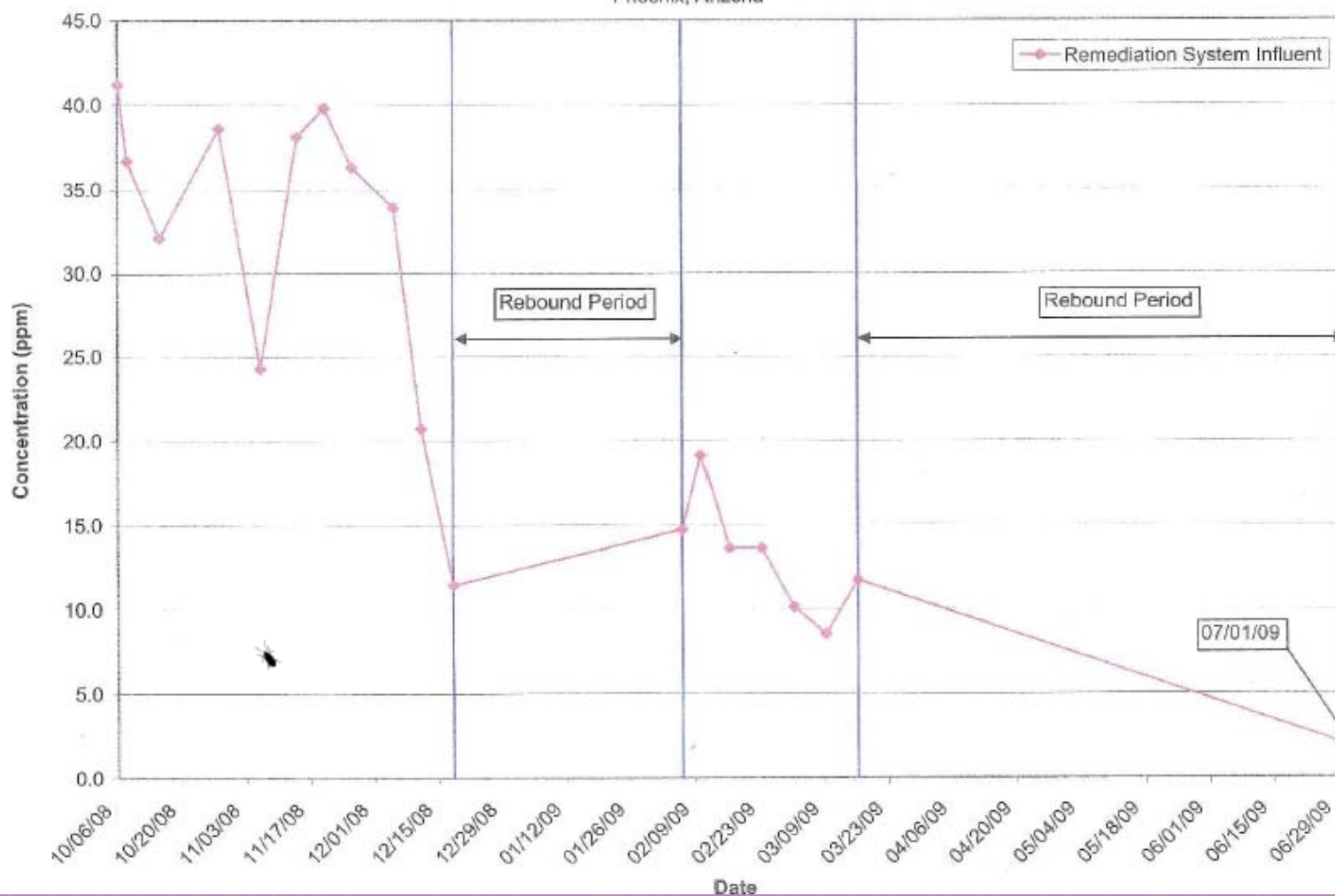
***Hill Brothers Chemical
Company Removed 207 Lbs
of VOCs to date***



Remedial Systems North Plume

FIGURE 2
REMEDATION SYSTEM INFLUENT VOC CONCENTRATIONS
Hill Brothers Chemical Company
Phoenix, Arizona

amec



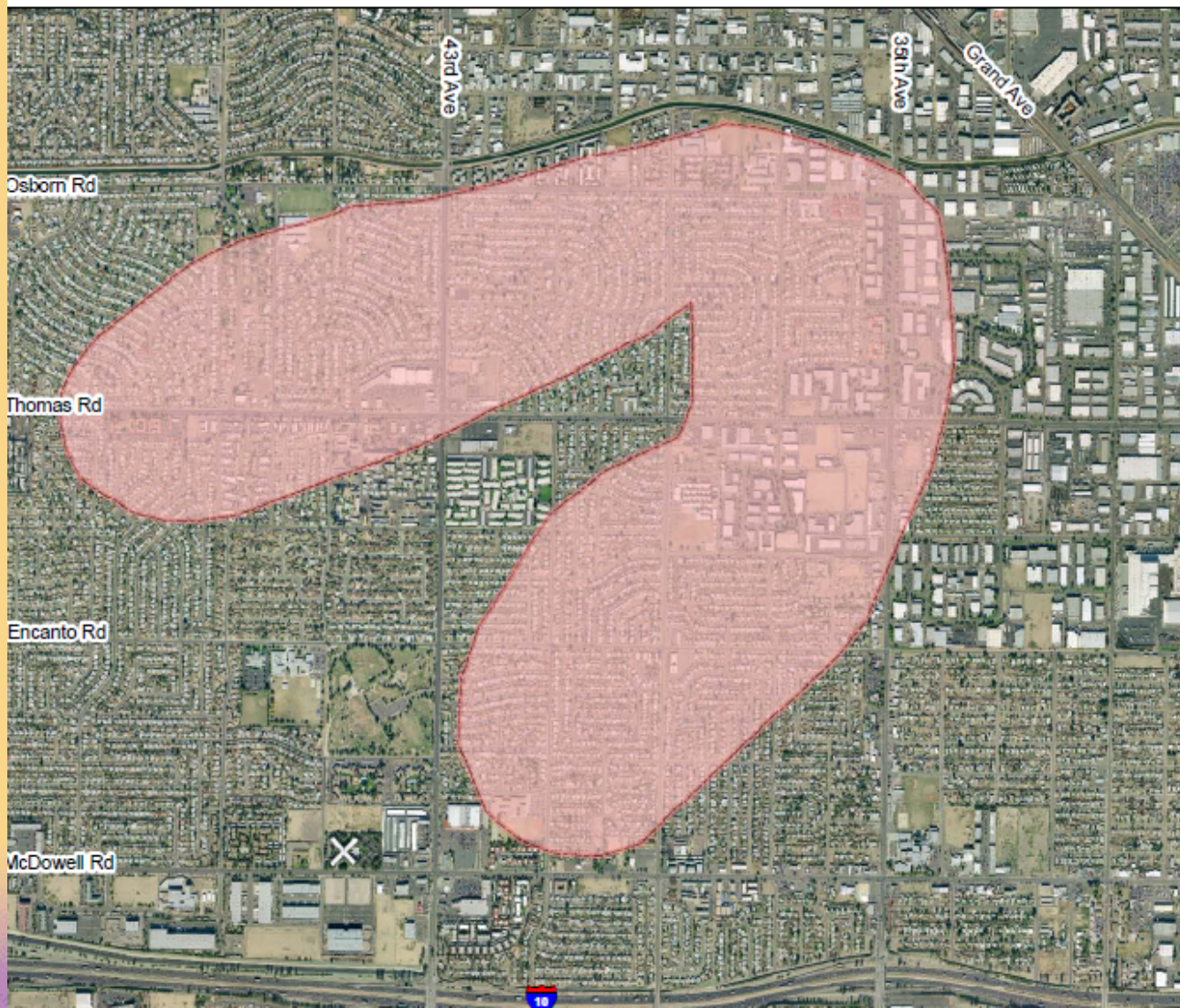
SVET System F&B Manufacturing



Has removed approximately 41,654 lbs of VOCs to date

Remedial Activities West Osborn Complex

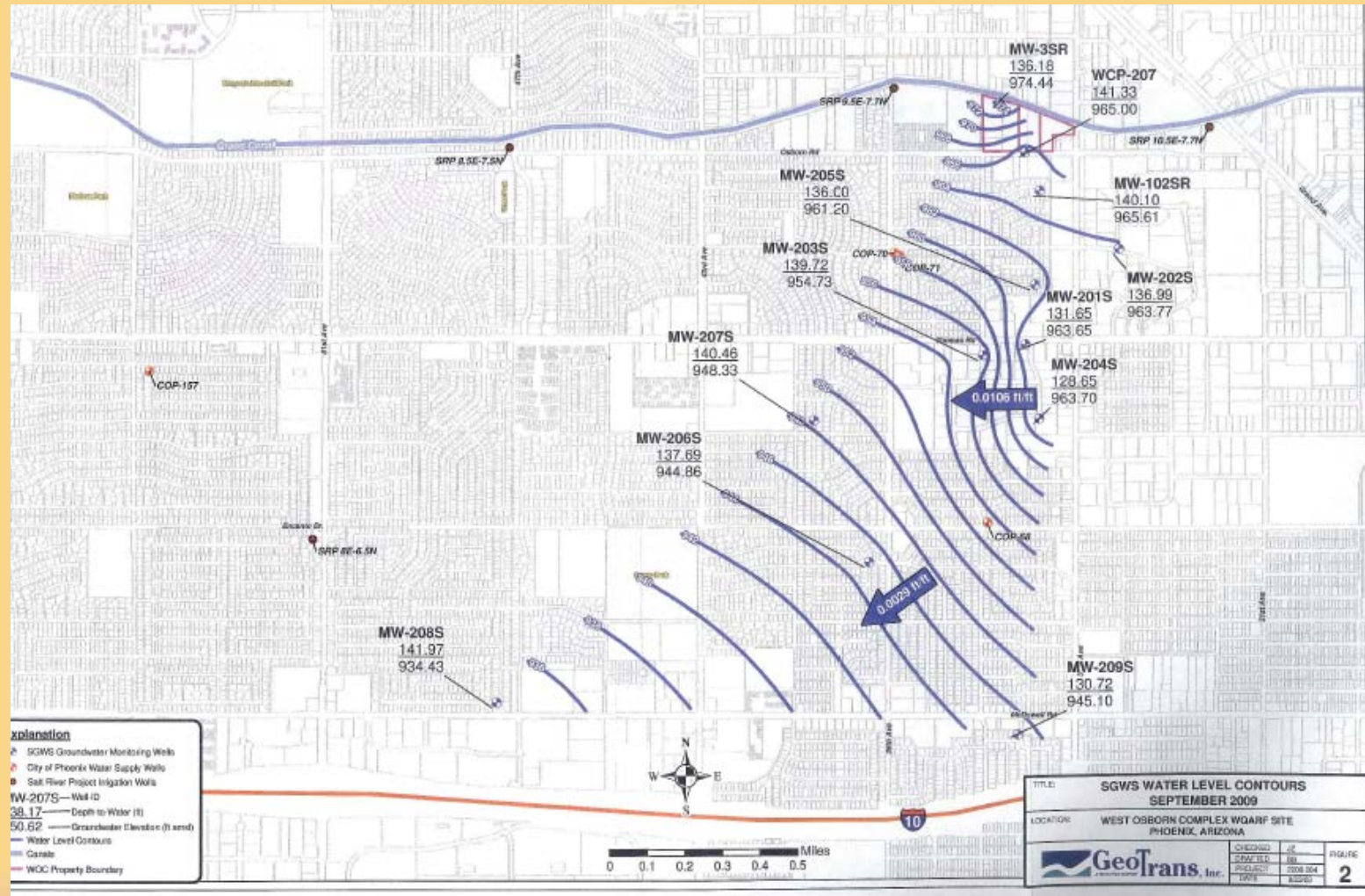
West Central Phoenix (WCP) West Osborn Complex WQARF Site



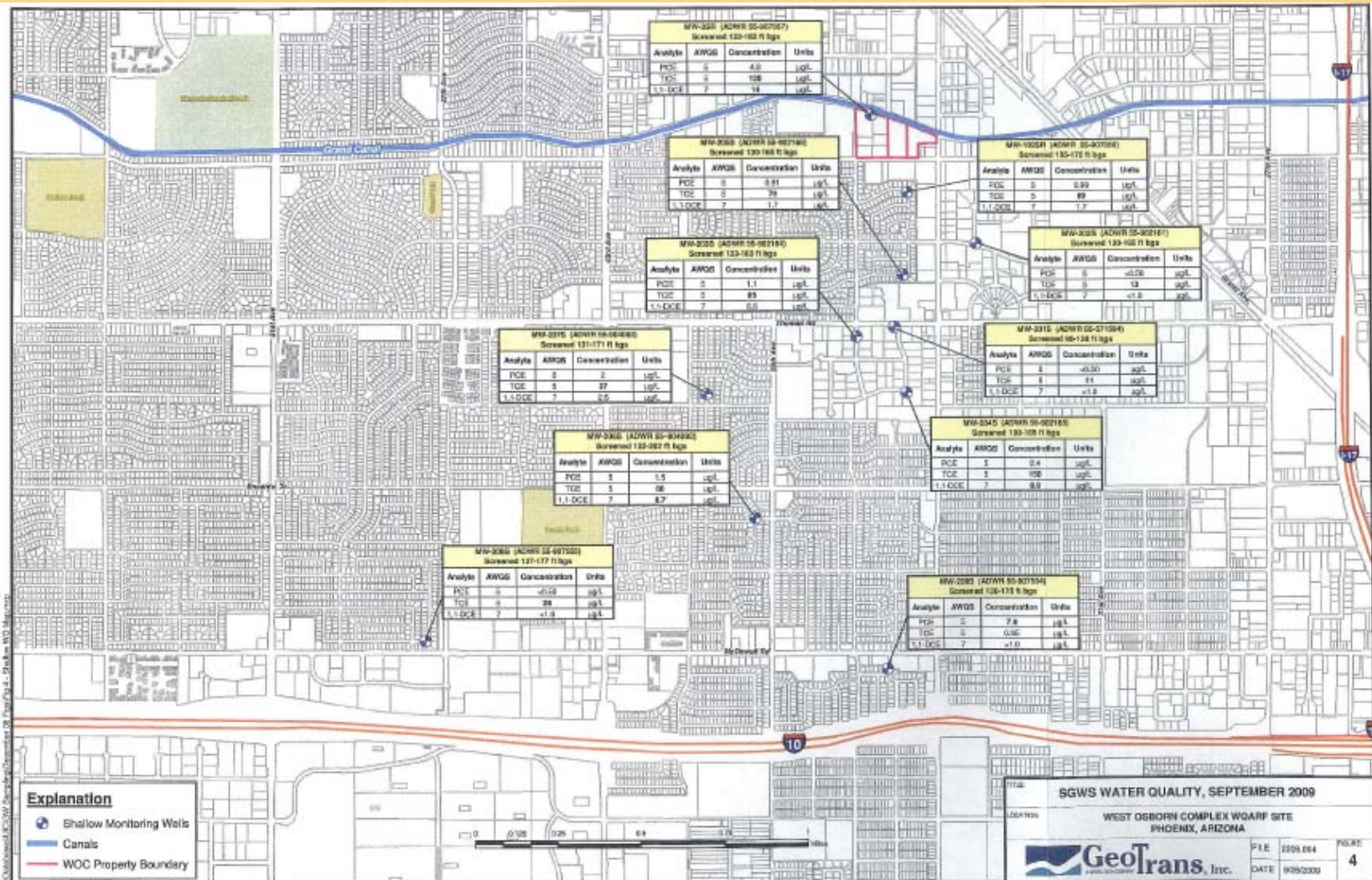
Project Status

- Semi-Annual Monitoring continues
- Feasibility Study Report
- Draft FS for Deep Plume has been completed
- Draft FS for Shallow Plume has been completed
- Task Offer has been issued to evaluate the FS Reports and prepare a Proposed Remedial Action Plan (PRAP)

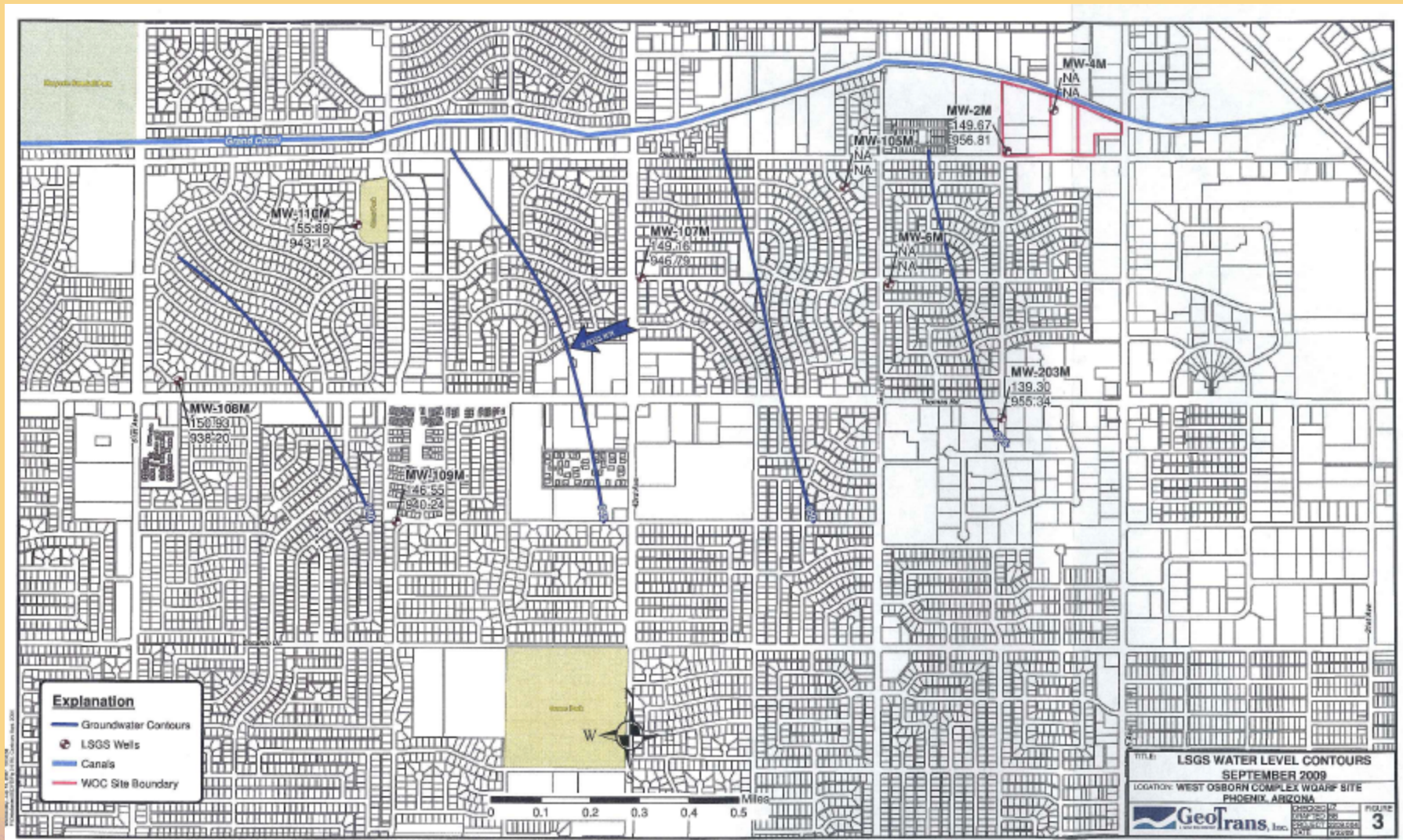
Remedial Activities West Osborn Complex



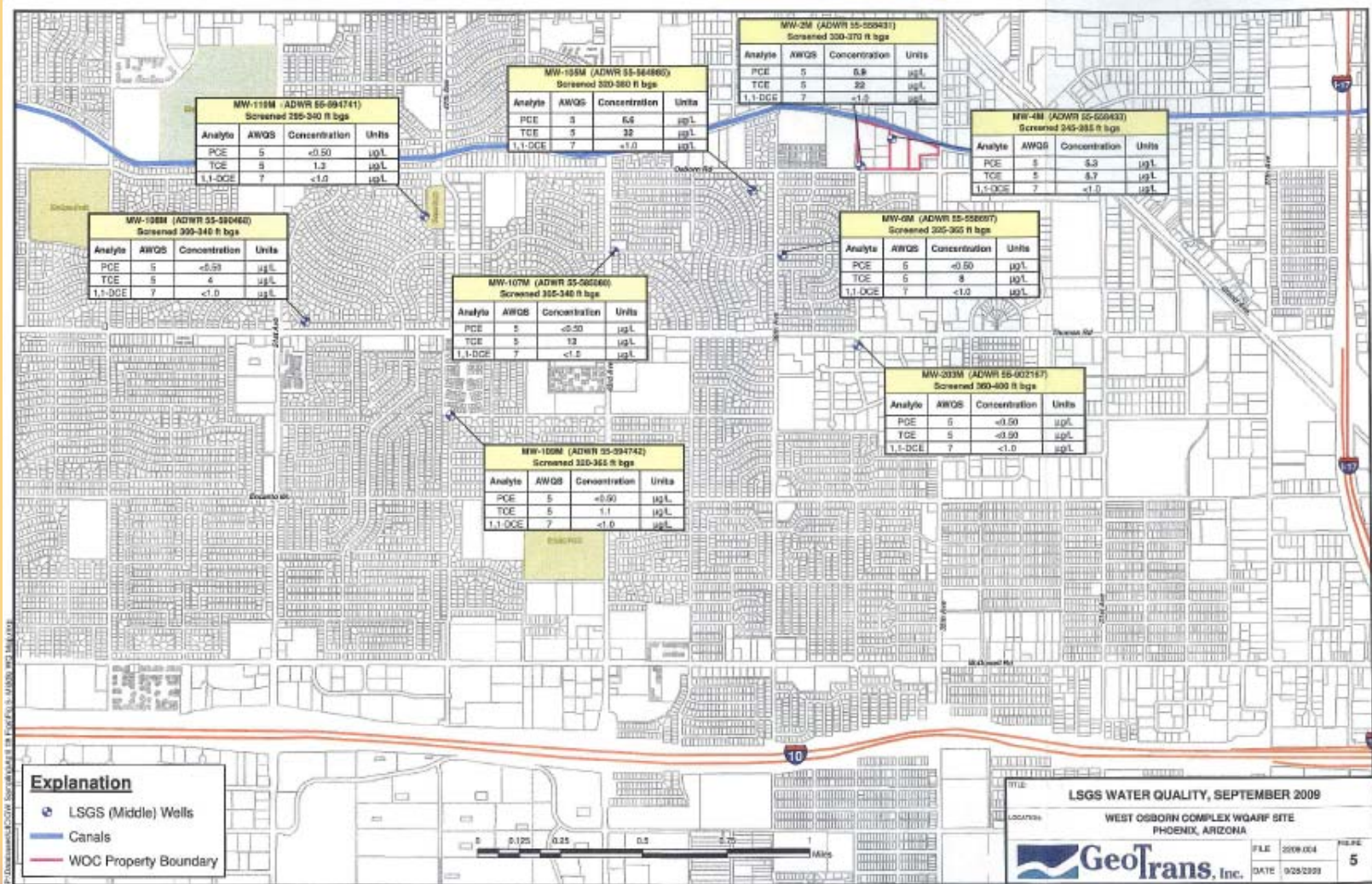
Remedial Activities West Osborn Complex



Remedial Activities West Osborn Complex



Remedial Systems West Osborn Complex





?? QUESTIONS ??

Thank You

