



Highway 260 and Main Street Site Overview

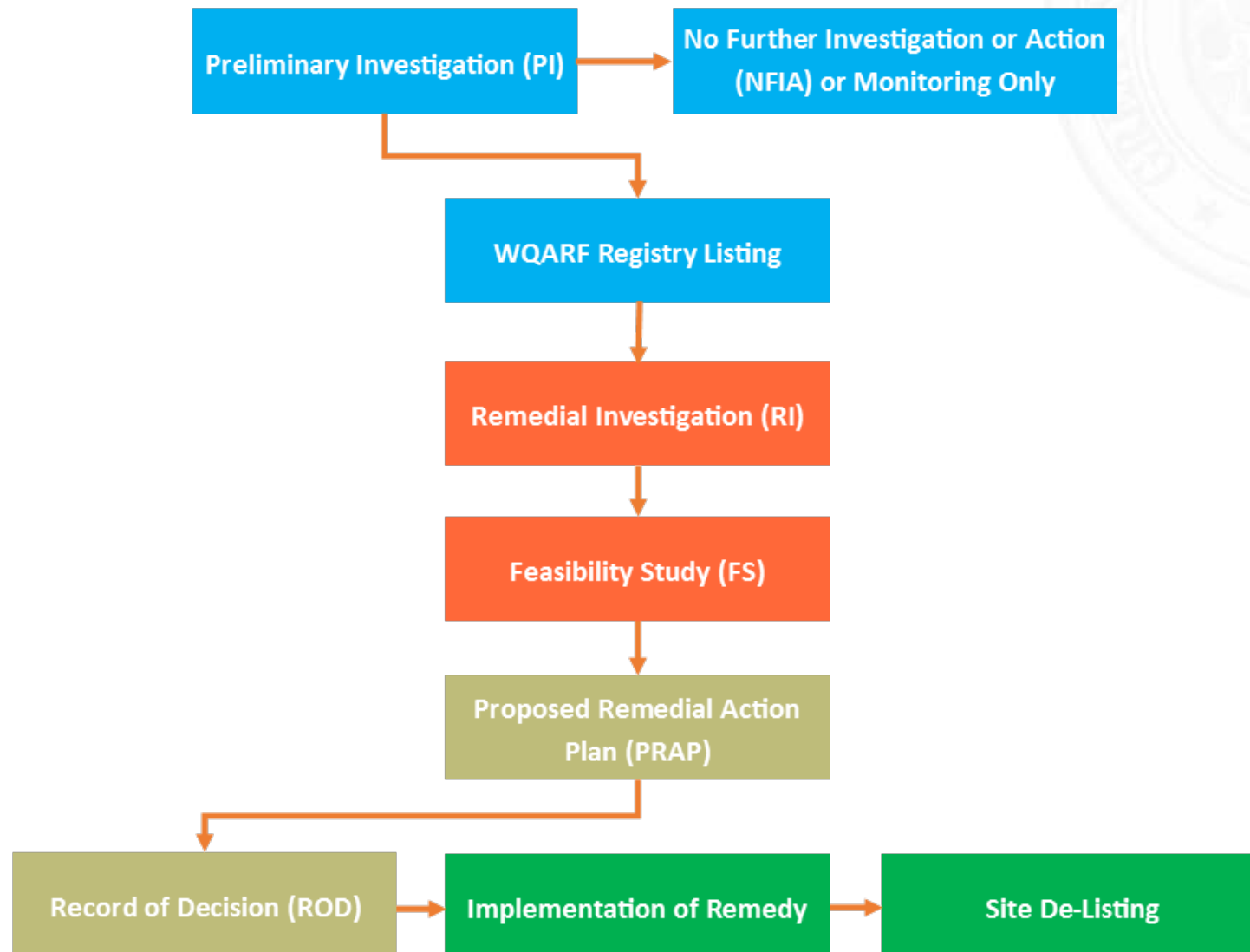
July 10, 2018

- WQARF Program
- Site Background
- Preliminary Investigation/WQARF Listing
- Remedial Investigation
- Upcoming Work

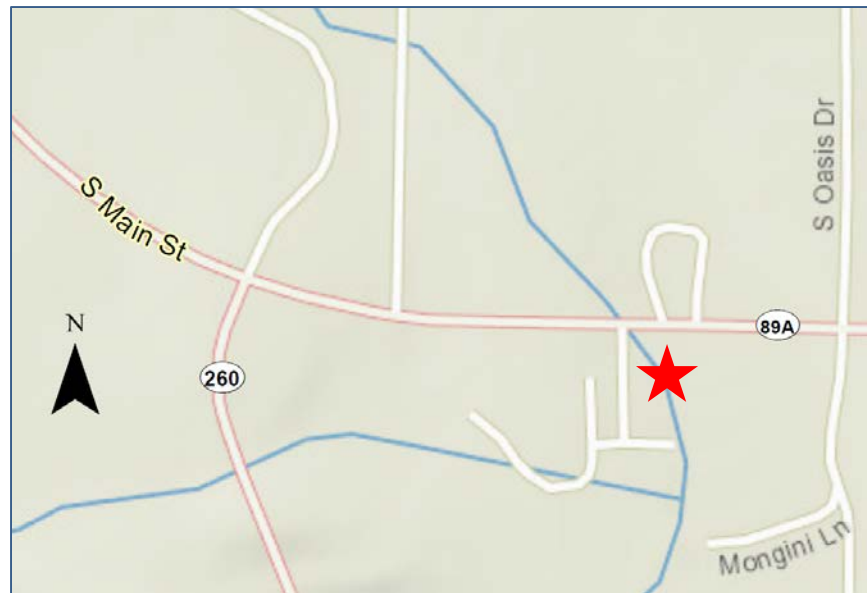
- Water Quality Assurance Revolving Fund (WQARF) – aka “State Superfund”
- WQARF supports ADEQ in assessing and resolving the threat of contaminated soil and water in the state
- WQARF uses state funds to conduct cleanups and also oversees privately funded efforts.



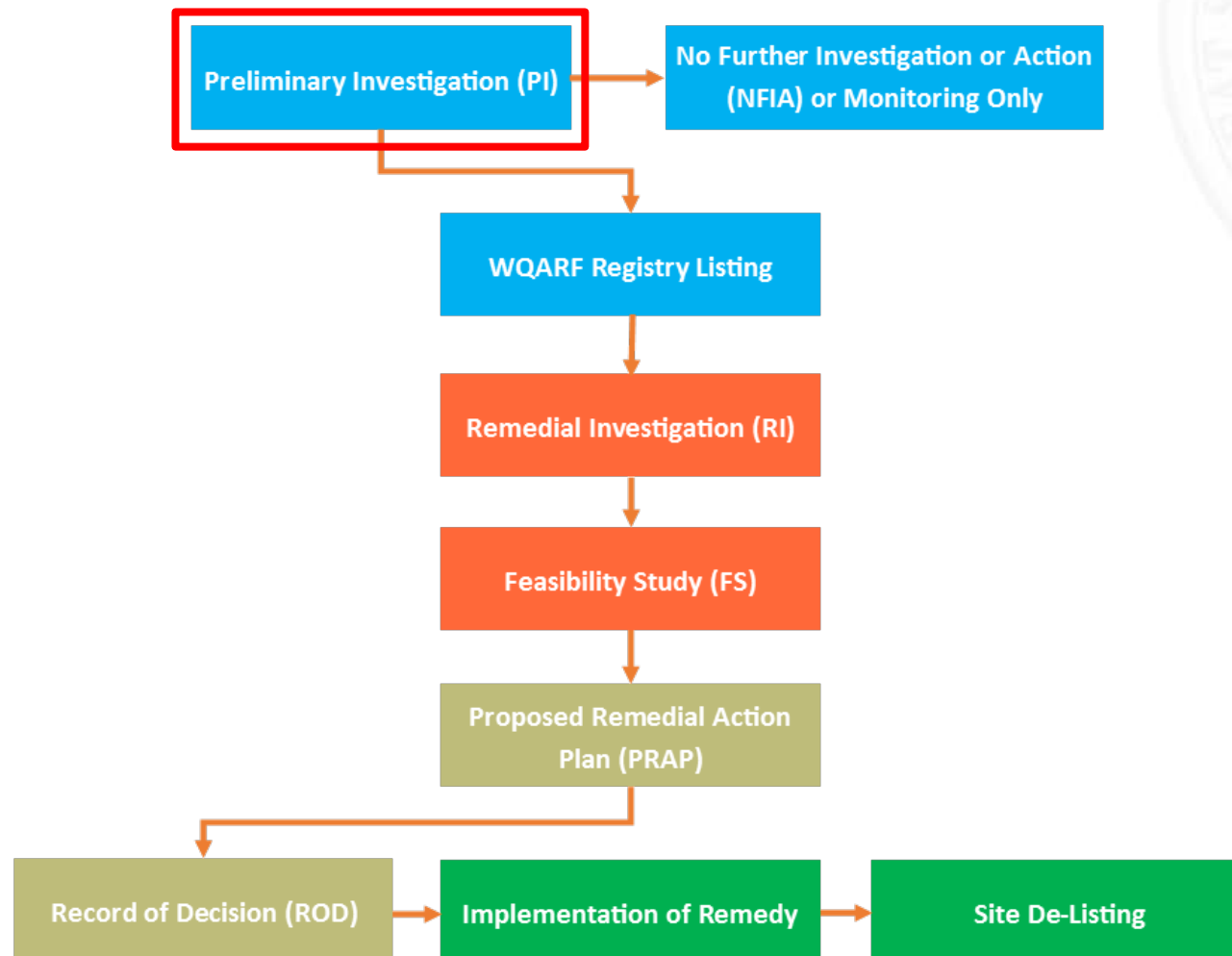
WQARF Process



- Tetrachloroethene (PCE) was detected in an RV Park well near Highway 260 and Main Street in August 2005
- PCE is a volatile organic compound (VOC), used primarily as a dry-cleaning solvent and de-greaser



Preliminary Investigation



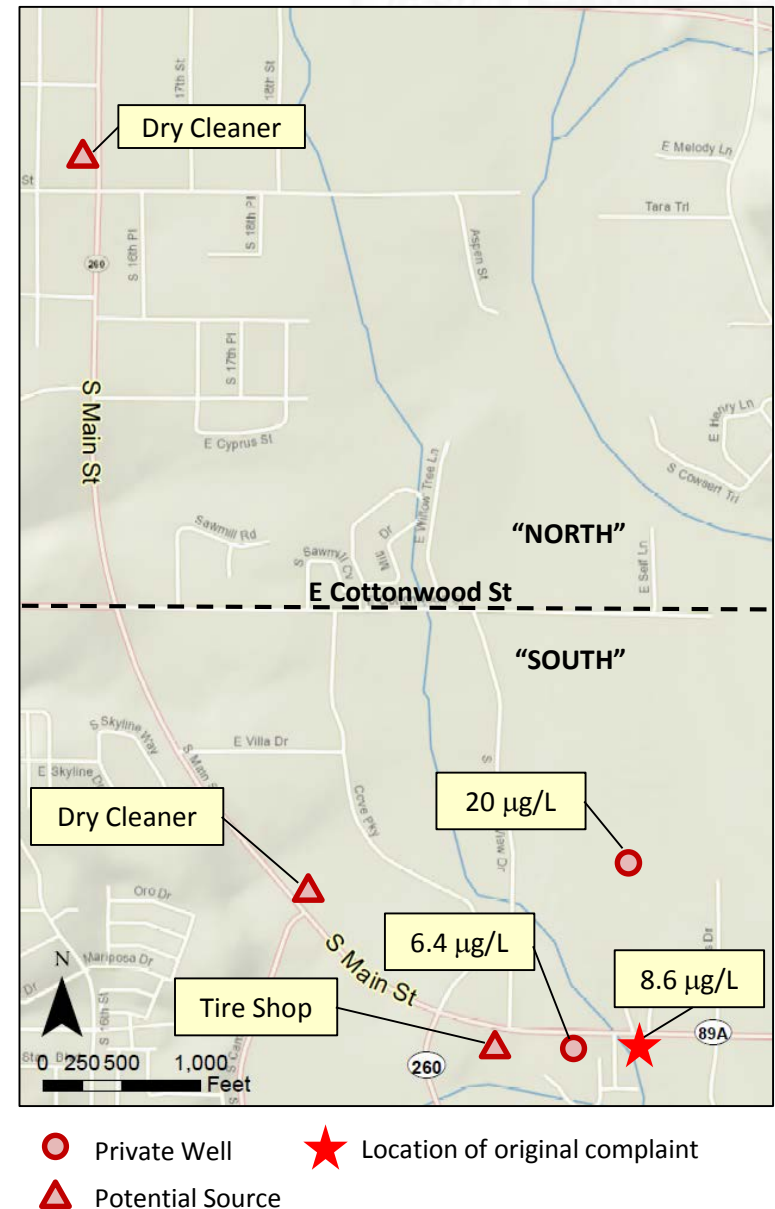
Preliminary investigation conducted near Highway 260 and Main Street:

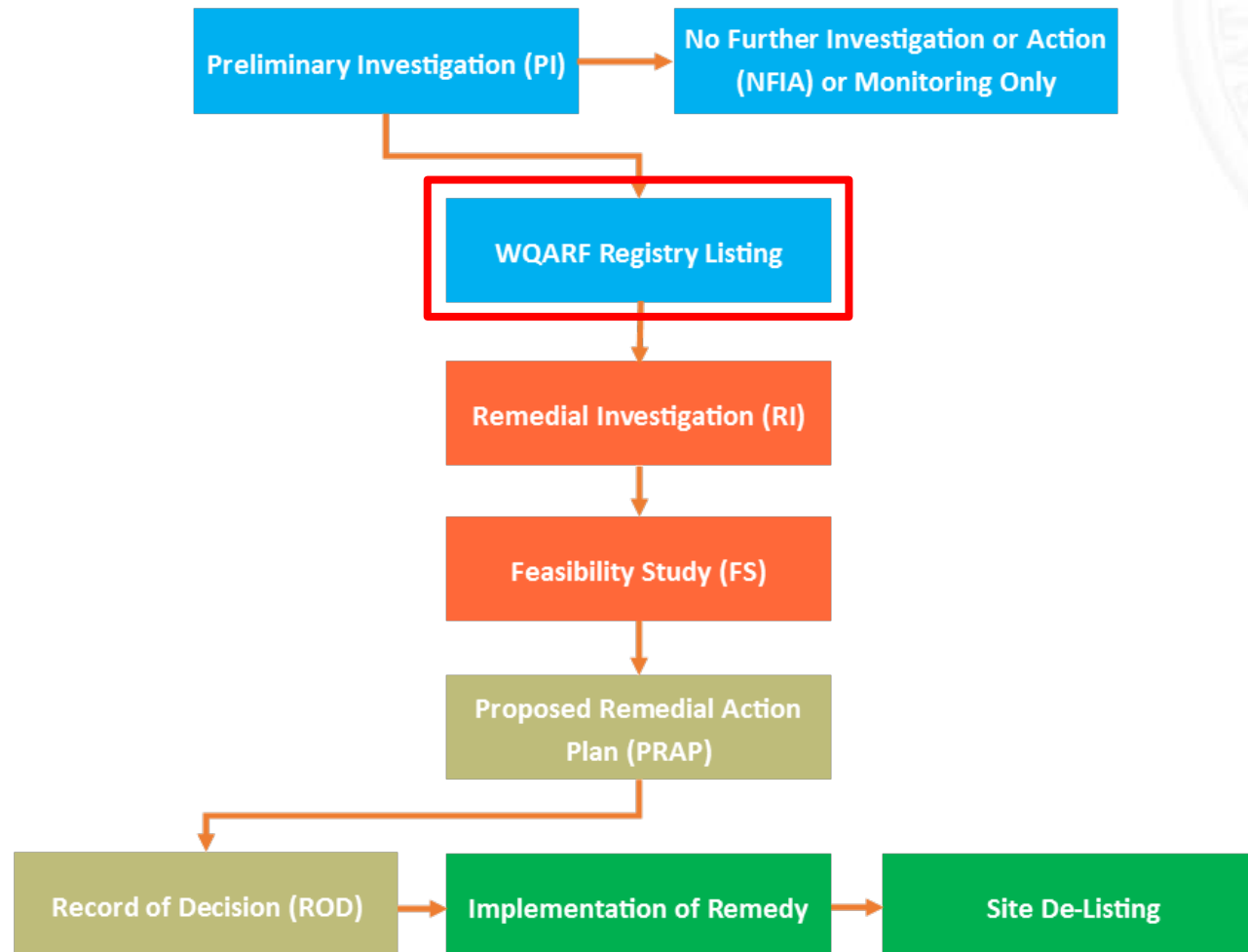
- Private well survey and sampling
- Business search to identify potential source areas
- Soil vapor sampling near potential source areas
- Drilling several temporary boreholes to test deep soil gas and groundwater



Investigation Conclusions:

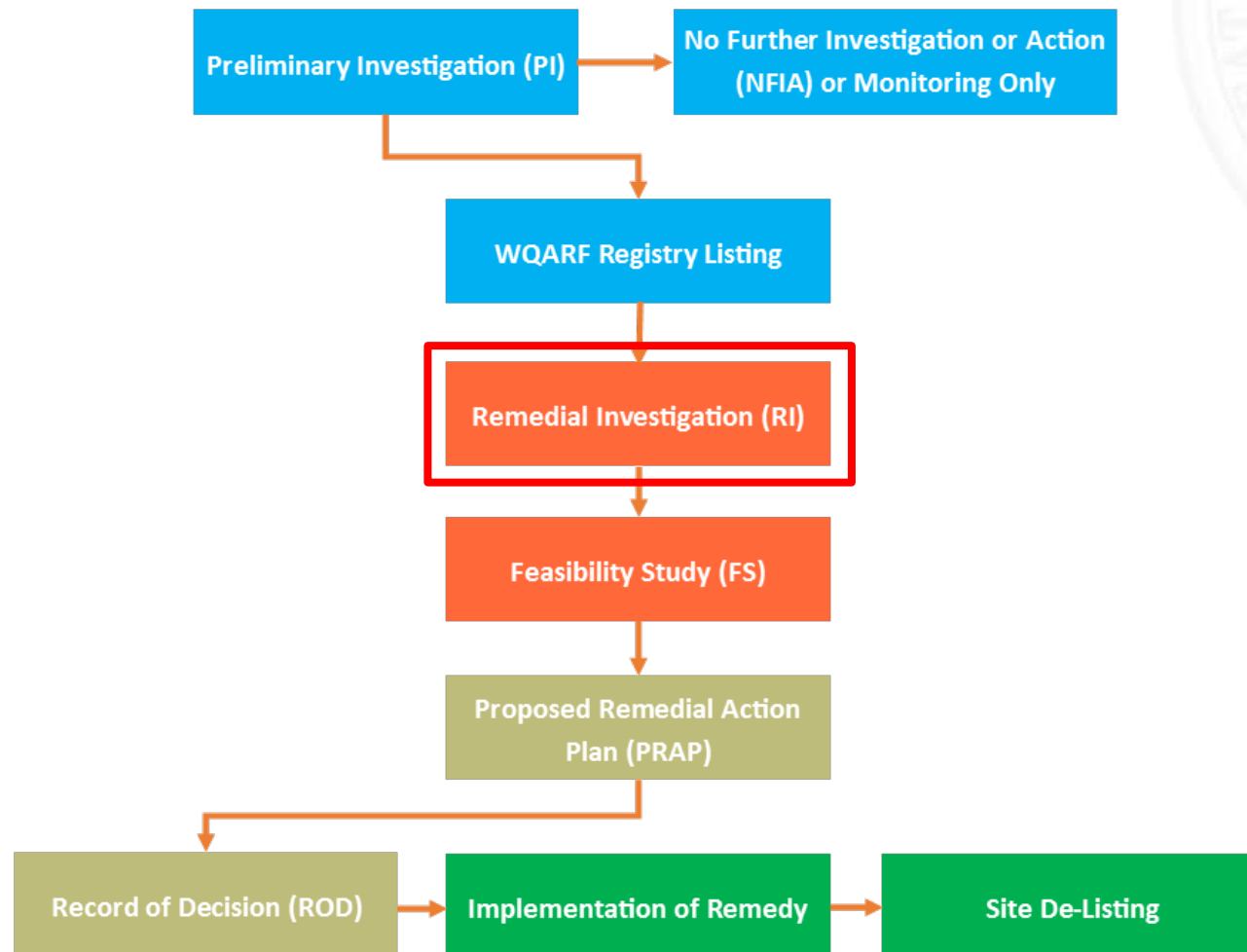
- Soil and groundwater impacts near two dry cleaners and possibly near the tire shop.
- PCE groundwater contamination exceeded the AWQS in private drinking water wells
- The source(s) to each impacted well remained unclear due to lack of hydrogeologic data

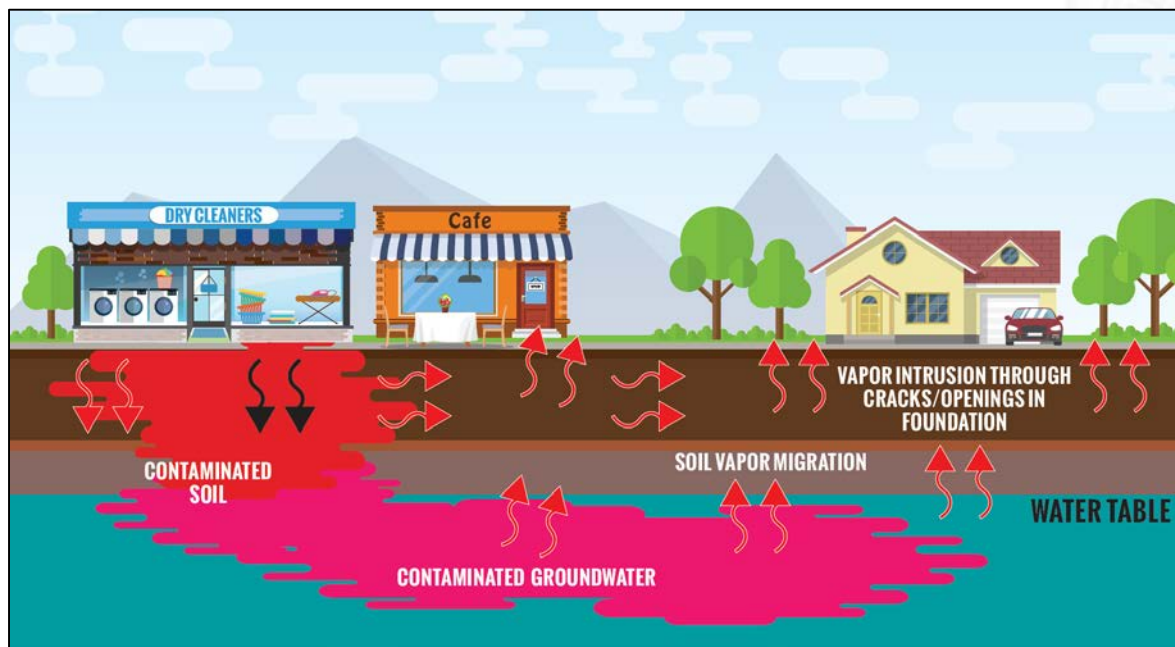




- Public comment period was held October-November 2016
- Site officially listed on the WQARF registry December 16, 2016
- Fact sheets mailed in March 2017



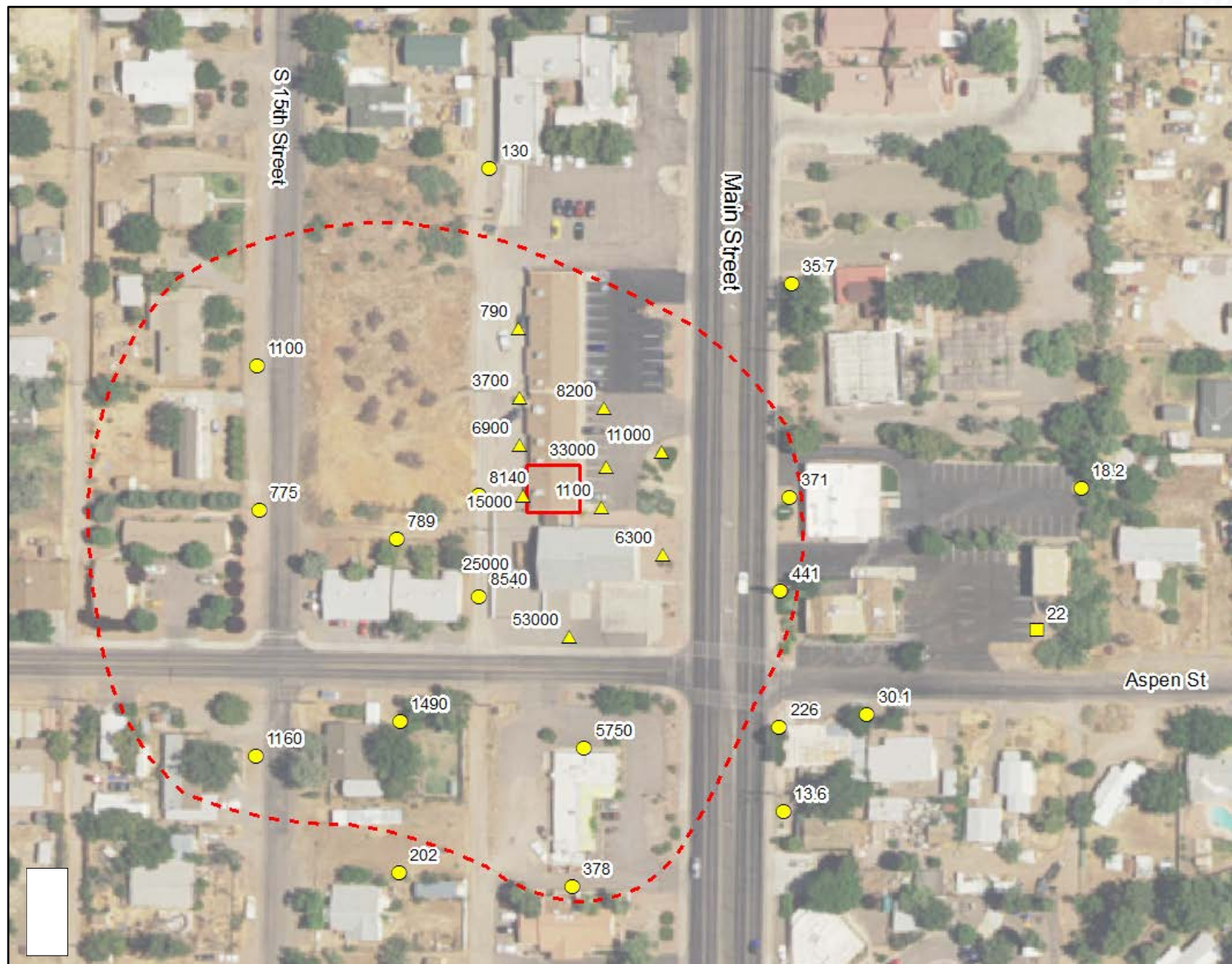




Remedial Investigation Activities To Date:

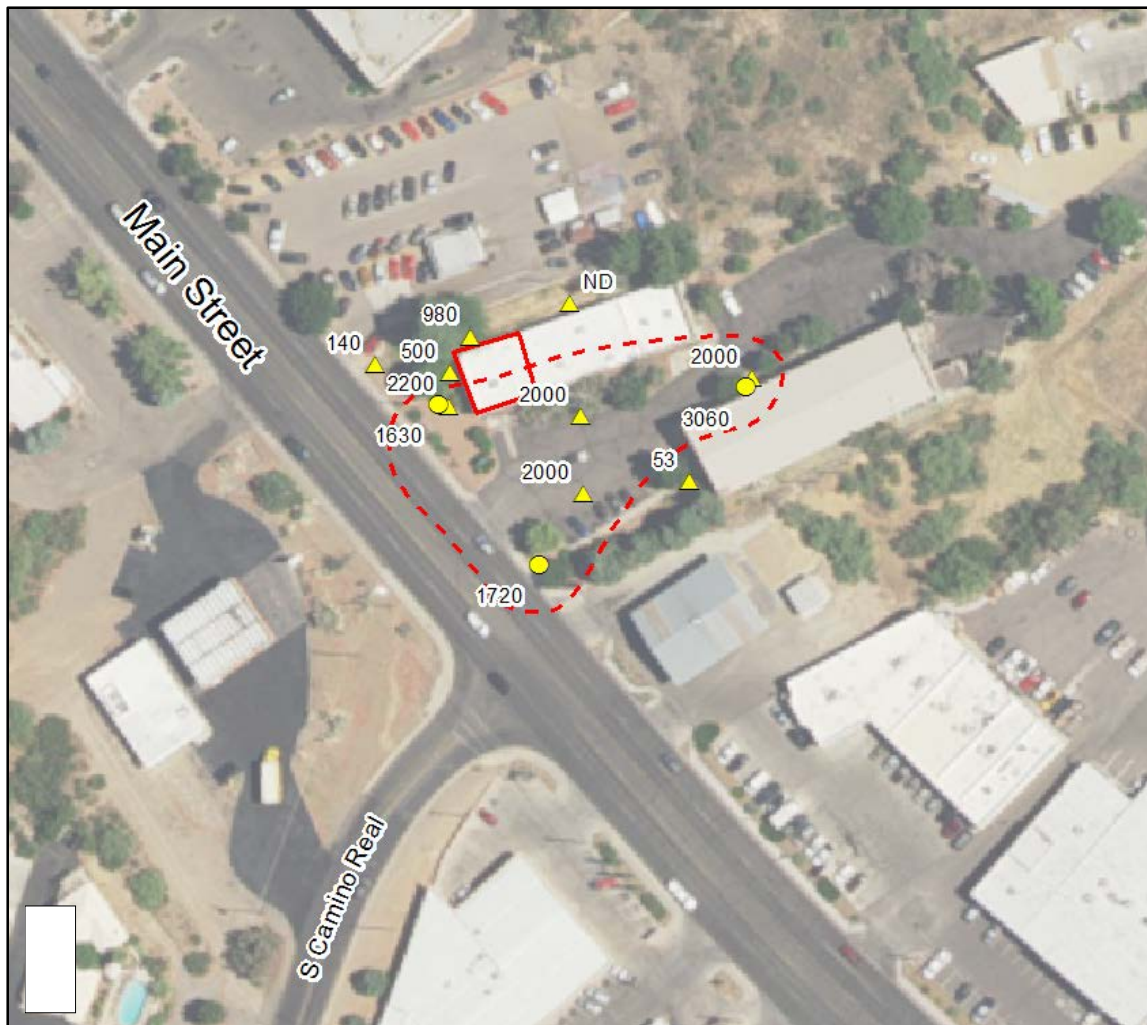
- Soil Gas Sampling for Source Confirmation
- Vapor Intrusion Evaluation
- Monitoring Well Installation
- Groundwater Monitoring

Soil Gas Investigation - North



- Former Dry Cleaner
- Estimated extent of PCE exceeding a residential screening level ($367 \mu\text{g}/\text{m}^3$) in soil gas

Soil Gas Investigation - South



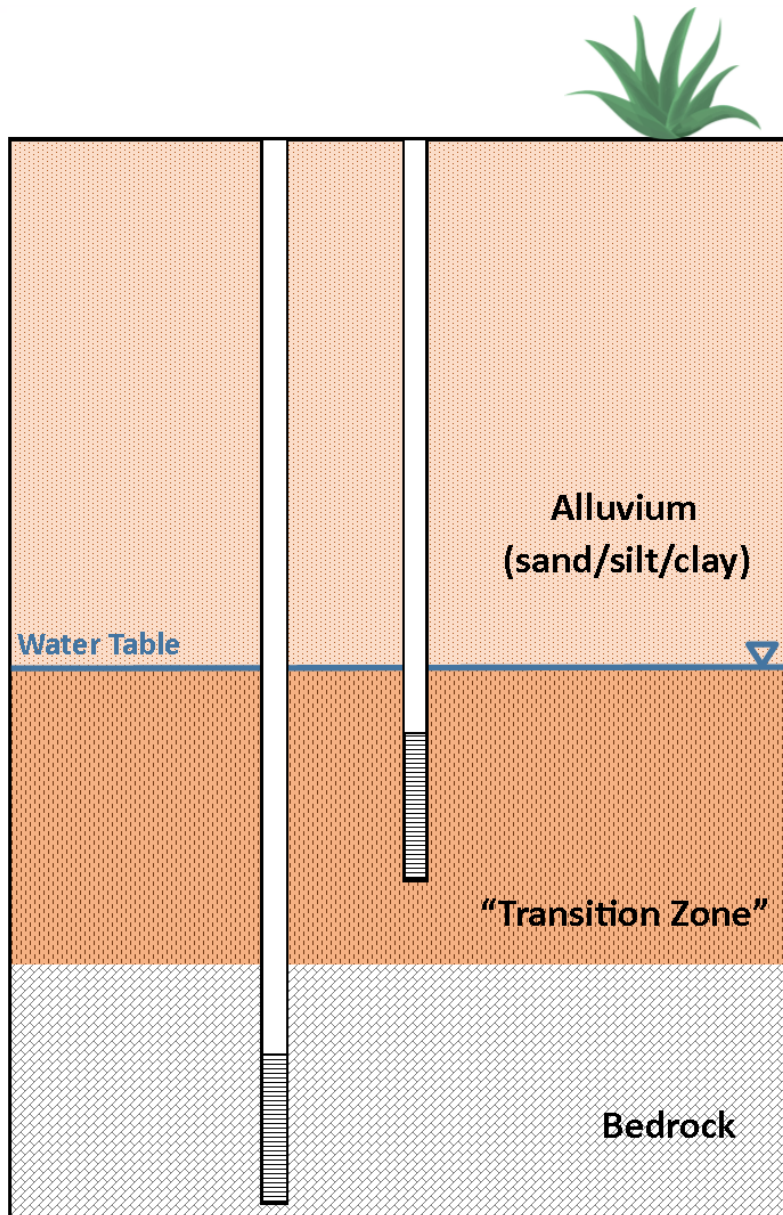
- May 2018
- February 2018
- Former Dry Cleaner
- Estimated extent of PCE exceeding a non-residential screening level ($1567 \mu\text{g}/\text{m}^3$) in soil gas

Soil-gas sampling results are displayed in $\mu\text{g}/\text{m}^3$

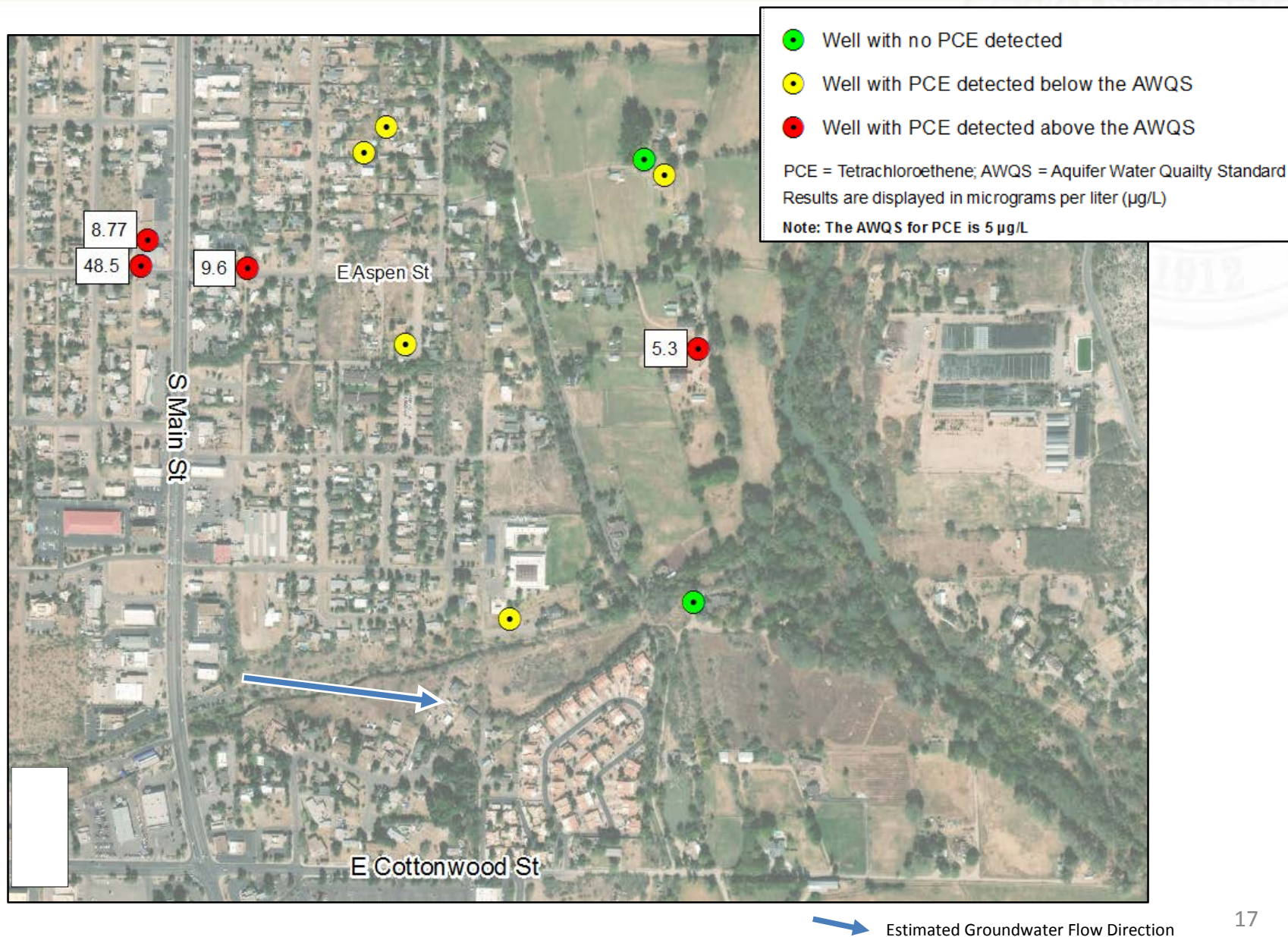
- Indoor air sampling was conducted June/July 2018
- Indoor air samples were collected from commercial and residential properties where PCE concentrations in soil gas had exceeded screening levels.
- Lab analysis and data evaluation is ongoing



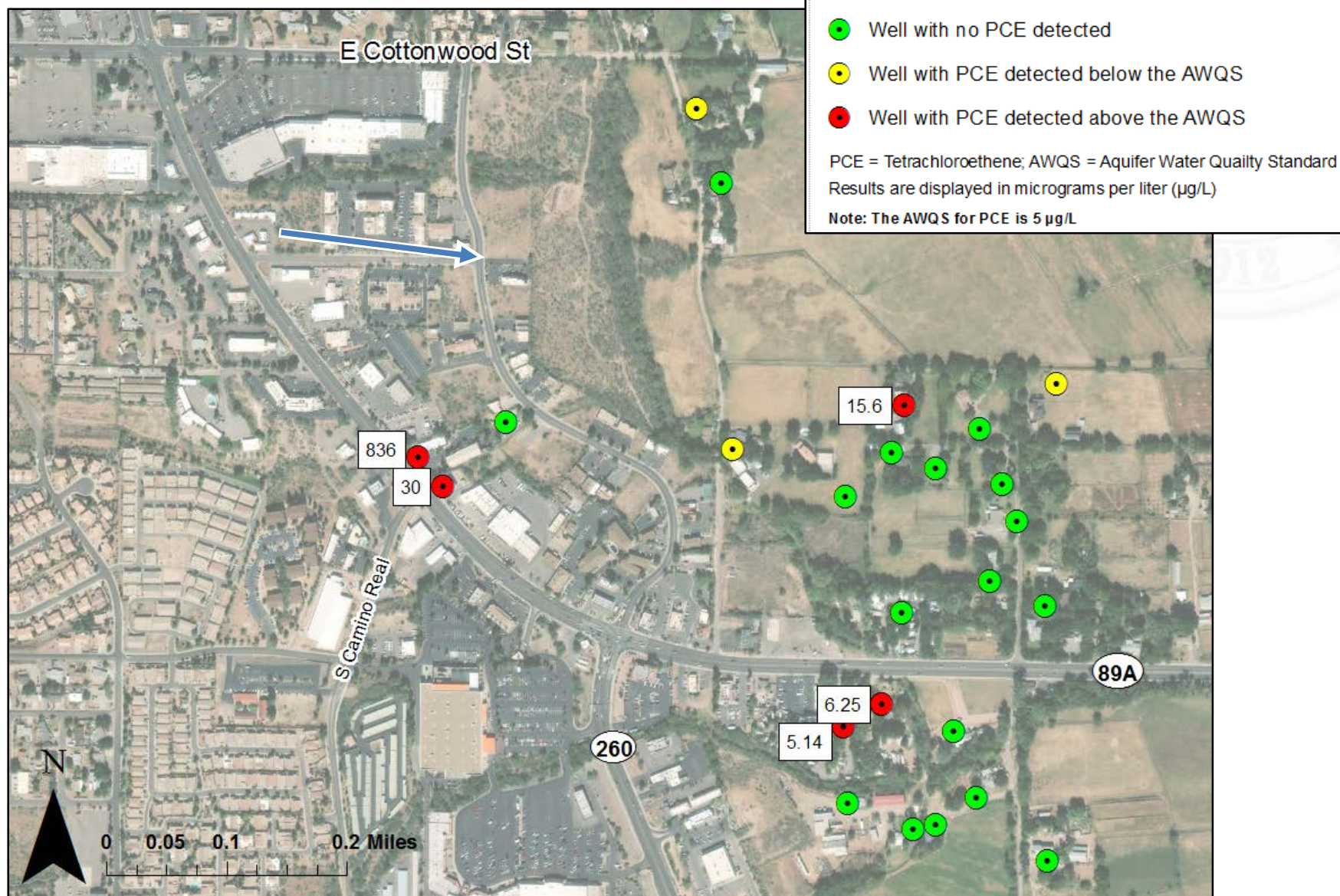
Well Installation



Groundwater Sampling - North



Groundwater Sampling - South



Estimated Groundwater Flow Direction

Summer/Fall 2018:

- Additional well drilling to define the extent of contamination in groundwater
- Data evaluation and conceptual site model development
- Remedial Investigation Report Preparation



Contact Us!

Matt Narter, Project Manager

(520) 770-3128

(800) 234-5677 ext. 5207703125

mn3@azdeq.gov

Wendy Flood, Community Involvement Coordinator

(602) 771-4410

(800) 234-5677 ext. 6027714410

wv1@azdeq.gov



Questions?