

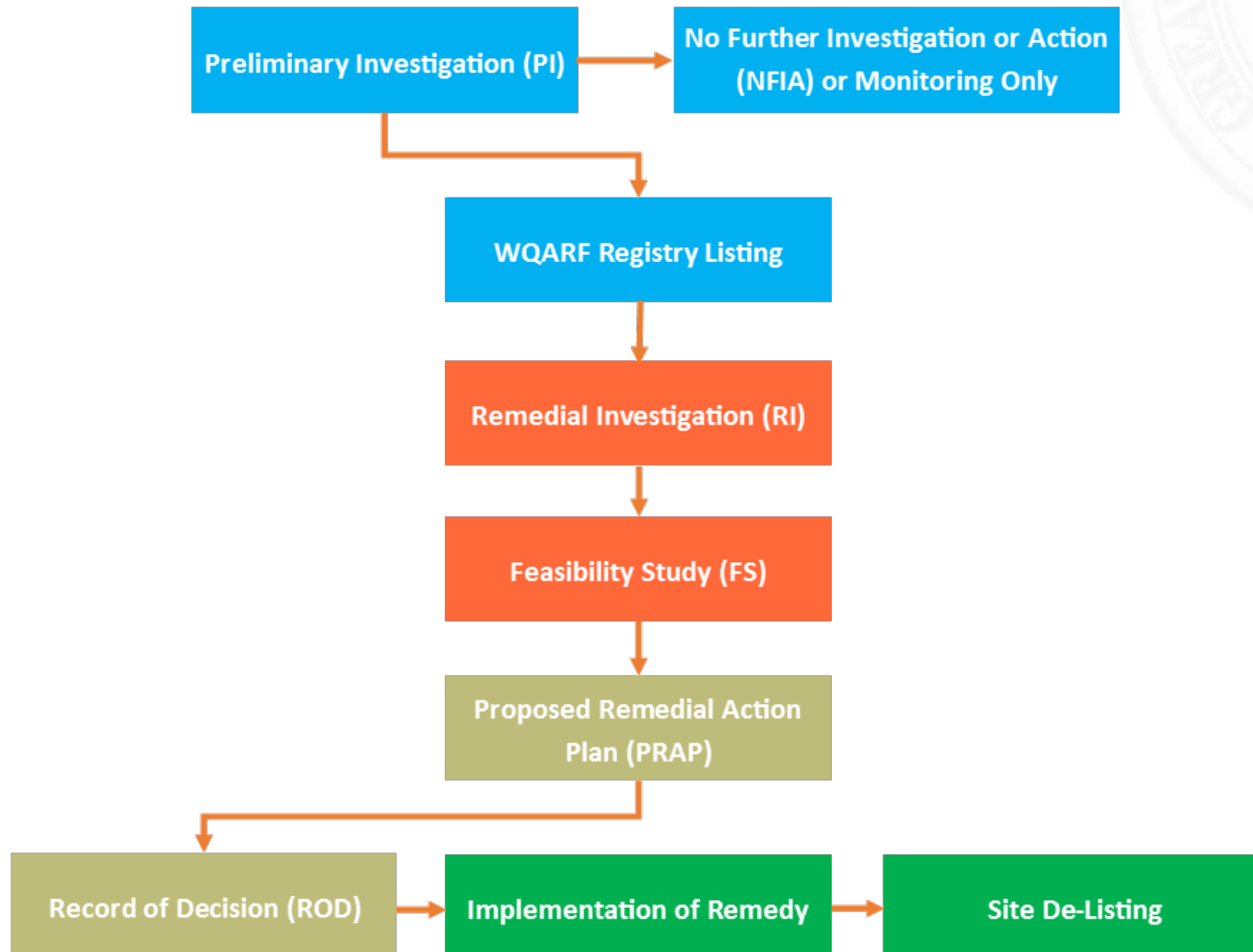


Highway 260 and Main Street Site Overview

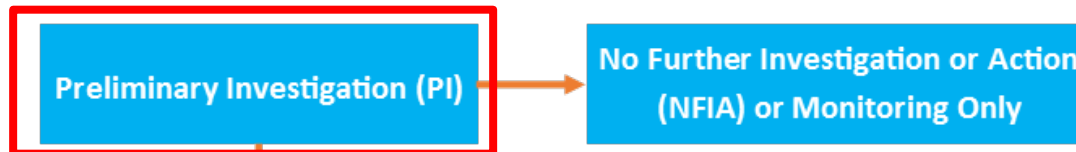
March 4, 2020

- Site Overview
- Groundwater Sampling Update
- Early Response Action Update
- Feasibility Study Progress
- Upcoming Work

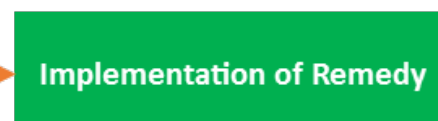
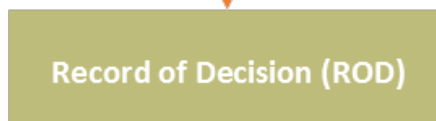
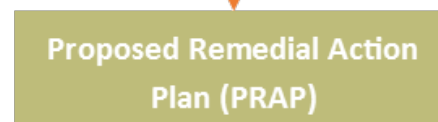
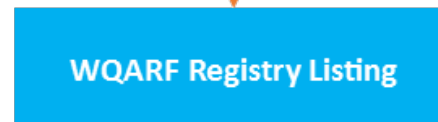
Water Quality Assurance Revolving Fund (WQARF)



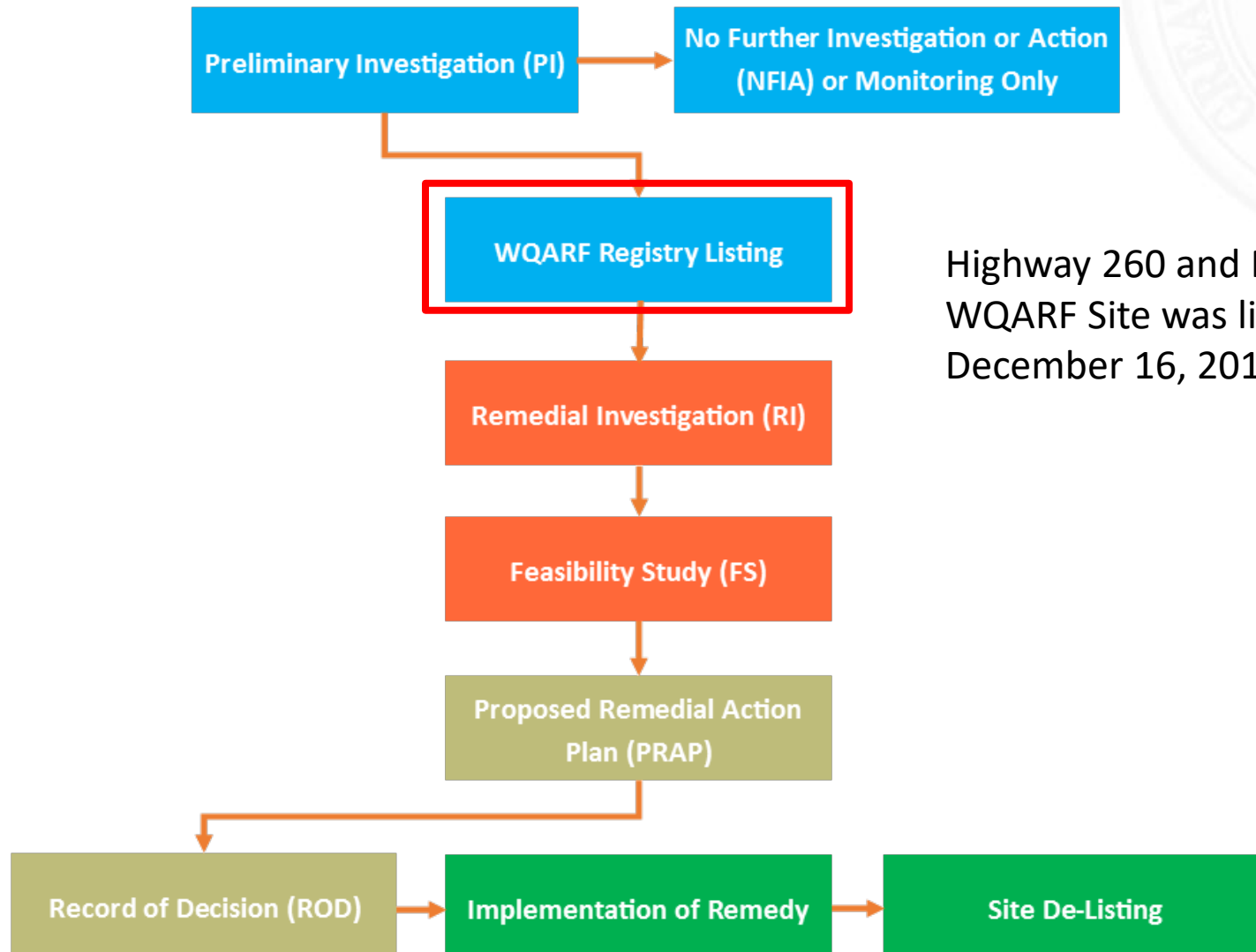
Water Quality Assurance Revolving Fund (WQARF)



PI included business search, soil gas sampling, temporary wells, private well sampling

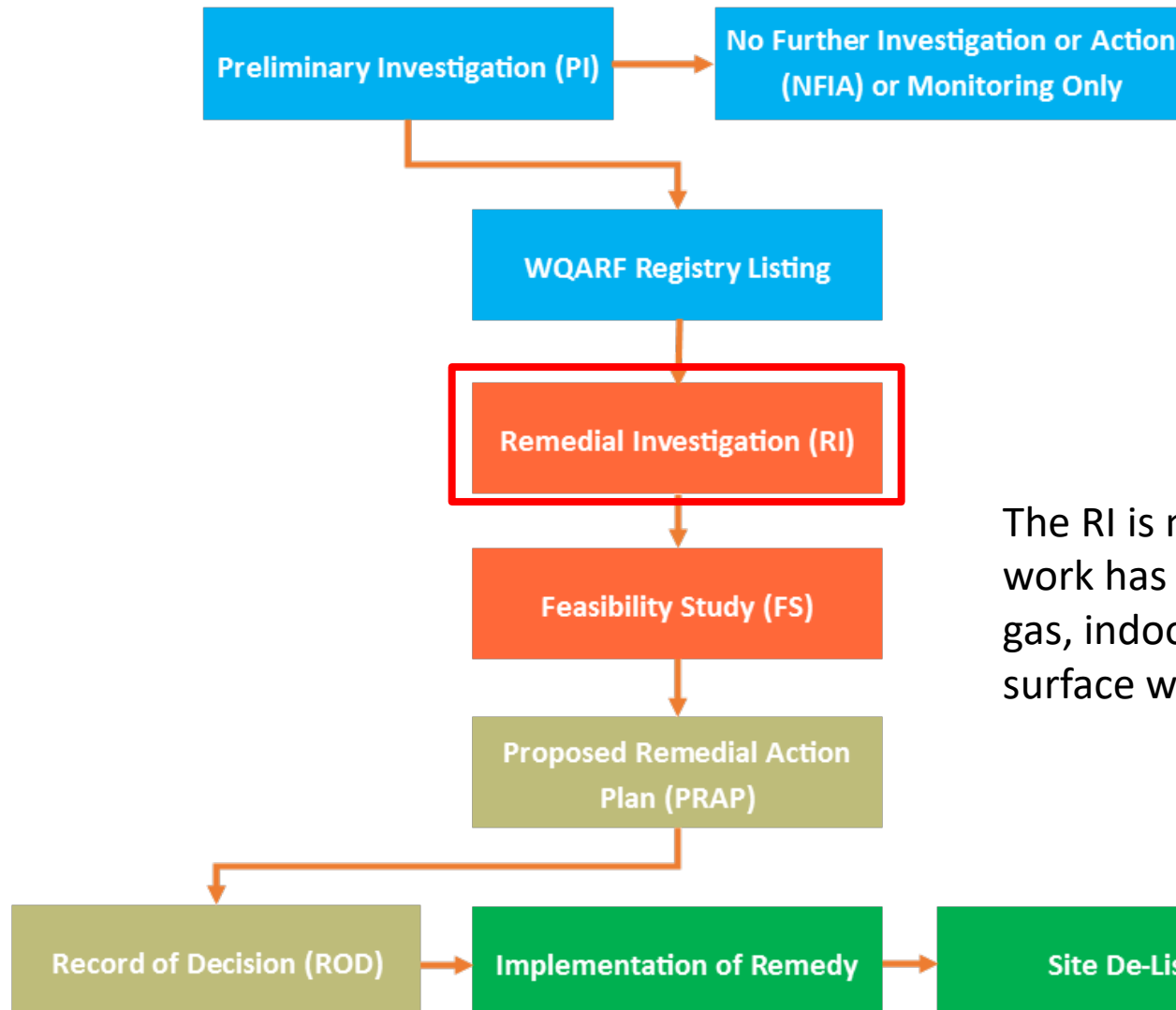


Water Quality Assurance Revolving Fund (WQARF)



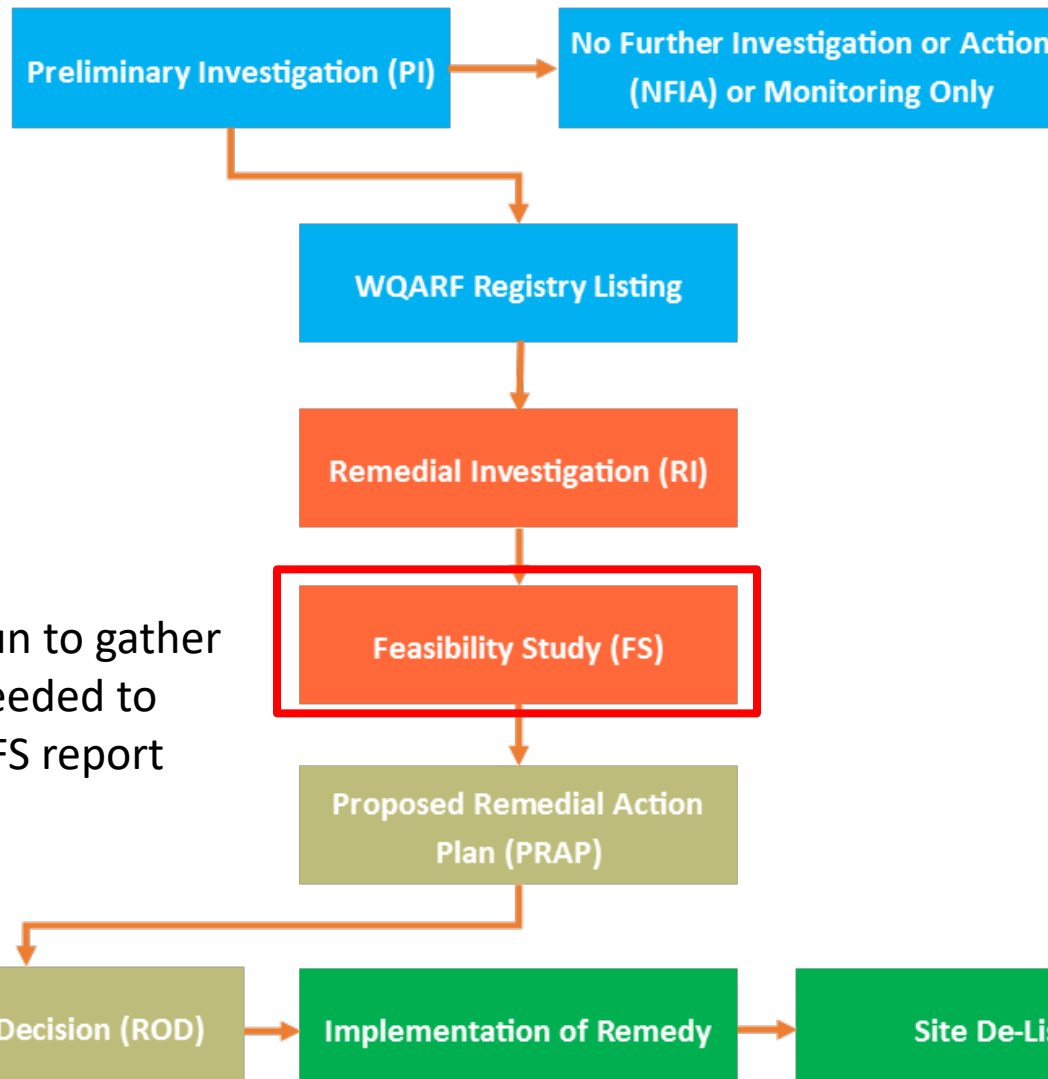
Highway 260 and Main Street
WQARF Site was listed on
December 16, 2016

Water Quality Assurance Revolving Fund (WQARF)



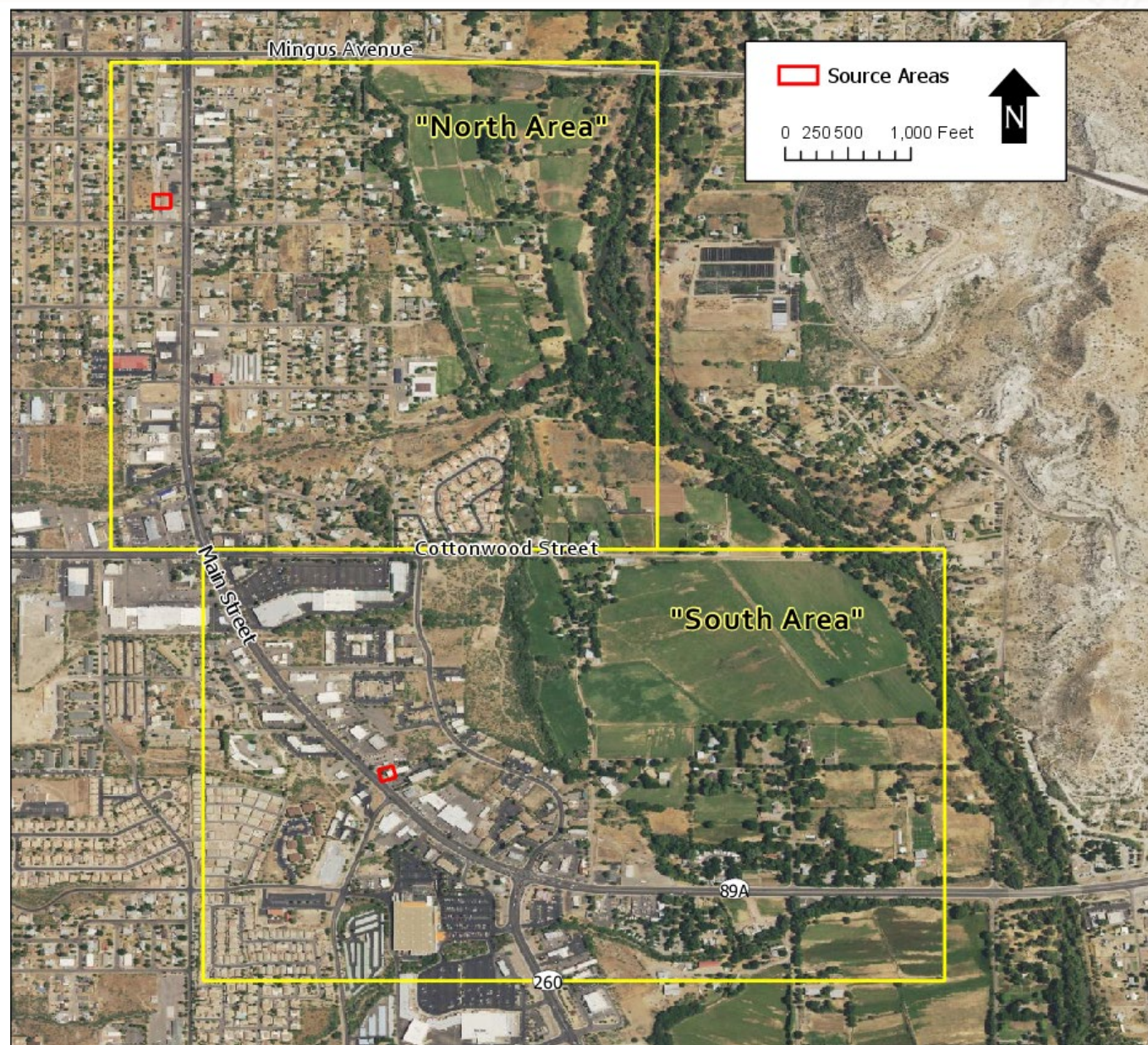
The RI is nearing completion; work has included extensive soil gas, indoor air, groundwater, and surface water sampling

Water Quality Assurance Revolving Fund (WQARF)

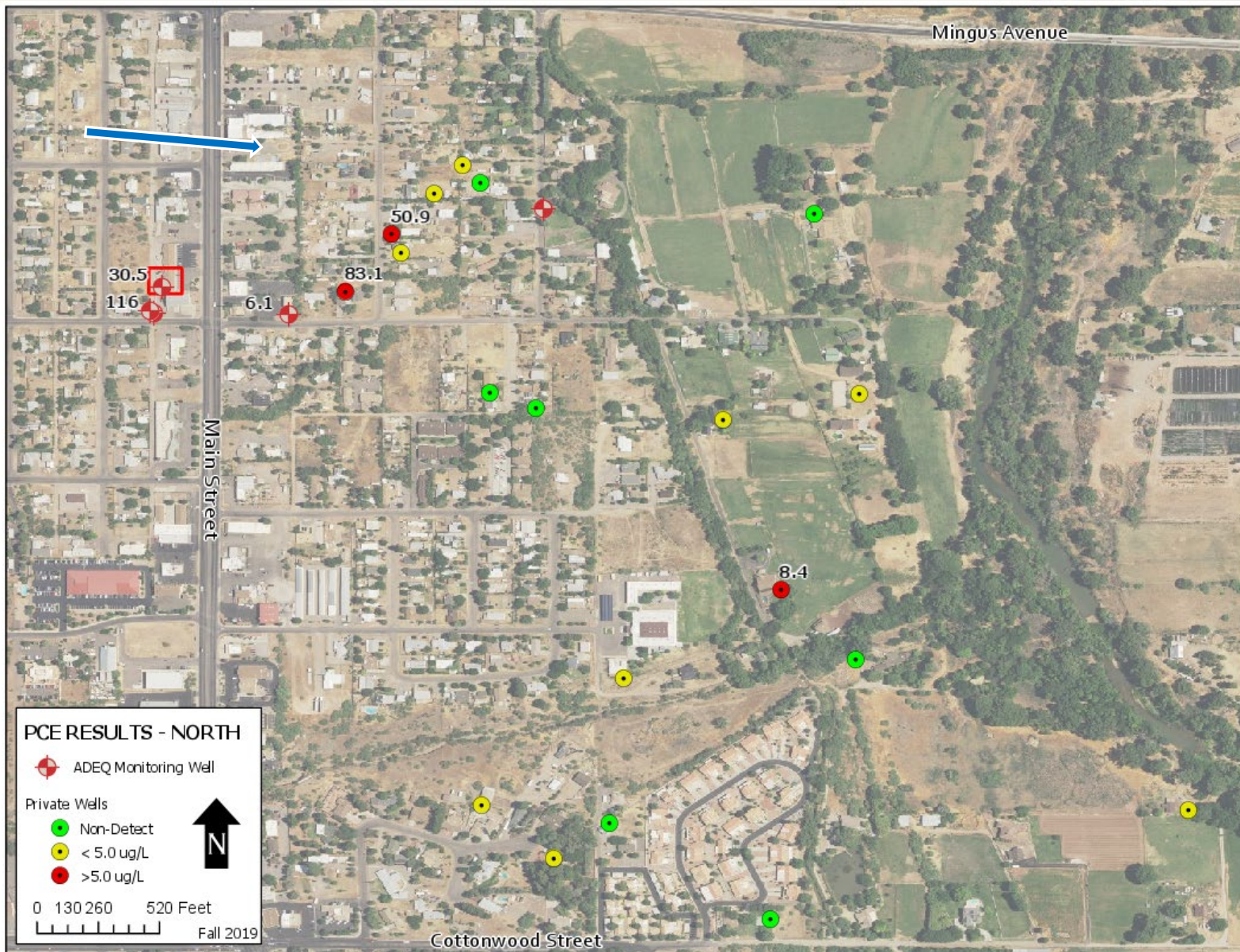


Work has begun to gather information needed to complete the FS report

Site Map



Groundwater Sampling – North Area





Note: Wells with PCE greater than the Aquifer Water Quality Standard of 5.0 micrograms per liter (ug/L) are labeled with the PCE concentration in units of ug/L

Groundwater Sampling – South Area



Note: Wells with PCE greater than the Aquifer Water Quality Standard of 5.0 micrograms per liter (ug/L) are labeled with the PCE concentration in units of ug/L

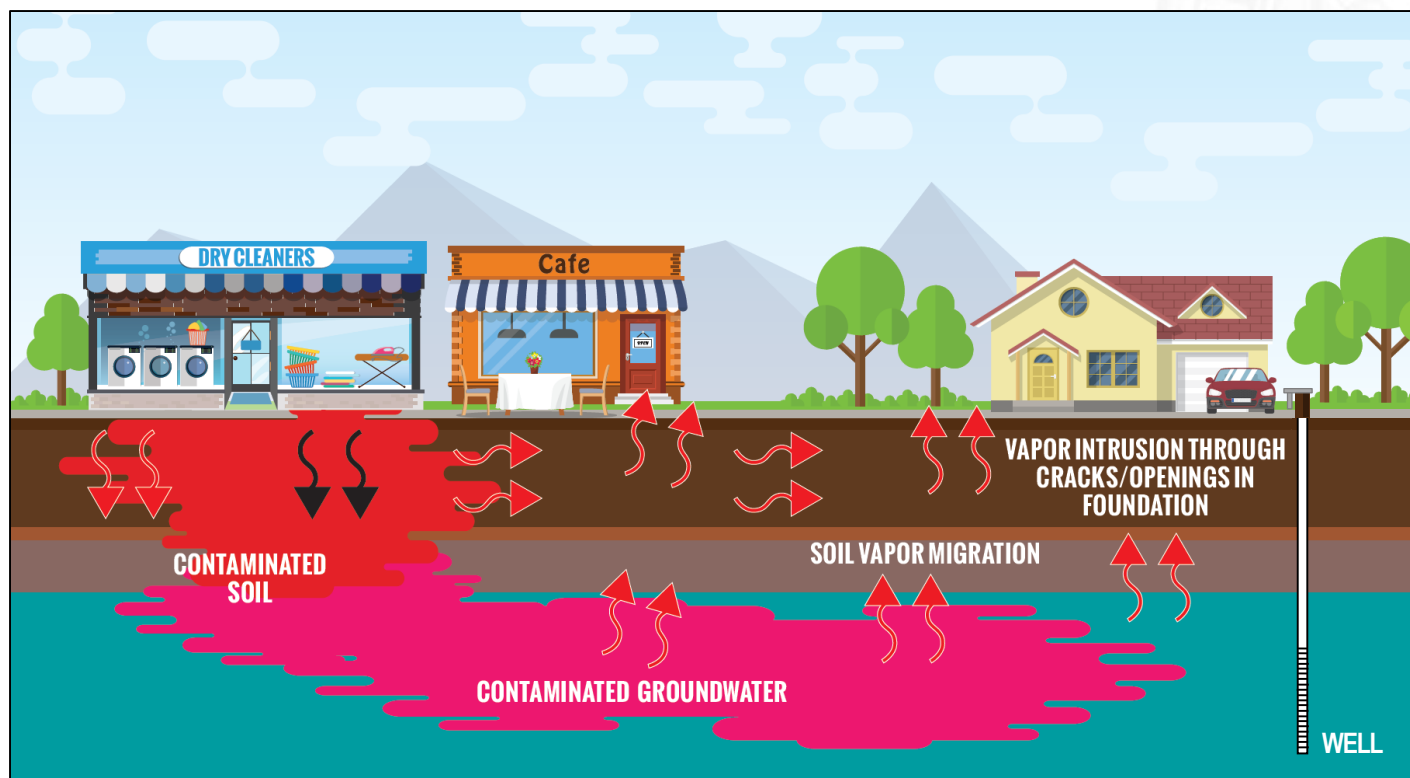
 Approximate Groundwater Flow Direction
 Approximate Groundwater Source Area

- ADEQ has provided bottled water to affected residents when necessary, as an interim measure to prevent exposure to PCE
- In 2018, ADEQ began installing wellhead treatment systems at affected wells as part of an Early Response Action
- ADEQ also assisted in getting a public water system connected to municipal water supply

- Treatment systems installed by ADEQ provide effective whole-house treatment using carbon filtration
- Recently, two additional systems were installed based on groundwater sampling results and existing systems were upgraded to increase reliability
- In March 2020, ADEQ will upgrade an existing treatment system at a public water system well
- An operations and maintenance (O&M) plan will be published following completion of all installations and upgrades








Conceptual Model of a Contaminated Site



- Contamination near the point of release acts as a continuing source to soil gas and groundwater
- Source area remediation is necessary to prevent further migration of contaminants

- In January 2020, five additional wells were installed near the suspected source in the “North Area” to better characterize the source area contamination

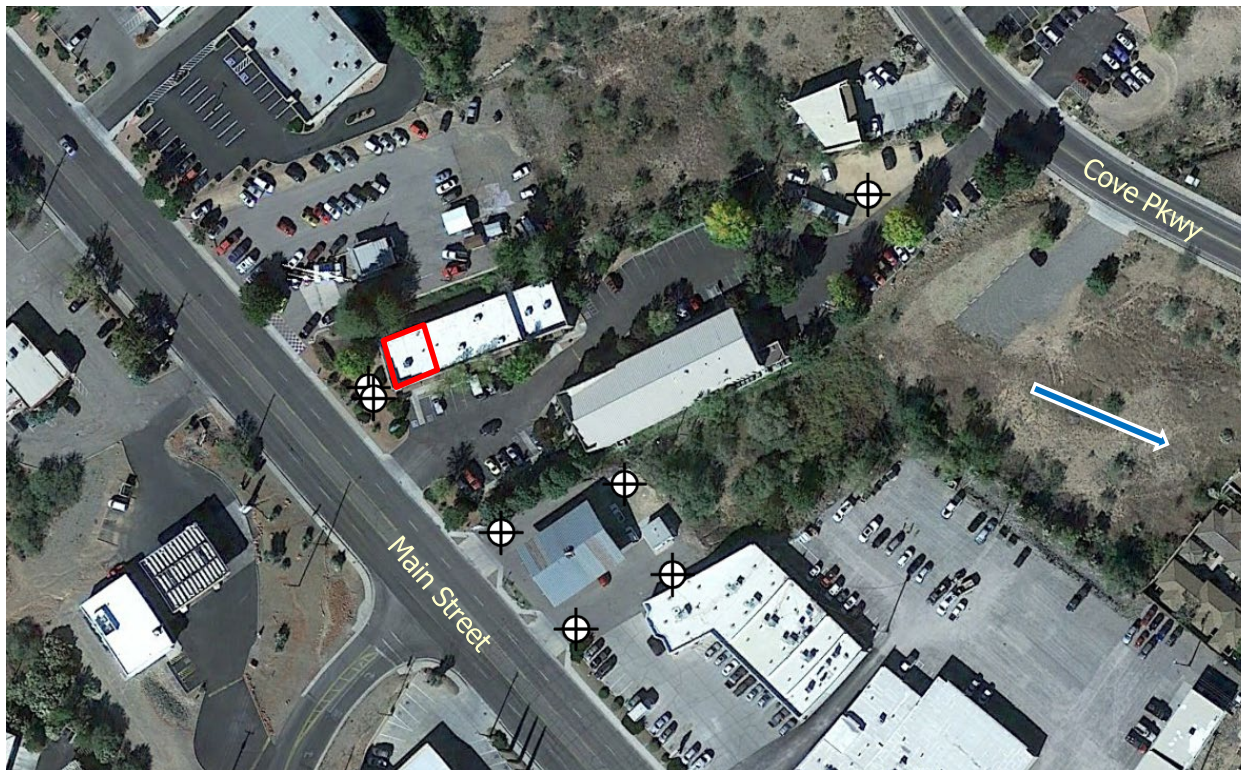


-  Groundwater Monitoring Well
-  Soil Vapor Extraction Well
-  Vapor Monitoring Well
-  Suspected Source
-  Approximate Groundwater Flow Direction

- Groundwater will be monitored for several parameters to determine the feasibility of in-situ treatment methods, including enhanced bioremediation
- A soil vapor extraction (SVE) pilot test will be conducted to determine the feasibility of using SVE for site remediation



- Additional characterization is required near the suspected source in the “South Area” before feasibility study screening can be conducted – property access is being negotiated



- ⊕ Existing Groundwater Monitoring Well Installed in 2018 or prior
- Suspected Source
- ➡ Approximate Groundwater Flow Direction

- A draft Remedial Investigation report is expected soon
- A soil vapor extraction (SVE) pilot test will be conducted in March near the suspected source in the “North Area”
- Access negotiations are ongoing to complete the feasibility study as soon as possible.
- The publication of the FS report is dependent on access to key properties

Contact Us!

Matt Narter, Project Manager

(520) 770-3128

(800) 234-5677 ext. 5207703128

narter.matthew@azdeq.gov

Barbara Boschert, Community Involvement Coordinator

(602) 771-8149

(800) 234-5677 ext. 6027718149

boschert.barbara@azdeq.gov



Questions?