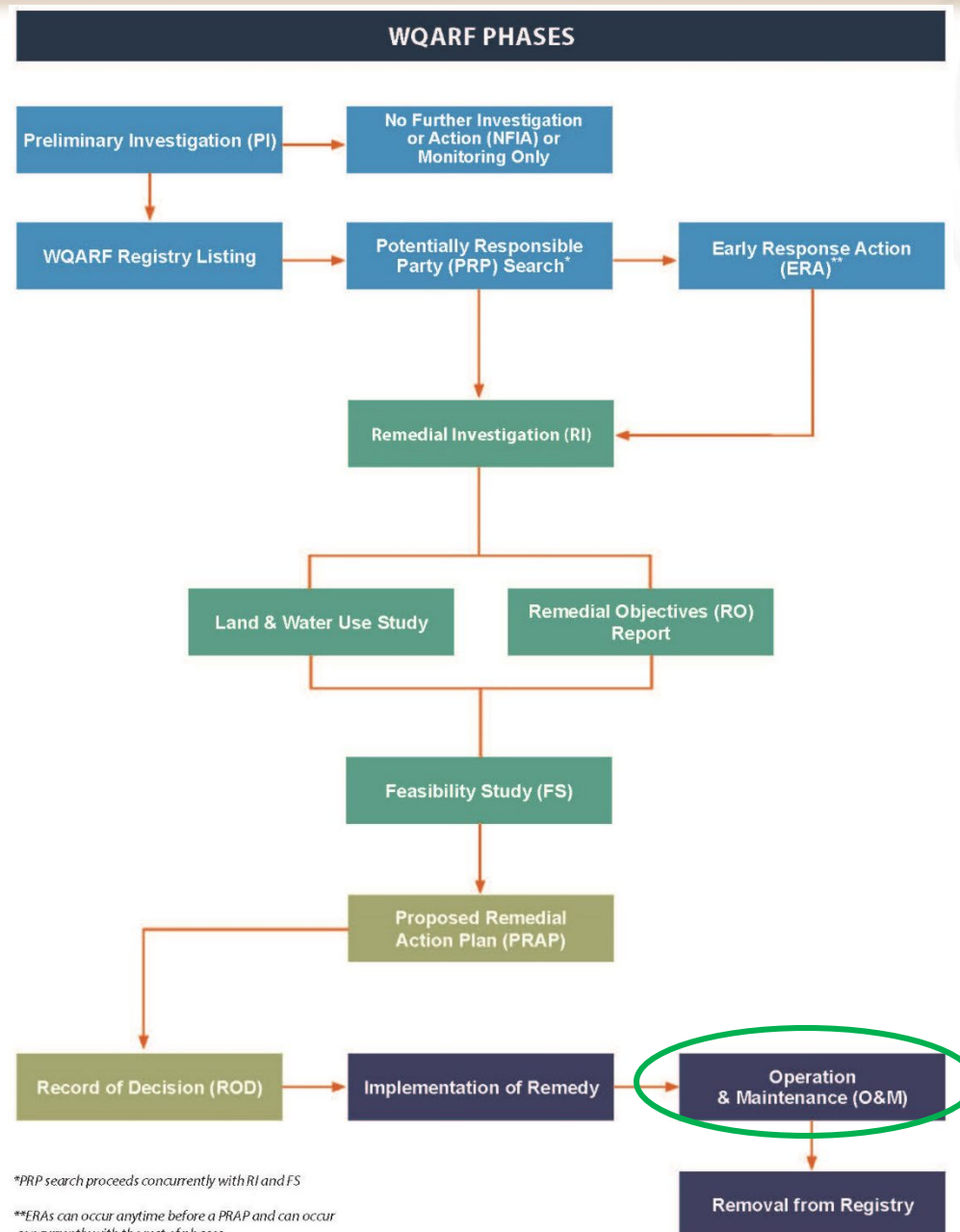


Cooper Road and Commerce Avenue
Water Quality Assurance
Revolving Fund (WQARF) Site

Community Advisory Board (CAB) Meeting
12 September 2023

WQARF Process

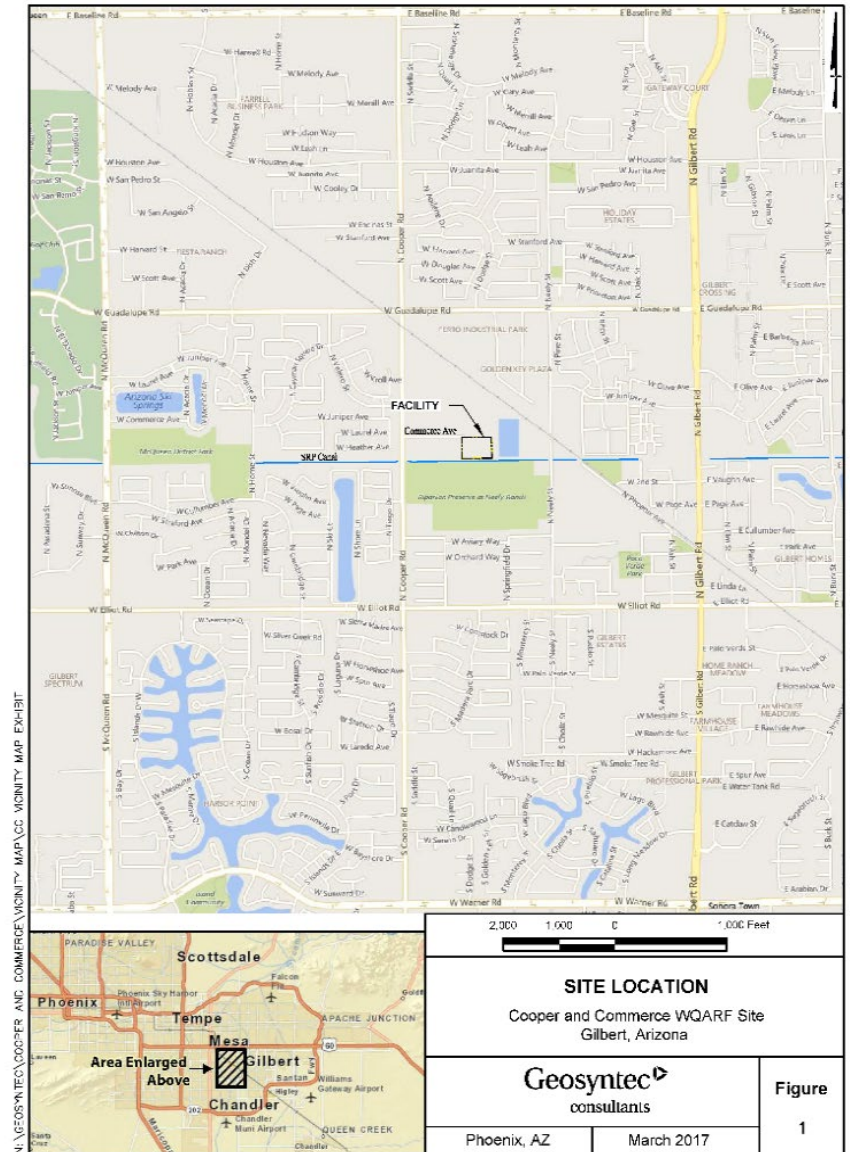


*PRP search proceeds concurrently with RI and FS

**ERAs can occur anytime before a PRAP and can occur concurrently with the rest of phases

Presentation Outline

- 2023 groundwater monitoring
- Current soil vapor extraction (SVE) results
- Plans for fiscal year 2024



- **Groundwater Monitoring Results**
 - 18 monitoring wells included
 - Groundwater flow to west northwest
 - Tetrachloroethene (PCE)
 - ❖ Aquifer Water Quality Standard (AWQS) = 5 micrograms per liter ($\mu\text{g/L}$)
 - ❖ Results ranged from 0.30 (MW-115) to 22 (MW-102) $\mu\text{g/L}$
 - Trichloroethene (TCE):
 - ❖ AWQS = 5 $\mu\text{g/L}$
 - ❖ All results below AWQS



April 2023 Groundwater Monitoring



Legend

- ◆ South Mesa Monitoring Well
- ◆ Cooper and Commerce Monitoring Well
- ◆ Well Not Sampled
- Contours (0.5 ft)
- Groundwater Flow Direction
- Cooper and Commerce Source Area

Notes:

- MW-113** Groundwater Monitoring Well Identification
- 1117.98** Groundwater Elevation (ft amsl)
- ft** feet
- amsl** above mean sea level
- WQARF** Water Quality Assurance Revolving Fund



Spring 2023
Groundwater Monitoring Report
Cooper and Commerce WQARF
Gilbert, Arizona

Figure
2 **April 12, 2023
Groundwater Elevations**

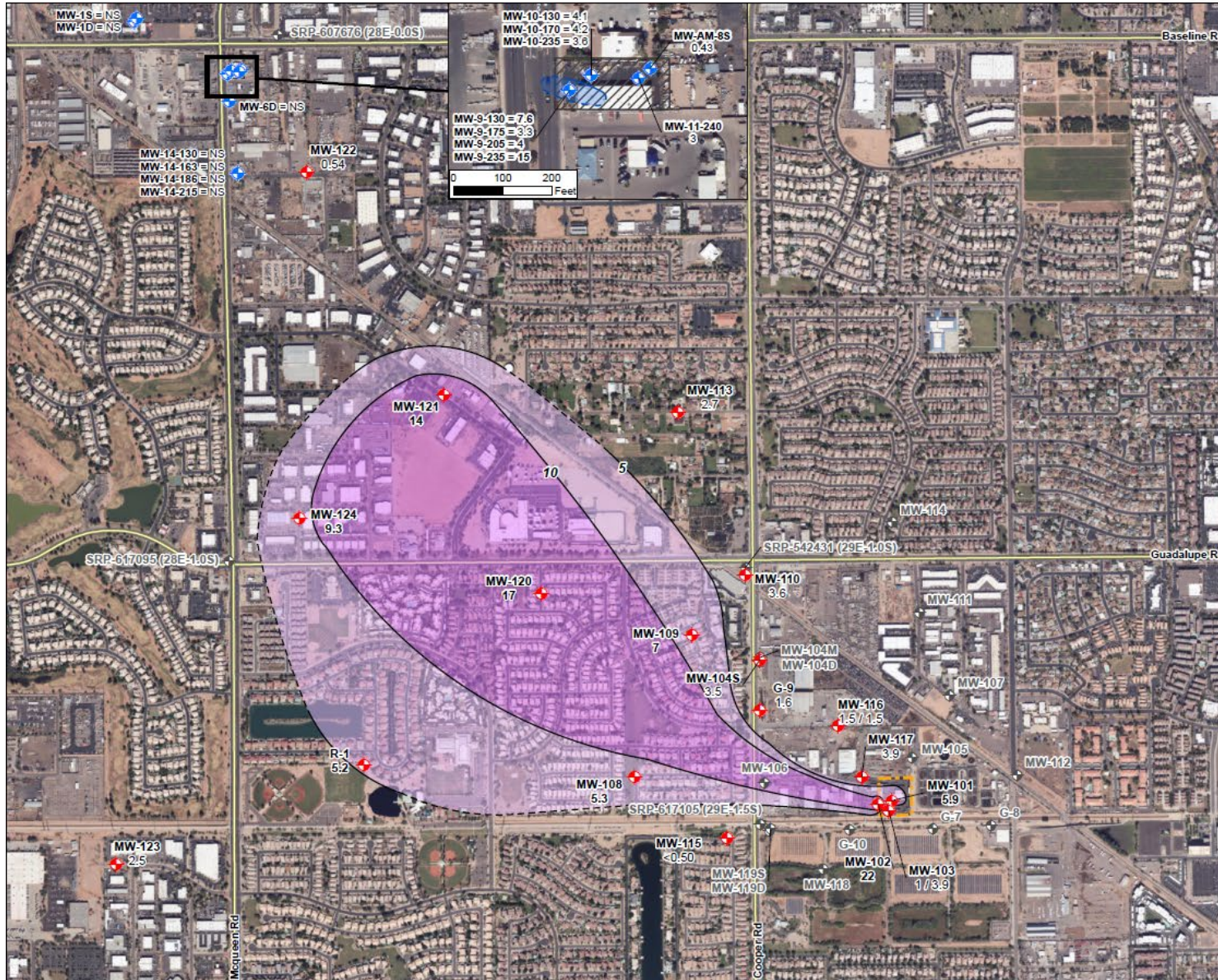
Job No. 1420222022
PM: SO
Date: 6/12/2023
Scale: 1" = 200'



The map shown here has been created with all due and reasonable care and is a liability for use without WSP USA Project Number 1420222022. The map has not been certified by a licensed land surveyor, and any third party use of the map comes without warranties of any kind. WSP USA assumes no liability, direct or indirect, whatsoever for any such third party or unintended use.



April 2023 Groundwater Monitoring



- Legend**
- ◆ Cooper & Commerce Monitoring Well
 - ◆ South Mesa Monitoring Well
 - ◆ Well Not Sampled
 - Cooper and Commerce Source Area
 - Former Applied Metal Facility
- South Mesa Approximate Distribution of PCE Above 5.0 $\mu\text{g/L}$ (Dash Where Inferred)**
- 5.0 $\mu\text{g/L}$
 - 5 $\mu\text{g/L}$
 - 10 $\mu\text{g/L}$

- Notes:**
- MW-108** Monitoring Well Identification
 - 5,3** Analytical Result (Results that are **bolded** equal or exceed the AWQS of 5 $\mu\text{g/L}$)
 - 1/3,9** Original Sample/Duplicate Sample
 - NS** Not Sampled
 - J** The analyte was positively identified; the associated numerical value is the approximate concentration of the analyte in the sample
 - $\mu\text{g/L}$ Micrograms per liter
 - PCE** Tetrachloroethene
 - AWQS** Aquifer Water Quality Standards
 - WQARF** Water Quality Assurance Revolving Fund



Spring 2023
Groundwater Monitoring Report
Cooper and Commerce WQARF
Gilbert, Arizona

Figure 3 **Spring 2023
Upper Alluvial Unit
Regional PCE Distribution**

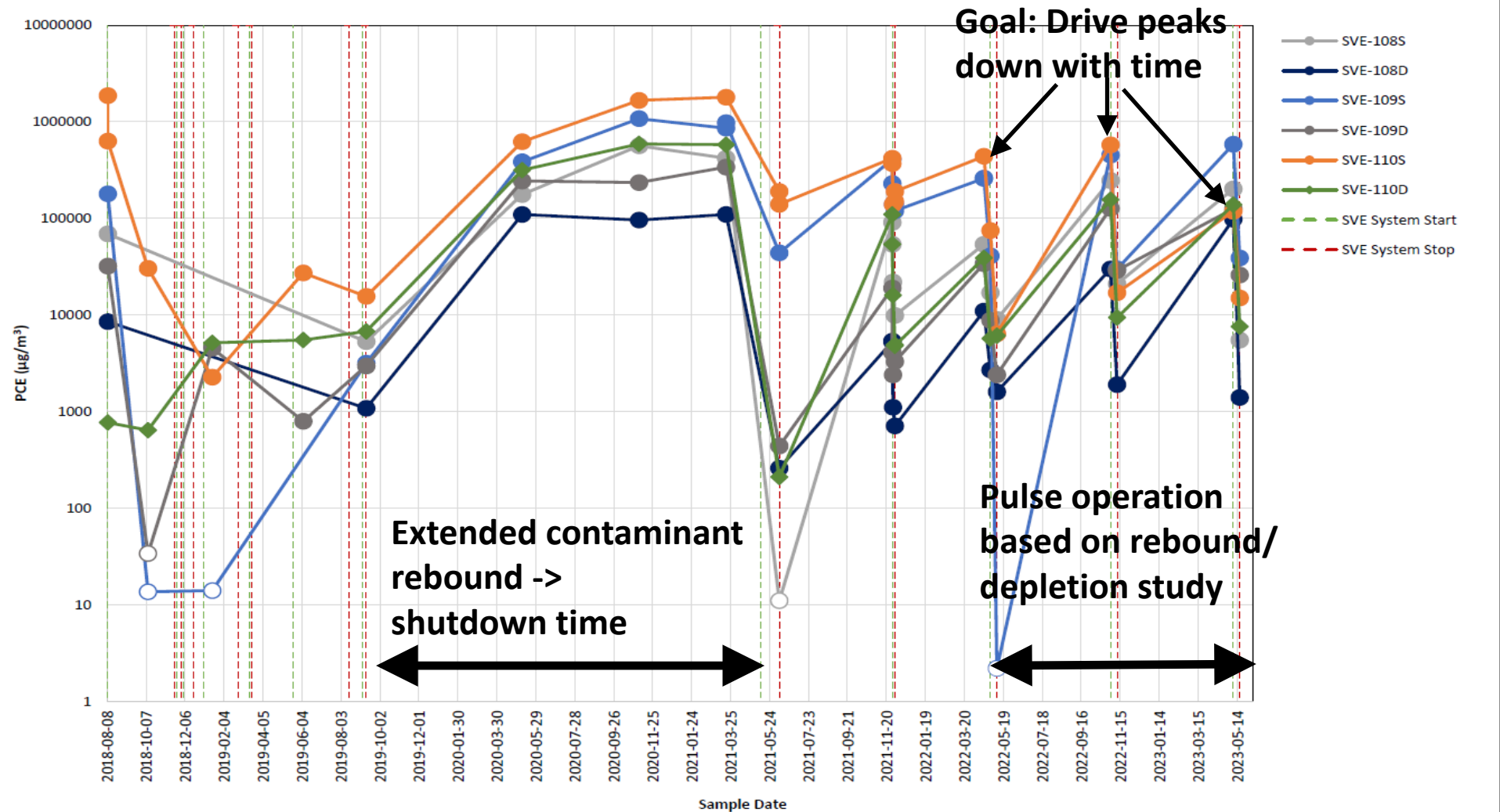
Job No. 14-2022-2022	
PM: SO	
Date: 5/19/2023	
Scale: 1" = 1000'	

The map shown here has been created with all due and reasonable care and is intended for use with WSP USA Project Number 14-2022-2022. This map has not been certified by a licensed land surveyor, and any third party use of this map comes without warranties of any kind. WSP USA assumes no liability, direct or indirect, whatsoever for any such third party or unlicensed use.

- Pulse operation
 - 10-day operation periods:
 - November 2022
 - May 2023
 - Vapor sampling at beginning and end of operation



SVE System Operation



Notes:
 Non-detect concentrations are reported to the reporting limit and are identified with a white fill.
 PCE - Tetrachloroethene
 SVE - Soil Vapor Extraction
 µg/m3 - micrograms per cubic meter
 WQARF - Water Quality Assurance Revolving Fund

**Time-Series Plot of Soil Vapor PCE Concentrations
 Source Area SVE Wells**

Cooper and Commerce WQARF Site
 Arizona Department of Environmental Quality
 Gilbert, Arizona

Geosyntec[®]
 consultants

Phoenix June 2023

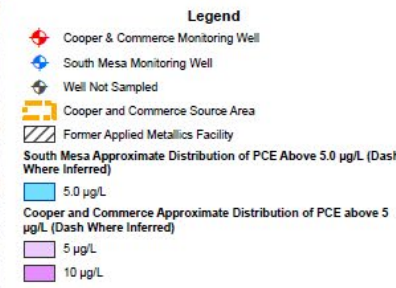
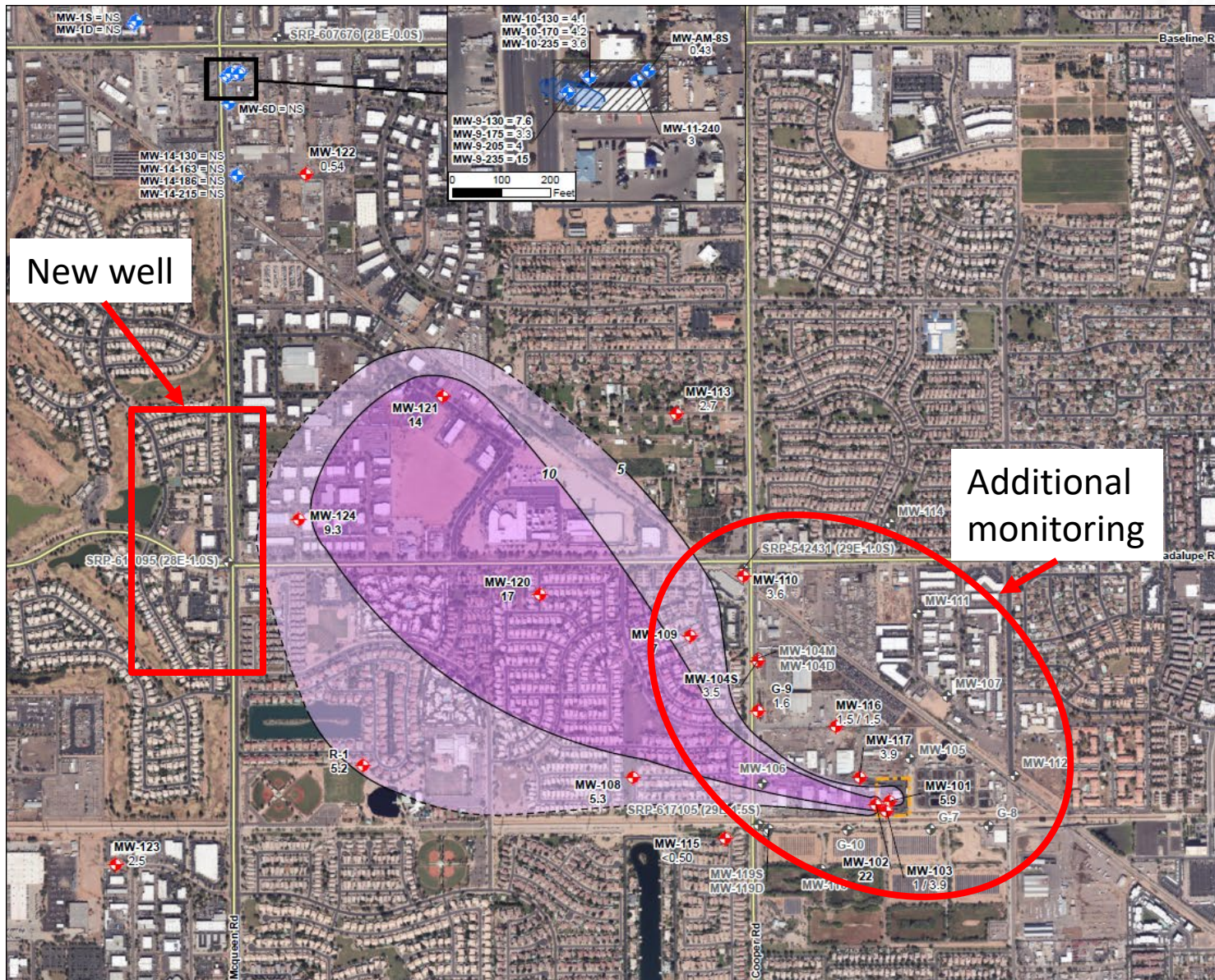
Figure
 2

- Groundwater
 - Expanded monitoring event
 - Monitoring well installation
- Soil
 - Continued SVE pulse operation



Well Installation

Planned Activities



Notes:

MW-108 Monitoring Well Identification

5,3 Analytical Result (Results that are **bolded** equal or exceed the AWQS of 5 µg/L)

1/3,9 Original Sample/Duplicate Sample

NS Not Sampled

J The analyte was positively identified; the associated numerical value is the approximate concentration of the analyte in the sample

µg/L Micrograms per liter

PCE Tetrachloroethene

AWQS Aquifer Water Quality Standards

WQARF Water Quality Assurance Revolving Fund



Spring 2023
Groundwater Monitoring Report
Cooper and Commerce WQARF
Gilbert, Arizona

Figure 3

**Spring 2023
Upper Alluvial Unit
Regional PCE Distribution**

Job No.	14-2022-2022
PM:	SO
Date:	5/19/2023
Scale:	1" = 1000'

The map shown here has been created with all due and reasonable care and is intended for use with WSP USA Project Number 14-2022-2022. This map has not been certified by a licensed land surveyor, and any third party use of this map incurs without warranties of any kind. WSP USA assumes no liability, direct or indirect, whatsoever for any such third party or unapproved use.

- Questions?



Contact Information

Kyle Johnson, Project Manager
Remedial Projects Unit
johnson.kyle@azdeq.gov
602-771-8704, 1-800-234-5677

Adam Nagle, Project Manager
Remedial Projects Unit
nagle.adam@azdeq.gov
602-771-1988, 1-800-234-5677

Barbara Boschert, Community Involvement Coordinator
Remedial Projects Unit
boschert.barbara@azdeq.gov
602-771-8007, 1-800-234-5677

