

Central and Camelback Water Quality Assurance Revolving Fund (WQARF) Registry Site

Community Advisory Board (CAB) Presentation

October 11, 2023

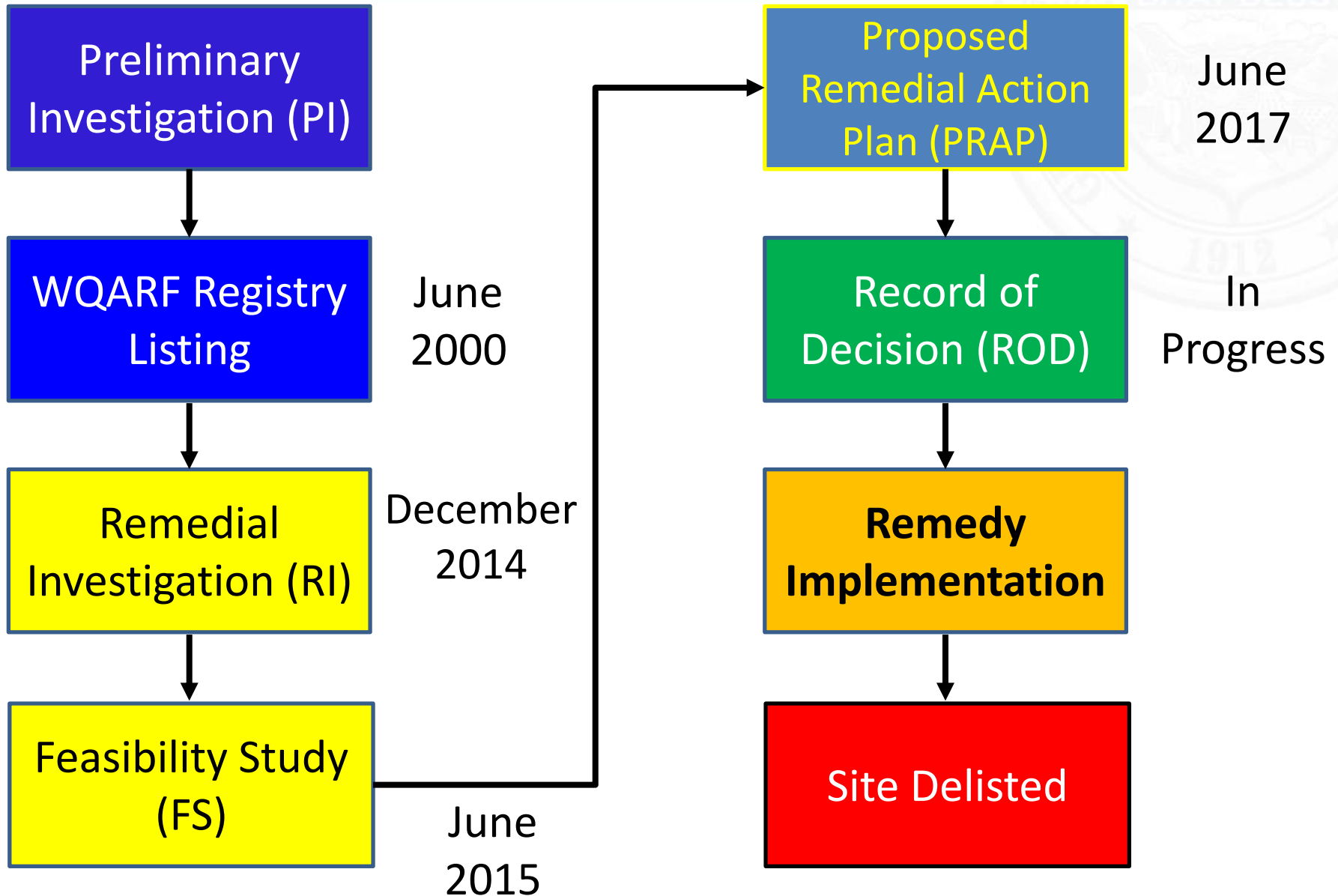
Project Manager: Mikel Morales



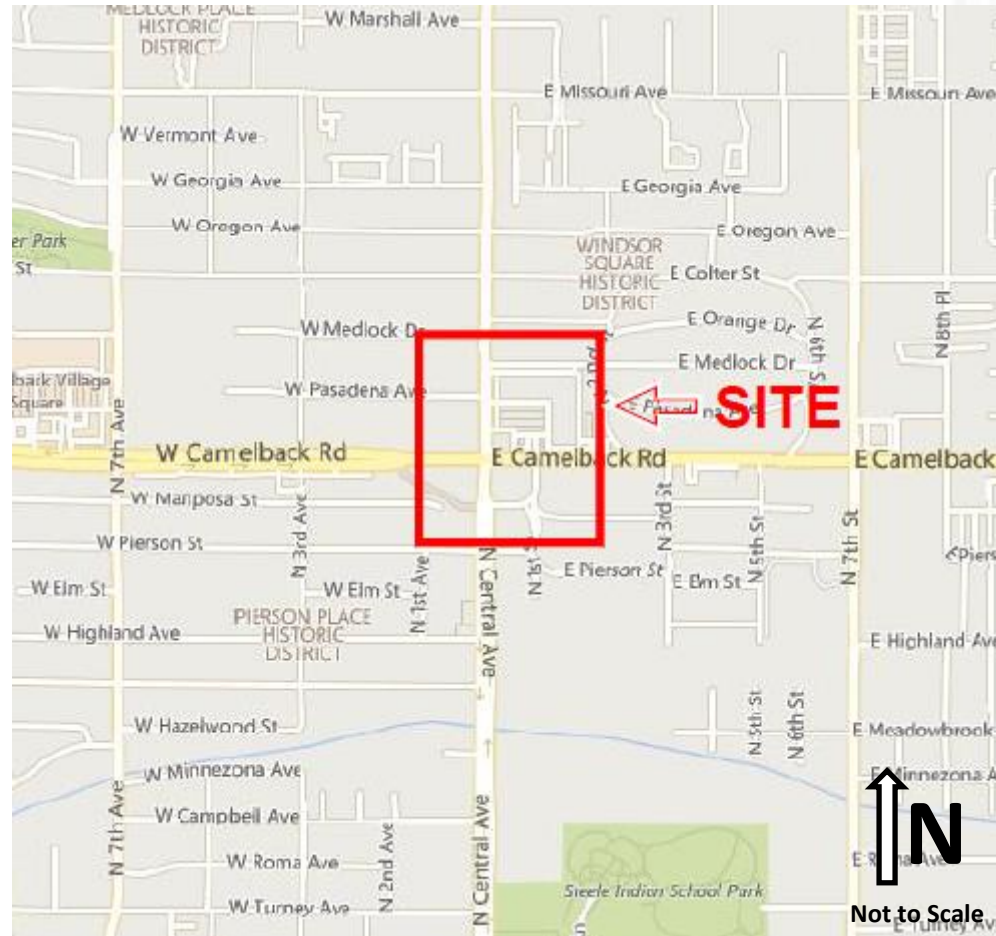
Clean Air, Safe Water,
Healthy Land for Everyone



WQARF Process



Central and Camelback WQARF Site

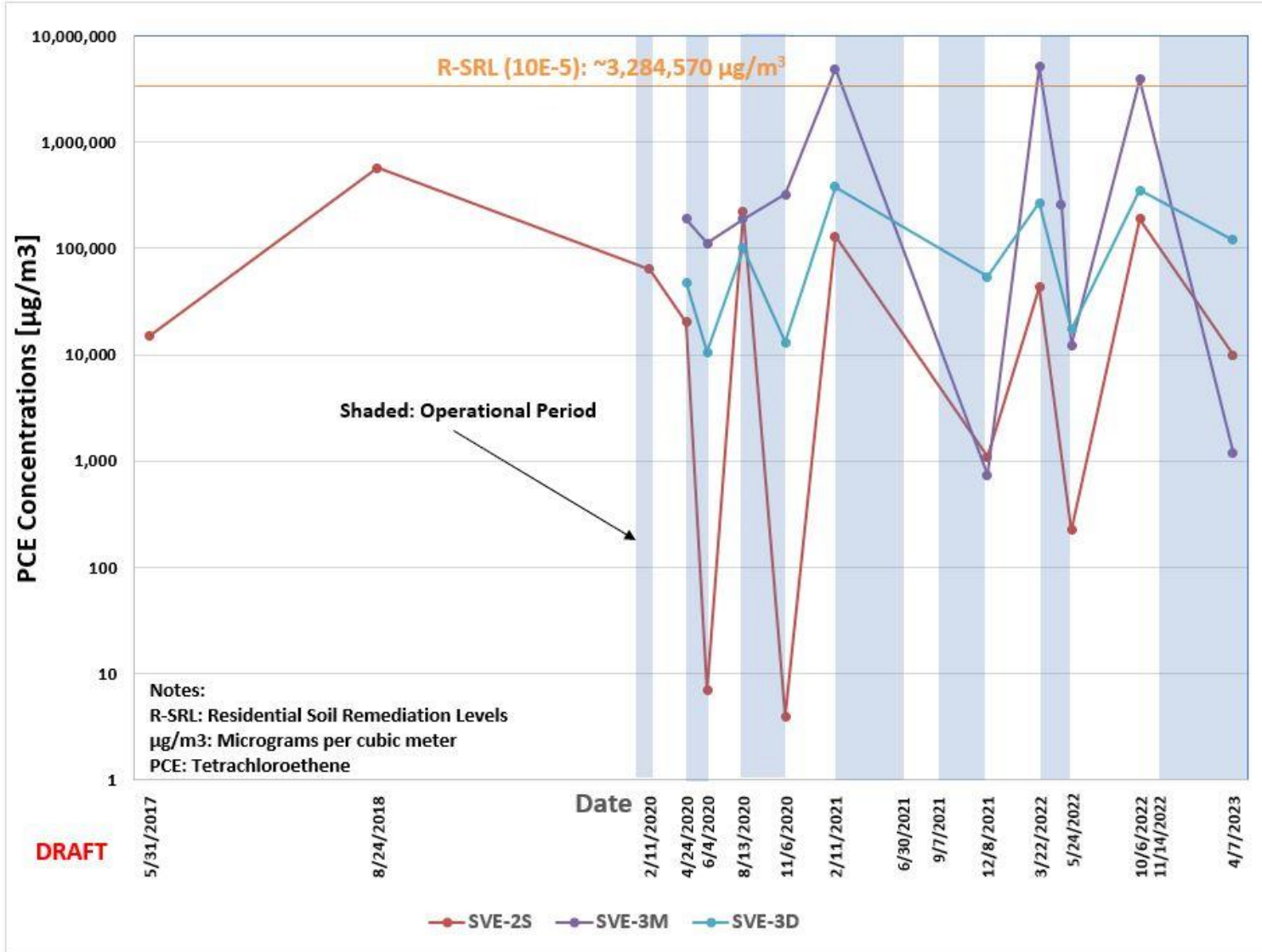


- **Contaminants of Concern** = Tetrachloroethene (PCE) and trichloroethene (TCE)
- **Source of Contamination** = Former dry-cleaning facility
- **Current Impacted Media** = Groundwater and soil
- **Potential Receptors** = Salt River Project water supply well

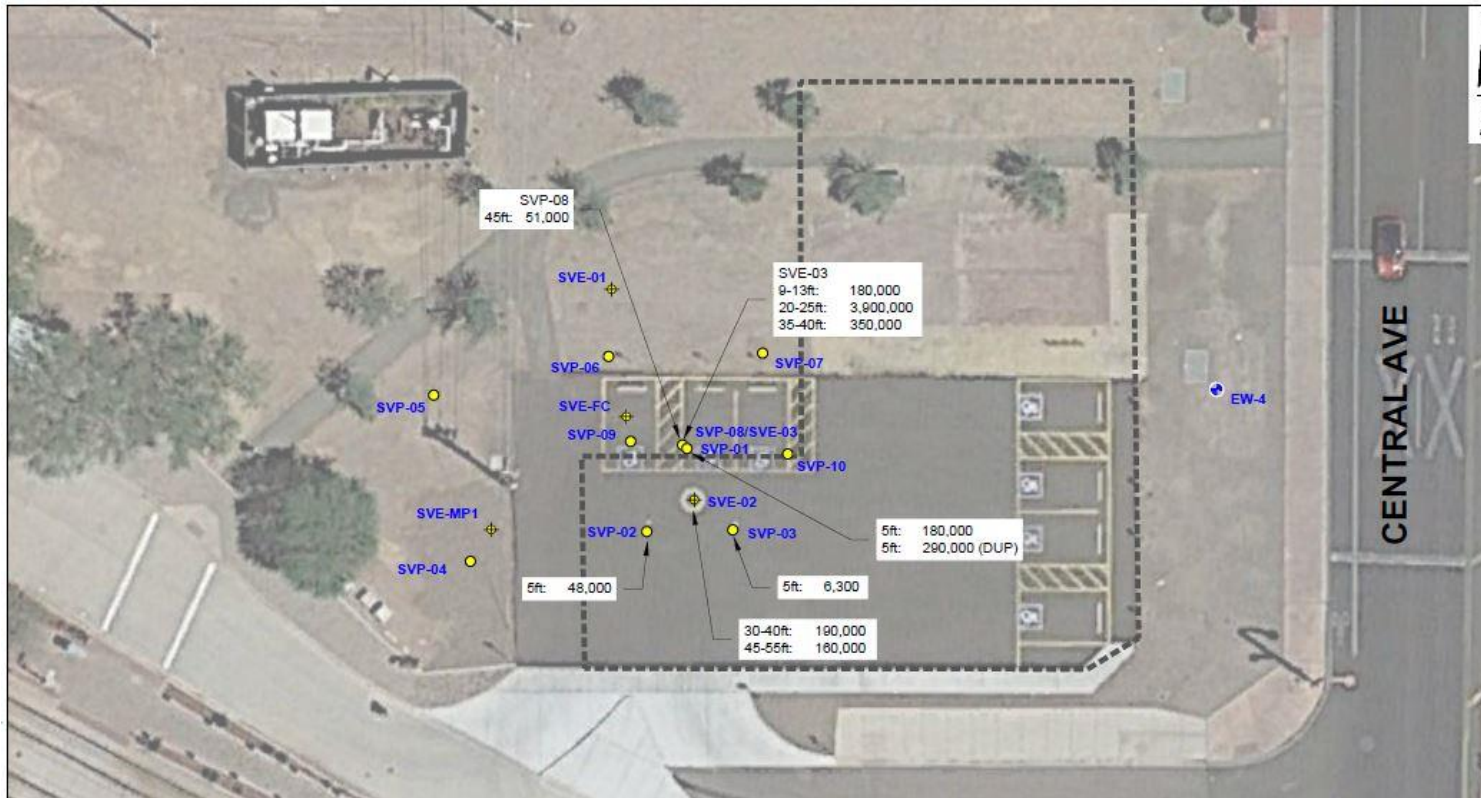
- Ozone Sparge System
 - In Situ Chemical Oxidation (ISCO) Technology
 - Six injection wells installed in the vadose zone
 - Commissioned in November 2022
 - Intermittent operation due to operational challenges
 - Restarted in September 2023 3-month operation period

- Soil Vapor Extraction (SVE)
 - Pulse Operation
 - System restarted November 2022
 - Minor downtime during operational period
 - Scheduled to shutdown at end of current ozone sparge operation period
 - Soil Gas Sampling
 - October 2022 [Rebound Monitoring]
 - December 2022 [Performance Monitoring]
 - March 2023 [Performance Monitoring]
 - April 2023 [Performance Monitoring]

Soil Gas PCE Concentration Trends



October 2022 Rebound Monitoring



NOT TO SCALE

LEGEND

-  Groundwater Well
 -  Soil Vapor Probe
 -  SVE Well
 -  Former Building Footprint
 - EW - Extraction Well
 - MW - Monitor Well
 - SVE - Soil Vapor Extraction
 - SVP - Soil Vapor Probe
 - 5ft - Depth Below Ground Surface in Feet
 - 5,100 - Concentration Level
 - Dup - Duplicate Sample
- All concentrations are Tetrachloroethene (PCE) in micrograms per cubic meter

**RESULTS OF SOIL VAPOR MONITORING
OCTOBER 2022**

Central and Camelback WQARF Site
Phoenix, AZ



Figure

4

Phoenix, AZ

June 2023

- **Semiannual Groundwater Monitoring**

COC Concentrations			
Constituent	Detection Range [µg/L]	AWQS [µg/L]	Wells Above AWQS
PCE	0.45 – 5.3	5	CC-4
TCE	0.217 – 5.39	5	CC-18

* Semiannual sampling performed in October 2022 and April 2023

COC – Contaminant of Concern

µg/L – micrograms per liter

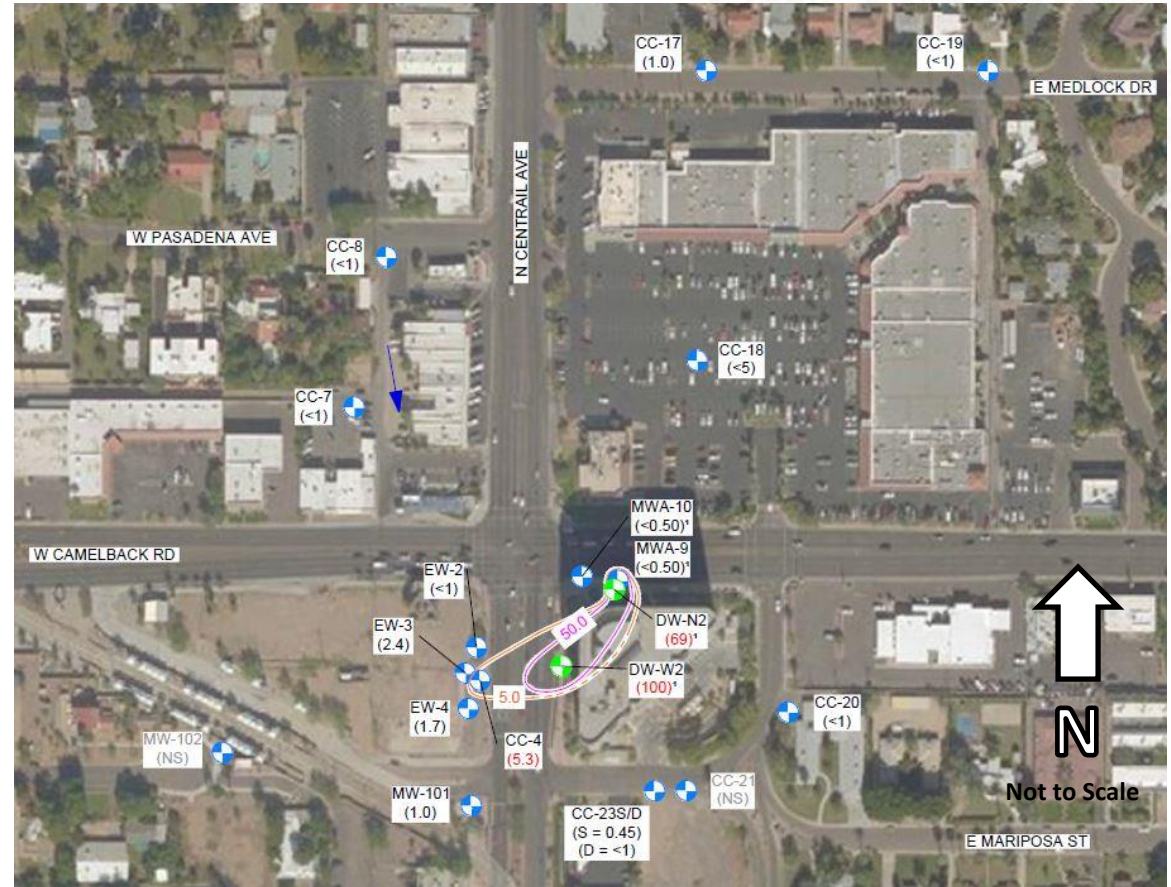
AWQS – Aquifer Water Quality Standard

- **System Decommissioning**

- Decommissioned Groundwater Extraction Treatment System in September 2022

PCE Concentration Figure – April 2023

- PCE detected above the AWQS of 5 $\mu\text{g/L}$ in one monitoring well (CC-4).
- Concentrations and contours presented in units of $\mu\text{g/L}$.
- March 2019 dewatering well concentrations used for contouring.



- TCE detected above the AWQS of 5 $\mu\text{g/L}$ in one monitoring well (CC-18).
- Concentrations and contours presented in units of $\mu\text{g/L}$.
- March 2019 dewatering well concentrations used for contouring.

TCE Concentration Figure – April 2023



- **Soil Remediation**
 - Continued Pulse SVE Operation
 - Complete Ozone Sparge Pilot Study
- **Groundwater Remediation**
 - Routine Semiannual Groundwater Monitoring
- **Finalize Record of Decision**



Thank you! Questions?



**Clean Air, Safe Water,
Healthy Land for Everyone**

ADEQ Community Involvement Coordinator

Barbara Boschert

Boschert.Barbara@azdeq.gov

602.771.8007

ADEQ Project Manager

Mikel Morales

Morales.Mikel@azdeq.gov

602.771.4182

