

16th Street and Camelback
Water Quality Assurance
Revolving Fund (WQARF) Sites
Community Advisory Board
(CAB) Presentation

March 21, 2018

Wendy Flood, Community Involvement Coordinator
Eric Mannlein, Project Manager





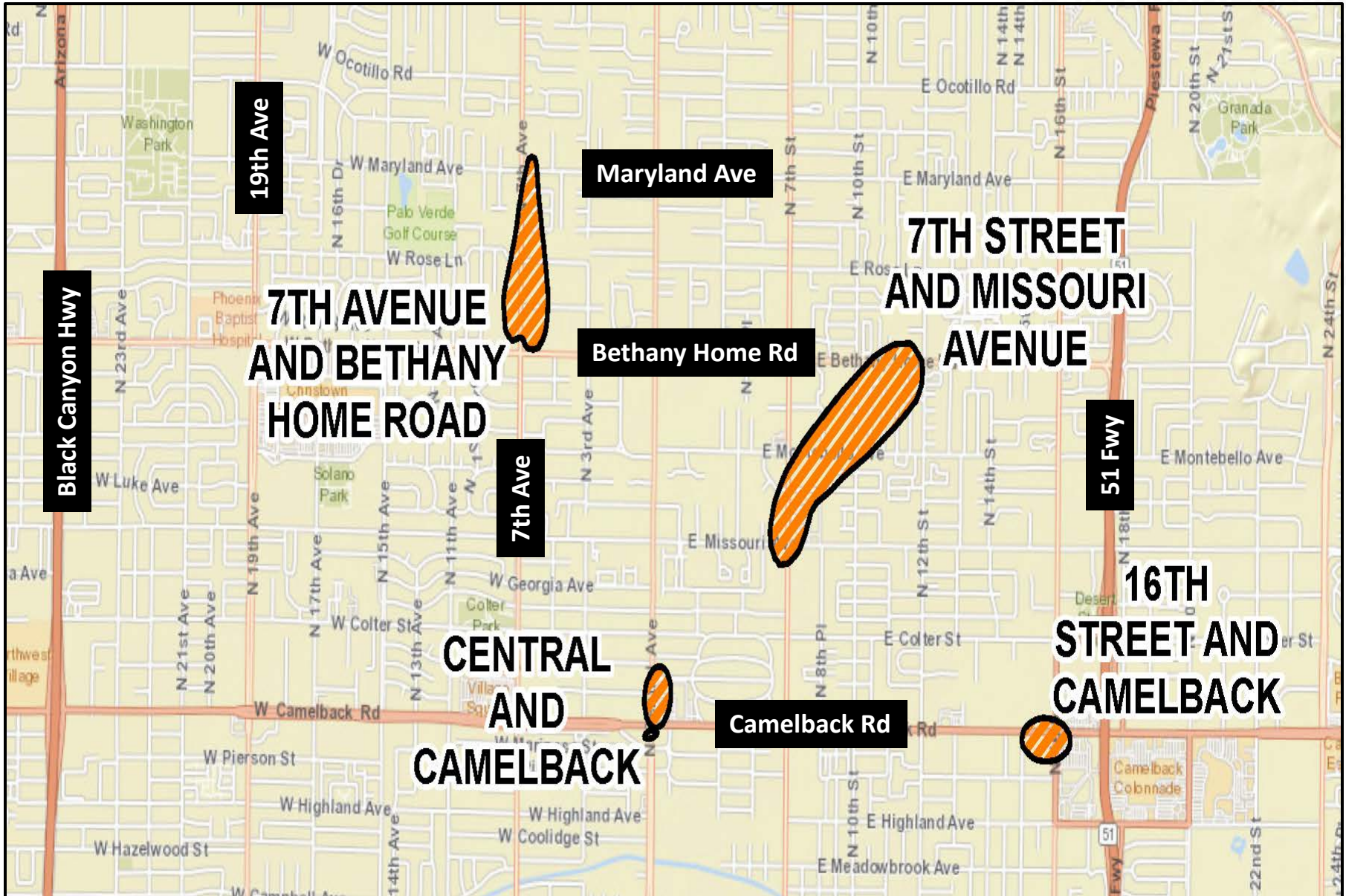
WQARF PHASES



**PRP search proceeds concurrently with RI and FS*

***ERAs can occur anytime before a PRAP and can occur concurrently with the rest of phases*

Central Phoenix WQARF Sites



16th Street and Camelback ROD O&M



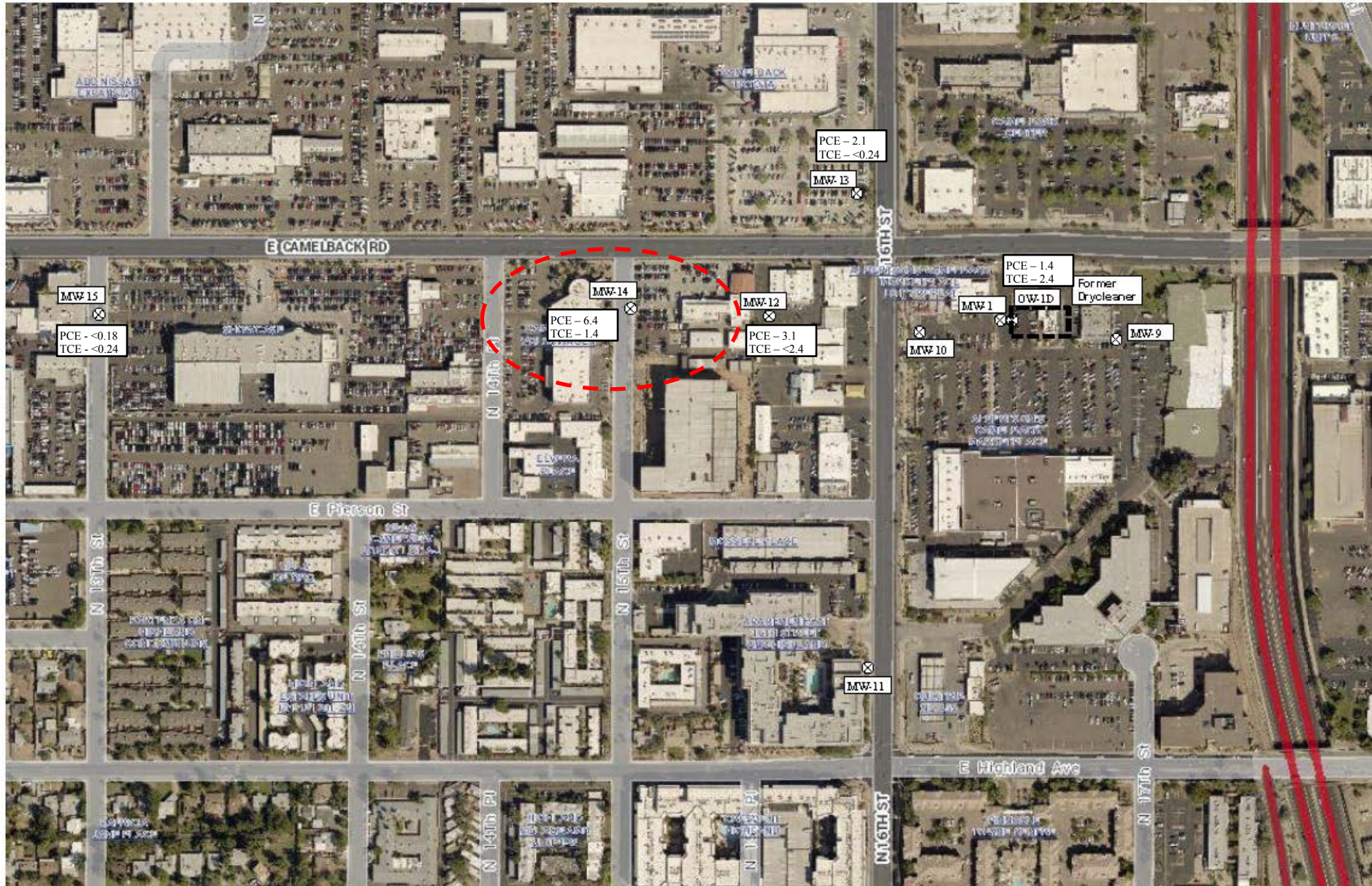
- Conducted groundwater sampling in October 2017.
- Conducted enhanced reductive de-chlorination (ERD) injection to continue expedition of contaminant remediation in January 2018. ERD is included as a contingency in Record of Decision (ROD).
- Conducted microbial substrate injection to enhance the population of the dechlorinating microbes.
- Abandoned monitor wells no longer needed for groundwater monitoring and sampling in January 2018.

Historical and Current Contaminant Data

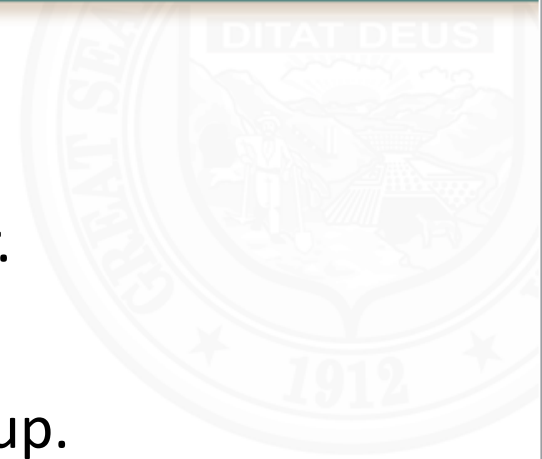
- PCE is currently the only contaminant of concern detected in groundwater at the site at concentrations greater than the Aquifer Water Quality Standard (AWQS) of 5 micrograms per liter (ug/L).

Contaminant	December 1999	August 2007	April 2014	February 2015	April 2016	May 2017	October 2017
PCE	160 ug/l	20 ug/l	11.4 ug/l	25.2? ug/l	16 ug/l	7.0 ug/l	6.4 ug/l
1,2-DCA	400 ug/l	<2.0 ug/l	0.62 ug/l	<0.5 ug/l	<0.5 ug/l	<0.5 ug/l	<2.0 ug/l
1,2-DCP	15 ug/l	<2.0 ug/l	<0.5 ug/l	<0.5 ug/l	<0.5 ug/l	<0.5 ug/l	<2.0 ug/l

Recent Activities



- Continue to monitor and sample groundwater.
- Continue ERD injections for accelerated cleanup.



Questions?



Contacts

Wendy Flood, Community Involvement Coordinator
Remedial Projects Section

ww1@azdeq.gov

(602) 771-4410, 1-800-234-5677 ext 7714410

Eric Mannlein, Project Manager
Remedial Projects Unit

em7@azdeq.gov

(602) 771-0390, 1-800-234-5677 ext. 771-0390

Scott Green, Unit Manager
Remedial Projects Unit

srg@azdeq.gov

(602) 771-1612, 1-800-234-5677 ext. 771-1612

