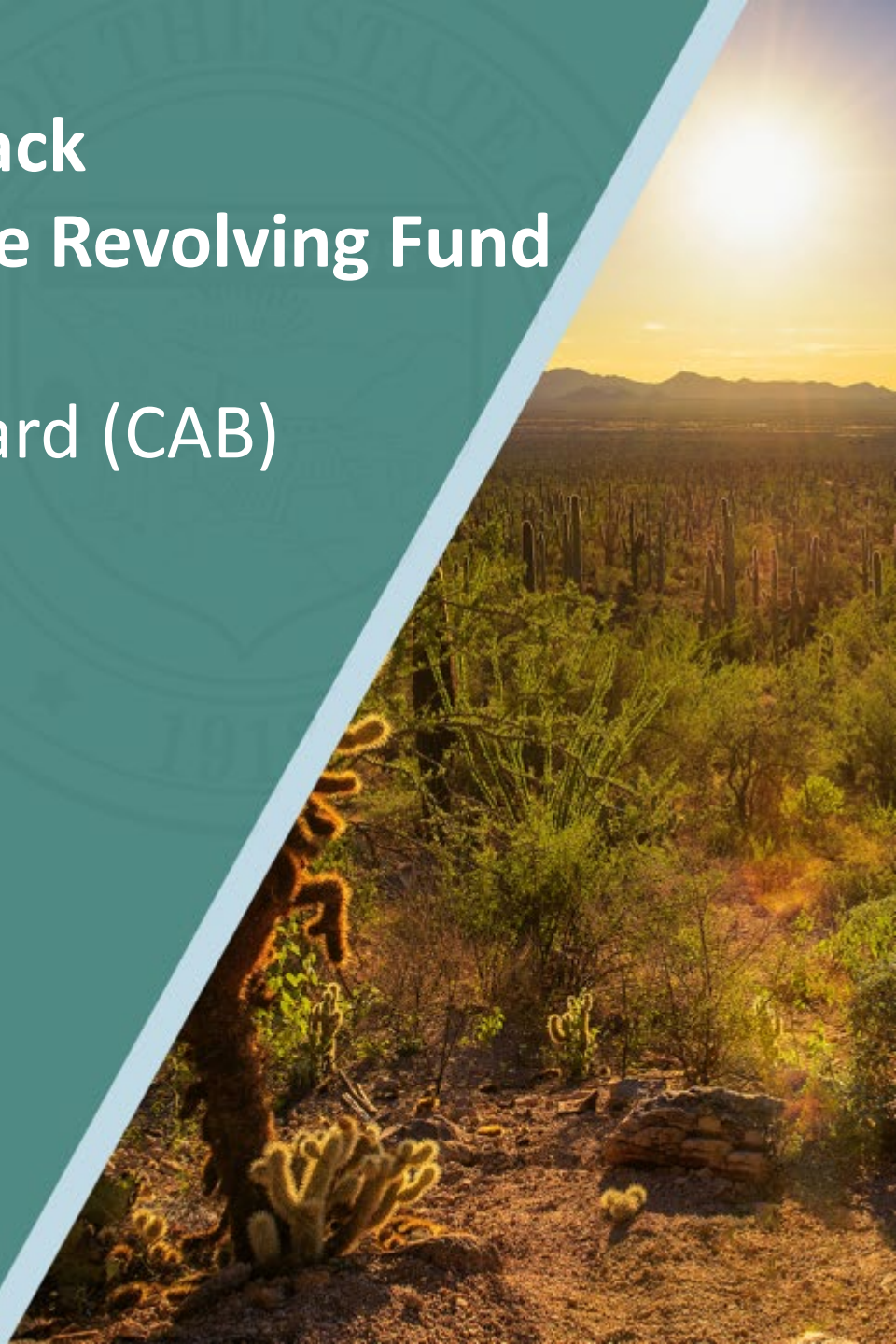


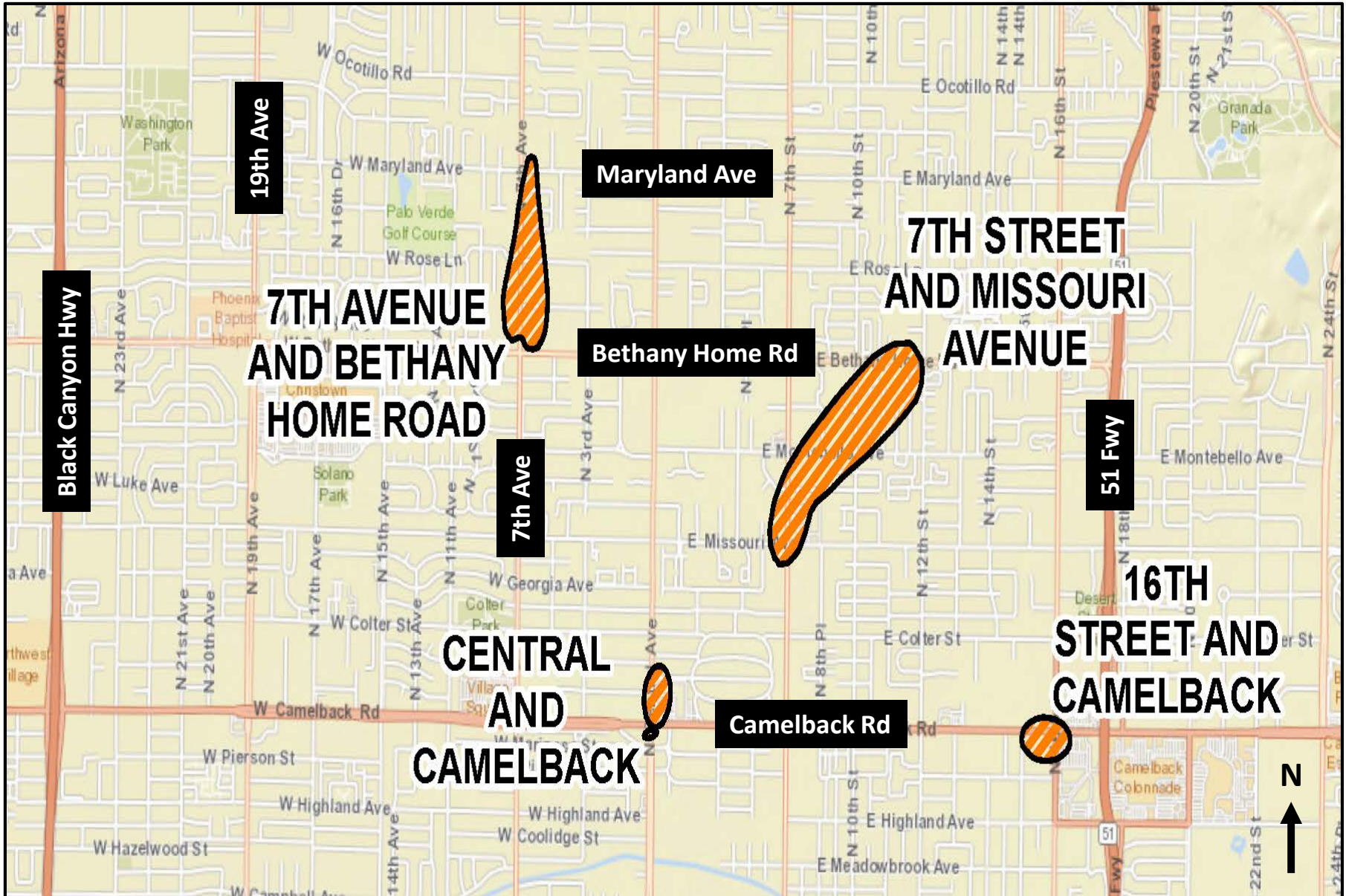
**16th Street and Camelback
Water Quality Assurance Revolving Fund
(WQARF) Site
Community Advisory Board (CAB)
Presentation**

September 28, 2022

Eric Mannlein, Project Manager



Central Phoenix WQARF Sites



- Conducted FY21 groundwater sampling in November 2020 and March 2021.
- Conducted FY22 groundwater sampling in October 2021 and March 2022.

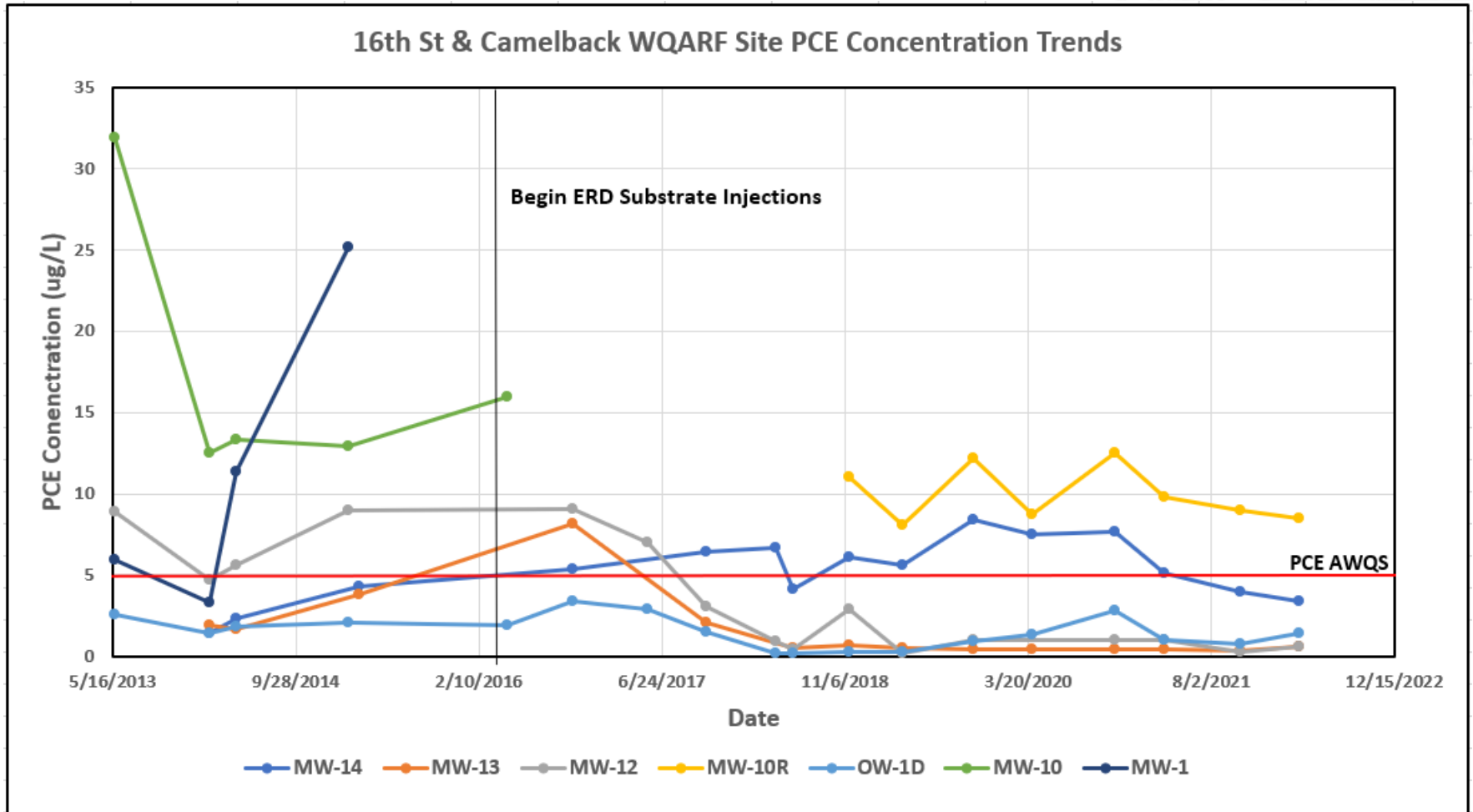
Historical Contaminant Data

- PCE is currently the only contaminant of concern detected in groundwater at the site at concentrations greater than the Aquifer Water Quality Standard (AWQS) of 5 micrograms per liter (ug/L).

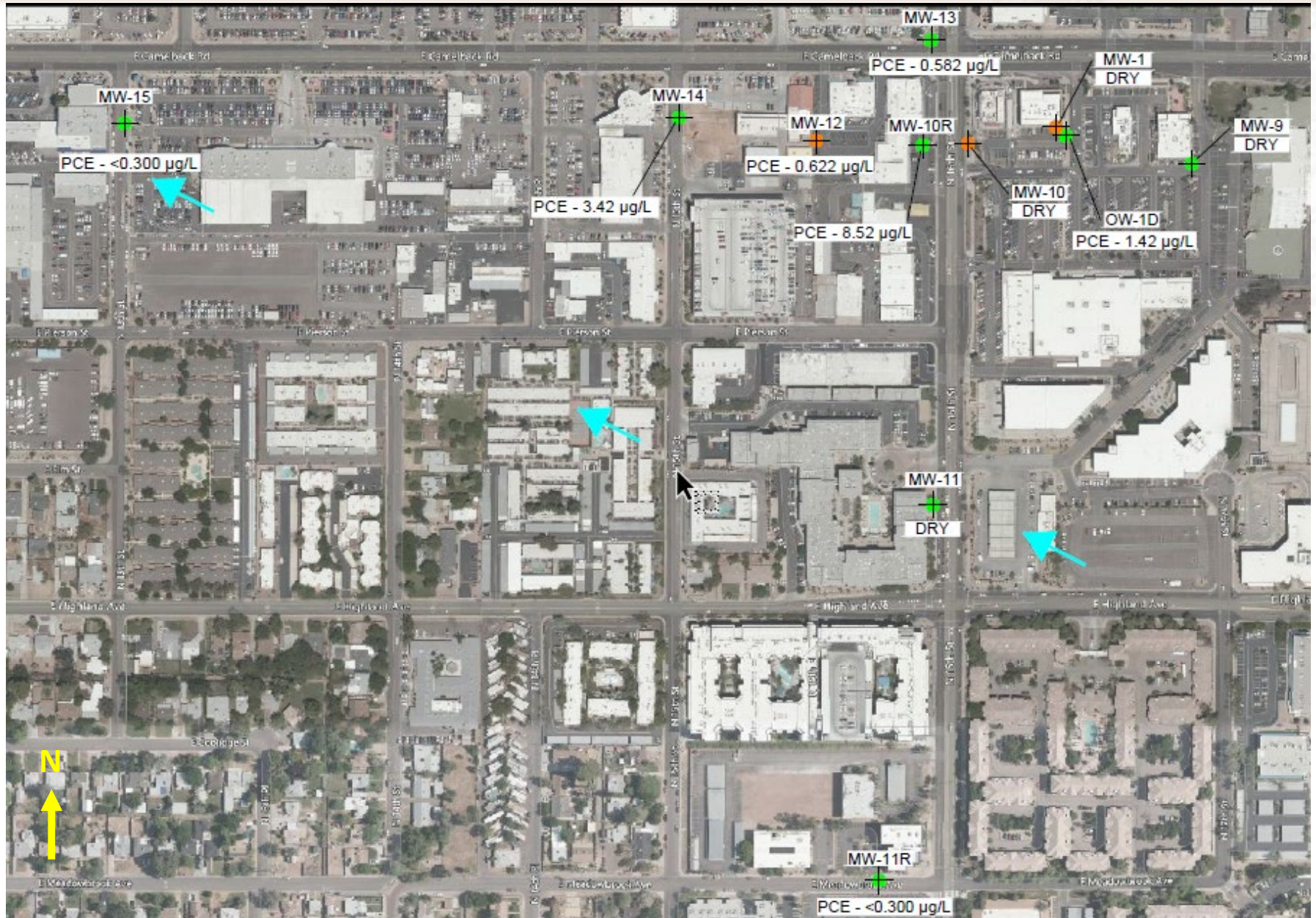
Contaminant	December 1999	August 2007	April 2014	February 2015	April 2016	November 2018	November 2020	March 2022
PCE	160 ug/l	20 ug/l	11.4 ug/l	25.2 ug/l	16 ug/l	11 ug/l	12.5 ug/l	8.5 ug/l
1,2-DCA	400 ug/l	<2.0 ug/l	0.62 ug/l	<0.5 ug/l	<0.5 ug/l	<2.0 ug/l	<0.001 ug/l	<1.0 ug/l
1,2-DCP	15 ug/l	<2.0 ug/l	<0.5 ug/l	<0.5 ug/l	<0.5 ug/l	<2.0 ug/l	<0.001 ug/l	<1.0 ug/l

Current Contaminant Data

- Currently, the only groundwater monitoring well that has PCE concentrations detected above the AWQS is MW-10R.



PCE and TCE Concentrations – October 2019



- Continue to monitor and sample groundwater.



Contacts

Wendy Flood, Community Involvement Coordinator
Remedial Projects Unit
flood.wendy@azdeq.gov
(602) 771-4410

Eric Mannlein, Project Manager
Remedial Projects Unit
mannlein.eric@azdeq.gov
(602) 771-0390