

# 16<sup>th</sup> Street and Camelback Water Quality Assurance Revolving Fund (WQARF) Site Phoenix, AZ CAB Meeting

October 11, 2023

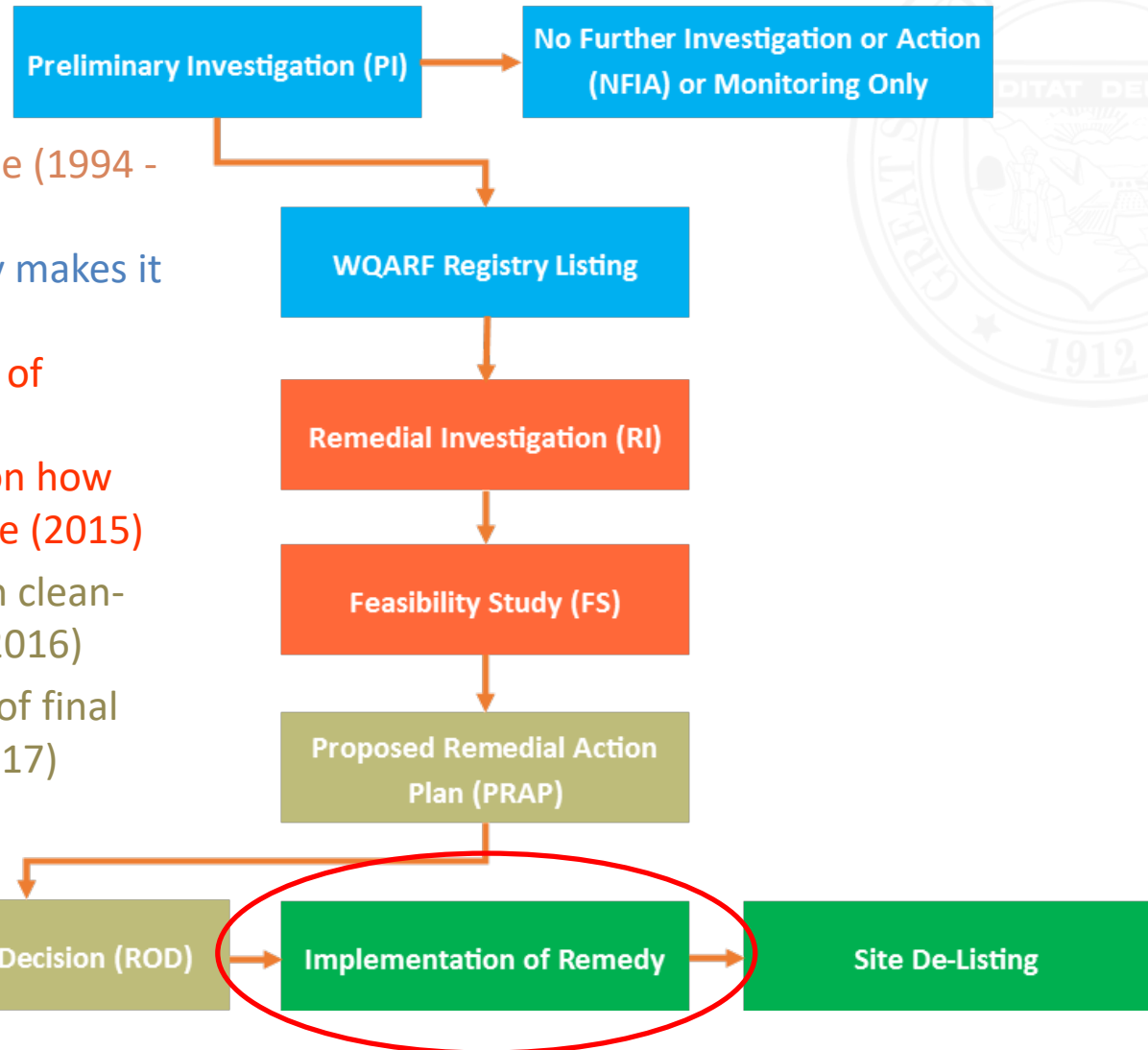
Eric Mannlein, Project Manager



Clean Air, Safe Water,  
Healthy Land for Everyone



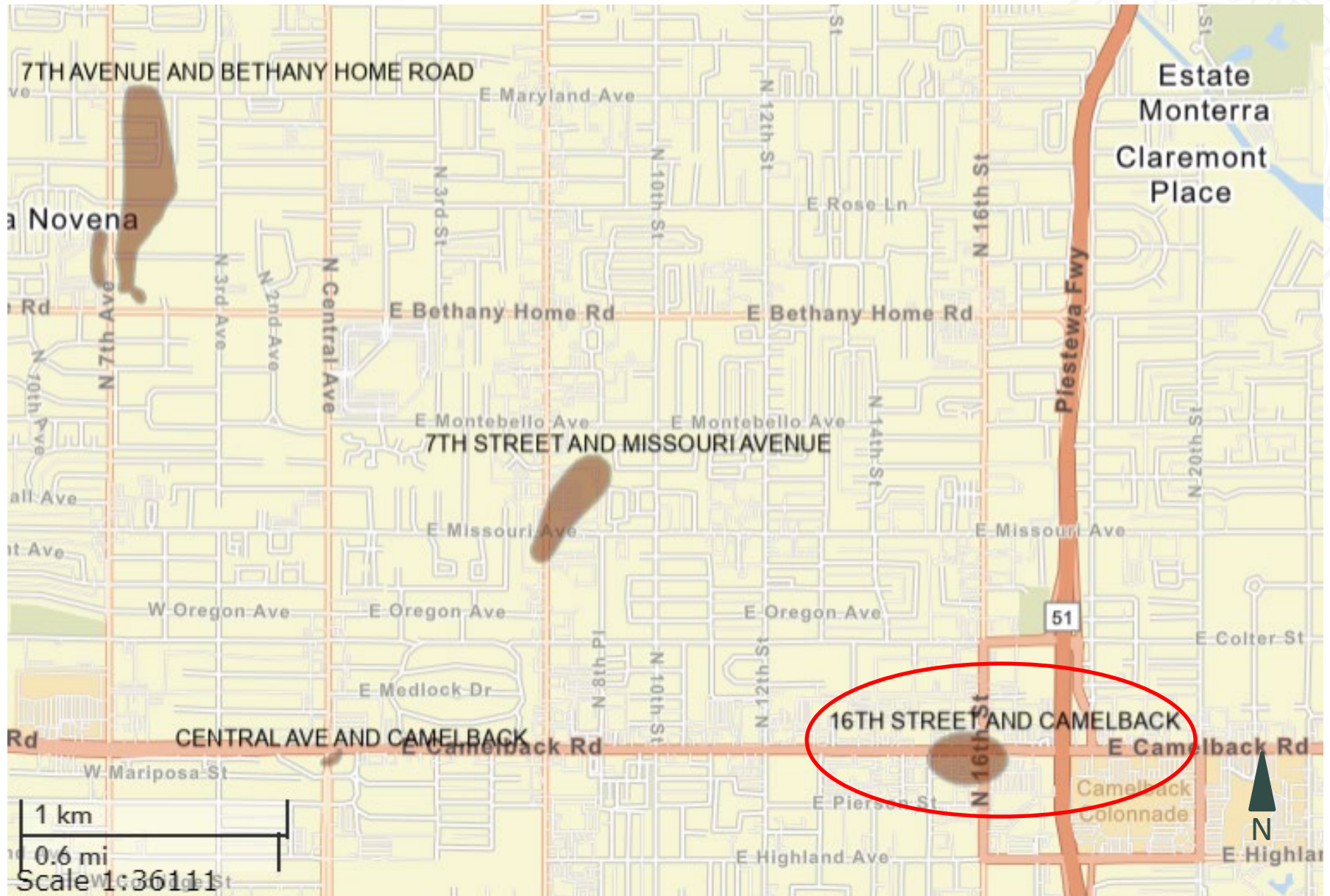
# Steps in WQARF



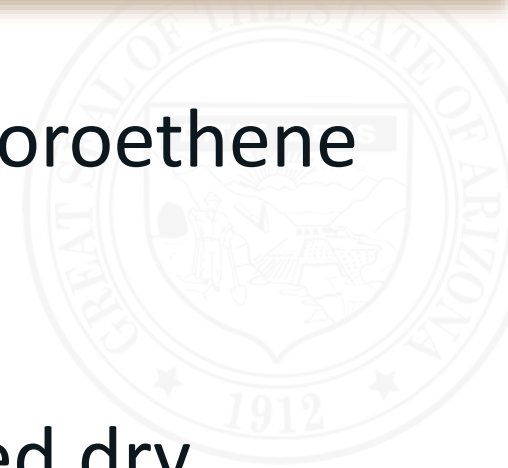
- PI - confirms the release (1994 - 1996)
- Registry Listing - legally makes it a WQARF site (1999)
- RI – determines extent of release (2015)
- FS – provides options on how best to clean up the site (2015)
- PRAP – proposes which clean-up option is the best (2016)
- ROD – announcement of final remedy for the site (2017)



# Site Location



- **Contaminants of Concern** = Tetrachloroethene (PCE)
- **Source of Contamination** = Suspected dry cleaner

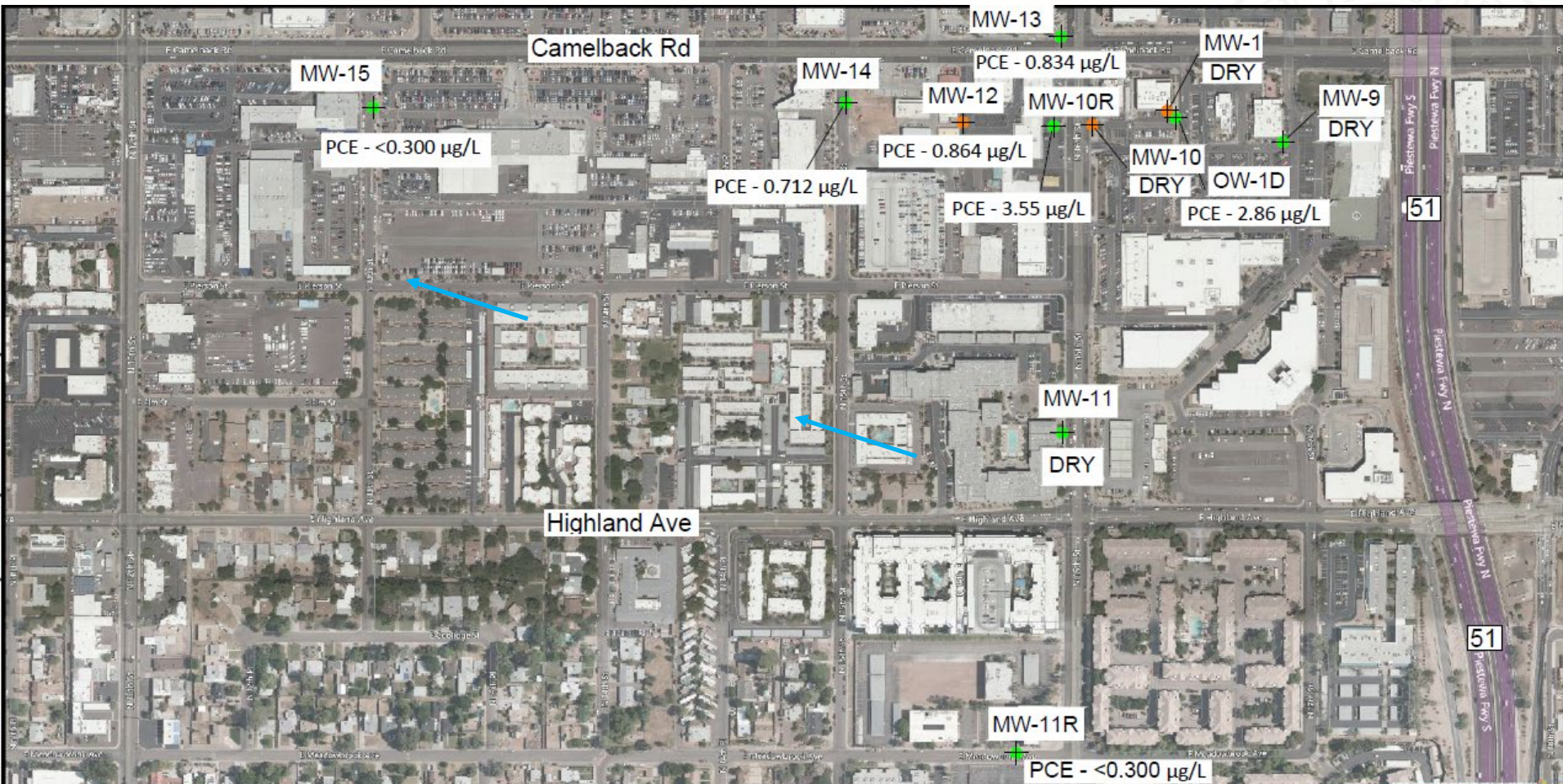


- **Impacted Media** = Soil & Groundwater  
(although previous impacts to soil no longer pose a threat to groundwater)
- **Potential Receptors** = SRP production wells  
(although none have been impacted)
- **Last Milestone** = ROD (February 2017)





# 16<sup>th</sup> Street and Camelback WQARF Site



**LEGEND**

- Monitoring Well Location (Green cross symbol)
- Injection Well Location (Orange cross symbol)

µg/L = Micrograms per Liter  
 Arizona Aquifer Water Quality Standard is 5 µg/L  
 PCE Concentrations that Exceed this Standard are Bolded  
 PCE = Tetrachlorethene  
 < = Less Than

← GW Flow Direction

0 275' 550'  
 SCALE: 1" = 275'

**Pinyon**  
Environmental, Inc.

**GROUNDWATER PCE CONCENTRATIONS**  
**APRIL 2023**

# 16<sup>th</sup> Street and Camelback WQARF Site

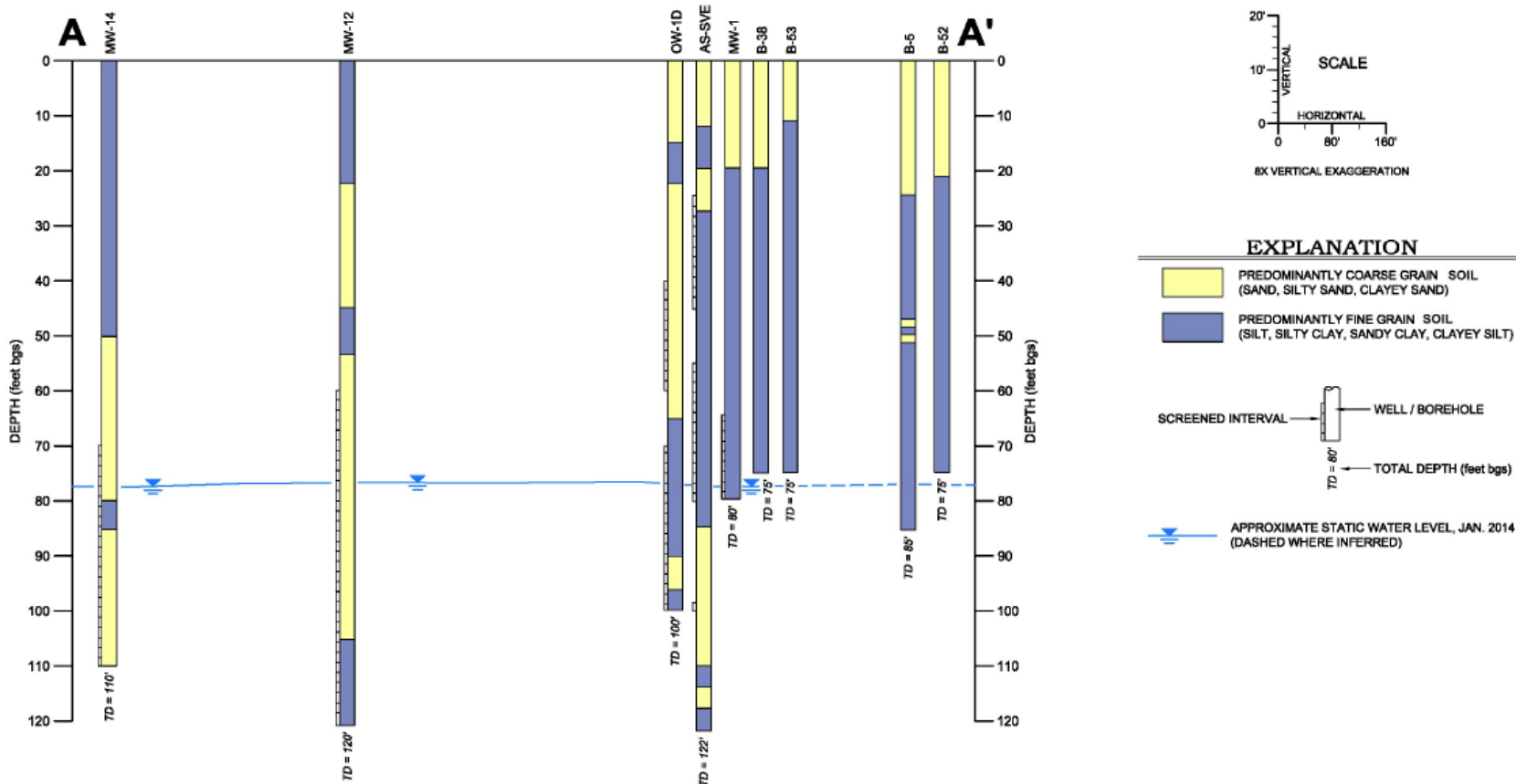
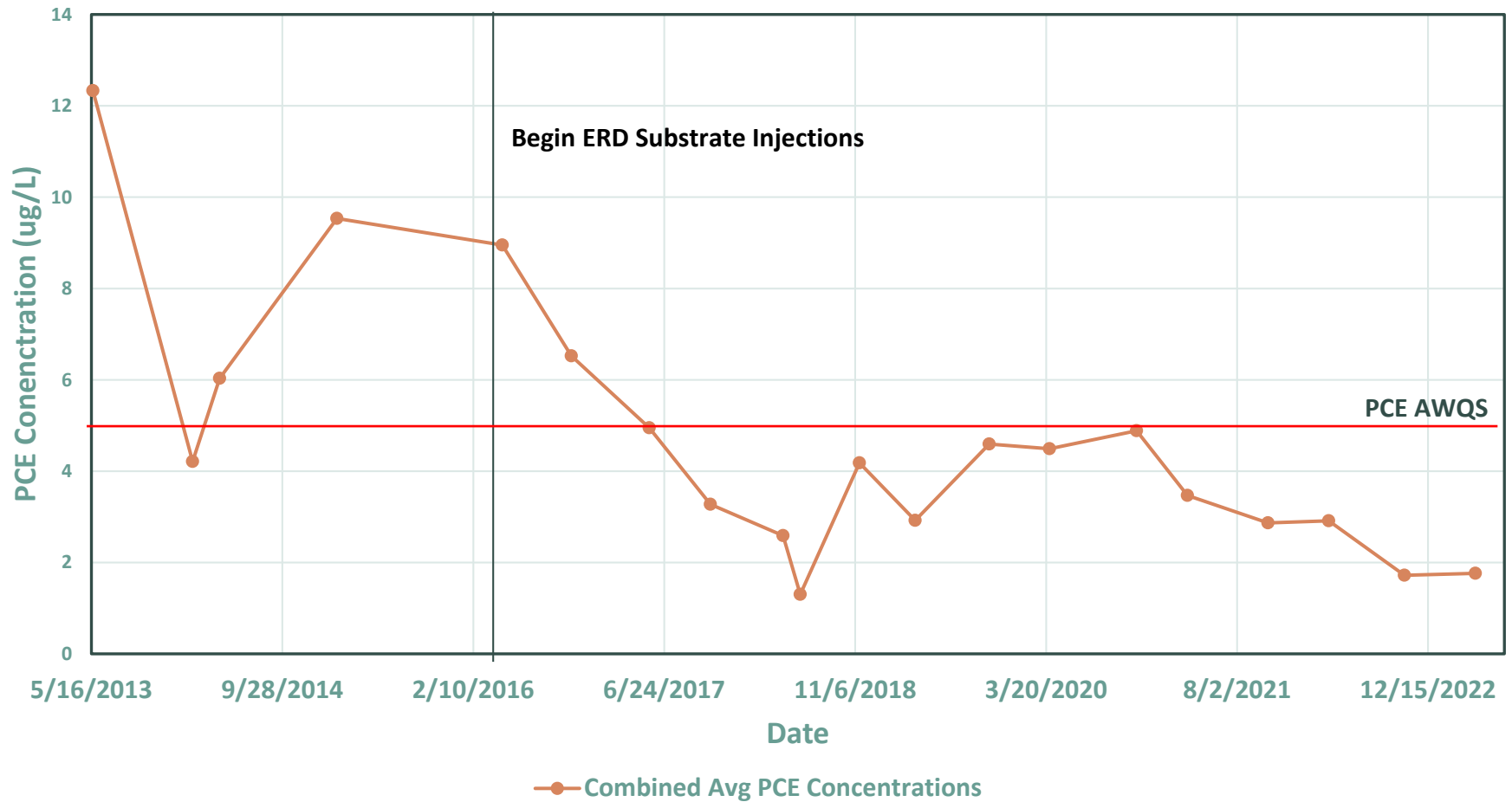


Figure 6  
CROSS-SECTION A-A'  
REMEDIAL INVESTIGATION REPORT  
16th STREET AND CAMELBACK WQARF SITE  
PHOENIX, ARIZONA

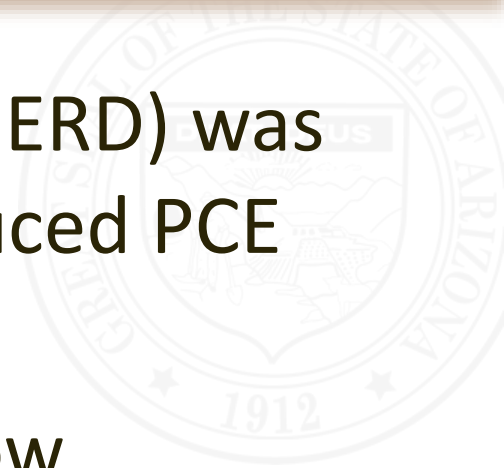
# Groundwater Concentration Trend

## 16th St & Camelback WQARF Site Average PCE Concentration Trend

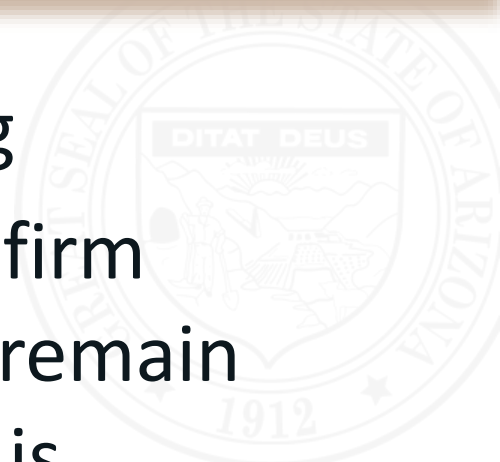




- Enhanced reductive dichlorination (ERD) was conducted from 2016 to 2019 (reduced PCE concentrations and plume size).
- Groundwater plume is small with low concentrations (<1 to 3.6 ug/L).
- Groundwater plume concentrations are currently all below the AWQS (April 2023).



- Continue evaluation for site de-listing
- Continue monitoring activities to confirm current groundwater concentrations remain below the AWQS. Low flow sampling is scheduled for three groundwater monitoring events during this fiscal year (FY24). Once the three low flow samplings events are complete, ADEQ will evaluate the site for de-listing.



## Contact us!

### **Barbara Boschert**

Community Involvement Coordinator  
Remedial Projects Unit

[boschert.barbara@azdeq.gov](mailto:boschert.barbara@azdeq.gov)

602-771-8007

### **Eric Mannlein**

Project Manager  
Remedial Projects Unit

[mannlein.eric@azdeq.gov](mailto:mannlein.eric@azdeq.gov)

602-771-0390

