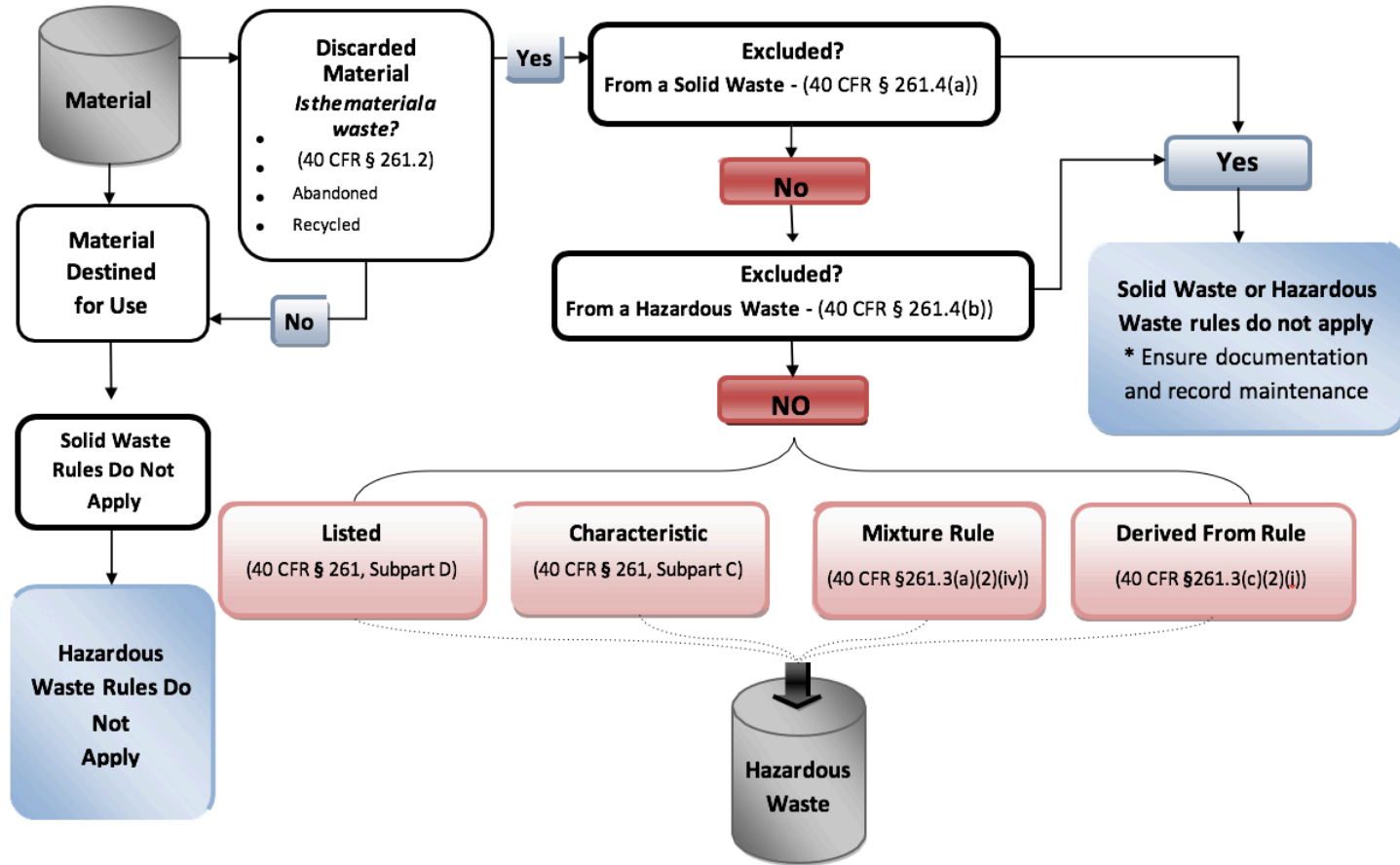


Steps to Basic Hazardous Waste Management



Generator Category Comparison Chart 40 §262.13

	Very Small Quantity Generator (VSQG)	Small Quantity Generator (SQG)	Large Quantity Generator (LQG)
Monthly Generation Rate Note: Count acute and non-acute separately then apply the more stringent generator category	≤ 100 kg (220 lbs.) - or - ≤ 1 kg (2.2 lbs.) of Acute waste - or - ≤ 100 kg (220 lbs.) Acute residue, debris, soil	> 100 kg (220 lbs.) - and - < 1000 kg (2,200 lbs.) -or- ≤ 100kg (220 lbs.) of acute waste	≤ 1000 kg (2,200 lbs.) -or - > 1 kg (2.2 lbs.) of Acute waste - or - > 100 kg (220 lbs.) Acute residue, debris, soil
Maximum Amount Stored	≤ 1000 kg (2,200 lbs.) of total (acute + non-acute waste) - or - ≤ 1 kg (2.2 lbs.) Acute waste - or - ≤ 100 kg (220 lbs.) Acute residue, debris, soil resulting a cleanup of a spill	≤ 6000 kg (~13,228 lbs.) total (acute + non acute waste) - or - ≤ 1 kg (2.2 lbs.) Acute waste - or - ≤ 100 kg (220 lbs.) Acute residue, debris, soil	No Amount Limit - but - < 20,000 kg (~44,100 lbs.) for F006 ~2 roll-offs 15 yds. each; ~1 standard 44,000 lb. truck load
Storage Time Limit	No Time Limit	≤ 180 days ≤ 270 days if greater than 200 miles to treatment, storage, disposal facility (TSDF) 30 day extension with prior ADEQ approval	≤ 90 days ≤ 180 days for F006 sludge when within 200 miles to TSDF 30 day extension with prior ADEQ approval
ADEQ Registration and Generation Fees	Use myDEQ generation reporting to update account annually	\$100 Annual Fee \$67.50 Generation Fee per ton (* No more than \$200,000/generator/yr./site/hazardous waste generated) reported annually through myDEQ generation reporting	\$300 Annual Fee \$67.50 Generation Fee per ton (* No more than \$200,000/generator/yr./site/hazardous Waste generated) reported quarterly through myDEQ generation reporting
EPA ID Number	Not Required, but recommended	Required per 40 CFR § 262.18 (myDEQ)	Required per 40 CFR § 262.18 (myDEQ)
Facility Annual Report	Use myDEQ registration reporting to update account annually	Facility Registration Form for Hazardous Waste is the Facility Annual Report (FAR); submit reports through myDEQ	Facility Registration Form for Hazardous Waste is the Facility Annual Report (FAR); submit reports through myDEQ. Biennial Report must be submitted by March 1 st of even years covering the previous odd year; submit BR through RCRAInfo.
RCRA Subtitle C	Site identification form required for any facility when initially registering with ADEQ or to update change to initial form (8700-12)		
Contingency Plan	Not Required	Basic Information posted by phone	Full Plan Required (40 CFR §262.263)
Personnel Training	Not Required	Basic Training Required (40 CFR § 262.16(b)(9)(iii))	Required (40 CFR §262.17(a)(7)). Examples include: RCRA—Hazardous Waste Management DOT—Hazardous Materials Transportation OSHA—HAZWOPER
Preparedness and Prevention	Not Required	Required (40 CFR §262.16(b)(8)(iii))	Required (40 CFR §262 Subpart M)
Manifest	Not Required; Submitted directly to EPA by receiving facility	Required [AAC R18-8-262.F & I] Submitted directly to EPA by receiving facility	Required [AAC R18-8-262.F & I] Submitted directly to EPA by receiving facility
Exception Report	Not Required	Required after 60 Days (40 CFR §262.42(b))	Required after 45 Days (40 CFR §262.42(a)(2))
Satellite Containers	Allowed	Allowed (40 CFR §262.34 (c)(1))	Allowed (40 CFR §262.34 (c)(1))
Storage Requirements	Limited requirements. Identify all hazardous wastes; comply with quantity limits; ship to approved solid or hazardous waste facility; do not discharge to soil/ water/air.	Comply with technical standards under 40 CFR §262 for containers, ignitables, air emissions, and tanks (40 CFR §262.16(b)(2))	Comply with technical standards under 40 CFR §262 for containers, ignitables, air emissions, and tanks (40 CFR §262.17(a)(1))
General Reference	40 CFR 62.10(a)(1)(i)	40 CFR §262.34(d)&(e)	40 CFR §262.34(a)&(b)

*This graph is only for basic informational purposes only. Please refer to the corresponding federal and state regulations for a complete list of requirements.