

Vapor Intrusion (VI) Operations & Maintenance; Investigation:

- Routine indoor air monitoring of the mitigated homes (19 residential spaces and one industrial/commercial) in the OU1 area was conducted this year.
- Mitigation systems are protecting the indoor air to below EPA's residential health protective action level of 1 ug/m³ for TCE.
- One home needs indoor air and sub-slab sampling when the resident is available.
- Staff are available in case of emergency or if mitigation systems require attention.
- Parcels on the former Motorola Plant property have been evaluated for soil gas concentrations as part of the Baker Development property transfer and redevelopment plans.

OU2 Vapor Intrusion Investigation

- OU2 VI effort is ongoing and nearing completion. EPA staff have been assisting to obtain access.
- Subsurface soil gas sample points have been and are being closed out. Indoor air sampling has occurred where access was granted.
- To date, mitigation has not been warranted.
- Vapor intrusion results will be incorporated into OU2-wide Remedial Investigation Report.

Operable Unit 3

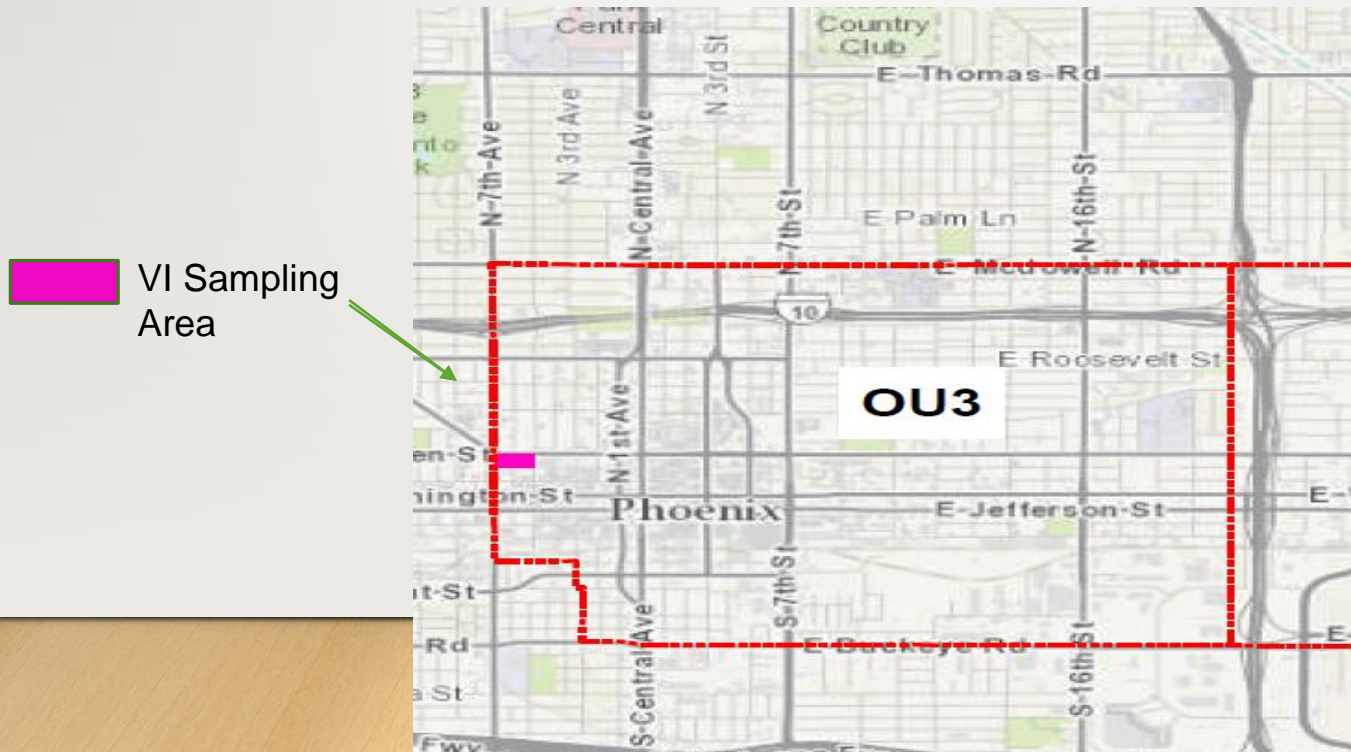
- The OU3-wide Baseline Risk Assessment and Feasibility Study (FS) are in progress.
- When FS is completed, EPA will issue the Preferred Alternative in a Proposed Plan Fact Sheet for public comment. The FS completion, Proposed Plan, and Public Meeting are estimated in 2023.

Milum Textile Services – Property is being transferred and redevelopment is planned. Mr. Milum and the new property owner are working out property evaluation details for the redevelopment with ADEQ/EPA coordinated review under ADEQ's Voluntary Remediation Program.

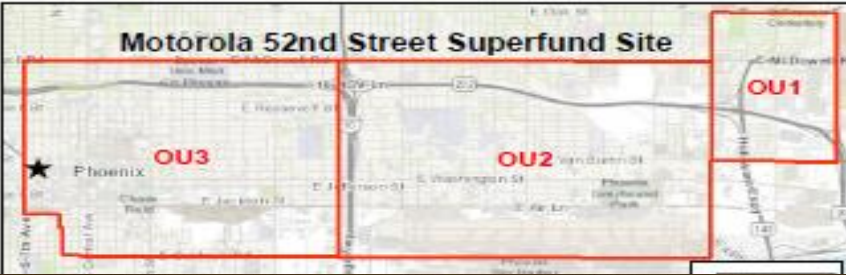
Former Tierney Turbines – The responsible party was considering a property enhancement, but the project was put on hold in 2021. Agency oversight and coordination will continue when/if the property owner proceeds with the project.

OU3 Vapor Intrusion Investigation

- Limited OU3 soil gas data was collected in 2021-2022, in a small localized area. To date, no current vapor intrusion threat has been noted.
- Sampling area is bounded by West Van Buren to the north, N. 5th Avenue to the east, West Adams to the south and N. 7th Avenue to the west.
- Indoor air and sub-slab sampling was completed in late 2021 and Spring 2022 at two buildings. No mitigation is warranted based on the data.



Operable Unit 3



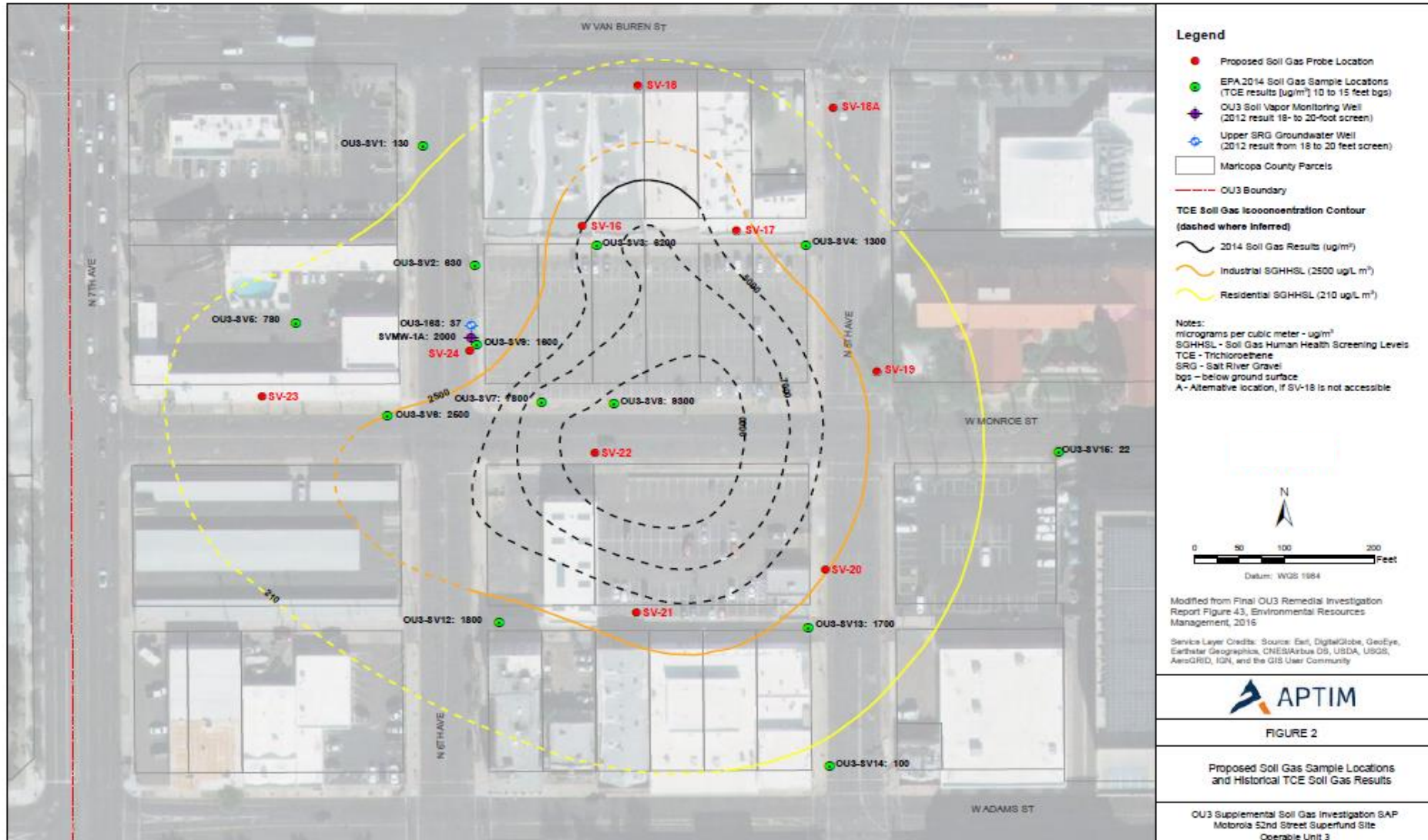
Legend

- OU - Operable Unit
- Targeted Buildings for Vapor Intrusion Investigation

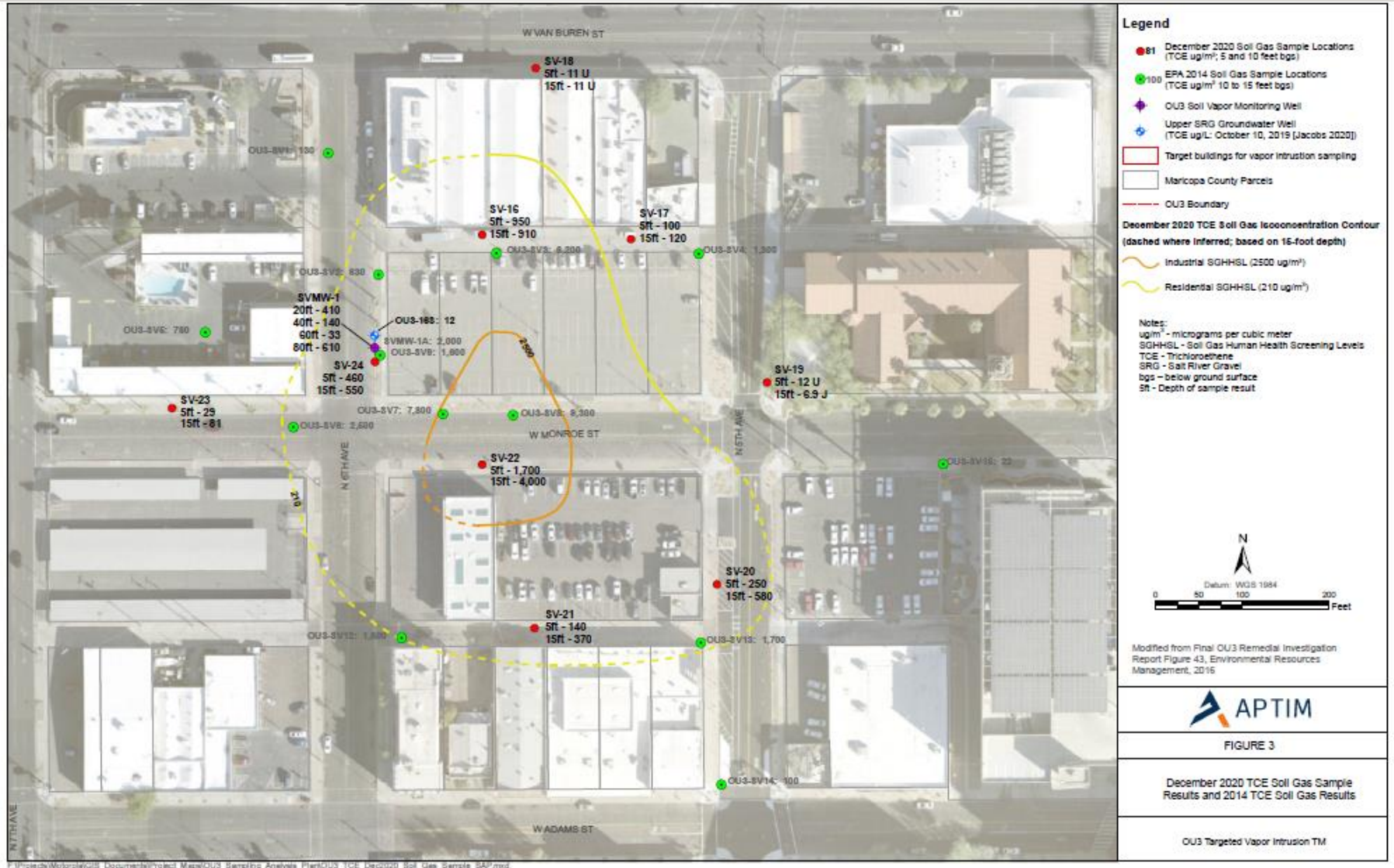


FIGURE 1

OU3 Vapor Intrusion Investigation Area – 2020-21 Sample Points

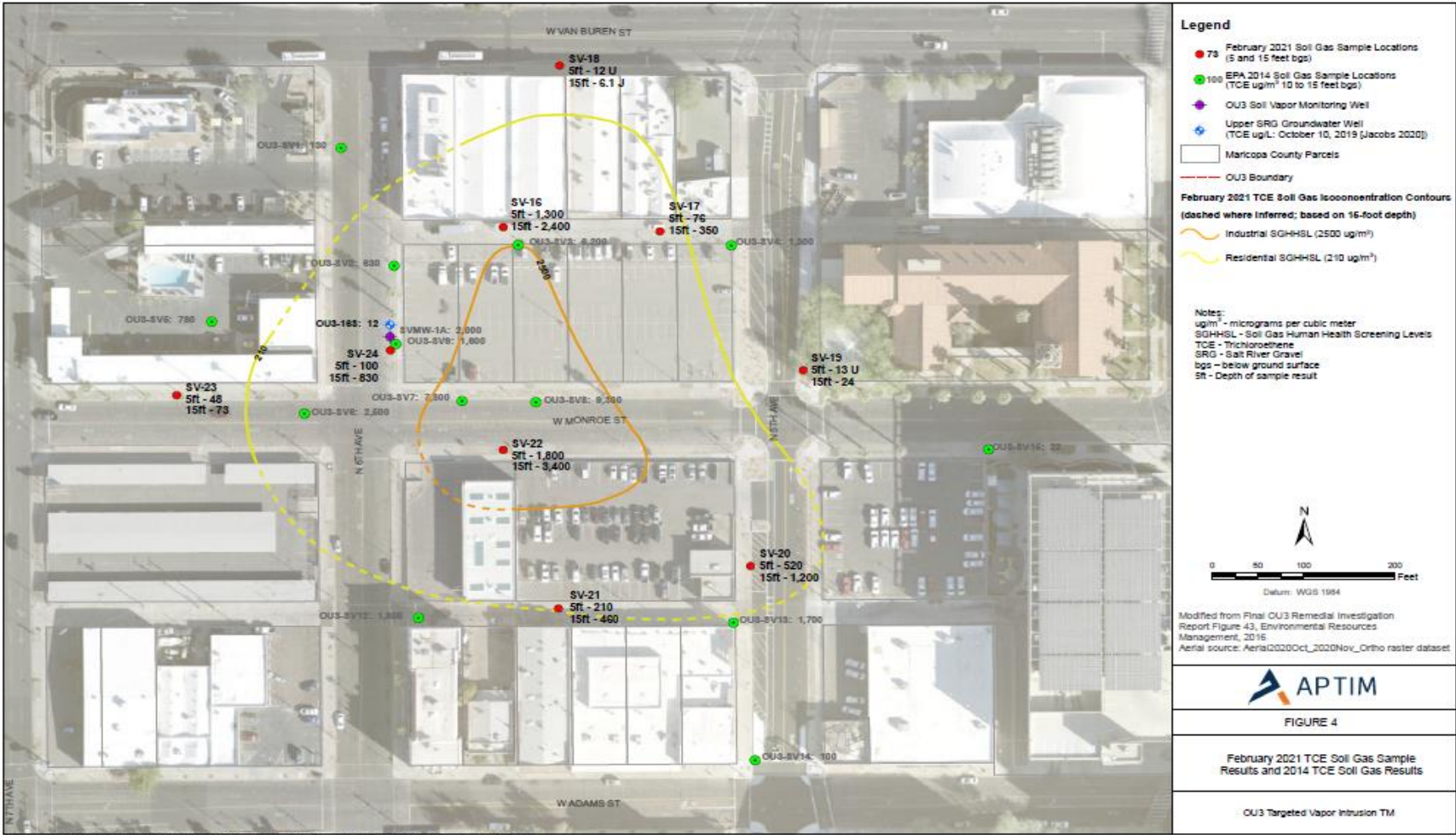


OU3 Vapor Intrusion Investigation Area – 2020 Sample Results



Operable Unit 3

OU3 Vapor Intrusion Investigation Area – 2021 Sample Results



F:\Projects\Motorcycle\28_Documents\projec_Maps\OU3_Sampling_Analysis_Plans\OU3_TCE_Jan2021_Soil_Gas_Sample_SAP.mxd

Five-Year Review

- The 2021 Five-Year Review was completed in September 2021 and was provided to the CIG on October 14, 2021. It is also on EPA's website.
- OU3 is not included in the Five-Year Review because it is in the Feasibility Study phase and does not have a remedy in place at this time.
- Findings are that OU1 and OU2 groundwater interim remedies are protecting human health and the environment.
- For OU1, there is no exposure to the groundwater plume, vapor intrusion mitigation systems are in place, and plume containment is being achieved by the interim groundwater extraction and treatment system.
- For OU2, groundwater plume containment improvements have been completed, there is no exposure to the groundwater plume, vapor intrusion data indicates no mitigation needed.
- EPA and ADEQ will continue to monitor the upgradient Earll Site plume that is migrating into OU2 to ensure the OU2 remedy remains effective.
- Next Five-Year Review is scheduled for 2026.

- EPA's consultant, Skeo, met with CIG members, ADEQ, and EPA to poll for activities for the Technical Assistance Services for Communities Grant funded work in 2017.
- Draft recommendations were prioritized by the CIG, written up, and reviewed by CIG.
- In 2018, Skeo developed and provided a Superfund/CERCLA Overview presentation to the CIG.
- In 2019, SKEO developed and presented the CIG with a Draft Community Outreach Guide and Draft Motorola 52nd Street Site Background Handout, and revised documents to include CIG input.
- In 2020, the interim Final handouts and a layered M52 Sitewide map were developed and provided to the CIG. Based on CIG input, the documents were finalized in 2021 and Skeo provided the final materials to the CIG.



Next CIG Webinar

- Proposed webinar date is October 18, 2023.
- If CIG members would like a conference call update in April 2023, please send an email to EPA with proposed dates.

