

Motorola 52nd Street Superfund Site Fall 2021 Conditions

Community Information Group Meeting
November 16, 2022

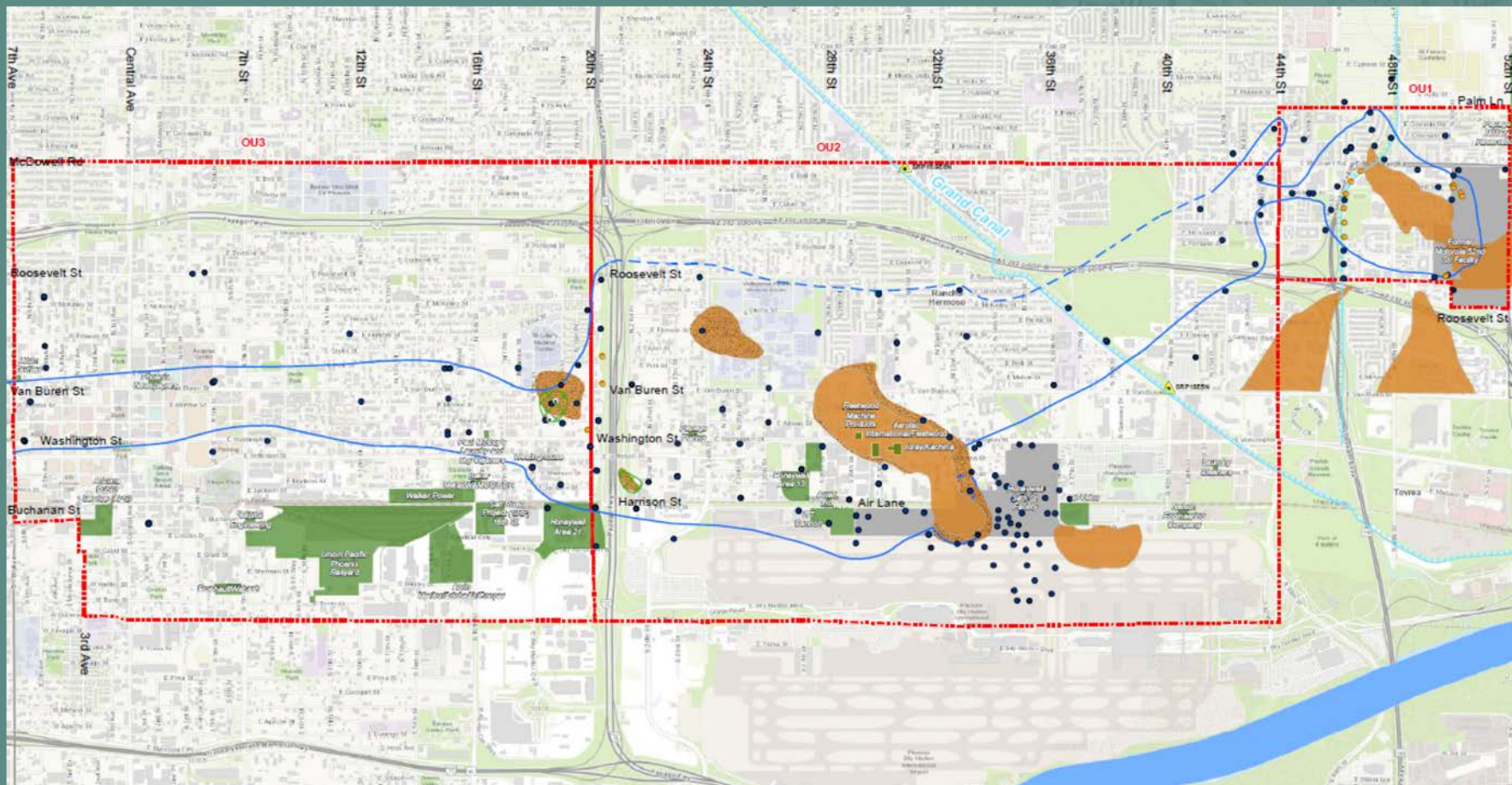
Project Manager
Brett McDaniel, ADEQ



MOTOROLA 52ND STREET MAPS FALL 2021

- Maps were compiled in Summer 2022 from data collected in Fall 2021 and submitted by Potentially Responsible Parties (PRPs).
- A sitewide map is available on the Arizona Dept. of Environmental Quality (ADEQ), Motorola Superfund webpage – <https://azdeq.gov/node/1916>
- Another resource is ADEQ E-MAPS <https://www.azdeq.gov/emaps>

VOLATILE ORGANIC COMPOUNDS (VOC) PLUME EXTENT MOTOROLA 52nd STREET FALL 2021



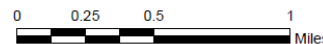
Legend

- Motorola 52nd Street Monitor Wells
- OU1 and OU2 Extraction Wells
- ▭ Operable Unit (OU) Boundary
- ▭ Colluvium
- ▭ Intersection of Salt River Gravel and Bedrock (Area where Basin Fill is absent)
- ▭ Approximate Area of Bedrock above the Water Table
- Interpreted VOC Plume Boundary based on the combined extents of TCE greater than 5 ug/L in Groundwater in the Basin Fill and Salt River Gravel Units
- - - Dashed where Inferred

- ▲ SRP Production Well
- ▭ Potentially Responsible Party
- ▭ Responsible Party

Note: Wells sampled during August 9 through November 7, 2021 shown. One well resampled in January 2022. Concentrations in micrograms per liter (ug/L). For comprehensive listing of wells, see specific reports for each operable unit.

Footnote: * = Well completed in colluvium, not used to determine plume extent



MOTOROLA 52nd STREET FALL 2021 CONDITIONS

OU1

- Groundwater levels generally ~33 to 113 feet below ground surface (bgs)
- Highest trichloroethene (TCE) concentration was 149,000 micrograms per liter (µg/l) at bedrock well MP36-C (N. 50th Street and E. McDowell Rd.)
- 83.6 million gallons of water were treated from OU1 extraction wells in 2021
 - 4.285 billion gallons of water extracted and treated through 2021
- 428 lbs. Volatile organic compounds (VOCs) were removed in 2021
 - Nearly 28,336 lbs. VOCs removed through 2021

MOTOROLA 52nd STREET FALL 2021 CONDITIONS



OU2

- Groundwater levels generally ~75-110 feet bgs
 - Water levels declined ~1.0 feet on average since Fall 2020
- The highest TCE concentration was 277 µg/l at Basin Fill well DM509 (30th and Van Buren)
- 673 million gallons of water were treated from OU2 extraction wells in 2021
 - Over 18.6 billion gallons of water extracted and treated to-date
- 223 lbs. of VOCs removed in 2021
 - Over 16,000 lbs. VOCs removed through 2021

MOTOROLA 52nd STREET FALL 2021 CONDITIONS



OU3

- Groundwater levels generally ~92-109 feet bgs
 - Water levels rose ~0.17 feet on average since 2020
- Highest concentration of TCE was 41 µg/L at lower SRG well OU3-22M (N. 9th Ave. and W. Van Buren)