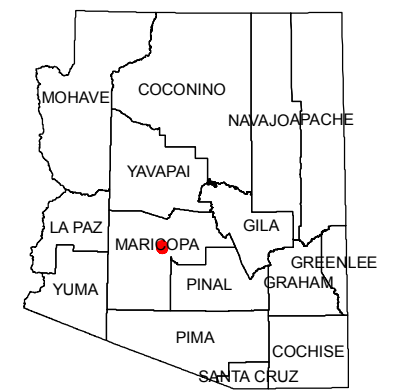
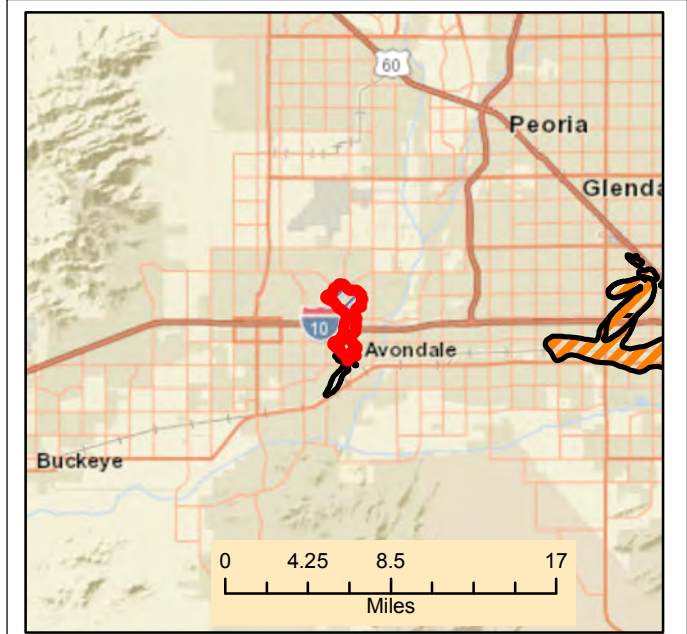
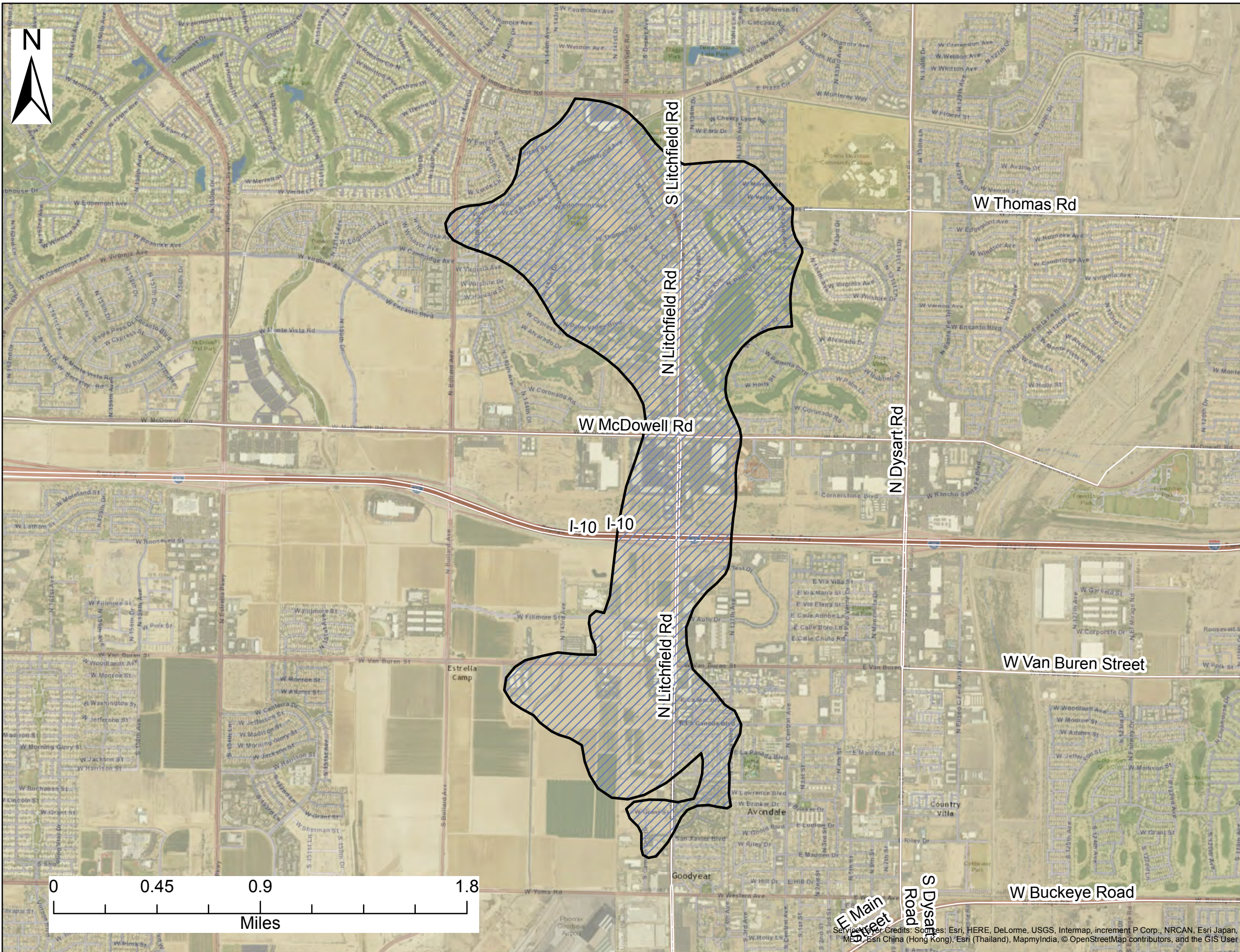






PHOENIX GOODYEAR AIRPORT NORTH



- TYPE**
-  EPA NPL
 -  WQARF
 -  Former WQARF Plume
 -  DOD

Plume Data Update: 2016-07-01

Plume boundaries depicted on the site map represent ADEQ's interpretation of data available at the time the map was constructed. The map is intended to provide the public with basic information as to the estimated geographic extent of known contamination as of the date of map production. The actual extent of contamination may be different. Therefore, the plume for this site may change in the future as new information becomes available.

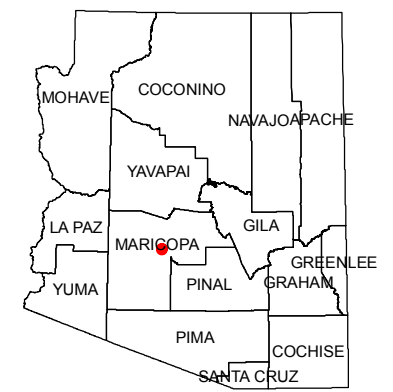
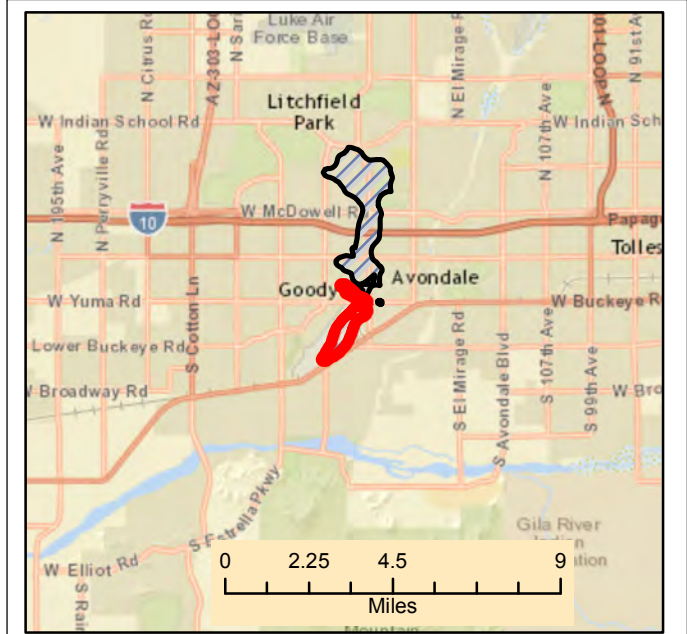
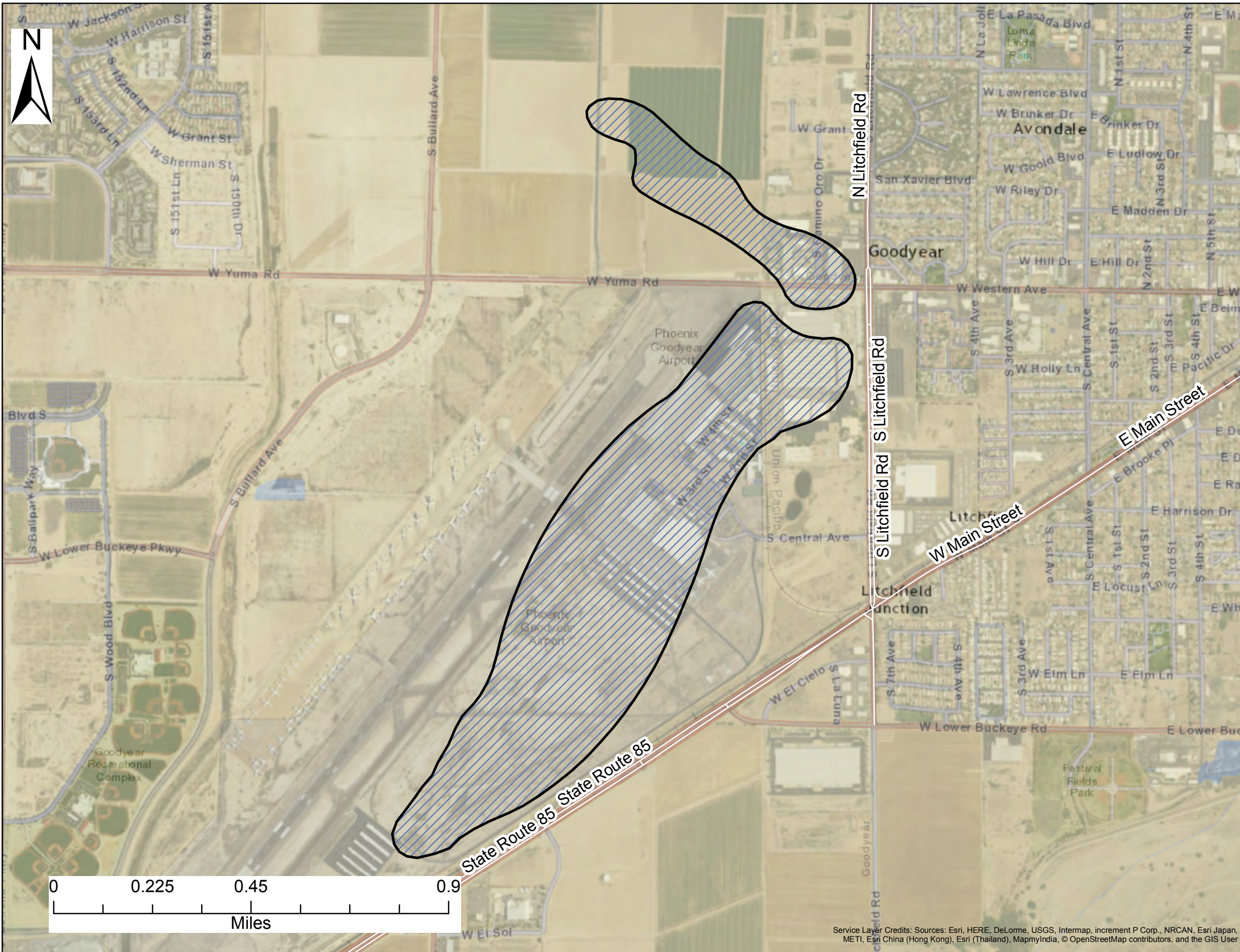
Date Map Saved: 2016-07-29







Publication Number: M 16 -41

Service Provider Credits: Sources: Esri, HERE, DeLorme, USGS, Intermap, increment P Corp., NRCAN, Esri Japan, ME, Esri China (Hong Kong), Esri (Thailand), MapmyIndia, © OpenStreetMap contributors, and the GIS User Community

PHOENIX GOODYEAR AIRPORT SOUTH



- TYPE**
-  EPA NPL
 -  WQARF
 -  Former WQARF Plume
 -  DOD

Plume Data Update: 2016-07-01

Plume boundaries depicted on the site map represent ADEQ's interpretation of data available at the time the map was constructed. The map is intended to provide the public with basic information as to the estimated geographic extent of known contamination as of the date of map production. The actual extent of contamination may be different. Therefore, the plume for this site may change in the future as new information becomes available.

Date Map Saved: 2016-07-29



Publication Number: M 16 -42

Service Layer Credits: Sources: Esri, HERE, DeLorme, USGS, Intermap, increment P Corp., NRCAN, Esri Japan, METI, Esri China (Hong Kong), Esri (Thailand), MapmyIndia, © OpenStreetMap contributors, and the GIS User