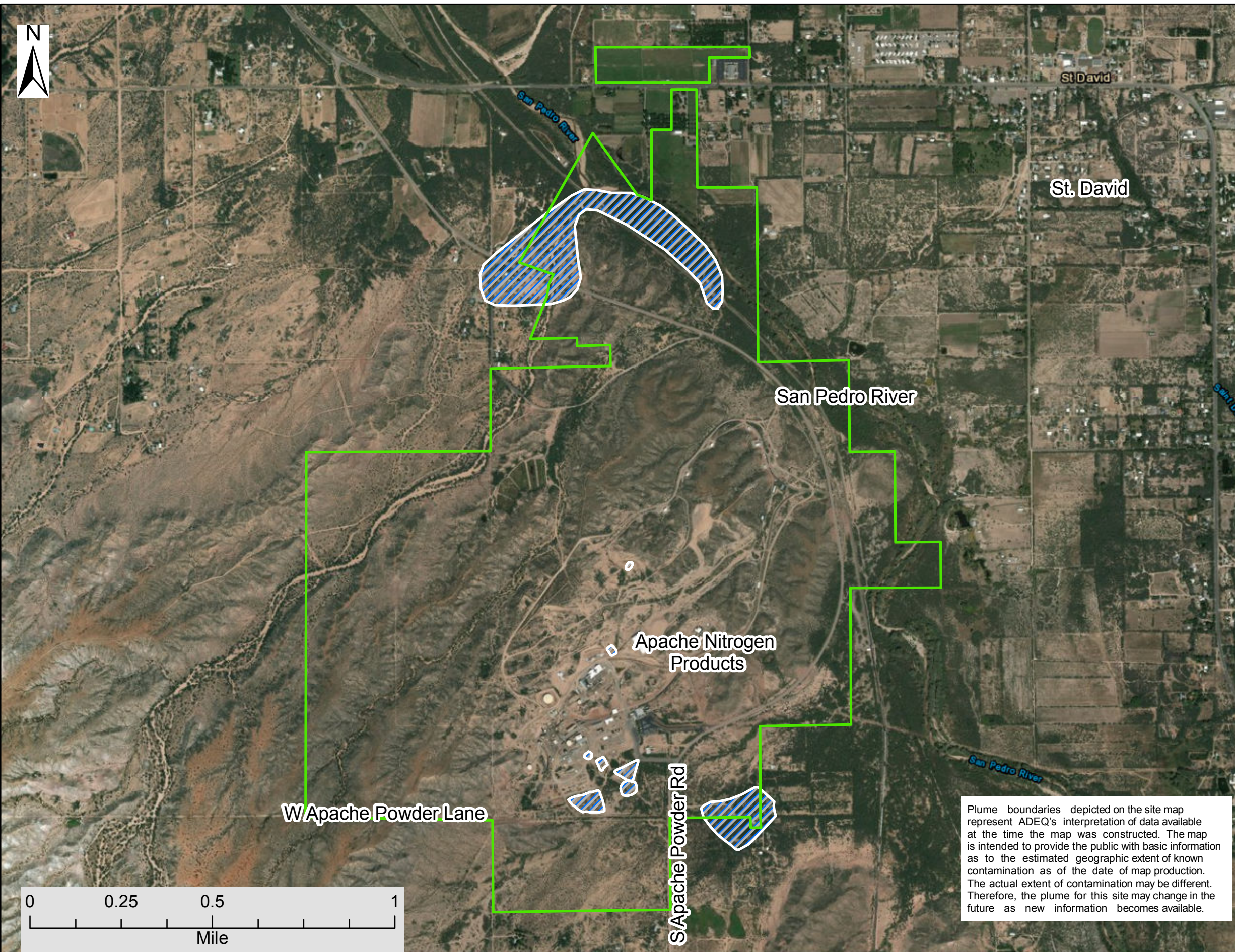
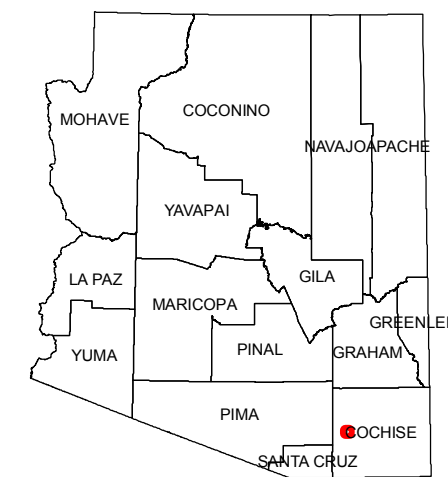
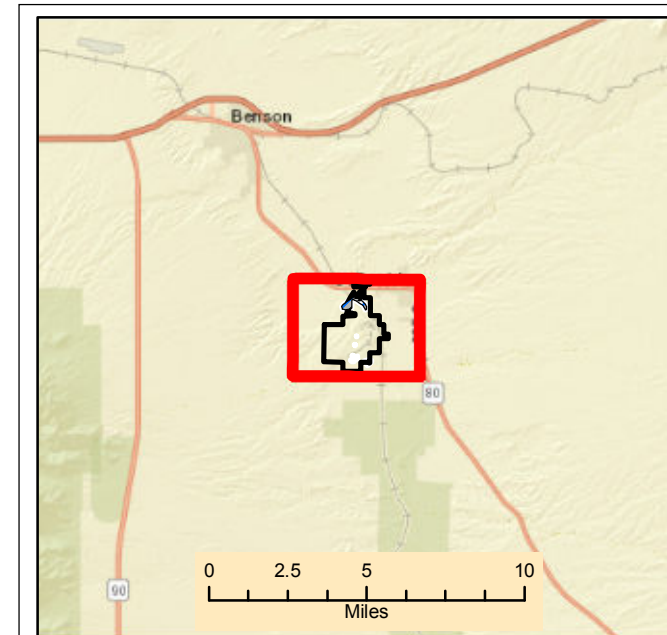





Apache Powder



Plume boundaries depicted on the site map represent ADEQ's interpretation of data available at the time the map was constructed. The map is intended to provide the public with basic information as to the estimated geographic extent of known contamination as of the date of map production. The actual extent of contamination may be different. Therefore, the plume for this site may change in the future as new information becomes available.



-  ANPI Boundary
-  Superfund
-  Counties

Plume Data Update: 2/01/2018



Publication Number: M18-60

Date Map Saved: 5/14/2018