

David A. Burchard
Arizona Department of Environmental Quality, PHX
1110 W. Washington Street
Phoenix, AZ 85007

Project: School Lead Testing Screening
Project Number: Canyon Del Oro High School

Reported:
06/06/17 16:48

Analyte

1001 (7052089-01) Drinking Water (Grab) Sampled: 05/11/17 05:50 Received: 05/22/17 09:20

| Analyte | Result | PQL | Units | Dilution | Batch | Prepared | Analyzed | Method | Notes |
|--|--------|-----|-------|----------|-------|----------|----------|--------|-------|
| Legend Technical Services of Arizona, Inc. | | | | | | | | | |

Total Metals

| | | | | | | | | | |
|------|------|-----|------|---|---------|----------------|----------------|-----------|--|
| Lead | <5.0 | 5.0 | ug/L | 1 | B7E1984 | 05/24/17 16:02 | 05/26/17 09:46 | EPA 200.8 | |
|------|------|-----|------|---|---------|----------------|----------------|-----------|--|

1004-1 (7052089-02) Drinking Water (Grab) Sampled: 05/11/17 06:37 Received: 05/22/17 09:20

| Analyte | Result | PQL | Units | Dilution | Batch | Prepared | Analyzed | Method | Notes |
|--|--------|-----|-------|----------|-------|----------|----------|--------|-------|
| Legend Technical Services of Arizona, Inc. | | | | | | | | | |

Total Metals

| | | | | | | | | | |
|------|------|-----|------|---|---------|----------------|----------------|-----------|--|
| Lead | <5.0 | 5.0 | ug/L | 1 | B7E1984 | 05/24/17 16:02 | 05/26/17 09:50 | EPA 200.8 | |
|------|------|-----|------|---|---------|----------------|----------------|-----------|--|

1004-2 (7052089-03) Drinking Water (Grab) Sampled: 05/11/17 06:38 Received: 05/22/17 09:20

| Analyte | Result | PQL | Units | Dilution | Batch | Prepared | Analyzed | Method | Notes |
|--|--------|-----|-------|----------|-------|----------|----------|--------|-------|
| Legend Technical Services of Arizona, Inc. | | | | | | | | | |

Total Metals

| | | | | | | | | | |
|------|------|-----|------|---|---------|----------------|----------------|-----------|--|
| Lead | <5.0 | 5.0 | ug/L | 1 | B7E1984 | 05/24/17 16:02 | 05/26/17 09:54 | EPA 200.8 | |
|------|------|-----|------|---|---------|----------------|----------------|-----------|--|

1005-1 (7052089-04) Drinking Water (Grab) Sampled: 05/11/17 06:08 Received: 05/22/17 09:20

| Analyte | Result | PQL | Units | Dilution | Batch | Prepared | Analyzed | Method | Notes |
|--|--------|-----|-------|----------|-------|----------|----------|--------|-------|
| Legend Technical Services of Arizona, Inc. | | | | | | | | | |

Total Metals

| | | | | | | | | | |
|------|----|-----|------|---|---------|----------------|----------------|-----------|--|
| Lead | 21 | 5.0 | ug/L | 1 | B7E1984 | 05/24/17 16:02 | 05/26/17 09:57 | EPA 200.8 | |
|------|----|-----|------|---|---------|----------------|----------------|-----------|--|

1005-2 (7052089-05) Drinking Water (Grab) Sampled: 05/11/17 07:10 Received: 05/22/17 09:20

| Analyte | Result | PQL | Units | Dilution | Batch | Prepared | Analyzed | Method | Notes |
|--|--------|-----|-------|----------|-------|----------|----------|--------|-------|
| Legend Technical Services of Arizona, Inc. | | | | | | | | | |

Total Metals

| | | | | | | | | | |
|------|-----|-----|------|---|---------|----------------|----------------|-----------|--|
| Lead | 8.1 | 5.0 | ug/L | 1 | B7E1984 | 05/24/17 16:02 | 05/26/17 10:09 | EPA 200.8 | |
|------|-----|-----|------|---|---------|----------------|----------------|-----------|--|

1006 (7052089-06) Drinking Water (Grab) Sampled: 05/17/17 06:43 Received: 05/22/17 09:20

| Analyte | Result | PQL | Units | Dilution | Batch | Prepared | Analyzed | Method | Notes |
|--|--------|-----|-------|----------|-------|----------|----------|--------|-------|
| Legend Technical Services of Arizona, Inc. | | | | | | | | | |

Total Metals

| | | | | | | | | | |
|------|------|-----|------|---|---------|----------------|----------------|-----------|--|
| Lead | <5.0 | 5.0 | ug/L | 1 | B7E1984 | 05/24/17 16:02 | 05/26/17 10:13 | EPA 200.8 | |
|------|------|-----|------|---|---------|----------------|----------------|-----------|--|

1007-1 (7052089-07) Drinking Water (Grab) Sampled: 05/17/17 06:51 Received: 05/22/17 09:20

| Analyte | Result | PQL | Units | Dilution | Batch | Prepared | Analyzed | Method | Notes |
|---------|--------|-----|-------|----------|-------|----------|----------|--------|-------|
|---------|--------|-----|-------|----------|-------|----------|----------|--------|-------|

Legend Technical Services of Arizona, Inc.

Anna Teter

Client Services Representative

The results in this report apply to the samples analyzed in accordance with the chain of custody document. This analytical report must be reproduced in its entirety.

Phone Number: (602) 324-6100

Page 1 of 39

David A. Burchard
Arizona Department of Environmental Quality, PHX
1110 W. Washington Street
Phoenix, AZ85007

Project: School Lead Testing Screening
Project Number: Canyon Del Oro High School

Reported:
06/06/17 16:48

1007-1 (7052089-07) Drinking Water (Grab) Sampled: 05/17/17 06:51 Received: 05/22/17 09:20

| Analyte | Result | PQL | Units | Dilution | Batch | Prepared | Analyzed | Method | Notes |
|--|--------|-----|-------|----------|-------|----------|----------|--------|-------|
| Legend Technical Services of Arizona, Inc. | | | | | | | | | |

Total Metals

| | | | | | | | | |
|------|-----|-----|------|---|---------|----------------|----------------|-----------|
| Lead | 6.1 | 5.0 | ug/L | 1 | B7E1984 | 05/24/17 16:02 | 05/26/17 10:16 | EPA 200.8 |
|------|-----|-----|------|---|---------|----------------|----------------|-----------|

1007-2 (7052089-08) Drinking Water (Grab) Sampled: 05/17/17 06:50 Received: 05/22/17 09:20

| Analyte | Result | PQL | Units | Dilution | Batch | Prepared | Analyzed | Method | Notes |
|--|--------|-----|-------|----------|-------|----------|----------|--------|-------|
| Legend Technical Services of Arizona, Inc. | | | | | | | | | |

Total Metals

| | | | | | | | | |
|------|------|-----|------|---|---------|----------------|----------------|-----------|
| Lead | <5.0 | 5.0 | ug/L | 1 | B7E1984 | 05/24/17 16:02 | 05/26/17 10:28 | EPA 200.8 |
|------|------|-----|------|---|---------|----------------|----------------|-----------|

1008 (7052089-09) Drinking Water (Grab) Sampled: 05/17/17 07:10 Received: 05/22/17 09:20

| Analyte | Result | PQL | Units | Dilution | Batch | Prepared | Analyzed | Method | Notes |
|--|--------|-----|-------|----------|-------|----------|----------|--------|-------|
| Legend Technical Services of Arizona, Inc. | | | | | | | | | |

Total Metals

| | | | | | | | | |
|------|------|-----|------|---|---------|----------------|----------------|-----------|
| Lead | <5.0 | 5.0 | ug/L | 1 | B7E1984 | 05/24/17 16:02 | 05/26/17 10:32 | EPA 200.8 |
|------|------|-----|------|---|---------|----------------|----------------|-----------|

1009 (7052089-10) Drinking Water (Grab) Sampled: 05/18/17 06:11 Received: 05/22/17 09:20

| Analyte | Result | PQL | Units | Dilution | Batch | Prepared | Analyzed | Method | Notes |
|--|--------|-----|-------|----------|-------|----------|----------|--------|-------|
| Legend Technical Services of Arizona, Inc. | | | | | | | | | |

Total Metals

| | | | | | | | | |
|------|------|-----|------|---|---------|----------------|----------------|-----------|
| Lead | <5.0 | 5.0 | ug/L | 1 | B7E1984 | 05/24/17 16:02 | 05/26/17 10:36 | EPA 200.8 |
|------|------|-----|------|---|---------|----------------|----------------|-----------|

1013 (7052089-11) Drinking Water (Grab) Sampled: 05/11/17 06:04 Received: 05/22/17 09:20

| Analyte | Result | PQL | Units | Dilution | Batch | Prepared | Analyzed | Method | Notes |
|--|--------|-----|-------|----------|-------|----------|----------|--------|-------|
| Legend Technical Services of Arizona, Inc. | | | | | | | | | |

Total Metals

| | | | | | | | | |
|------|------|-----|------|---|---------|----------------|----------------|-----------|
| Lead | <5.0 | 5.0 | ug/L | 1 | B7E1984 | 05/24/17 16:02 | 05/26/17 10:39 | EPA 200.8 |
|------|------|-----|------|---|---------|----------------|----------------|-----------|

1014 (7052089-12) Drinking Water (Grab) Sampled: 05/11/17 06:12 Received: 05/22/17 09:20

| Analyte | Result | PQL | Units | Dilution | Batch | Prepared | Analyzed | Method | Notes |
|--|--------|-----|-------|----------|-------|----------|----------|--------|-------|
| Legend Technical Services of Arizona, Inc. | | | | | | | | | |

Total Metals

| | | | | | | | | |
|------|------|-----|------|---|---------|----------------|----------------|-----------|
| Lead | <5.0 | 5.0 | ug/L | 1 | B7E1984 | 05/24/17 16:02 | 05/26/17 10:43 | EPA 200.8 |
|------|------|-----|------|---|---------|----------------|----------------|-----------|

1015 (7052089-13) Drinking Water (Grab) Sampled: 05/17/17 06:46 Received: 05/22/17 09:20

| Analyte | Result | PQL | Units | Dilution | Batch | Prepared | Analyzed | Method | Notes |
|--|--------|-----|-------|----------|-------|----------|----------|--------|-------|
| Legend Technical Services of Arizona, Inc. | | | | | | | | | |

Total Metals

| | | | | | | | | |
|------|------|-----|------|---|---------|----------------|----------------|-----------|
| Lead | <5.0 | 5.0 | ug/L | 1 | B7E1984 | 05/24/17 16:02 | 05/26/17 10:55 | EPA 200.8 |
|------|------|-----|------|---|---------|----------------|----------------|-----------|

1016-1 (7052089-14) Drinking Water (Grab) Sampled: 05/11/17 06:15 Received: 05/22/17 09:20

| Analyte | Result | PQL | Units | Dilution | Batch | Prepared | Analyzed | Method | Notes |
|--|--------|-----|-------|----------|-------|----------|----------|--------|-------|
| Legend Technical Services of Arizona, Inc. | | | | | | | | | |

The results in this report apply to the samples analyzed in accordance with the chain of custody document. This analytical report must be reproduced in its entirety.

David A. Burchard
Arizona Department of Environmental Quality, PHX
1110 W. Washington Street
Phoenix, AZ85007

Project: School Lead Testing Screening
Project Number: Canyon Del Oro High School

Reported:
06/06/17 16:48

1016-1 (7052089-14) Drinking Water (Grab) Sampled: 05/11/17 06:15 Received: 05/22/17 09:20

| Analyte | Result | PQL | Units | Dilution | Batch | Prepared | Analyzed | Method | Notes |
|--|--------|-----|-------|----------|-------|----------|----------|--------|-------|
| Legend Technical Services of Arizona, Inc. | | | | | | | | | |

Total Metals

| | | | | | | | | |
|------|------|-----|------|---|---------|----------------|----------------|-----------|
| Lead | <5.0 | 5.0 | ug/L | 1 | B7E1984 | 05/24/17 16:02 | 05/26/17 10:58 | EPA 200.8 |
|------|------|-----|------|---|---------|----------------|----------------|-----------|

1016-2 (7052089-15) Drinking Water (Grab) Sampled: 05/11/17 06:16 Received: 05/22/17 09:20

| Analyte | Result | PQL | Units | Dilution | Batch | Prepared | Analyzed | Method | Notes |
|--|--------|-----|-------|----------|-------|----------|----------|--------|-------|
| Legend Technical Services of Arizona, Inc. | | | | | | | | | |

Total Metals

| | | | | | | | | |
|------|------|-----|------|---|---------|----------------|----------------|-----------|
| Lead | <5.0 | 5.0 | ug/L | 1 | B7E1984 | 05/24/17 16:02 | 05/26/17 11:02 | EPA 200.8 |
|------|------|-----|------|---|---------|----------------|----------------|-----------|

1017-1 (7052089-16) Drinking Water (Grab) Sampled: 05/11/17 05:53 Received: 05/22/17 09:20

| Analyte | Result | PQL | Units | Dilution | Batch | Prepared | Analyzed | Method | Notes |
|--|--------|-----|-------|----------|-------|----------|----------|--------|-------|
| Legend Technical Services of Arizona, Inc. | | | | | | | | | |

Total Metals

| | | | | | | | | |
|------|------|-----|------|---|---------|----------------|----------------|-----------|
| Lead | <5.0 | 5.0 | ug/L | 1 | B7E1984 | 05/24/17 16:02 | 05/26/17 11:06 | EPA 200.8 |
|------|------|-----|------|---|---------|----------------|----------------|-----------|

1017-2 (7052089-17) Drinking Water (Grab) Sampled: 05/11/17 05:57 Received: 05/22/17 09:20

| Analyte | Result | PQL | Units | Dilution | Batch | Prepared | Analyzed | Method | Notes |
|--|--------|-----|-------|----------|-------|----------|----------|--------|-------|
| Legend Technical Services of Arizona, Inc. | | | | | | | | | |

Total Metals

| | | | | | | | | |
|------|------|-----|------|---|---------|----------------|----------------|-----------|
| Lead | <5.0 | 5.0 | ug/L | 1 | B7E1984 | 05/24/17 16:02 | 05/26/17 11:10 | EPA 200.8 |
|------|------|-----|------|---|---------|----------------|----------------|-----------|

1018 (7052089-18) Drinking Water (Grab) Sampled: 05/17/17 07:00 Received: 05/22/17 09:20

| Analyte | Result | PQL | Units | Dilution | Batch | Prepared | Analyzed | Method | Notes |
|--|--------|-----|-------|----------|-------|----------|----------|--------|-------|
| Legend Technical Services of Arizona, Inc. | | | | | | | | | |

Total Metals

| | | | | | | | | |
|------|------|-----|------|---|---------|----------------|----------------|-----------|
| Lead | <5.0 | 5.0 | ug/L | 1 | B7F1001 | 06/02/17 09:00 | 06/02/17 15:24 | EPA 200.8 |
|------|------|-----|------|---|---------|----------------|----------------|-----------|

1020 (7052089-19) Drinking Water (Grab) Sampled: 05/11/17 06:27 Received: 05/22/17 09:20

| Analyte | Result | PQL | Units | Dilution | Batch | Prepared | Analyzed | Method | Notes |
|--|--------|-----|-------|----------|-------|----------|----------|--------|-------|
| Legend Technical Services of Arizona, Inc. | | | | | | | | | |

Total Metals

| | | | | | | | | |
|------|------|-----|------|---|---------|----------------|----------------|-----------|
| Lead | <5.0 | 5.0 | ug/L | 1 | B7F1001 | 06/02/17 09:00 | 06/02/17 15:27 | EPA 200.8 |
|------|------|-----|------|---|---------|----------------|----------------|-----------|

1021-1 (7052089-20) Drinking Water (Grab) Sampled: 05/18/17 06:20 Received: 05/22/17 09:20

| Analyte | Result | PQL | Units | Dilution | Batch | Prepared | Analyzed | Method | Notes |
|--|--------|-----|-------|----------|-------|----------|----------|--------|-------|
| Legend Technical Services of Arizona, Inc. | | | | | | | | | |

Total Metals

| | | | | | | | | |
|------|------|-----|------|---|---------|----------------|----------------|-----------|
| Lead | <5.0 | 5.0 | ug/L | 1 | B7F1001 | 06/02/17 09:00 | 06/02/17 15:29 | EPA 200.8 |
|------|------|-----|------|---|---------|----------------|----------------|-----------|

1021-2 (7052089-21) Drinking Water (Grab) Sampled: 05/17/17 06:22 Received: 05/22/17 09:20

| Analyte | Result | PQL | Units | Dilution | Batch | Prepared | Analyzed | Method | Notes |
|--|--------|-----|-------|----------|-------|----------|----------|--------|-------|
| Legend Technical Services of Arizona, Inc. | | | | | | | | | |

The results in this report apply to the samples analyzed in accordance with the chain of custody document. This analytical report must be reproduced in its entirety.

David A. Burchard
Arizona Department of Environmental Quality, PHX
1110 W. Washington Street
Phoenix, AZ85007

Project: School Lead Testing Screening
Project Number: Canyon Del Oro High School

Reported:
06/06/17 16:48

1021-2 (7052089-21) Drinking Water (Grab) Sampled: 05/17/17 06:22 Received: 05/22/17 09:20

| Analyte | Result | PQL | Units | Dilution | Batch | Prepared | Analyzed | Method | Notes |
|--|--------|-----|-------|----------|-------|----------|----------|--------|-------|
| Legend Technical Services of Arizona, Inc. | | | | | | | | | |

Total Metals

| | | | | | | | | |
|------|-----|-----|------|---|---------|----------------|----------------|-----------|
| Lead | 5.5 | 5.0 | ug/L | 1 | B7F1001 | 06/02/17 09:00 | 06/02/17 15:32 | EPA 200.8 |
|------|-----|-----|------|---|---------|----------------|----------------|-----------|

1022-1 (7052089-22) Drinking Water (Grab) Sampled: 05/11/17 06:44 Received: 05/22/17 09:20

| Analyte | Result | PQL | Units | Dilution | Batch | Prepared | Analyzed | Method | Notes |
|--|--------|-----|-------|----------|-------|----------|----------|--------|-------|
| Legend Technical Services of Arizona, Inc. | | | | | | | | | |

Total Metals

| | | | | | | | | |
|------|-----|-----|------|---|---------|----------------|----------------|-----------|
| Lead | 7.5 | 5.0 | ug/L | 1 | B7F1001 | 06/02/17 09:00 | 06/02/17 15:34 | EPA 200.8 |
|------|-----|-----|------|---|---------|----------------|----------------|-----------|

1022-2 (7052089-23) Drinking Water (Grab) Sampled: 05/11/17 06:45 Received: 05/22/17 09:20

| Analyte | Result | PQL | Units | Dilution | Batch | Prepared | Analyzed | Method | Notes |
|--|--------|-----|-------|----------|-------|----------|----------|--------|-------|
| Legend Technical Services of Arizona, Inc. | | | | | | | | | |

Total Metals

| | | | | | | | | |
|------|------|-----|------|---|---------|----------------|----------------|-----------|
| Lead | <5.0 | 5.0 | ug/L | 1 | B7F1001 | 06/02/17 09:00 | 06/02/17 15:42 | EPA 200.8 |
|------|------|-----|------|---|---------|----------------|----------------|-----------|

1023-1 (7052089-24) Drinking Water (Grab) Sampled: 05/17/17 06:28 Received: 05/22/17 09:20

| Analyte | Result | PQL | Units | Dilution | Batch | Prepared | Analyzed | Method | Notes |
|--|--------|-----|-------|----------|-------|----------|----------|--------|-------|
| Legend Technical Services of Arizona, Inc. | | | | | | | | | |

Total Metals

| | | | | | | | | |
|------|----|-----|------|---|---------|----------------|----------------|-----------|
| Lead | 13 | 5.0 | ug/L | 1 | B7F1001 | 06/02/17 09:00 | 06/02/17 15:44 | EPA 200.8 |
|------|----|-----|------|---|---------|----------------|----------------|-----------|

1023-2 (7052089-25) Drinking Water (Grab) Sampled: 05/17/17 06:30 Received: 05/22/17 09:20

| Analyte | Result | PQL | Units | Dilution | Batch | Prepared | Analyzed | Method | Notes |
|--|--------|-----|-------|----------|-------|----------|----------|--------|-------|
| Legend Technical Services of Arizona, Inc. | | | | | | | | | |

Total Metals

| | | | | | | | | |
|------|-----|-----|------|---|---------|----------------|----------------|-----------|
| Lead | 6.5 | 5.0 | ug/L | 1 | B7F1001 | 06/02/17 09:00 | 06/02/17 15:47 | EPA 200.8 |
|------|-----|-----|------|---|---------|----------------|----------------|-----------|

1024 (7052089-26) Drinking Water (Grab) Sampled: 05/11/17 06:32 Received: 05/22/17 09:20

| Analyte | Result | PQL | Units | Dilution | Batch | Prepared | Analyzed | Method | Notes |
|--|--------|-----|-------|----------|-------|----------|----------|--------|-------|
| Legend Technical Services of Arizona, Inc. | | | | | | | | | |

Total Metals

| | | | | | | | | |
|------|----|-----|------|---|---------|----------------|----------------|-----------|
| Lead | 10 | 5.0 | ug/L | 1 | B7F1001 | 06/02/17 09:00 | 06/02/17 15:49 | EPA 200.8 |
|------|----|-----|------|---|---------|----------------|----------------|-----------|

1025 (7052089-27) Drinking Water (Grab) Sampled: 05/11/17 05:57 Received: 05/22/17 09:20

| Analyte | Result | PQL | Units | Dilution | Batch | Prepared | Analyzed | Method | Notes |
|--|--------|-----|-------|----------|-------|----------|----------|--------|-------|
| Legend Technical Services of Arizona, Inc. | | | | | | | | | |

Total Metals

| | | | | | | | | |
|------|------|-----|------|---|---------|----------------|----------------|-----------|
| Lead | <5.0 | 5.0 | ug/L | 1 | B7F1001 | 06/02/17 09:00 | 06/02/17 15:52 | EPA 200.8 |
|------|------|-----|------|---|---------|----------------|----------------|-----------|

1038 (7052089-28) Drinking Water (Grab) Sampled: 05/17/17 06:33 Received: 05/22/17 09:20

| Analyte | Result | PQL | Units | Dilution | Batch | Prepared | Analyzed | Method | Notes |
|--|--------|-----|-------|----------|-------|----------|----------|--------|-------|
| Legend Technical Services of Arizona, Inc. | | | | | | | | | |

The results in this report apply to the samples analyzed in accordance with the chain of custody document. This analytical report must be reproduced in its entirety.

David A. Burchard
Arizona Department of Environmental Quality, PHX
1110 W. Washington Street
Phoenix, AZ85007

Project: School Lead Testing Screening
Project Number: Canyon Del Oro High School

Reported:
06/06/17 16:48

1038 (7052089-28) Drinking Water (Grab) Sampled: 05/17/17 06:33 Received: 05/22/17 09:20

| Analyte | Result | PQL | Units | Dilution | Batch | Prepared | Analyzed | Method | Notes |
|--|--------|-----|-------|----------|-------|----------|----------|--------|-------|
| Legend Technical Services of Arizona, Inc. | | | | | | | | | |

Total Metals

| | | | | | | | | |
|------|----|-----|------|---|---------|----------------|----------------|-----------|
| Lead | 11 | 5.0 | ug/L | 1 | B7F1001 | 06/02/17 09:00 | 06/02/17 15:59 | EPA 200.8 |
|------|----|-----|------|---|---------|----------------|----------------|-----------|

1039 (7052089-29) Drinking Water (Grab) Sampled: 05/17/17 06:25 Received: 05/22/17 09:20

| Analyte | Result | PQL | Units | Dilution | Batch | Prepared | Analyzed | Method | Notes |
|--|--------|-----|-------|----------|-------|----------|----------|--------|-------|
| Legend Technical Services of Arizona, Inc. | | | | | | | | | |

Total Metals

| | | | | | | | | |
|------|-----|-----|------|---|---------|----------------|----------------|-----------|
| Lead | 5.5 | 5.0 | ug/L | 1 | B7F1001 | 06/02/17 09:00 | 06/02/17 16:02 | EPA 200.8 |
|------|-----|-----|------|---|---------|----------------|----------------|-----------|

1042 (7052089-30) Drinking Water (Grab) Sampled: 05/11/17 06:30 Received: 05/22/17 09:20

| Analyte | Result | PQL | Units | Dilution | Batch | Prepared | Analyzed | Method | Notes |
|--|--------|-----|-------|----------|-------|----------|----------|--------|-------|
| Legend Technical Services of Arizona, Inc. | | | | | | | | | |

Total Metals

| | | | | | | | | |
|------|-----|-----|------|---|---------|----------------|----------------|-----------|
| Lead | 5.8 | 5.0 | ug/L | 1 | B7F1001 | 06/02/17 09:00 | 06/02/17 16:04 | EPA 200.8 |
|------|-----|-----|------|---|---------|----------------|----------------|-----------|

1049 (7052089-31) Drinking Water (Grab) Sampled: 05/11/17 06:26 Received: 05/22/17 09:20

| Analyte | Result | PQL | Units | Dilution | Batch | Prepared | Analyzed | Method | Notes |
|--|--------|-----|-------|----------|-------|----------|----------|--------|-------|
| Legend Technical Services of Arizona, Inc. | | | | | | | | | |

Total Metals

| | | | | | | | | |
|------|------|-----|------|---|---------|----------------|----------------|-----------|
| Lead | <5.0 | 5.0 | ug/L | 1 | B7F1001 | 06/02/17 09:00 | 06/02/17 16:12 | EPA 200.8 |
|------|------|-----|------|---|---------|----------------|----------------|-----------|

Sample Condition Upon Receipt:

Temperature: 25.50 °C

All samples were received in acceptable condition unless noted otherwise in the case narrative.

Case Narrative:

Holding Times: All holding times were met unless otherwise qualified.

QA/QC Criteria: All analyses met method requirements unless otherwise qualified.

Accreditations: AZ(PHX)0004, AZ(TUC)0004, AIHA#102982, CDC ELITE Member.

Accreditation is applicable only to the test methods specified on each scope of accreditation held by LEGEND.

Comments: There were no problems encountered during the processing of the samples, unless otherwise noted.
All samples were analyzed on a "wet" basis unless designated as "dry weight".

Lead samples are preserved with Nitric acid upon receipt at the laboratory. However, some samples were analyzed prior to the 16 hour preservation waiting period due to urgency of analysis, per the client's request. Results are not for compliance purpose.

Notes and Definitions

The results in this report apply to the samples analyzed in accordance with the chain of custody document. This analytical report must be reproduced in its entirety.

70 52089-01

ADEQ Public School Drinking Water Lead Screening Program
Sampling Plan & Collection Log

Collection Log
for experienced sample collectors

Complete copy of this form for each sample collected. Your drinking water sample cannot be tested unless a copy of this form is shipped to the lab with each sample. In addition, the sample cannot be tested unless the Sample Identification Number matches the number on the sample container label.

- ☒ Check this box to confirm that **water had not been used at this tap or other taps in the area for 6 hours** and **no** flushing was done prior to sampling

| | |
|---|-------------------------------|
| Name of School District | Amphitheater Unified District |
| School Name | Canyon Del Oro High School |
| Building (name/number) | Admin. |
| Type of Fixture (tap, drinking fountain etc.) | DRINKING |
| Location of Fixture (example, room number) | W. HALLWAY |
| Sample Identification Number (Write this number on the sample container and on this sheet) | 1001 |
| Date of Collection | 5-11-17 |
| Time of Collection | 5:50 AM |
| Printed Name of Sample Collector | KEN RAMIREZ |
| Signature Sample Collector | Ken Ramirez |

Notes Sample collector:

| | |
|---|-------------------------|
| For Lab use only | |
| Analyze this drinking water sample for lead | |
| Date and Time Lab received | 5/22/17 0920 |
| Signature | PD |
| Notes: | preserved @ lab 5/22/17 |

For relinquishing samples upon delivery to labs only

Relinquished date and signature _____

These samples were collected for lead screening purposes only and cannot be used for compliance.

<http://www.azdeq.gov/LeadScreeningProg>

Page 2 of 2

7052089-02

ADEQ Public School Drinking Water Lead Screening Program
Sampling Plan & Collection Log

Collection Log
for experienced sample collectors

Complete copy of this form for each sample collected. Your drinking water sample cannot be tested unless a copy of this form is shipped to the lab with each sample. In addition, the sample cannot be tested unless the Sample Identification Number matches the number on the sample container label.

☒ Check this box to confirm that **water had not been used at this tap or other taps in the area for 6 hours** and **no** flushing was done prior to sampling

| | |
|---|-------------------------------|
| Name of School District | Amphitheater Unified District |
| School Name | Canyon Del Oro High School |
| Building (name/number) | Autoshop J |
| Type of Fixture (tap, drinking fountain etc.) | DRINKING |
| Location of Fixture (example, room number) | Rm 506 |
| Sample Identification Number (Write this number on the sample container and on this sheet) | 1004-1 |
| Date of Collection | 5-11-17 |
| Time of Collection | 6:37 A.M. |
| Printed Name of Sample Collector | KEN RAMIREZ |
| Signature Sample Collector | Ken Ramirez |

Notes Sample collector:

| | |
|---|-------------------------|
| For Lab use only | |
| Analyze this drinking water sample for lead | |
| Date and Time Lab received | 5/22/17 0920 |
| Signature | RZ |
| Notes: | preserved @ lab 5/22/17 |

For relinquishing samples upon delivery to labs only

Relinquished date and signature _____

These samples were collected for lead screening purposes only and cannot be used for compliance.

7052089-03

ADEQ Public School Drinking Water Lead Screening Program
Sampling Plan & Collection Log

Collection Log
for experienced sample collectors

Complete copy of this form for each sample collected. Your drinking water sample cannot be tested unless a copy of this form is shipped to the lab with each sample. In addition, the sample cannot be tested unless the Sample Identification Number matches the number on the sample container label.

☒ Check this box to confirm that **water had not been used at this tap or other taps in the area for 6 hours** and **no** flushing was done prior to sampling

| | |
|--|-------------------------------|
| Name of School District | Amphitheater Unified District |
| School Name | Canyon Del Oro High School |
| Building (name/number) | Auto shop J |
| Type of Fixture (tap, drinking fountain etc.) | DRINKING |
| Location of Fixture (example, room number) | Auto shop |
| Sample Identification Number (Write this number on the sample container and on this sheet) | 1004-2 |
| Date of Collection | 5-11-17 |
| Time of Collection | 6:38 A.M |
| Printed Name of Sample Collector | KEN RAMIREZ |
| Signature Sample Collector | Ken Ramirez |

Notes Sample collector:

| | |
|---|--------------|
| For Lab use only | |
| Analyze this drinking water sample for lead | |
| Date and Time Lab received | 5/22/17 0920 |
| Signature | 22 |
| Notes: preserved @ lab 5/22/17 | |

For relinquishing samples upon delivery to labs only

Relinquished date and signature _____

These samples were collected for lead screening purposes only and cannot be used for compliance.

7052089-03

ADEQ Public School Drinking Water Lead Screening Program
Sampling Plan & Collection Log

Collection Log
for experienced sample collectors

Complete copy of this form for each sample collected. Your drinking water sample cannot be tested unless a copy of this form is shipped to the lab with each sample. In addition, the sample cannot be tested unless the Sample Identification Number matches the number on the sample container label.

☒ Check this box to confirm that **water had not been used at this tap or other taps in the area for 6 hours** and **no** flushing was done prior to sampling

| | |
|---|-------------------------------|
| Name of School District | Amphitheater Unified District |
| School Name | Canyon Del Oro High School |
| Building (name/number) | BOOKSTORE |
| Type of Fixture (tap, drinking fountain etc.) | DRINKING |
| Location of Fixture (example, room number) | S. of Building outside |
| Sample Identification Number (Write this number on the sample container and on this sheet) | 1005-1 |
| Date of Collection | 5-11-17 |
| Time of Collection | 6:08 A.M. |
| Printed Name of Sample Collector | Ken Ramirez |
| Signature Sample Collector | Ken Ramirez |

Notes Sample collector:

| For Lab use only | |
|---|--------------------|
| Analyze this drinking water sample for lead | |
| Date and Time Lab received | 5/22/17 0920 |
| Signature | <i>[Signature]</i> |
| Notes: preserved @ LUD 0920 & 5/22/17 5/22/17 | |

For relinquishing samples upon delivery to labs only

Relinquished date and signature _____

These samples were collected for lead screening purposes only and cannot be used for compliance.

7052089-05

ADEQ Public School Drinking Water Lead Screening Program
Sampling Plan & Collection Log

Collection Log
for experienced sample collectors

Complete copy of this form for each sample collected. Your drinking water sample cannot be tested unless a copy of this form is shipped to the lab with each sample. In addition, the sample cannot be tested unless the Sample Identification Number matches the number on the sample container label.

☒ Check this box to confirm that **water had not been used at this tap or other taps in the area for 6 hours** and **no** flushing was done prior to sampling

| | |
|---|-------------------------------|
| Name of School District | Amphitheater Unified District |
| School Name | Canyon Del Oro High School |
| Building (name/number) | BOOKSTORE |
| Type of Fixture (tap, drinking fountain etc.) | DRINKING |
| Location of Fixture (example, room number) | BOOKSTORE |
| Sample Identification Number (Write this number on the sample container and on this sheet) | 1005-2 |
| Date of Collection | 5-11-17 |
| Time of Collection | 7:10 A.M. |
| Printed Name of Sample Collector | KEN RAMIREZ |
| Signature Sample Collector | Ken Ramirez |

Notes Sample collector:

| For Lab use only | |
|---|--------------|
| Analyze this drinking water sample for lead | |
| Date and Time Lab received | 5/22/17 0920 |
| Signature | RD |
| Notes: preserved @ lab 5/22/17 | |

For relinquishing samples upon delivery to labs only

Relinquished date and signature _____

These samples were collected for lead screening purposes only and cannot be used for compliance.

7052089-06

ADEQ Public School Drinking Water Lead Screening Program
Sampling Plan & Collection Log

Collection Log

for experienced sample collectors

Complete copy of this form for each sample collected. Your drinking water sample cannot be tested unless a copy of this form is shipped to the lab with each sample. In addition, the sample cannot be tested unless the Sample Identification Number matches the number on the sample container label.

☒ Check this box to confirm that **water had not been used at this tap or other taps in the area for 6 hours** and **no** flushing was done prior to sampling

| | |
|--|-----------------------------------|
| Name of School District | Amphitheater Unified District |
| School Name | Canyon Del Oro High School |
| Building (name/number) | ED Center T 1 st Floor |
| Type of Fixture (tap, drinking fountain etc.) | DRINKING |
| Location of Fixture (example, room number) | 1 st Floor 5 outside |
| Sample Identification Number (Write this number on the sample container and on this sheet) | 1006 |
| Date of Collection | 5-17-17 |
| Time of Collection | 6:43 A.M |
| Printed Name of Sample Collector | Ken Ramirez |
| Signature Sample Collector | Ken Ramirez |

Notes Sample collector:

| For Lab use only | |
|---|-------------------------|
| Analyze this drinking water sample for lead | |
| Date and Time Lab received | 5/22/17 0920 |
| Signature | R 2 |
| Notes: | preserved @ LMO 5/22/17 |

For relinquishing samples upon delivery to labs only

Relinquished date and signature _____

These samples were collected for lead screening purposes only and cannot be used for compliance.

7052089-07

ADEQ Public School Drinking Water Lead Screening Program
Sampling Plan & Collection Log

Collection Log

for experienced sample collectors

Complete copy of this form for each sample collected. Your drinking water sample cannot be tested unless a copy of this form is shipped to the lab with each sample. In addition, the sample cannot be tested unless the Sample Identification Number matches the number on the sample container label.

☒ Check this box to confirm that **water had not been used at this tap or other taps in the area for 6 hours** and **no** flushing was done prior to sampling

Name of School District
School Name
Building (name/number)
Type of Fixture (tap, drinking fountain etc.)
Location of Fixture (example, room number)
Sample Identification Number (**Write this number on the sample container and on this sheet**)
Date of Collection
Time of Collection
Printed Name of Sample Collector
Signature Sample Collector

| |
|-------------------------------|
| Amphitheater Unified District |
| Canyon Del Oro High School |
| FINE ARTS K |
| DRINKING + SINK |
| Rm 903 |
| 1007-1 |
| 5-17-17 |
| 6:51 AM |
| KEN RAMIREZ |
| Ken Ramirez |

Notes Sample collector:

| For Lab use only | |
|---|--------------|
| Analyze this drinking water sample for lead | |
| Date and Time Lab received | 5/22/17 0920 |
| Signature | [Signature] |
| Notes: preserved @ lab 5/22/17 | |

For relinquishing samples upon delivery to labs only

Relinquished date and signature _____

These samples were collected for lead screening purposes only and cannot be used for compliance.

7052089-08

ADEQ Public School Drinking Water Lead Screening Program
Sampling Plan & Collection Log

Collection Log

for experienced sample collectors

Complete copy of this form for each sample collected. Your drinking water sample cannot be tested unless a copy of this form is shipped to the lab with each sample. In addition, the sample cannot be tested unless the Sample Identification Number matches the number on the sample container label.

☒ Check this box to confirm that **water had not been used at this tap or other taps in the area for 6 hours** and **no** flushing was done prior to sampling

Name of School District
School Name
Building (name/number)
Type of Fixture (tap, drinking fountain etc.)
Location of Fixture (example, room number)
Sample Identification Number (**Write this number on the sample container and on this sheet**)
Date of Collection
Time of Collection
Printed Name of Sample Collector
Signature Sample Collector

| |
|-------------------------------|
| Amphitheater Unified District |
| Canyon Del Oro High School |
| FINE ARTS K |
| DRINKING |
| FRONT Lobby |
| 1007-2 |
| 5-17-17 |
| 6:50 A.M. |
| KEN RAMIREZ |
| Ken Ramirez |

Notes Sample collector:

| For Lab use only | |
|---|--------------|
| Analyze this drinking water sample for lead | |
| Date and Time Lab received | 5/22/17 0920 |
| Signature | P. J. |
| Notes: preserved @ lab 5/22/17 | |

For relinquishing samples upon delivery to labs only

Relinquished date and signature _____

These samples were collected for lead screening purposes only and cannot be used for compliance.

7052089-09

ADEQ Public School Drinking Water Lead Screening Program
Sampling Plan & Collection Log

Collection Log
for experienced sample collectors

Complete copy of this form for each sample collected. Your drinking water sample cannot be tested unless a copy of this form is shipped to the lab with each sample. In addition, the sample cannot be tested unless the Sample Identification Number matches the number on the sample container label.

☒ Check this box to confirm that **water had not been used at this tap or other taps in the area for 6 hours** and **no** flushing was done prior to sampling

| | |
|---|--------------------------------|
| Name of School District | Amphitheater Unified District |
| School Name | Canyon Del Oro High School |
| Building (name/number) | SNACK BAR - Football, Restroom |
| Type of Fixture (tap, drinking fountain etc.) | DRINKING |
| Location of Fixture (example, room number) | OUTSIDE - EAST |
| Sample Identification Number (Write this number on the sample container and on this sheet) | 1008 |
| Date of Collection | 5-17-17 |
| Time of Collection | 7:10 A.M. |
| Printed Name of Sample Collector | KEN RAMIREZ |
| Signature Sample Collector | <i>Ken Ramirez</i> |

Notes Sample collector:

| For Lab use only | |
|---|--------------------|
| Analyze this drinking water sample for lead | |
| Date and Time Lab received | 5/22/17 0920 |
| Signature | <i>[Signature]</i> |
| Notes: presented @ Lab 5/22/17 | |

For relinquishing samples upon delivery to labs only

Relinquished date and signature _____

These samples were collected for lead screening purposes only and cannot be used for compliance.

7052089-10

ADEQ Public School Drinking Water Lead Screening Program
Sampling Plan & Collection Log

Collection Log

for experienced sample collectors

Complete copy of this form for each sample collected. Your drinking water sample cannot be tested unless a copy of this form is shipped to the lab with each sample. In addition, the sample cannot be tested unless the Sample Identification Number matches the number on the sample container label.

☒ Check this box to confirm that **water had not been used at this tap or other taps in the area for 6 hours** and **no** flushing was done prior to sampling

Name of School District
School Name
Building (name/number)
Type of Fixture (tap, drinking fountain etc.)
Location of Fixture (example, room number)
Sample Identification Number (**Write this number on the sample container and on this sheet**)
Date of Collection
Time of Collection
Printed Name of Sample Collector
Signature Sample Collector

| |
|-------------------------------|
| Amphitheater Unified District |
| Canyon Del Oro High School |
| Gym ORIGINAL |
| DRINKING |
| Gym N.W. entrance |
| 1009 |
| 5-18-17 |
| 6:11 A.M. |
| KEN RAMIREZ |
| Ken Ramirez |

Notes Sample collector:

For Lab use only

Analyze this drinking water sample for lead

Date and Time Lab received

5/22/17 0920

Signature

P. 2

Notes:

preserved @ LWD 5/22/17

For relinquishing samples upon delivery to labs only

Relinquished date and signature

These samples were collected for lead screening purposes only and cannot be used for compliance.

7052029-11

ADEQ Public School Drinking Water Lead Screening Program
Sampling Plan & Collection Log

Collection Log
for experienced sample collectors

Complete copy of this form for each sample collected. Your drinking water sample cannot be tested unless a copy of this form is shipped to the lab with each sample. In addition, the sample cannot be tested unless the Sample Identification Number matches the number on the sample container label.

☒ Check this box to confirm that **water had not been used at this tap or other taps in the area for 6 hours** and **no** flushing was done prior to sampling

| | |
|---|-------------------------------|
| Name of School District | Amphitheater Unified District |
| School Name | Canyon Del Oro High School |
| Building (name/number) | LIBRARY ORIGINAL |
| Type of Fixture (tap, drinking fountain etc.) | DRINKING |
| Location of Fixture (example, room number) | LIBRARY ENTRANCE |
| Sample Identification Number (Write this number on the sample container and on this sheet) | 1013 |
| Date of Collection | 5-11-17 |
| Time of Collection | 6:04 A.M. |
| Printed Name of Sample Collector | REN RAMIREZ |
| Signature Sample Collector | Ren Ramirez |

Notes Sample collector:

| For Lab use only | |
|---|-------------------------|
| Analyze this drinking water sample for lead | |
| Date and Time Lab received | 5/22/17 0920 |
| Signature | RJ |
| Notes: | preserved @ lab 5/22/17 |

For relinquishing samples upon delivery to labs only

Relinquished date and signature _____

These samples were collected for lead screening purposes only and cannot be used for compliance.

7052089-12

ADEQ Public School Drinking Water Lead Screening Program
Sampling Plan & Collection Log

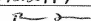
Collection Log
for experienced sample collectors

Complete copy of this form for each sample collected. Your drinking water sample cannot be tested unless a copy of this form is shipped to the lab with each sample. In addition, the sample cannot be tested unless the Sample Identification Number matches the number on the sample container label.

☒ Check this box to confirm that **water had not been used at this tap or other taps in the area for 6 hours** and **no** flushing was done prior to sampling

| | |
|--|-------------------------------|
| Name of School District | Amphitheater Unified District |
| School Name | Canyon Del Oro High School |
| Building (name/number) | MPR. |
| Type of Fixture (tap, drinking fountain etc.) | DRINKING |
| Location of Fixture (example, room number) | MPR S.E. HALL |
| Sample Identification Number (Write this number on the sample container and on this sheet) | 1014 |
| Date of Collection | 5-11-17 |
| Time of Collection | 6:12 A.M. |
| Printed Name of Sample Collector | KEN RAMIREZ |
| Signature Sample Collector | Ken Ramirez |

Notes Sample collector:

| For Lab use only | |
|---|---|
| Analyze this drinking water sample for lead | |
| Date and Time Lab received | 5/22/17 0920 |
| Signature |  |
| Notes: | preserved @ lab 5/22/17 |

For relinquishing samples upon delivery to labs only

Relinquished date and signature _____

These samples were collected for lead screening purposes only and cannot be used for compliance.

7052089-13

ADEQ Public School Drinking Water Lead Screening Program
Sampling Plan & Collection Log

Collection Log

for experienced sample collectors

Complete copy of this form for each sample collected. Your drinking water sample cannot be tested unless a copy of this form is shipped to the lab with each sample. In addition, the sample cannot be tested unless the Sample Identification Number matches the number on the sample container label.

☒ Check this box to confirm that **water had not been used at this tap or other taps in the area for 6 hours** and **no** flushing was done prior to sampling

Name of School District
School Name
Building (name/number)
Type of Fixture (tap, drinking fountain etc.)
Location of Fixture (example, room number)
Sample Identification Number (**Write this number on the sample container and on this sheet**)
Date of Collection
Time of Collection
Printed Name of Sample Collector
Signature Sample Collector

| |
|-------------------------------|
| Amphitheater Unified District |
| Canyon Del Oro High School |
| SCIENCE N |
| DRINKING |
| Rm 202 |
| 1015 |
| 5-17-17 |
| 6:46 A.M. |
| KEN RAMIREZ |
| Ken Ramirez |

Notes Sample collector:

| For Lab use only | |
|---|-------------------------|
| Analyze this drinking water sample for lead | |
| Date and Time Lab received | 5/22/17 0920 |
| Signature | AA |
| Notes: | preserved @ lab 5/22/17 |

For relinquishing samples upon delivery to labs only

Relinquished date and signature _____

These samples were collected for lead screening purposes only and cannot be used for compliance.

7052089-14

ADEQ Public School Drinking Water Lead Screening Program
Sampling Plan & Collection Log

Collection Log
for experienced sample collectors

Complete copy of this form for each sample collected. Your drinking water sample cannot be tested unless a copy of this form is shipped to the lab with each sample. In addition, the sample cannot be tested unless the Sample Identification Number matches the number on the sample container label.

☒ Check this box to confirm that **water had not been used at this tap or other taps in the area for 6 hours** and **no** flushing was done prior to sampling

| | |
|---|-------------------------------|
| Name of School District | Amphitheater Unified District |
| School Name | Canyon Del Oro High School |
| Building (name/number) | Weight Rm. B |
| Type of Fixture (tap, drinking fountain etc.) | DRINKING |
| Location of Fixture (example, room number) | W. DANCE RM. |
| Sample Identification Number (Write this number on the sample container and on this sheet) | 1016-1 |
| Date of Collection | 5-11-17 |
| Time of Collection | 6:15 A.M. |
| Printed Name of Sample Collector | KEN RAMIREZ |
| Signature Sample Collector | Ken Ramirez |

Notes Sample collector:

| | |
|---|--|
| For Lab use only | |
| Analyze this drinking water sample for lead | |
| Date and Time Lab received | |
| Signature | |
| Notes: | |

For relinquishing samples upon delivery to labs only

Relinquished date and signature _____

These samples were collected for lead screening purposes only and cannot be used for compliance.

7052089-15

ADEQ Public School Drinking Water Lead Screening Program
Sampling Plan & Collection Log

Collection Log
for experienced sample collectors

Complete copy of this form for each sample collected. Your drinking water sample cannot be tested unless a copy of this form is shipped to the lab with each sample. In addition, the sample cannot be tested unless the Sample Identification Number matches the number on the sample container label.

☒ Check this box to confirm that **water had not been used at this tap or other taps in the area for 6 hours** and **no** flushing was done prior to sampling

| | |
|--|-------------------------------|
| Name of School District | Amphitheater Unified District |
| School Name | Canyon Del Oro High School |
| Building (name/number) | Weight Rm B. |
| Type of Fixture (tap, drinking fountain etc.) | DRINKING |
| Location of Fixture (example, room number) | E. DANCE Rm. |
| Sample Identification Number (Write this number on the sample container and on this sheet) | 1016-2 |
| Date of Collection | 5-11-17 |
| Time of Collection | 6:16 A.M. |
| Printed Name of Sample Collector | KEN RAMIREZ |
| Signature Sample Collector | Ken Ramirez |

Notes Sample collector:

| For Lab use only | |
|---|-------------------------|
| Analyze this drinking water sample for lead | |
| Date and Time Lab received | 5/22/17 0920 |
| Signature | RZ |
| Notes: | presented @ LWO 5/22/17 |

For relinquishing samples upon delivery to labs only

Relinquished date and signature _____

These samples were collected for lead screening purposes only and cannot be used for compliance.

7052089-16

ADEQ Public School Drinking Water Lead Screening Program
Sampling Plan & Collection Log

Collection Log
for experienced sample collectors

Complete copy of this form for each sample collected. Your drinking water sample cannot be tested unless a copy of this form is shipped to the lab with each sample. In addition, the sample cannot be tested unless the Sample Identification Number matches the number on the sample container label.

☒ Check this box to confirm that **water had not been used at this tap or other taps in the area for 6 hours** and **no** flushing was done prior to sampling

| | |
|---|-------------------------------|
| Name of School District | Amphitheater Unified District |
| School Name | Canyon Del Oro High School |
| Building (name/number) | 100 Wing D |
| Type of Fixture (tap, drinking fountain etc.) | DRINKING |
| Location of Fixture (example, room number) | HALLWAY |
| Sample Identification Number (Write this number on the sample container and on this sheet) | 1017-1 |
| Date of Collection | 5-11-17 |
| Time of Collection | 5:53 A.M. |
| Printed Name of Sample Collector | KEN RAMIREZ |
| Signature Sample Collector | <i>Ken Ramirez</i> |

Notes Sample collector:

| | |
|---|-------------------------|
| For Lab use only | |
| Analyze this drinking water sample for lead | |
| Date and Time Lab received | 5/22/17 0920 |
| Signature | <i>Rd</i> |
| Notes: | preserved @ lab 5/22/17 |

For relinquishing samples upon delivery to labs only

Relinquished date and signature _____

These samples were collected for lead screening purposes only and cannot be used for compliance.

7052089-17

ADEQ Public School Drinking Water Lead Screening Program
Sampling Plan & Collection Log

Collection Log

for experienced sample collectors

Complete copy of this form for each sample collected. Your drinking water sample cannot be tested unless a copy of this form is shipped to the lab with each sample. In addition, the sample cannot be tested unless the Sample Identification Number matches the number on the sample container label.

☒ Check this box to confirm that **water had not been used at this tap or other taps in the area for 6 hours** and **no** flushing was done prior to sampling

| | |
|--|-------------------------------|
| Name of School District | Amphitheater Unified District |
| School Name | Canyon Del Oro High School |
| Building (name/number) | 100 wing D |
| Type of Fixture (tap, drinking fountain etc.) | SINK |
| Location of Fixture (example, room number) | Rm 104 |
| Sample Identification Number (Write this number on the sample container and on this sheet) | 1017-2 |
| Date of Collection | 5-11-17 |
| Time of Collection | 5:57 A.M. |
| Printed Name of Sample Collector | KEN RAMIREZ |
| Signature Sample Collector | Ken Ramirez |

Notes Sample collector:

| | |
|---|-------------------------|
| For Lab use only | |
| Analyze this drinking water sample for lead | |
| Date and Time Lab received | 5/22/17 0920 |
| Signature | 7-2 |
| Notes: | preserved @ lab 5/22/17 |

For relinquishing samples upon delivery to labs only

Relinquished date and signature _____

These samples were collected for lead screening purposes only and cannot be used for compliance.

7052089-18
ADEQ Public School Drinking Water Lead Screening Program
Sampling Plan & Collection Log

Collection Log
for experienced sample collectors

Complete copy of this form for each sample collected. Your drinking water sample cannot be tested unless a copy of this form is shipped to the lab with each sample. In addition, the sample cannot be tested unless the Sample Identification Number matches the number on the sample container label.

☒ Check this box to confirm that **water had not been used at this tap or other taps in the area for 6 hours** and **no** flushing was done prior to sampling

| | |
|---|-------------------------------|
| Name of School District | Amphitheater Unified District |
| School Name | Canyon Del Oro High School |
| Building (name/number) | 200 Wing F |
| Type of Fixture (tap, drinking fountain etc.) | SINK |
| Location of Fixture (example, room number) | Rm 201 |
| Sample Identification Number (Write this number on the sample container and on this sheet) | 1018 |
| Date of Collection | 5-17-17 |
| Time of Collection | 7:00 A.M. |
| Printed Name of Sample Collector | KEN RAMIREZ |
| Signature Sample Collector | <i>Ken Ramirez</i> |

Notes Sample collector:

| | |
|---|-------------------------|
| For Lab use only | |
| Analyze this drinking water sample for lead | |
| Date and Time Lab received | 5/22/17 0920 |
| Signature | <i>R</i> |
| Notes: | preserved @ Lab 5/22/17 |

For relinquishing samples upon delivery to labs only

Relinquished date and signature _____

These samples were collected for lead screening purposes only and cannot be used for compliance.

7052089-19

ADEQ Public School Drinking Water Lead Screening Program
Sampling Plan & Collection Log

Collection Log
for experienced sample collectors

Complete copy of this form for each sample collected. Your drinking water sample cannot be tested unless a copy of this form is shipped to the lab with each sample. In addition, the sample cannot be tested unless the Sample Identification Number matches the number on the sample container label.

☒ Check this box to confirm that **water had not been used at this tap or other taps in the area for 6 hours** and **no** flushing was done prior to sampling

| | |
|--|-------------------------------|
| Name of School District | Amphitheater Unified District |
| School Name | Canyon Del Oro High School |
| Building (name/number) | 300 Wing H |
| Type of Fixture (tap, drinking fountain etc.) | DRINKING |
| Location of Fixture (example, room number) | HALLWAY |
| Sample Identification Number (Write this number on the sample container and on this sheet) | 1020 |
| Date of Collection | 5-11-17 |
| Time of Collection | 6:27 A.M. |
| Printed Name of Sample Collector | KEN RAMIREZ |
| Signature Sample Collector | <i>Ken Ramirez</i> |

Notes Sample collector:

| For Lab use only | |
|---|-------------------------|
| Analyze this drinking water sample for lead | |
| Date and Time Lab received | 5/22/17 0920 |
| Signature | <i>R</i> |
| Notes: | preserved @ lab 5/22/17 |

For relinquishing samples upon delivery to labs only

Relinquished date and signature _____

These samples were collected for lead screening purposes only and cannot be used for compliance.

7052089-20
ADEQ Public School Drinking Water Lead Screening Program
Sampling Plan & Collection Log

Collection Log
for experienced sample collectors

Complete copy of this form for each sample collected. Your drinking water sample cannot be tested unless a copy of this form is shipped to the lab with each sample. In addition, the sample cannot be tested unless the Sample Identification Number matches the number on the sample container label.

☒ Check this box to confirm that **water had not been used at this tap or other taps in the area for 6 hours** and **no** flushing was done prior to sampling

| | |
|---|-------------------------------|
| Name of School District | Amphitheater Unified District |
| School Name | Canyon Del Oro High School |
| Building (name/number) | 501-502 J |
| Type of Fixture (tap, drinking fountain etc.) | DRINKING |
| Location of Fixture (example, room number) | Rm 501 |
| Sample Identification Number (Write this number on the sample container and on this sheet) | 1021-1 |
| Date of Collection | 5-18-17 |
| Time of Collection | 6:20 A.M. |
| Printed Name of Sample Collector | KEN RAMIREZ |
| Signature Sample Collector | <i>Ken Ramirez</i> |

Notes Sample collector:

| For Lab use only | |
|---|--------------|
| Analyze this drinking water sample for lead | |
| Date and Time Lab received | 5/22/17 0920 |
| Signature | <i>RJ</i> |
| Notes: PRESERVED @ Lab 5/22/17 | |

For relinquishing samples upon delivery to labs only

Relinquished date and signature _____

These samples were collected for lead screening purposes only and cannot be used for compliance.

7052089-21

ADEQ Public School Drinking Water Lead Screening Program
Sampling Plan & Collection Log

Collection Log

for experienced sample collectors

Complete copy of this form for each sample collected. Your drinking water sample cannot be tested unless a copy of this form is shipped to the lab with each sample. In addition, the sample cannot be tested unless the Sample Identification Number matches the number on the sample container label.

☒ Check this box to confirm that **water had not been used at this tap or other taps in the area for 6 hours** and **no** flushing was done prior to sampling

| | |
|---|-------------------------------|
| Name of School District | Amphitheater Unified District |
| School Name | Canyon Del Oro High School |
| Building (name/number) | 501-502 J |
| Type of Fixture (tap, drinking fountain etc.) | DRINKING |
| Location of Fixture (example, room number) | Rm 502 |
| Sample Identification Number (Write this number on the sample container and on this sheet) | 1021-2 |
| Date of Collection | 5-17-17 |
| Time of Collection | 6:22 A.M. |
| Printed Name of Sample Collector | KEN RAMIREZ |
| Signature Sample Collector | Ken Ramirez |

Notes Sample collector:

| | |
|---|-------------------------|
| For Lab use only | |
| Analyze this drinking water sample for lead | |
| Date and Time Lab received | 5/22/17 09:20 |
| Signature | R-2 |
| Notes: | Preserved @ Lab 5/22/17 |

For relinquishing samples upon delivery to labs only

Relinquished date and signature _____

These samples were collected for lead screening purposes only and cannot be used for compliance.

7052089-22

ADEQ Public School Drinking Water Lead Screening Program
Sampling Plan & Collection Log

Collection Log
for experienced sample collectors

Complete copy of this form for each sample collected. Your drinking water sample cannot be tested unless a copy of this form is shipped to the lab with each sample. In addition, the sample cannot be tested unless the Sample Identification Number matches the number on the sample container label.

☒ Check this box to confirm that **water had not been used at this tap or other taps in the area for 6 hours** and **no** flushing was done prior to sampling

| | |
|---|-------------------------------|
| Name of School District | Amphitheater Unified District |
| School Name | Canyon Del Oro High School |
| Building (name/number) | 503-505 J |
| Type of Fixture (tap, drinking fountain etc.) | DRINKING + SINK |
| Location of Fixture (example, room number) | Rm. 504 |
| Sample Identification Number (Write this number on the sample container and on this sheet) | 1022-1 |
| Date of Collection | 5-11-17 |
| Time of Collection | 6:44 A.M. |
| Printed Name of Sample Collector | KEN RAMIREZ |
| Signature Sample Collector | Ken Ramirez |

Notes Sample collector:

| | |
|---|-------------------------|
| For Lab use only | |
| Analyze this drinking water sample for lead | |
| Date and Time Lab received | 5/22/17 0920 |
| Signature | <i>[Signature]</i> |
| Notes: | preserved @ Lab 5/22/17 |

For relinquishing samples upon delivery to labs only

Relinquished date and signature _____

These samples were collected for lead screening purposes only and cannot be used for compliance.

7052089-23

ADEQ Public School Drinking Water Lead Screening Program
Sampling Plan & Collection Log

Collection Log
for experienced sample collectors

Complete copy of this form for each sample collected. Your drinking water sample cannot be tested unless a copy of this form is shipped to the lab with each sample. In addition, the sample cannot be tested unless the Sample Identification Number matches the number on the sample container label.

☒ Check this box to confirm that **water had not been used at this tap or other taps in the area for 6 hours** and **no** flushing was done prior to sampling

| | |
|---|-------------------------------|
| Name of School District | Amphitheater Unified District |
| School Name | Canyon Del Oro High School |
| Building (name/number) | 503-505 J |
| Type of Fixture (tap, drinking fountain etc.) | DRINKING |
| Location of Fixture (example, room number) | Rm 503 |
| Sample Identification Number (Write this number on the sample container and on this sheet) | 1022-2 |
| Date of Collection | 5-11-17 |
| Time of Collection | 6:45 A.M. |
| Printed Name of Sample Collector | KEN RAMIREZ |
| Signature Sample Collector | Ken Ramirez |

Notes Sample collector:

| | |
|---|-------------------------|
| For Lab use only | |
| Analyze this drinking water sample for lead | |
| Date and Time Lab received | 5/22/17 0920 |
| Signature | RZ |
| Notes: | preserved @ lab 5/22/17 |

For relinquishing samples upon delivery to labs only

Relinquished date and signature _____

These samples were collected for lead screening purposes only and cannot be used for compliance.

7052089-24

ADEQ Public School Drinking Water Lead Screening Program
Sampling Plan & Collection Log

Collection Log

for experienced sample collectors

Complete copy of this form for each sample collected. Your drinking water sample cannot be tested unless a copy of this form is shipped to the lab with each sample. In addition, the sample cannot be tested unless the Sample Identification Number matches the number on the sample container label.

☒ Check this box to confirm that **water had not been used at this tap or other taps in the area for 6 hours** and **no** flushing was done prior to sampling

Name of School District
School Name
Building (name/number)
Type of Fixture (tap, drinking fountain etc.)
Location of Fixture (example, room number)
Sample Identification Number (**Write this number on the sample container and on this sheet**)
Date of Collection
Time of Collection
Printed Name of Sample Collector
Signature Sample Collector

| |
|-------------------------------|
| Amphitheater Unified District |
| Canyon Del Oro High School |
| 600 Wing R First Floor |
| DRINKING |
| WORK ROOM |
| 1023-1 |
| 5-17-17 |
| 6:28 A.M. |
| KEN RAMIREZ |
| Ken Ramirez |

Notes Sample collector:

| For Lab use only | |
|---|--------------|
| Analyze this drinking water sample for lead | |
| Date and Time Lab received | 5/22/17 0920 |
| Signature | R |
| Notes: preserved @ lab 5/22/17 | |

For relinquishing samples upon delivery to labs only

Relinquished date and signature _____

These samples were collected for lead screening purposes only and cannot be used for compliance.

7052089-25

ADEQ Public School Drinking Water Lead Screening Program
Sampling Plan & Collection Log

Collection Log

for experienced sample collectors

Complete copy of this form for each sample collected. Your drinking water sample cannot be tested unless a copy of this form is shipped to the lab with each sample. In addition, the sample cannot be tested unless the Sample Identification Number matches the number on the sample container label.

☒ Check this box to confirm that **water had not been used at this tap or other taps in the area for 6 hours** and **no** flushing was done prior to sampling

Name of School District
School Name
Building (name/number)
Type of Fixture (tap, drinking fountain etc.)
Location of Fixture (example, room number)
Sample Identification Number (**Write this number on the sample container and on this sheet**)
Date of Collection
Time of Collection
Printed Name of Sample Collector
Signature Sample Collector

| |
|----------------------------------|
| Amphitheater Unified District |
| Canyon Del Oro High School |
| 600 Wing R 1 st Floor |
| DRINKING |
| NW Outside |
| 1023-2 |
| 5-17-17 |
| 6:30 A.M. |
| KEN RAMIREZ |
| Ken Ramirez |

Notes Sample collector:

| For Lab use only | |
|---|--------------|
| Analyze this drinking water sample for lead | |
| Date and Time Lab received | 5/22/17 0920 |
| Signature | R 2 |
| Notes: preserved @ lab 5/22/17 | |

For relinquishing samples upon delivery to labs only

Relinquished date and signature _____

These samples were collected for lead screening purposes only and cannot be used for compliance.

7052089-26

ADEQ Public School Drinking Water Lead Screening Program
Sampling Plan & Collection Log

Collection Log
for experienced sample collectors

Complete copy of this form for each sample collected. Your drinking water sample cannot be tested unless a copy of this form is shipped to the lab with each sample. In addition, the sample cannot be tested unless the Sample Identification Number matches the number on the sample container label.

☒ Check this box to confirm that **water had not been used at this tap or other taps in the area for 6 hours** and **no** flushing was done prior to sampling

| | |
|---|----------------------------------|
| Name of School District | Amphitheater Unified District |
| School Name | Canyon Del Oro High School |
| Building (name/number) | 700 WING G 1 st FLOOR |
| Type of Fixture (tap, drinking fountain etc.) | DRINKING |
| Location of Fixture (example, room number) | W. BREWERY |
| Sample Identification Number (Write this number on the sample container and on this sheet) | 1024 |
| Date of Collection | 5-11-17 |
| Time of Collection | 6:32 A.M. |
| Printed Name of Sample Collector | REN RAMIREZ |
| Signature Sample Collector | Ren Ramirez |

Notes Sample collector:

| | |
|---|-------------------------|
| For Lab use only | |
| Analyze this drinking water sample for lead | |
| Date and Time Lab received | 5/22/17 06:30 |
| Signature | TL |
| Notes: | preserved @ lab 5/22/17 |

For relinquishing samples upon delivery to labs only

Relinquished date and signature _____

These samples were collected for lead screening purposes only and cannot be used for compliance.

7052089-27

ADEQ Public School Drinking Water Lead Screening Program
Sampling Plan & Collection Log

Collection Log
for experienced sample collectors

Complete copy of this form for each sample collected. Your drinking water sample cannot be tested unless a copy of this form is shipped to the lab with each sample. In addition, the sample cannot be tested unless the Sample Identification Number matches the number on the sample container label.

☒ Check this box to confirm that **water had not been used at this tap or other taps in the area for 6 hours** and **no** flushing was done prior to sampling

| | |
|--|-------------------------------|
| Name of School District | Amphitheater Unified District |
| School Name | Canyon Del Oro High School |
| Building (name/number) | 800 Wing E |
| Type of Fixture (tap, drinking fountain etc.) | DRINKING |
| Location of Fixture (example, room number) | S.E. of Build. outside |
| Sample Identification Number (Write this number on the sample container and on this sheet) | 1025 |
| Date of Collection | 5-11-17 |
| Time of Collection | 5:57 A.M. |
| Printed Name of Sample Collector | Ken Ramirez |
| Signature Sample Collector | Ken Ramirez |

Notes Sample collector:

| | |
|---|-------------------------|
| For Lab use only | |
| Analyze this drinking water sample for lead | |
| Date and Time Lab received | 5/22/17 0920 |
| Signature | RJ |
| Notes: | preserved @ Lab 5/22/17 |

For relinquishing samples upon delivery to labs only

Relinquished date and signature _____

These samples were collected for lead screening purposes only and cannot be used for compliance.

7052089-28

ADEQ Public School Drinking Water Lead Screening Program
Sampling Plan & Collection Log

Collection Log

for experienced sample collectors

Complete copy of this form for each sample collected. Your drinking water sample cannot be tested unless a copy of this form is shipped to the lab with each sample. In addition, the sample cannot be tested unless the Sample Identification Number matches the number on the sample container label.

☒ Check this box to confirm that **water had not been used at this tap or other taps in the area for 6 hours** and **no** flushing was done prior to sampling

| | |
|---|-------------------------------|
| Name of School District | Amphitheater Unified District |
| School Name | Canyon Del Oro High School |
| Building (name/number) | Ed Center T 2ND FLOOR |
| Type of Fixture (tap, drinking fountain etc.) | DRINKING |
| Location of Fixture (example, room number) | South - outside |
| Sample Identification Number (Write this number on the sample container and on this sheet) | 1038 |
| Date of Collection | 5-17-17 |
| Time of Collection | 6:33 A.M. |
| Printed Name of Sample Collector | Ken Ramirez |
| Signature Sample Collector | Ken Ramirez |

Notes Sample collector:

| | |
|---|-------------------------|
| For Lab use only | |
| Analyze this drinking water sample for lead | |
| Date and Time Lab received | 5/22/17 0930 |
| Signature | _____ |
| Notes: | presented @ lab 5/22/17 |

For relinquishing samples upon delivery to labs only

Relinquished date and signature _____

These samples were collected for lead screening purposes only and cannot be used for compliance.

7052089-29

ADEQ Public School Drinking Water Lead Screening Program
Sampling Plan & Collection Log

Collection Log

for experienced sample collectors

Complete copy of this form for each sample collected. Your drinking water sample cannot be tested unless a copy of this form is shipped to the lab with each sample. In addition, the sample cannot be tested unless the Sample Identification Number matches the number on the sample container label.

☒ Check this box to confirm that **water had not been used at this tap or other taps in the area for 6 hours** and **no** flushing was done prior to sampling

| | |
|---|---------------------------------|
| Name of School District | Amphitheater Unified District |
| School Name | Canyon Del Oro High School |
| Building (name/number) | SCIENCE M 1 st FLOOR |
| Type of Fixture (tap, drinking fountain etc.) | DRINKING |
| Location of Fixture (example, room number) | NORTH - OUTSIDE |
| Sample Identification Number (Write this number on the sample container and on this sheet) | 1039 |
| Date of Collection | 5-17-17 |
| Time of Collection | 6:25 A.M. |
| Printed Name of Sample Collector | KEN RAMIREZ |
| Signature Sample Collector | Ken Ramirez |

Notes Sample collector:

| | |
|---|-------------------------|
| For Lab use only | |
| Analyze this drinking water sample for lead | |
| Date and Time Lab received | 5/22/17 0920 |
| Signature | R |
| Notes: | preserved @ lab 5/22/17 |

For relinquishing samples upon delivery to labs only

Relinquished date and signature _____

These samples were collected for lead screening purposes only and cannot be used for compliance.

705 2089-30
ADEQ Public School Drinking Water Lead Screening Program
Sampling Plan & Collection Log

Collection Log
for experienced sample collectors

Complete copy of this form for each sample collected. Your drinking water sample cannot be tested unless a copy of this form is shipped to the lab with each sample. In addition, the sample cannot be tested unless the Sample Identification Number matches the number on the sample container label.

☒ Check this box to confirm that **water had not been used at this tap or other taps in the area for 6 hours** and **no** flushing was done prior to sampling

| | |
|---|----------------------------------|
| Name of School District | Amphitheater Unified District |
| School Name | Canyon Del Oro High School |
| Building (name/number) | 700 Wing G 2 nd Floor |
| Type of Fixture (tap, drinking fountain etc.) | DRINKING |
| Location of Fixture (example, room number) | W. END OF Hallway outside |
| Sample Identification Number (Write this number on the sample container and on this sheet) | 1042 |
| Date of Collection | 5-11-17 |
| Time of Collection | 6:30 A.M. |
| Printed Name of Sample Collector | KEN RAMIREZ |
| Signature Sample Collector | <i>Ken Ramirez</i> |

Notes Sample collector:

| For Lab use only | |
|---|--------------|
| Analyze this drinking water sample for lead | |
| Date and Time Lab received | 5/22/17 0920 |
| Signature | <i>R-2</i> |
| Notes: PRESERVED @ LWB 5/22/17 | |

For relinquishing samples upon delivery to labs only

Relinquished date and signature _____

These samples were collected for lead screening purposes only and cannot be used for compliance.

7052089-31
ADEQ Public School Drinking Water Lead Screening Program
Sampling Plan & Collection Log

Collection Log
for experienced sample collectors

Complete copy of this form for each sample collected. Your drinking water sample cannot be tested unless a copy of this form is shipped to the lab with each sample. In addition, the sample cannot be tested unless the Sample Identification Number matches the number on the sample container label.

☒ Check this box to confirm that **water had not been used at this tap or other taps in the area for 6 hours** and **no** flushing was done prior to sampling

| | |
|---|-------------------------------|
| Name of School District | Amphitheater Unified District |
| School Name | Canyon Del Oro High School |
| Building (name/number) | 1049 |
| Type of Fixture (tap, drinking fountain etc.) | SINK |
| Location of Fixture (example, room number) | C |
| Sample Identification Number (Write this number on the sample container and on this sheet) | 1049 |
| Date of Collection | 5-11-17 |
| Time of Collection | 6:26 A.M. |
| Printed Name of Sample Collector | KEN RAMIREZ |
| Signature Sample Collector | Ken Ramirez |

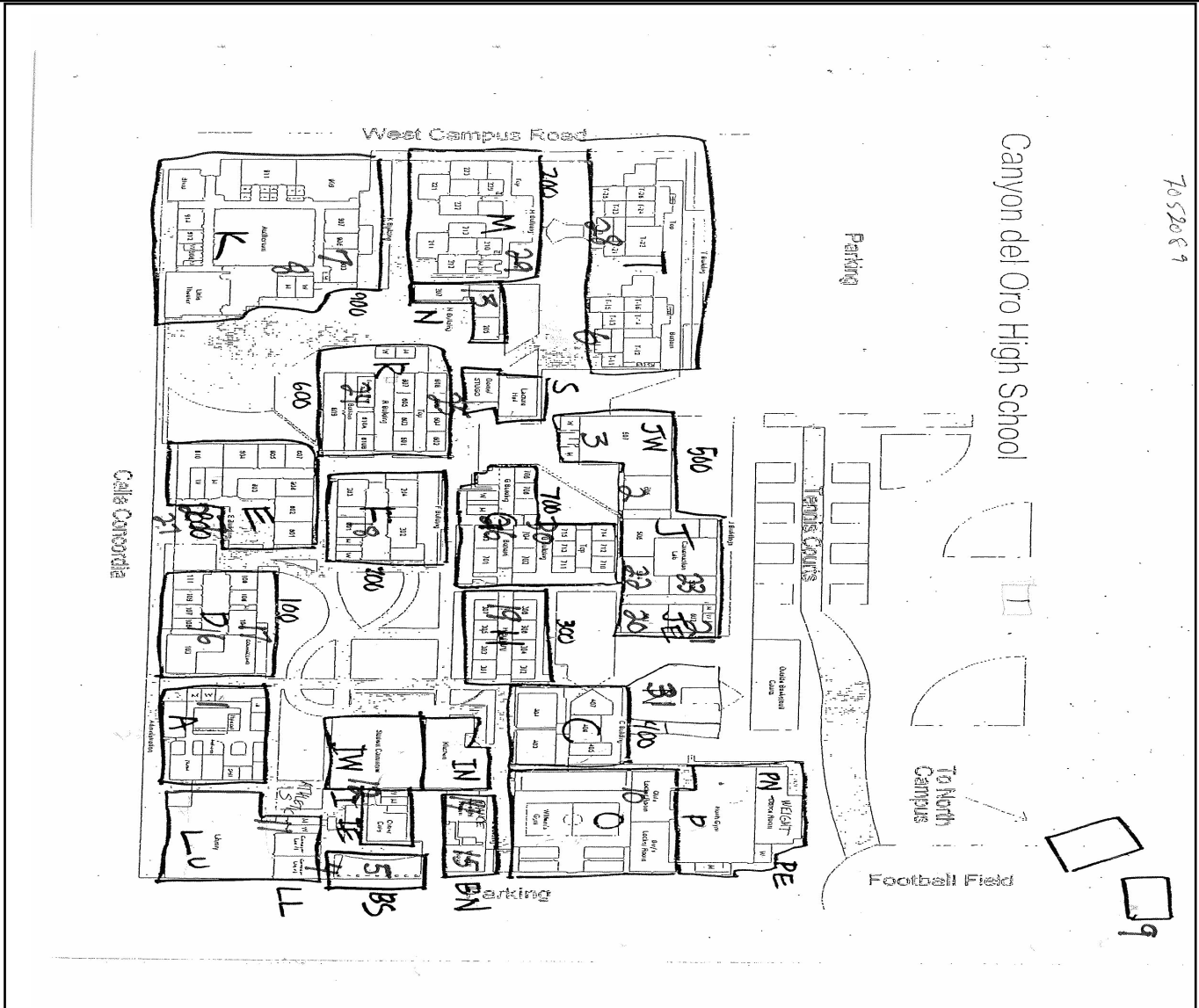
Notes Sample collector:

| For Lab use only | |
|---|------------------------|
| Analyze this drinking water sample for lead | |
| Date and Time Lab received | 5/22/17 0920 |
| Signature | RJ |
| Notes: | presented @ WS 5/22/17 |

For relinquishing samples upon delivery to labs only

Relinquished date and signature _____

These samples were collected for lead screening purposes only and cannot be used for compliance.



7052089

| | District | School | Building No | Building Desc | Building Use | Year Built | Number of Bottles Per Building |
|----|-------------------------------|----------------------------|-------------|------------------------------|----------------------|------------|--------------------------------|
| 1 | Amphitheater Unified District | Canyon Del Oro High School | 1001 | Administration | Administration | 1972 | 2 |
| 2 | Amphitheater Unified District | Canyon Del Oro High School | 1004 | Auto Shop (J) | Vocational | 1978 | 2 |
| 3 | Amphitheater Unified District | Canyon Del Oro High School | 1005 | Bookstore | Bookstore | 1982 | 2 |
| 4 | Amphitheater Unified District | Canyon Del Oro High School | 1006 | Ed Center (T) - First Floor | Classrooms/Labs | 1984 | 2 |
| 5 | Amphitheater Unified District | Canyon Del Oro High School | 1007 | Fine Arts (K) | Auditorium | 1982 | 2 |
| 6 | Amphitheater Unified District | Canyon Del Oro High School | 1008 | Snack Bar, Football Restroom | Snack Bar, Restrooms | 1989 | 1 |
| 7 | Amphitheater Unified District | Canyon Del Oro High School | 1009 | Gyms - Original | Gymnasium | 1967 | 2 |
| 8 | Amphitheater Unified District | Canyon Del Oro High School | 1010 | Gyms - Addition #1 | Snack Bar | 1977 | 2 |
| 9 | Amphitheater Unified District | Canyon Del Oro High School | 1011 | Home Economics (C) | Vocational | 1963 | 2 |
| 10 | Amphitheater Unified District | Canyon Del Oro High School | 1012 | Lecture Hall & Dome (S) | Classrooms/Labs | 1965 | 2 |
| 11 | Amphitheater Unified District | Canyon Del Oro High School | 1013 | Library - Original | Library | 1979 | 2 |
| 12 | Amphitheater Unified District | Canyon Del Oro High School | 1014 | MPR | Cafeteria | 1963 | 2 |
| 13 | Amphitheater Unified District | Canyon Del Oro High School | 1015 | Science (N) | Classrooms/Labs | 1988 | 1 |
| 14 | Amphitheater Unified District | Canyon Del Oro High School | 1016 | Weight Room (B) | Weight Room | 1963 | 2 |
| 15 | Amphitheater Unified District | Canyon Del Oro High School | 1017 | 100 Wing (D) | Classrooms/Labs | 1963 | 2 |
| 16 | Amphitheater Unified District | Canyon Del Oro High School | 1018 | 200 Wing (F) | Classrooms/Labs | 1963 | 2 |

7052089

| | | | |
|----------|--|----------------------------------|----------|
| Address: | | Number of Bottles Per Kit: | 31 19 |
|----------|--|----------------------------------|----------|