



Solid Waste Transfer Facilities Design & Operation Standards Public Hearing

May 28, 2026

Agenda

- Introductions
- Rulemaking timeline
- Overview of the proposed rule
- Questions regarding the proposed rule
- Opportunity to comment on the record



ADEQ Panel

John MacBain, Hearing Officer/Rule Writer

Robin Thomas, P.E., Senior Engineer

Will Puntenney, Principal Engineer

Samantha Roberts, R.G., Section Manager Solid & Hazardous Waste



Rulemaking Timeline

Today's Public Hearing - May 28, 2026

Public Comment Closes - May 29, 2026

Governor's Regulatory Review Council (GRRC) Study Session - July 28, 2026

GRRC Council Meeting - August 4, 2026

Rule becomes effective - October 2026

Proposed Rule

Solid Waste Transfer Facilities
Design & Operation Standards

NPRM available in handouts



Facility Classification

- 180 cubic yard (cy)/day throughput:
 - New rules clarify that any single day's throughput over 180 cy is an exceedance and the facility should be classified as a self-certification facility.
- Transfer facility rule exclusions:
 - Language added to clarify that biohazardous medical waste and special waste receiving facilities are not transfer facilities, and are subject to their own rules.

Facility Classification

- Transfer facility rule exemptions:
 - Temporary drop-site locations: seasonal sites receiving solid waste from vehicles other than those designed to compact waste operating 30 days or less.
 - Small municipal containers: bins, drop boxes, roll off containers, or vehicles with a cumulative capacity of 20 cubic yards or less.

Registration Requirements

- New rules establish separate initial and annual registration requirements for BMP & self-certification facilities.
- Initial registration requirements include facility information, legal description of the property, and operational descriptions and diagrams; with additional requirements for self-certification facilities.
- Annual registration requirements require providing any changes that have occurred to information provided during the initial registration or subsequent registrations.

Design & Operation Requirements

- Facility requirements:
 - Rules establish design & operation requirements including restricting unauthorized access, preventing wind dispersal, preventing vector breeding, and keeping solid waste areas free of standing water.
 - Rules ensure adequate aisle space for emergency vehicles, that containers are maintained in good condition, and that all waste is handled on an impervious surface or in containers.
- Rule language modification after the January stakeholder meeting:
 - Language regarding the management of storm water run on and run off removed.

Design & Operation Requirements

- Waste Screening:
 - Facilities must train personnel to identify unauthorized waste, segregate it, and notify ADEQ.

- Language added to clarify that unauthorized waste means:
 - *nonresidential biohazardous medical wastes*
 - *nonresidential hazardous wastes*
 - *special wastes*

Design & Operation Requirements

- Liquid Waste:
 - The rules establish specific requirements for facilities handling liquid waste, including container requirements and prohibiting mixing or diluting of dissimilar substances.

- Language has been added to the definition of liquid waste to clarify the rules apply to bulk liquids.

Closure Requirements

- Prior to facility closure, a notice of intent to close must be submitted to ADEQ at least 30 days prior to beginning final closure activities.
- Facilities must take necessary steps to minimize or eliminate the release of waste, waste constituents, or leachate.
- Any ongoing or required release investigations or required corrective actions must be completed before final closure can occur.
- Upon final closure, written notice must be submitted to ADEQ certifying compliance with closure requirements.

Financial Assurance

- Owners or operators of solid waste transfer facilities must submit a financial demonstration of capability to meet closure, post-closure care, and corrective action requirements resulting from known releases.
 - Existing facilities: must submit within 180 days of rule effective date.
 - New facilities: must submit prior to beginning operation.
- The cost estimate for financial assurance requirements shall be updated every three years to adjust for inflation and reflect any increased costs from facility conditions, and be resubmitted to ADEQ.

Questions



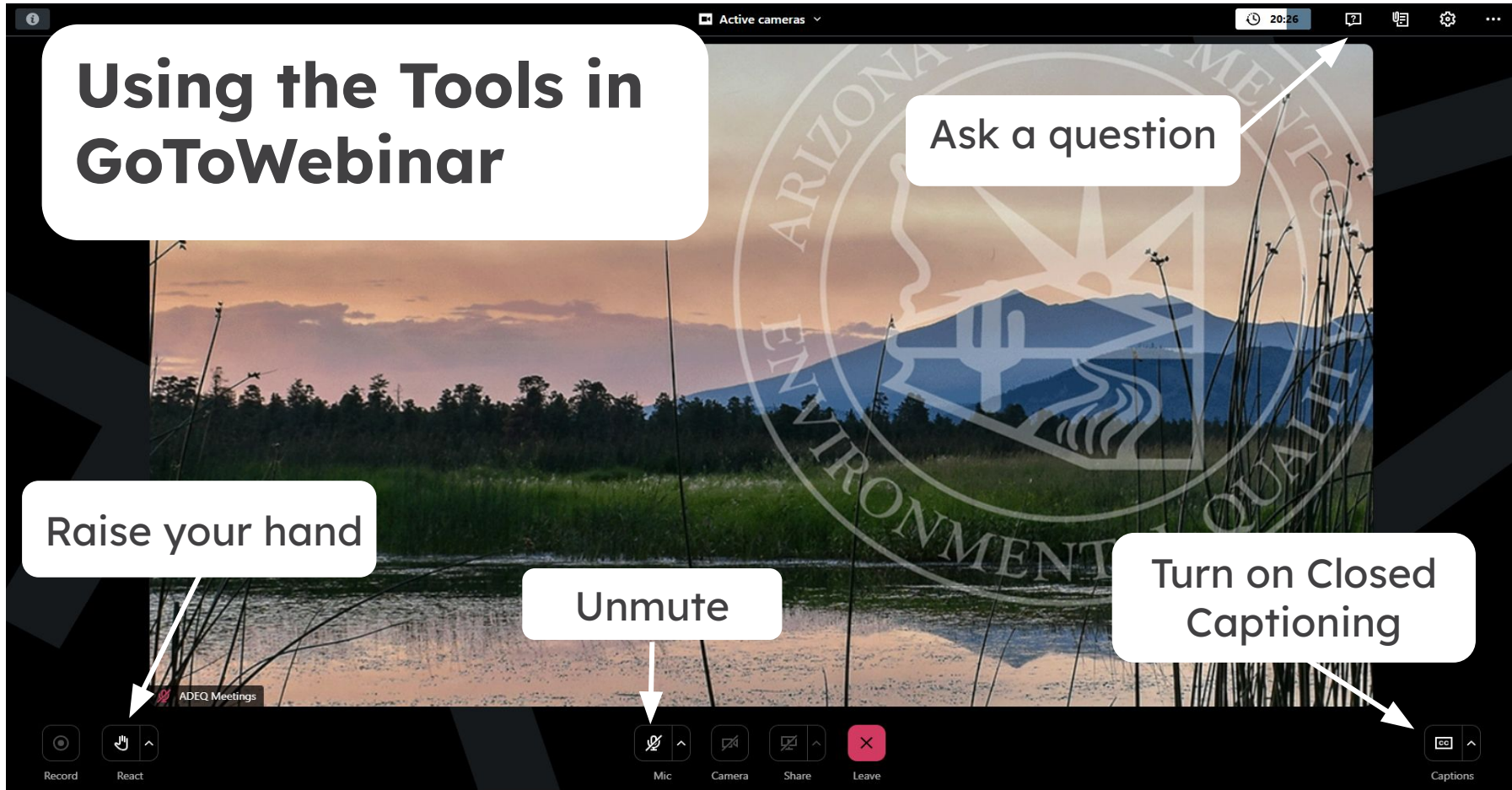
Using the Tools in GoToWebinar

Ask a question

Raise your hand

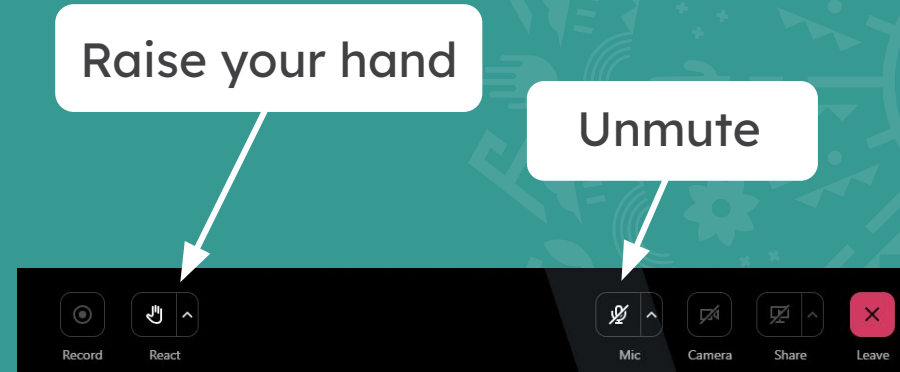
Unmute

Turn on Closed Captioning



Opportunity to Comment on the Record

- ONLINE: Submit request to speak using the “raise hand” feature.
- Please state name and organization to begin your comment.



Close of Comment Period: May 29, 2026, end of day.

John MacBain
1110 West Washington Street
Phoenix, Arizona 85007

macbain.john@azdeq.gov

wasterulemaking@azdeq.gov