

Observed Air Quality Report



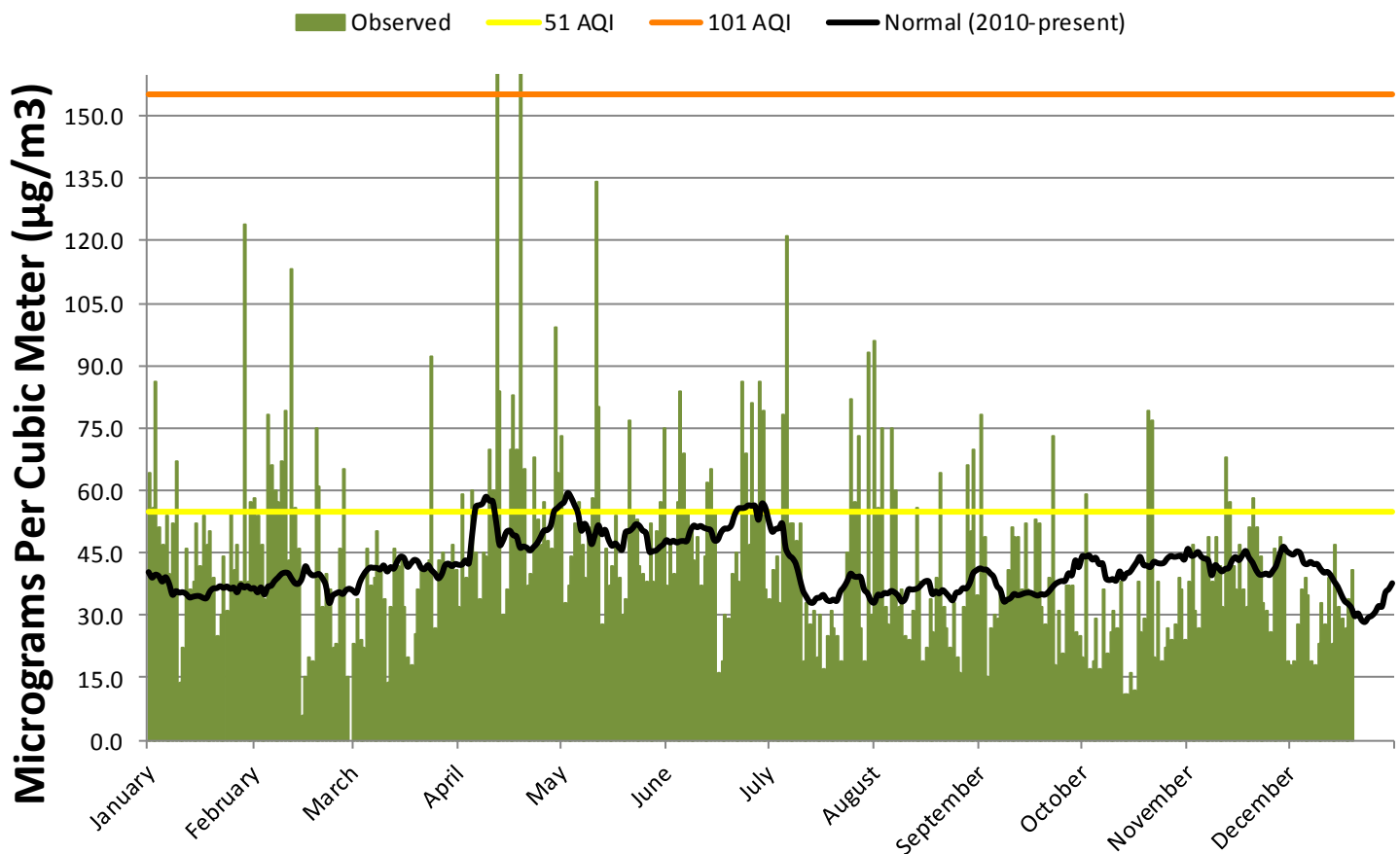
2018 Tucson PM₁₀

Disclaimer: The data provided in this document are preliminary and have not yet been quality assured and certified in the Environmental Protection Agency's (EPA) Air Quality System database. The data are for the purpose of providing general information to the public. This product is updated weekly.

Year to Date (Jan 1 - Dec 19)

	Good days	Moderate days	Exceedance days
Number of days	274	77	2

2018 Tucson PM₁₀



Daily maximum PM₁₀ concentration (green) for the Tucson area measured in micrograms per cubic meter ($\mu\text{g}/\text{m}^3$). The normal line (black) is a rolling weekly average of historical PM₁₀ data. The yellow and orange lines are Air Quality Index (AQI) category breakpoints.

*Scroll to bottom for list of exceedance days.

Daily Maximum PM10 Air Quality Index (AQI)

Date	Jan	Feb	Mar	Apr	May	Jun	Jul	Aug	Sep	Oct	Nov	Dec
1	55	52	21	30	60	34	31	71	62	19	35	17
2	51	50	31	53	31	44	38	51	45	53	44	18
3	66	44	22	36	34	37	41	61	14	16	29	26
4	47	31	20	43	41	52	31	30	25	18	25	33
5	44	62	43	53	48	65	62	26	28	27	40	36
6	50	56	34	42	52	58	84	61	27	16	41	32
7	37	53	36	31	44	51	48	53	33	33	45	18
8	48	52	46	42	36	46	48	30	31	19	35	17
9	57	57	39	41	47	40	44	33	38	24	45	21
10	13	63	31	58	52	45	48	23	47	29	39	31
11	20	40	13	53	90	34	18	22	45	25	30	26
12	43	80	30	131	63	41	31	29	45	35	57	36
13	33	51	43	65	26	54	26	51	33	10	52	21
14	35	43	39	28	43	56	29	35	48	10	39	44
15	48	6	41	33	34	51	19	18	33	15	33	30
16	39	14	30	58	39	15	28	20	32	11	44	27
17	50	19	19	65	50	18	16	31	49	35	33	25
18	44	18	17	58	36	28	23	24	48	24	30	31
19	46	61	24	126	28	27	29	36	30	27	47	38
20	36	54	33	56	31	37	25	55	26	63	52	
21	23	30	38	34	62	42	23	30	36	62	47	
22	28	37	39	37	51	35	18	25	60	19	41	
23	41	33	40	57	49	66	34	20	17	35	31	
24	29	20	69	49	39	58	42	31	29	18	29	
25	51	21	25	44	37	44	64	19	19	20	24	
26	38	43	40	52	35	64	52	15	34	25	43	
27	44	56	42	44	48	50	60	30	34	22	41	
28	35	14	39	43	35	66	25	56	34	26	45	
29	85	NA	39	73	46	63	18	46	24	36	42	
30	35		44	55	52	33	70	58	23	33	18	
31	52		38		61		28	32		22		

Daily Maximum PM10 Concentration (µg/m3)

Date	Jan	Feb	Mar	Apr	May	Jun	Jul	Aug	Sep	Oct	Nov	Dec
1	64	58	23	32	73	37	34	96	78	20	38	18
2	56	54	34	59	33	47	41	56	49	59	47	19
3	86	47	24	39	37	40	44	75	15	17	31	28
4	51	34	22	46	44	57	33	32	27	19	27	36
5	47	78	46	60	52	84	78	28	30	29	43	39
6	54	66	37	45	57	69	121	75	29	17	44	35
7	40	60	39	34	47	55	52	60	36	36	49	19
8	52	57	50	45	39	50	52	32	34	21	38	18
9	67	67	42	44	51	43	48	36	41	26	49	23
10	14	79	34	70	58	49	52	25	51	31	42	33
11	22	43	14	60	134	37	19	24	49	27	32	28
12	46	113	32	216	80	44	33	31	49	38	68	39
13	36	56	46	84	28	62	28	56	36	11	57	23
14	38	46	42	30	46	65	31	38	52	11	42	47
15	52	6	44	36	37	55	20	19	36	16	36	32
16	42	15	32	70	42	16	30	22	35	12	47	29
17	54	20	20	83	54	19	17	34	53	38	36	27
18	47	19	18	70	39	30	25	26	52	26	32	34
19	50	75	26	206	30	29	31	39	32	29	51	41
20	39	61	36	65	34	40	27	64	28	79	58	
21	25	32	41	37	77	45	25	32	39	77	51	
22	30	40	42	40	55	38	19	27	73	20	44	
23	44	36	43	68	53	86	37	22	18	38	33	
24	31	22	92	53	42	69	45	33	31	19	31	
25	55	23	27	47	40	47	82	20	21	22	26	
26	41	46	43	57	38	81	57	16	37	27	46	
27	47	65	45	48	52	54	73	32	37	24	44	
28	38	15	42	46	38	86	27	66	37	28	49	
29	124	NA	42	99	50	79	19	50	26	39	45	
30	38		47	64	57	36	93	70	25	36	19	
31	57		41		75		30	35		24		

2018 PM10 Exceedance Day List

Date	$\mu\text{g}/\text{m}^3$	AQI
4/12/2018	216	131
4/19/2018	206	126