

Observed Air Quality Report



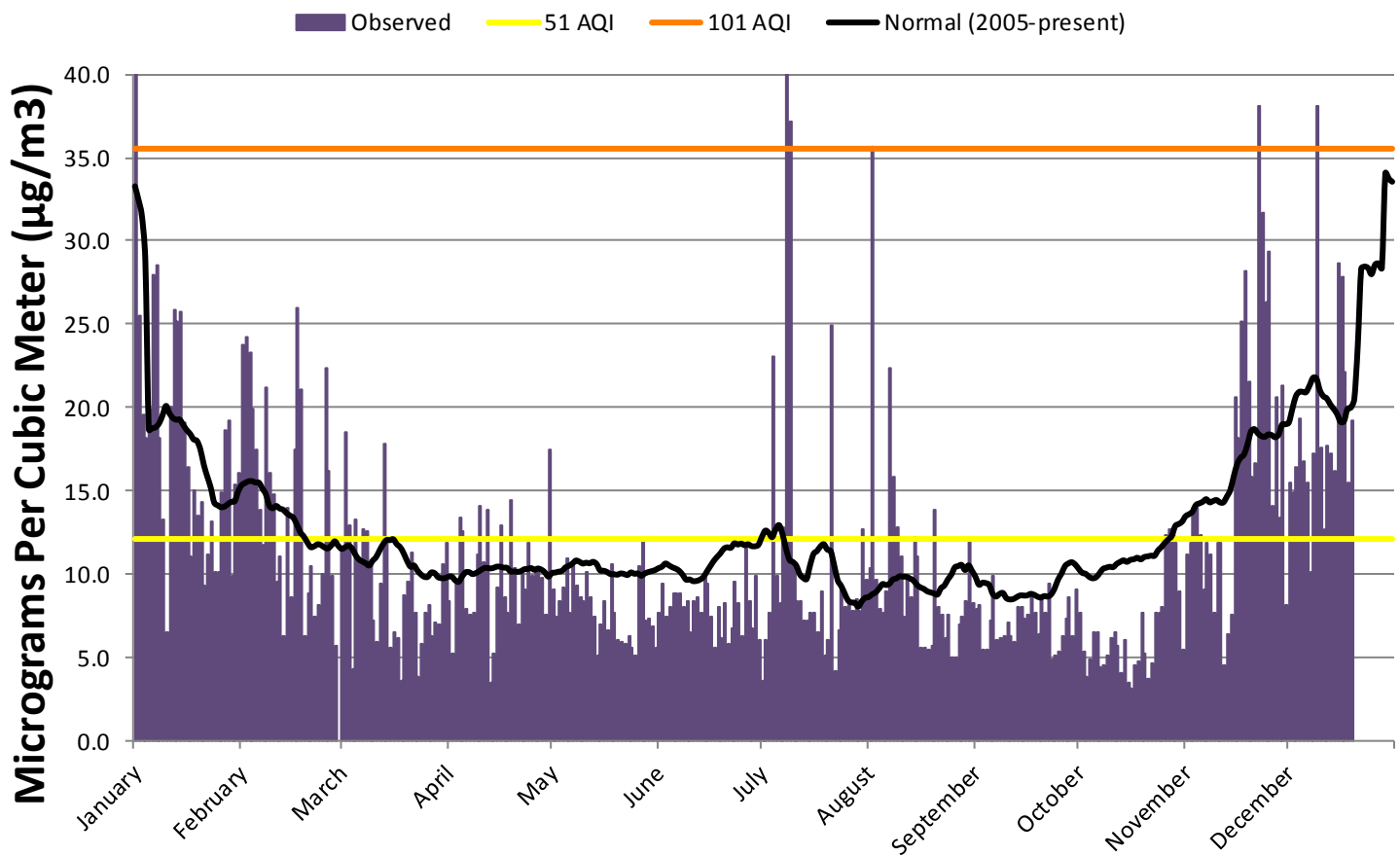
2018 Phoenix PM_{2.5}

Disclaimer: The data provided in this document are preliminary and have not yet been quality assured and certified in the Environmental Protection Agency's (EPA) Air Quality System database. The data are for the purpose of providing general information to the public. This product is updated weekly.

Year to Date (Jan 1 - Dec 19)

	Good days	Moderate days	Exceedance days
Number of days	250	97	6

2018 Phoenix PM_{2.5}



Daily maximum PM_{2.5} concentration (purple) for the Phoenix area measured in micrograms per cubic meter (µg/m³). The normal line (black) is a rolling weekly average of historical PM_{2.5} data. The yellow and orange lines are Air Quality Index (AQI) category breakpoints.

*Scroll to bottom for list of exceedance days.

Daily Maximum PM2.5 Air Quality Index (AQI)

Date	Jan	Feb	Mar	Apr	May	Jun	Jul	Aug	Sep	Oct	Nov	Dec
1	249	75	48	35	38	32	15	43	33	32	47	58
2	79	76	64	22	31	39	25	101	34	22	50	57
3	67	75	53	40	35	31	32	40	23	16	55	60
4	64	67	18	54	38	33	74	33	23	20	55	66
5	67	62	54	52	45	37	41	32	30	27	51	61
6	84	55	45	33	32	37	34	37	41	27	38	58
7	85	49	52	31	43	37	52	73	25	18	50	42
8	64	70	52	32	39	33	127	59	25	19	46	62
9	53	59	45	47	36	35	105	52	26	21	32	107
10	27	57	30	55	35	27	43	46	30	25	49	63
11	68	40	25	45	42	35	35	31	26	27	49	52
12	80	46	39	55	36	36	35	40	25	24	19	63
13	78	26	63	15	31	32	30	36	33	17	27	62
14	80	55	50	22	21	40	30	51	33	25	31	60
15	66	36	23	38	29	39	32	46	30	15	69	86
16	60	62	27	53	35	31	32	23	31	13	64	84
17	46	80	25	36	28	23	27	23	37	19	79	72
18	57	70	15	32	44	33	37	23	32	20	85	58
19	54	26	36	56	32	25	21	24	27	32	71	66
20	56	37	40	43	25	34	25	55	36	22	59	
21	39	44	47	29	25	24	78	33	32	15	60	
22	47	31	32	42	24	28	17	31	39	19	107	
23	53	34	16	38	26	40	28	25	20	32	92	
24	42	42	24	49	23	34	38	31	21	32	81	
25	42	73	32	41	21	26	33	21	22	33	87	
26	57	60	34	43	43	49	34	21	26	51	55	
27	65	41	26	43	50	35	33	29	30	52	69	
28	66	24	30	40	30	28	35	31	36	51	54	
29	41	NA	29	31	30	41	33	35	26	50	70	
30	58		44	62	28	25	52	50	38	37	34	
31	59		50		23		40	34		23		

Daily Maximum PM2.5 Concentration (µg/m3)

Date	Jan	Feb	Mar	Apr	May	Jun	Jul	Aug	Sep	Oct	Nov	Dec
1	199.3	23.7	11.6	8.4	9	7.7	3.6	10.3	7.9	7.6	11.2	15.5
2	25.5	24.2	18.5	5.2	7.4	9.4	6	35.6	8.1	5.3	11.9	14.9
3	NA	23.3	12.9	9.5	8.4	7.4	7.6	9.6	5.4	3.8	14	16.4
4	18.1	19.9	4.3	13.4	9.2	8	23.1	7.9	5.4	4.8	14	19.3
5	19.9	17.5	13.3	12.6	10.9	8.8	9.9	7.6	7.2	6.5	12.3	16.8
6	28	13.8	10.8	7.9	7.7	8.8	8.2	8.9	9.9	6.5	9.1	15.5
7	28.5	11.7	12.7	7.5	10.4	8.8	12.8	22.4	6	4.4	11.9	10.1
8	18.1	21.2	12.6	7.7	9.3	8	46	15.8	6.1	4.5	11.1	17.2
9	13.2	16	10.7	11.2	8.6	8.4	37.2	12.8	6.2	5.1	7.7	38.1
10	6.5	14.8	7.2	14.1	8.3	6.5	10.4	11	7.1	6.1	11.8	17.6
11	20	9.5	5.9	10.7	10.1	8.3	8.4	7.4	6.3	6.5	11.8	12.7
12	25.8	11	9.4	13.8	8.6	8.6	8.4	9.7	5.9	5.7	4.5	17.7
13	25.1	6.3	17.8	3.5	7.4	7.7	7.2	8.6	8	4	6.4	17.2
14	25.7	14	11.9	5.2	5.1	9.7	7.2	12.2	8	6	7.5	16.2
15	19.1	8.6	5.5	9.2	7	9.4	7.6	11	7.3	3.5	20.6	28.6
16	16.4	17.4	6.5	12.9	8.4	7.4	7.6	5.6	7.5	3.1	18.1	27.8
17	11	26	6.1	8.6	6.6	5.5	6.5	5.5	8.8	4.5	25.2	22.1
18	15	21.1	3.6	7.7	10.6	8	8.9	5.4	7.6	4.7	28.2	15.5
19	13.5	6.2	8.7	14.4	7.6	6.1	5.1	5.7	6.4	7.6	21.5	19.2
20	14.3	8.8	9.5	10.3	6	8.2	6	13.8	8.7	5.2	15.8	
21	9.3	10.5	11.3	6.9	5.9	5.8	24.9	8	7.6	3.7	16.6	
22	11.2	7.4	7.6	10	5.8	6.7	4.1	7.5	9.4	4.6	38.1	
23	13.1	8.1	3.8	9	6.3	9.5	6.6	6.1	4.8	7.7	31.7	
24	10.1	10	5.8	11.8	5.6	8.2	9.1	7.5	5.1	7.6	26.3	
25	10.1	22.4	7.6	9.9	5.1	6.2	8	5	5.3	8	29.4	
26	14.9	16.2	8.1	10.2	10.4	11.7	8.1	5	6.3	12.3	14.1	
27	18.6	9.9	6.2	10.2	12	8.3	7.8	6.9	7.3	12.7	20.6	
28	19.2	5.7	7.1	9.7	7.2	6.7	8.5	7.4	8.6	12.3	13.4	
29	9.9	0	6.9	7.5	7.3	9.9	7.8	8.3	6.2	11.9	21.3	
30	15.3		10.6	17.5	6.8	6	12.7	12	9.1	8.9	8.1	
31	16		11.9		5.6		9.6	8.2		5.4		

2018 PM2.5 Exceedance Day List

Date	$\mu\text{g}/\text{m}^3$	AQI
1/1/2018	199.3	249
7/8/2018	46	127
7/9/2018	37.2	105
8/2/2018	35.6	101
11/22/2018	38.1	107
12/9/2018	38.1	107