

Your construction project has been selected for an inspection to determine compliance with the 2013 ADEQ Stormwater Construction General Permit. This **OPTIONAL** checklist is intended to assist facility owners/operators with preparing for an inspection by ADEQ. The items listed below are common permit violations observed by ADEQ and often result in either an informal or formal enforcement action following the inspection. **Use of this checklist is not required and it will not be part of the official inspection.** However, ADEQ encourages you to use this checklist to identify and correct potential deficiencies prior to ADEQ's inspection to reduce potential violations and enforcement actions.

INSTRUCTIONS:

Evaluate your project by answering the following questions. "NO" answers are **POTENTIAL** permit violations and should be corrected immediately. If assistance is needed with how to answer a question or how to correct an issue, contact the Stormwater Inspector who scheduled the inspection or call the ADEQ Stormwater & General Permits unit at (602) 771-4509.

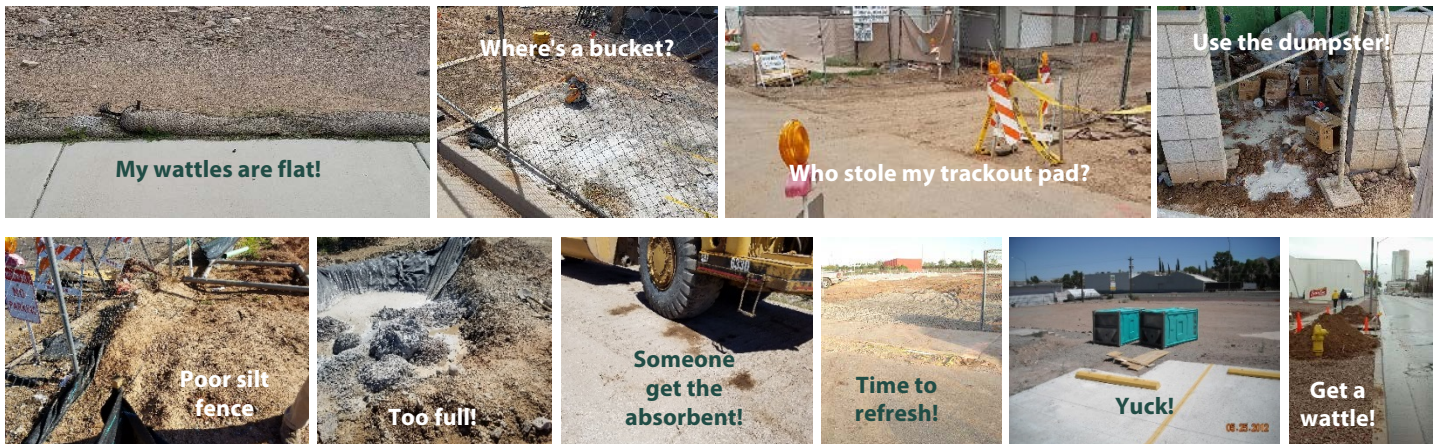
SWPPP and Documentation Review

- YES NO 1. Have Routine Inspections been performed and documented in the SWPPP? (Part 4.0)
- YES NO 2. Is the Corrective Action Log current with all items adequately addressed? (Part 5.0)
- YES NO 3. Is the signature page signed by a Duly-Authorized Representative? (Part 6.1 and Appendix B Subsection 9)
- YES NO 4. Is the Summary of Potential Pollutant Sources present and complete? (Part 6.3)
- YES NO 5. Is the Site Map current with installed Control Measures in their current locations? (Part 6.3)
- YES NO 6. Are all documents/permits available in the SWPPP (e.g. ADEQ NOI, 404, Dust Control)? (Part 6.4)
- YES NO 7. Does the SWPPP meet the requirements of the 2013 ADEQ Construction General Permit? (Part 6.0)

Site Assessment

- YES NO 8. Are trackout prevention controls sized properly and in adequate condition? (Part 3.1.3.2)
- YES NO 9. Have all spills (e.g. engine oil, paint, etc.) been addressed? (Part 3.1.3.4)
- YES NO 10. Is all wastewater from concrete washout being captured in a lined container or basin? (Part 3.1.3.1)
- YES NO 11. Is the AZCON number posted in a location visible to the public (e.g. on the dust permit board)?
- YES NO 12. Is good housekeeping maintained (e.g. street sweeping, proper containers, labeling, drip pans, garbage, etc.)?
- YES NO 13. Are all control measures maintained in good condition (e.g. straw wattles, silt fences, etc.)?
- YES NO 14. Are the current site conditions (locations of control measures, etc.) updated on the Site Map?

Avoid common violations:
Perimeter control • Concrete washout • Trackout pads • Housekeeping • Spills • Documentation



For translations or other communications aids, please email the Title VI Coordinator at idb@azdeq.gov.
Para traducciones u otras ayudas de comunicación, envíe un correo electrónico al Coordinador del Título VI al idb@azdeq.gov.