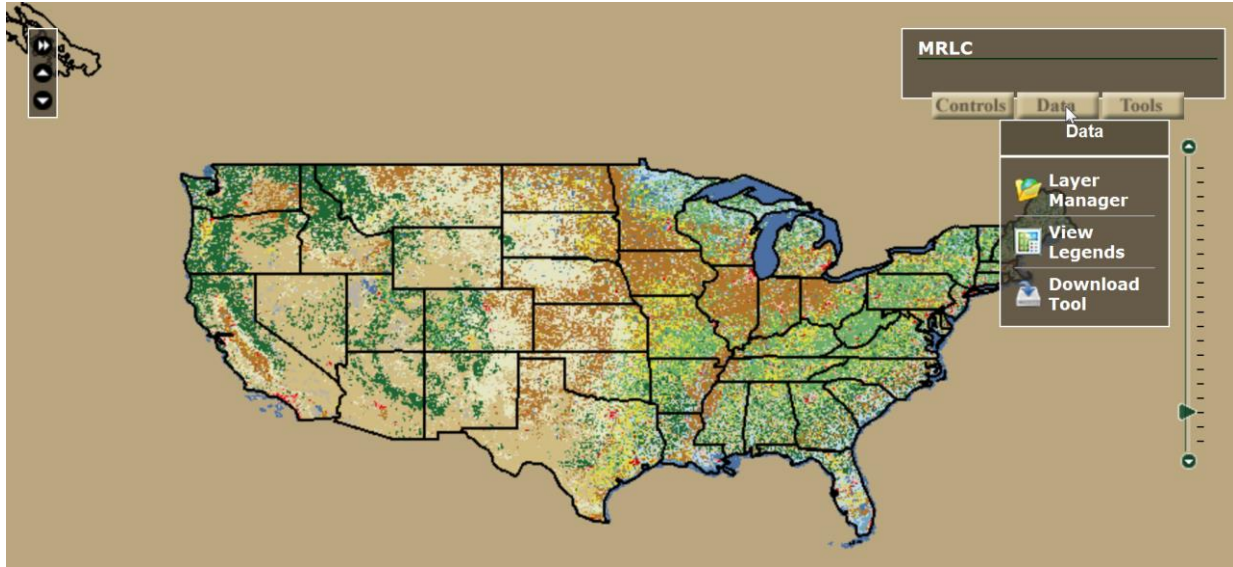
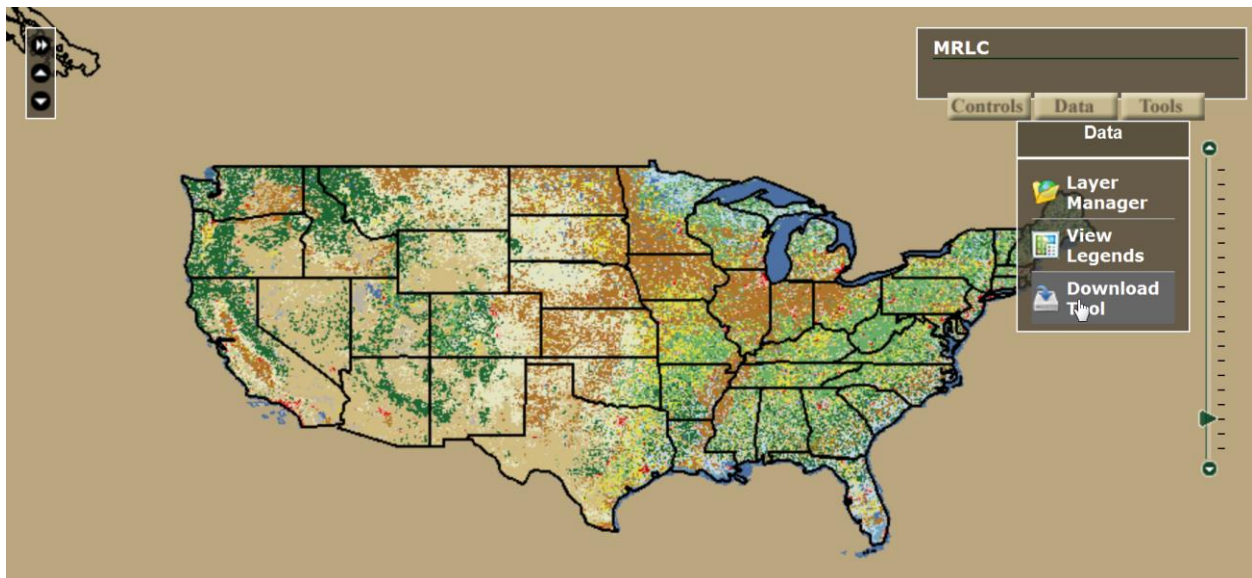


## How to download NED data as a GeoTIFF from the MRLC Consortium Viewer

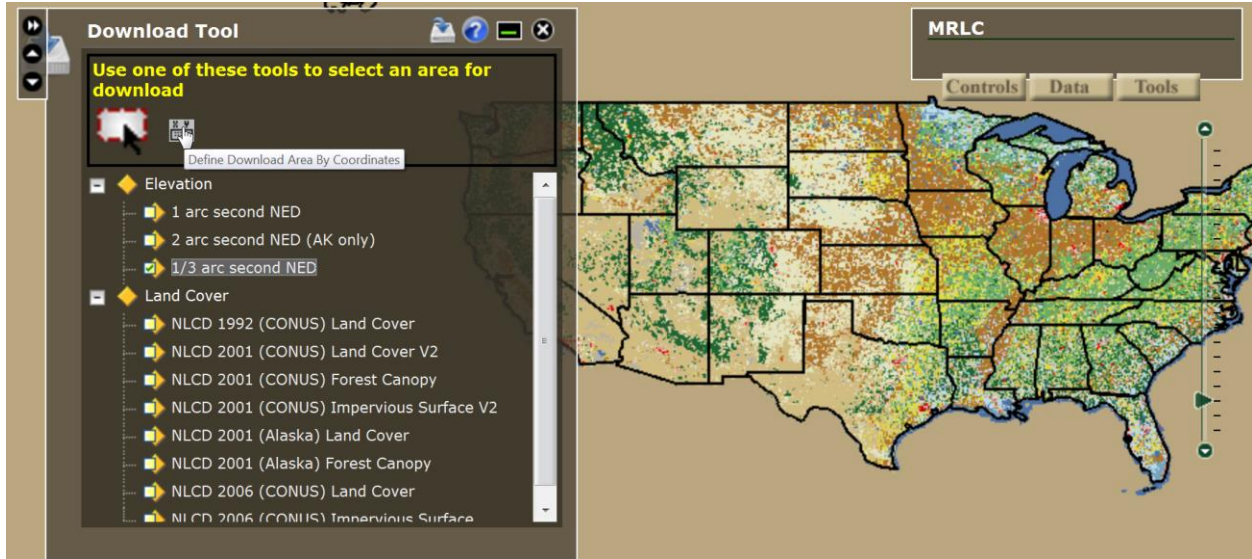
1. Click on the "Data" button (located in the top right corner of your browser)



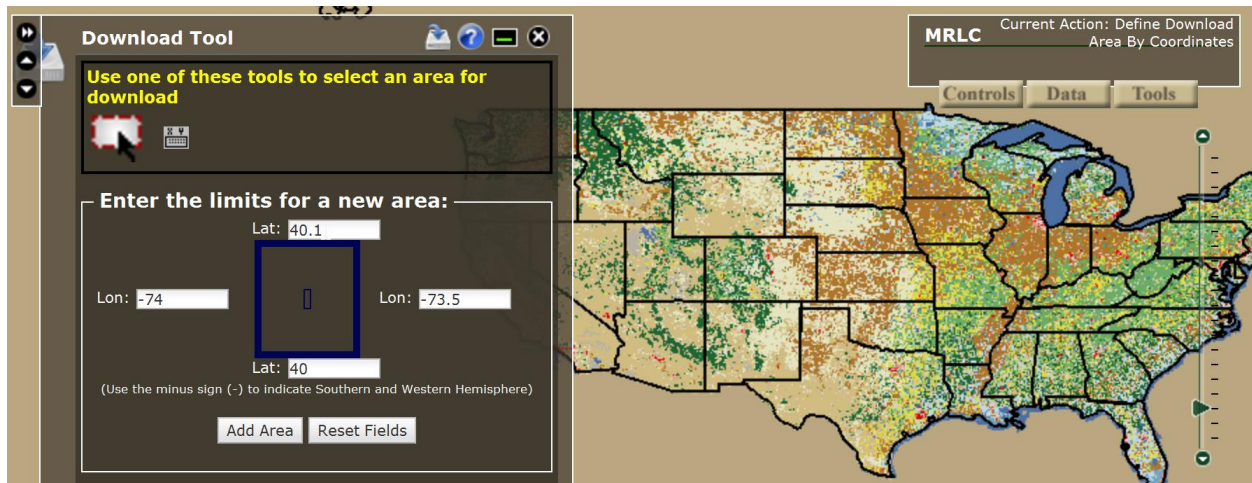
2. Click on the "Download Tool" button



3. Select elevation database and click on the “Define Download Area by Coordinates” button



4. Define the download area by coordinates

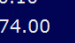



5. After the boundaries are submitted, click on the “Modify Request” button

## The National Map Seamless Server Request Summary Page

You are logged in as Default Seamless User.

[Modify Data Request](#) [Tutorial](#) [HELP!](#)

Data Extraction Request Pieces:			
Area	Output Parameters	Size (MB)	Download Links
National Elevation Dataset (NED) 1/3 Arc Second			
(WGS 84) N: 40.10 W: -74.00  S: 40.00 E: -73.50	Output Format: ArcGRID NAD 83 Geographic X cell Size: 00.00009 Degrees Y cell Size: 00.00009 Degrees	24	 <a href="#">Download</a>

6. Change the NED format from ArcGRID to GeoTIFF and click on the “Save Changes and Return to Summary” button

## The National Map Seamless Server Request Options Page

[Tutorial](#) [HELP!](#)

[Cancel All Changes & Return to Summary](#)

[Save Changes & Return to Summary](#)

Order Options:				
Output Projection and Datum: Native				
Requested Product(s):		Data Format:	Archive Format:	Metadata Format:
<input type="checkbox"/> Afghanistan				
<input type="checkbox"/> Elevation				
<input type="checkbox"/>	National Elevation Dataset (NED) 1 Arc Second	ArcGRID	ZIP	HTML
<input checked="" type="checkbox"/>	National Elevation Dataset (NED) 1/3 Arc Second	ArcGRID	ZIP	HTML
<input type="checkbox"/>	National Elevation Dataset (NED) 1/9 Arc Second	GeoTIFF	ZIP	HTML
<input type="checkbox"/>	Topographic Change: Difference DEM	GridFloat BIL_16INT	ZIP	HTML
<input type="checkbox"/>	Topographic Change: NED 2003 DEM	ArcGRID	ZIP	HTML

7. Now you can download the GeoTIFF NED data.